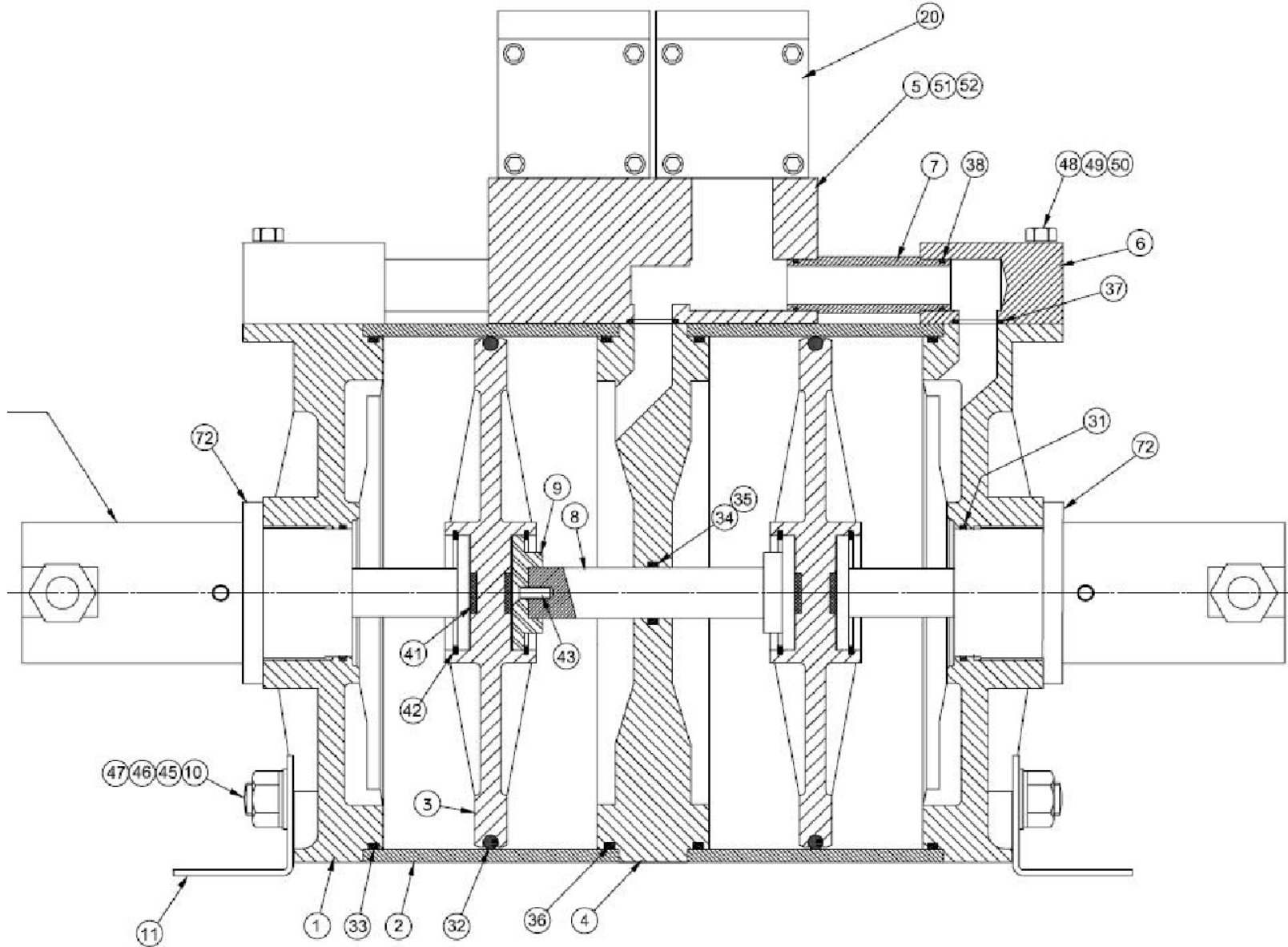


ITEM NO	PART NO	DESCRIPTION	QTY
1	ATDP63-GA-1	FRAME	1
2	ATDP63-GA-2	RELEASE VALVER BRACKET	1
3	ATDP63-GA-3	OUTLET BLOCK	1
4	ATDP63-GA-4	INLET BLOCK	1
5	ATDP63-GA-5	PUMP	1
6	ATDP63-GA-6	SURFACE MID GAUGE 0-10K	1
7	ATDP63-GA-7	1" FRL	1
8	ATDP63-GA-8	FRL T' INTERFACE	1
9	ATDP63-GA-9	FRL S PACER	1
10	ATDP63-GA-10	1" BALL VALVE	1
16	ATDP63-GA-16	Y' TYPE STRAINER	1
18	ATDP63-GA-18	COPPER TUBE	1M
19	ATDP63-GA-19	LEXAN GAUGE GUARD	1
25	ATDP63-GA-25	TUBE ASTM	0.75M
27	ATDP63-GA-27	RELEASE VALVE	1
28	ATDP63-GA-28	GLAND & COLLAR	1
29	ATDP63-GA-29	TUBE	0.25M
30	ATDP63-GA-30	WATER INLET RELIEF VALVE	1

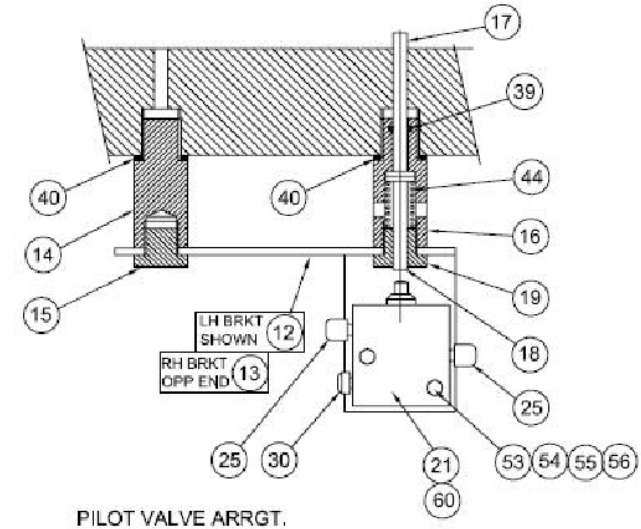
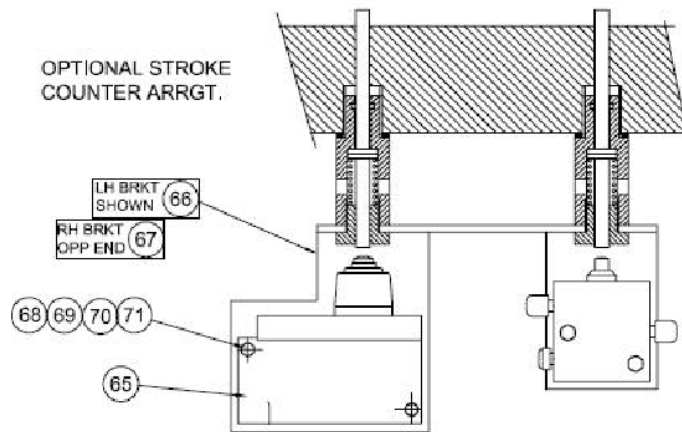
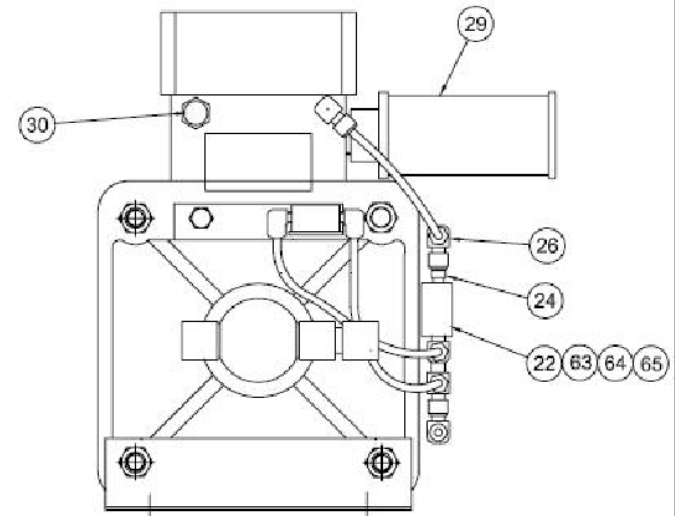
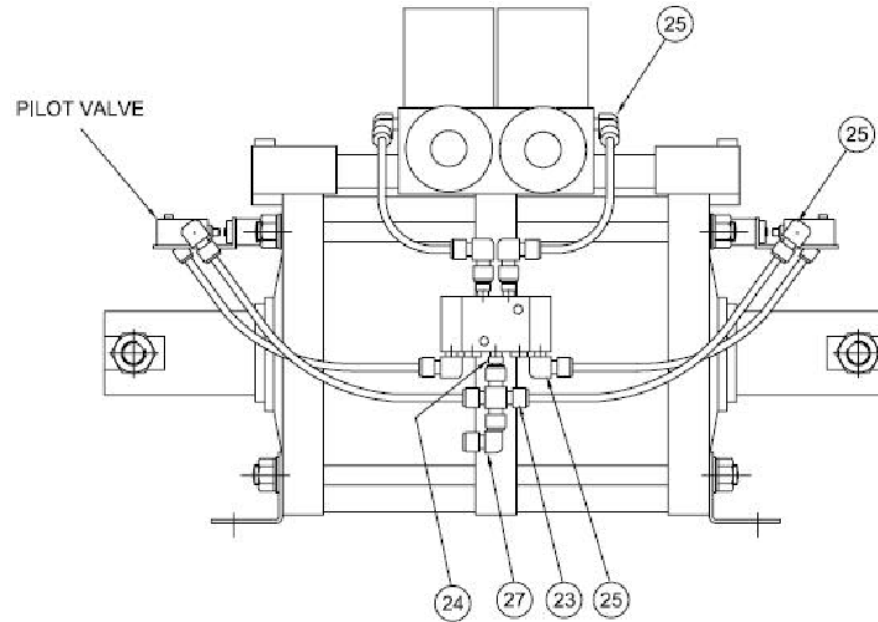
**IMPORTANT**  
WHEN ORDERING SPARES YOU MUST STATE THE FULL PART NUMBER AND THE PRODUCT SERIAL NUMBER - FROM THE LABEL TO PROTECT YOUR WARRANTY ALWAYS USE GENUINE HI-FORCE PARTS.

SEE HYDRAULIC  
ASSY DRAWING



**IMPORTANT**

WHEN ORDERING SPARES YOU MUST STATE THE FULL PART NUMBER AND THE PRODUCT SERIAL NUMBER - FROM THE LABEL TO PROTECT YOUR WARRANTY ALWAYS USE GENUINE HI-FORCE PARTS.



**IMPORTANT**

WHEN ORDERING SPARES YOU MUST STATE THE FULL PART NUMBER AND THE PRODUCT SERIAL NUMBER - FROM THE LABEL TO PROTECT YOUR WARRANTY ALWAYS USE GENUINE HI-FORCE PARTS.

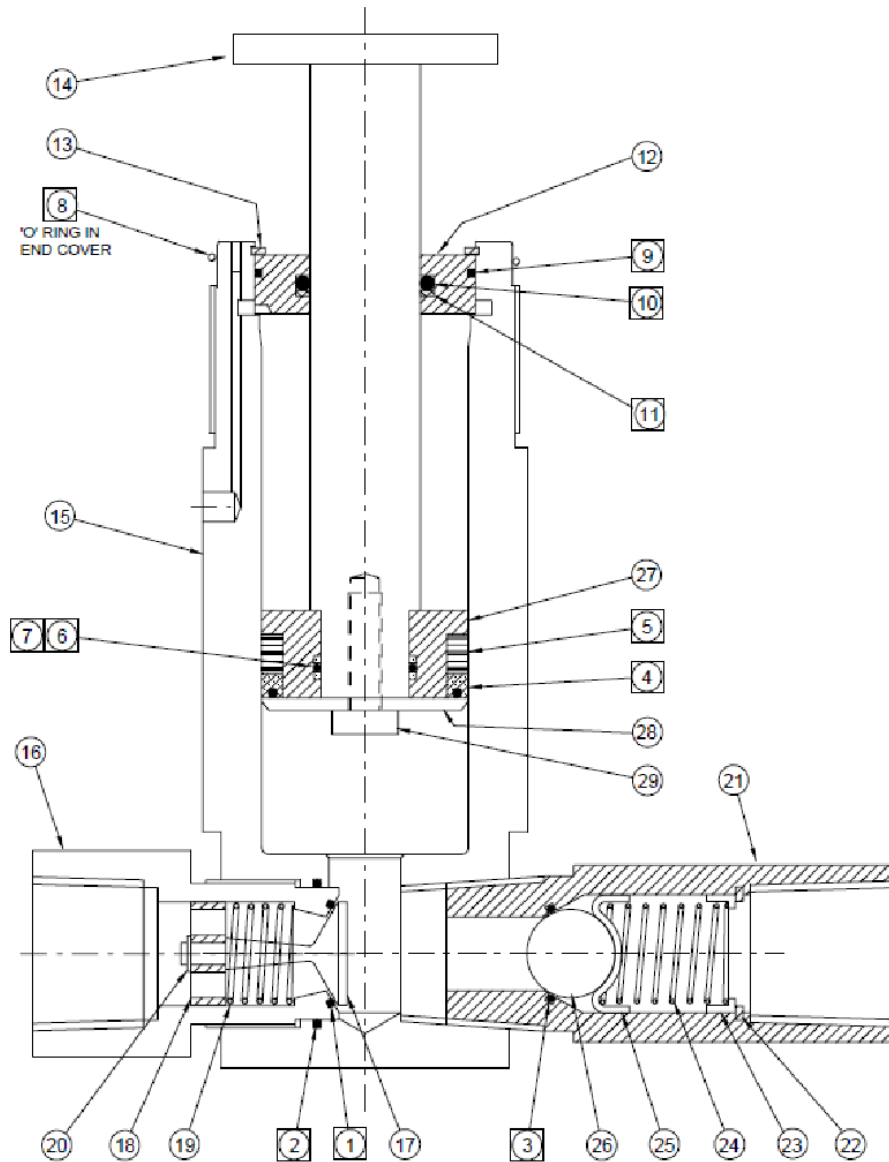
ITEM NO	PART NO	DESCRIPTION	QTY
1	ATDP 63-1	END COVER	2
2	ATDP 63-2	AIR BARREL	2
3	ATDP 63-3	AIR PISTON	2
4	ATDP 63-4	CENTRE PLATE	1
5	ATDP 63-5	VALVER BLOCK	1
6	ATDP 63-6	END BLOCK	2
7	ATDP 63-7	AIR TUBE	2
8	ATDP 63-8	AIR PISTON CONNECTING ROD	1
9	ATDP 63-9	CONNECTING ROD FLANGE	2
10	ATDP 63-10	TIE ROD STAINLESS STEEL	4
11	ATDP 63-11	MOUNTING FOOT	2
12	ATDP 63-12	LH AIR PILOT BRACKET	1
13	ATDP 63-13	RH AIR PILOT BRACKET	1
14	ATDP 63-14	MOUNTING BRACKET PLUG	2
15	ATDP 63-15	MOUNTING BRACKET BOLT	2
16	ATDP 63-16	PLUNGER BODY	2
17	ATDP 63-17	AIR SIDE PLUNGER	2
18	ATDP 63-18	VALVE SIDE PLUNGER	2
19	ATDP 63-19	PLUNGER GUIDE	2
20	ATDP 63-20	PILOT/ SPRTING VALVE	2
21	ATDP 63-21	PLUNGER/ SPRING VALVE	2
22	ATDP 63-22	PILOT/ PILOT VALVE	1
23	ATDP 63-23	CROSS	1
24	ATDP 63-24	NPT STAND PIPE	3
25	ATDP 63-25	MALE ELBOW	8
26	ATDP 63-26	EQUAL ELBOW	2
27	ATDP 63-27	STEM ELBOW	1
28	ATDP 63-28	TUBE	A/R
29	ATDP 63-29	SILENCER	2
30	ATDP 63-30	SILENCER	6
31	ATDP 63-31	O- RING HYD ASSEY END PLATE	2
32	ATDP 63-32	O- RING PISTON	2
33	ATDP 63-33	O-RING END PLATE AIR BARREL	2
34	ATDP 63-34	O-RING CENTRE PLATE CON ROD	1
35	ATDP 63-35	O-RING BACK UP RING	2
36	ATDP 63-36	O-RING CENTRE PLATE-AIR BARREL	2
37	ATDP 63-37	O-RING VALVE BLOCK END PLATE	4
38	ATDP 63-38	O-RING AIR TUBE	4
39	ATDP 63-39	O-RING PLUNGER	2
40	ATDP 63-40	BONDED WASHER	4

41	ATDP 63-41	CUSHON- AIR PISTON	4
42	ATDP 63-42	CIRCLIP- AIR PISTON	4
43	ATDP 63-43	C'SUNK SOCKET SCREW	2
44	ATDP 63-44	SPRING PLUNGER	2
45	ATDP 63-45	STAINLESS NUT	4
46	ATDP 63-46	PLAIN WASHER	4
47	ATDP 63-47	SPRING WASHER	4
48	ATDP 63-48	BOLT - END BLOCKS	4
49	ATDP 63-49	PLAIN WASHER	4
50	ATDP 63-50	SPRING WASHER	4
51	ATDP 63-51	CAP HEAD SCREW	2
52	ATDP 63-52	SPRING WASHER	2
53	ATDP 63-53	BOLT	4
54	ATDP 63-54	PLAIN WASHER	8
55	ATDP 63-55	SPRING WASHER	4
56	ATDP 63-56	NUT	4
57	ATDP 63-57	BSP PLUG	2
58	ATDP 63-58	BOLT	2
59	ATDP 63-59	PLAIN WASHER	2
60	ATDP 63-60	PILOT VALVE SPACER	2
65	ATDP 63-65	MICRO SWITCH	1
66	ATDP 63-66	LH AIR PILOT/ SWITCH BRACKET	1
68	ATDP 63-68	BOLT	2
69	ATDP 63-69	PLAIN WASHER	2
70	ATDP 63-70	SPRING WASHER	2
71	ATDP 63-71	NUT	2

**IMPORTANT**

WHEN ORDERING SPARES YOU MUST STATE THE FULL PART NUMBER AND THE PRODUCT SERIAL NUMBER - FROM THE LABEL TO PROTECT YOUR WARRANTY ALWAYS USE GENUINE HI-FORCE PARTS.

HYDRAULIC ASSY  
DRAWING.



ITEM NO	PART NO.	DESCRIPTION	QTY
1	ATDP 63-72	O-RING (NITRILE)	1
2	ATDP 63-73	O-RING (NITRILE)	1
3	ATDP 63-74	O-RING (NITRILE)	1
4	ATDP 63-75	PISTON SEAL	1
5	ATDP 63-76	BEARING	1
6	ATDP 63-77	O-RING (NITRILE)	1
7	ATDP 63-78	BACK UP RING	2
8	ATDP 63-79	O-RING (NITRILE)	1
9	ATDP 63-80	O-RING (NITRILE)	1
10	ATDP 63-81	O-RING (NITRILE)	1
11	ATDP 63-82	BACK UP RING	1
12	ATDP 63-83	SEAL HOUSING	1
13	ATDP 63-84	RETAINING RING	1
14	ATDP 63-85	HYDRAULIC PISTON	1
15	ATDP 63-86	HYDRAULIC CYLINDER	1
16	ATDP 63-87	INLET CV BODY	1
17	ATDP 63-88	POPPET CHECK	1
18	ATDP 63-89	GUIDE	1
19	ATDP 63-90	SPRING	1
20	ATDP 63-91	RETAINER	1
21	ATDP 63-92	OUTLET CV BODY	1
22	ATDP 63-93	RETAINER	1
23	ATDP 63-94	SPRING SEAT	1
24	ATDP 63-95	SPRING	1
25	ATDP 63-96	CHECK BALL SEAT	1
26	ATDP 63-97	CHECK BALL	1
27	ATDP 63-98	SEAL CARRIER	1
28	ATDP 63-99	RETAINING RING	1
29	ATDP 63-100	BOLT	1

**IMPORTANT**

WHEN ORDERING SPARES YOU MUST STATE THE FULL PART NUMBER AND THE PRODUCT SERIAL NUMBER - FROM THE LABEL TO PROTECT YOUR WARRANTY ALWAYS USE GENUINE HI-FORCE PARTS.