

# Electric Chain Hoists



Ingersoll Rand Quantum QCH Series electric chain hoists bring outstanding control, reliability, long life, and safety to your load handling operations. Available in both single and dual-speed options — as well as lifting capacities ranging from 0.125 to 5 ton — Quantum QCH Series hoists meet or exceed H3 duty-cycle standards for world-class performance. They are also the only hoist family UL and C-UL listed, with third-party evaluation limiting liability.

Quantum QCH Series hoists feature geared limit switches and pendants with e-stops as standard. They offer low-headroom profiles and are easily customized to your application.

# Quantum Series

0.125 to 5 metric ton lifting capacities

## Features

**Smooth, quiet operation** — Helical / spur gear combination provides smooth movement and quiet, reliable operation. A floating chain guide precisely feeds chain onto a machine-matched, five-pocket chain wheel. This system ensures smooth, jam-resistant operation.

**Durability** — Quantum load chains are precision-formed from alloy steel, case hardened and zinc-plated. The plating is an Ingersoll Rand proprietary process that resists corrosion better than any standard plating offered for load chain.

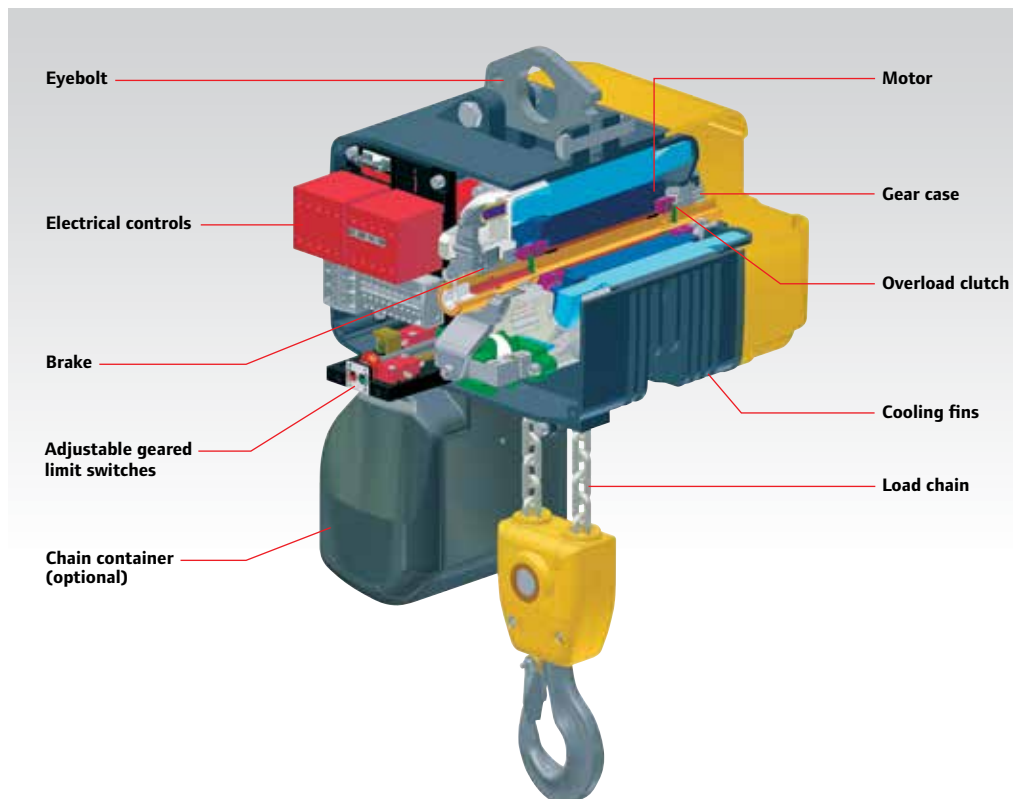
**Reliability** — With high starting torque, Quantum motors use a totally enclosed non-ventilated (TENV) squirrel cage design. Class F insulation provides a total thermal rating of 145°C at a 1.0 service factor, instead of the more common Class B insulation of 120° C.

**Safety** — State-of-the-art AC motor brakes with all-steel discs. Multiple stacking significantly increases braking surface area, reducing wear and extending life. Quantum brake discs are guaranteed for the life of the hoist. The overload clutch is factory-set to limit Quantum from lifting loads in excess of 150% of rated hoisting capacity.

**Ergonomics** — Safety-first pendent control handles are comfortable and fit securely in the operator's hand. Each low-voltage (42-volt) control handle integrates a large, red emergency stop button. Operating buttons are clearly marked with high contrast arrows, feature soft-push action, and are horizontally aligned for easier operation.



Electric Chain Hoists



# Quantum Series

0.125 to 5 metric ton lifting capacities

## Quantum Series Specifications

| Model                             | Capacity |                | # Falls | Motor<br>hp | Hook Mount<br>Headroom |       | Trolley Mount<br>Headroom |       | Lifting Speed<br>Rated Load or No Load |            | Lowering Speed<br>Rated Load or No Load |            | Chain Weight<br>(per foot of lift) |     | Net Weight<br>w/10 ft of lift |      |
|-----------------------------------|----------|----------------|---------|-------------|------------------------|-------|---------------------------|-------|----------------------------------------|------------|-----------------------------------------|------------|------------------------------------|-----|-------------------------------|------|
|                                   | lb       | metric<br>tons |         |             | in                     | mm    | in                        | mm    | ft/min                                 | m/min      | ft/min                                  | m/min      | lb                                 | kg  | lb                            | kg   |
| <b>THREE-PHASE (SINGLE SPEED)</b> |          |                |         |             |                        |       |                           |       |                                        |            |                                         |            |                                    |     |                               |      |
| QCH50-1NS12                       | 275      | 0.125          | 1       | 1           | 17.1                   | 435   | 17.4                      | 441.3 | 32                                     | 9.8        | 32                                      | 9.8        | 0.4                                | 0.2 | 45                            | 20.4 |
| QCH50-1NS25                       | 550      | 0.25           | 1       | 1           | 17.1                   | 435   | 17.4                      | 441.3 | 32                                     | 9.8        | 32                                      | 9.8        | 0.4                                | 0.2 | 45                            | 20.4 |
| QCH50-1NS50                       | 1,100    | 0.50           | 1       | 1           | 17.1                   | 435   | 17.4                      | 441.3 | 32                                     | 9.8        | 32                                      | 9.8        | 0.4                                | 0.2 | 45                            | 20.4 |
| QCH50-2NS100                      | 2,200    | 1              | 2       | 1           | 18.8                   | 476.3 | 18.9                      | 481   | 16                                     | 4.9        | 16                                      | 4.9        | 0.7                                | 0.3 | 50                            | 22.7 |
| QCH100-1NS100                     | 2,200    | 1              | 1       | 2.1         | 21.8                   | 553.2 | 21.5                      | 545.3 | 32                                     | 9.8        | 32                                      | 9.8        | 0.7                                | 0.3 | 99                            | 44.9 |
| QCH100-2NS200                     | 4,400    | 2              | 2       | 2.1         | 24.7                   | 627.1 | 24.4                      | 619.9 | 16                                     | 4.9        | 16                                      | 4.9        | 1.4                                | 0.6 | 110                           | 49.9 |
| QCH300-1NS200                     | 4,400    | 2              | 1       | 4.2         | 25.4                   | 646.1 | 26.4                      | 671.5 | 32                                     | 8          | 32                                      | 9.8        | 1.5                                | 0.7 | 143                           | 64.9 |
| QCH200-2NS300                     | 6,600    | 3              | 2       | 3.2         | 28.7                   | 727.9 | 29.8                      | 756.4 | 16                                     | 4.9        | 16                                      | 4.9        | 3                                  | 1.4 | 161                           | 73   |
| QCH300-2NS400                     | 8,800    | 4              | 2       | 4.2         | 28.7                   | 727.9 | 29.7                      | 753.3 | 16                                     | 4.9        | 16                                      | 4.9        | 3                                  | 1.4 | 168                           | 76.2 |
| QCH500-2NS500                     | 11,000   | 5              | 2       | 4.2         | 28.7                   | 727.9 | 29.7                      | 754.9 | 12.5                                   | 3.8        | 12.5                                    | 3.8        | 3                                  | 1.4 | 168                           | 76.2 |
| <b>THREE-PHASE (DUAL SPEED)</b>   |          |                |         |             |                        |       |                           |       |                                        |            |                                         |            |                                    |     |                               |      |
| QCH50-1ND12                       | 275      | 0.125          | 1       | 1           | 17.1                   | 435   | 17.4                      | 441.3 | 32 / 8                                 | 9.8 / 2.4  | 32 / 8                                  | 9.8 / 2.4  | 0.4                                | 0.2 | 50                            | 22.7 |
| QCH50-1ND25                       | 550      | 0.25           | 1       | 1           | 17.1                   | 435   | 17.4                      | 441.3 | 32 / 8                                 | 9.8 / 2.4  | 32 / 8                                  | 9.8 / 2.4  | 0.4                                | 0.2 | 50                            | 22.7 |
| QCH50-1HD25                       | 550      | 0.25           | 1       | 1           | 17.1                   | 435   | 17.4                      | 441.3 | 50 / 12                                | 15.2 / 3.7 | 50 / 12                                 | 15.2 / 3.7 | 0.4                                | 0.2 | 50                            | 22.7 |
| QCH50-1ND50                       | 1,100    | 0.50           | 1       | 1           | 17.1                   | 435   | 17.4                      | 441.3 | 32 / 8                                 | 9.8 / 2.4  | 32 / 8                                  | 9.8 / 2.4  | 0.4                                | 0.2 | 50                            | 22.7 |
| QCH50-2ND100                      | 2,200    | 1              | 2       | 1           | 18.8                   | 476.3 | 18.9                      | 481   | 16 / 4                                 | 4.9 / 1.2  | 16 / 4                                  | 4.9 / 1.2  | 0.7                                | 0.3 | 55                            | 24.9 |
| QCH100-1ND100                     | 2,200    | 1              | 1       | 2.1         | 21.8                   | 553.2 | 21.5                      | 545.3 | 32 / 8                                 | 9.8 / 2.4  | 32 / 8                                  | 9.8 / 2.4  | 0.7                                | 0.3 | 101                           | 45.8 |
| QCH100-2ND200                     | 4,400    | 2              | 2       | 2.1         | 24.7                   | 627.1 | 24.4                      | 619.9 | 16 / 4                                 | 4.9 / 1.2  | 16 / 4                                  | 4.9 / 1.2  | 1.4                                | 0.6 | 112                           | 50.8 |
| QCH300-1ND200                     | 4,400    | 2              | 1       | 4.2         | 25.4                   | 646.1 | 26.4                      | 671.5 | 32 / 8                                 | 9.8 / 2.4  | 32 / 8                                  | 9.8 / 2.4  | 1.5                                | 0.7 | 147                           | 66.7 |
| QCH200-2ND300                     | 6,600    | 3              | 2       | 3.2         | 28.7                   | 727.9 | 29.8                      | 756.4 | 16 / 4                                 | 4.9 / 1.2  | 16 / 4                                  | 4.9 / 1.2  | 3                                  | 1.4 | 165                           | 74.8 |
| QCH300-2ND400                     | 8,800    | 4              | 2       | 4.2         | 28.7                   | 727.9 | 29.7                      | 753.3 | 16 / 4                                 | 4.9 / 1.2  | 16 / 4                                  | 4.9 / 1.2  | 3                                  | 1.4 | 172                           | 78   |
| QCH500-2ND500                     | 11,000   | 5              | 2       | 4.2         | 28.7                   | 727.9 | 29.7                      | 754.9 | 12.5 / 3                               | 3.8 / 0.9  | 12.5 / 3                                | 3.8 / 0.9  | 3                                  | 1.4 | 172                           | 78   |



Eyebolt and hook suspension



Motorized trolley suspension



PT Series plain trolley with hook suspension

# Quantum Series

0.125 to 5 metric ton lifting capacities

## Handy Handle control — QCH50 models only

This ergonomically designed control enables precise operation at the hook and acts as a robotic power extension of the operator's arm. The load can be positioned and controlled with one hand, freeing the other to position the load.

The Handy Handle can be ordered separately as part of a kit, to convert any 0.125-, 0.25-, and 0.50-ton single-line Quantum hoist, or as an "H" control option on a new hoist. Each Handy Handle comes standard with single- or dual-speed thumb control lever switches and red emergency stop button. A socket connection at the bottom allows the standard hook to be easily replaced by custom-end effectors or grabs.



## Quantum Series Motorized Trolley Specifications – M1, M2, and M4

| Model         | Traverse Speed ft/min (m/min) |                     |                     | Amperage |      |      | Min. in (mm) | Min. in (mm)   | Flange Width in (mm)        |                              |                               |                                | Weight lb (kg) |  |
|---------------|-------------------------------|---------------------|---------------------|----------|------|------|--------------|----------------|-----------------------------|------------------------------|-------------------------------|--------------------------------|----------------|--|
|               | M1                            | M2                  | M4                  | 230V     | 460V | 575V | Beam Height  | Curve Radius   | A                           | B                            | C                             | D                              |                |  |
| QCH50-1NS12   |                               |                     |                     |          |      |      |              |                |                             |                              |                               |                                |                |  |
| QCH50-1ND12   |                               |                     |                     |          |      |      |              |                |                             |                              |                               |                                |                |  |
| QCH50-1NS25   |                               |                     |                     |          |      |      |              |                |                             |                              |                               |                                |                |  |
| QCH50-1ND25   |                               |                     |                     |          |      |      | 4<br>(101.6) | 48<br>(1219.2) | 2.0 - 3.9<br>(50.8 - 99.1)  | 4.0 - 5.9<br>(101.6 - 149.9) | 6.0 - 7.8<br>(152.4 - 198.1)  | 7.9 - 9.4<br>(200.7 - 238.8)   | 60<br>(27.2)   |  |
| QCH50-1NS50   |                               |                     |                     |          |      |      |              |                |                             |                              |                               |                                |                |  |
| QCH50-1ND50   |                               |                     |                     |          |      |      |              |                |                             |                              |                               |                                |                |  |
| QCH50-2NS100  |                               |                     |                     |          |      |      |              |                |                             |                              |                               |                                |                |  |
| QCH50-2ND100  |                               |                     |                     |          |      |      |              |                |                             |                              |                               |                                |                |  |
| QCH100-1NS100 |                               |                     |                     | 1.5      | 0.75 | 0.6  |              |                |                             |                              |                               |                                |                |  |
| QCH100-1ND100 | 48<br>(14.6)                  | 48/16<br>(14.6/4.9) | 72/24<br>(21.9/7.3) |          |      |      | 6<br>(152.4) | 60<br>(1524.0) | 3.0 - 5.5<br>(76.2 - 139.7) | 5.6 - 7.8<br>(142.2 - 198.1) | 7.9 - 10.2<br>(200.7 - 259.1) | 10.3 - 12.6<br>(261.6 - 320.0) | 70<br>(31.7)   |  |
| QCH100-2NS200 |                               |                     |                     |          |      |      |              |                |                             |                              |                               |                                |                |  |
| QCH100-2ND200 |                               |                     |                     |          |      |      |              |                |                             |                              |                               |                                |                |  |
| QCH300-1NS200 |                               |                     |                     |          |      |      |              |                |                             |                              |                               |                                |                |  |
| QCH300-1ND200 |                               |                     |                     |          |      |      |              |                |                             |                              |                               |                                |                |  |
| QCH200-2NS300 |                               |                     |                     |          |      |      |              |                |                             |                              |                               |                                |                |  |
| QCH200-2ND300 |                               |                     |                     |          |      |      | 6<br>(152.4) | 72<br>(1828.8) | 2.2 - 4.7<br>(55.9 - 119.4) | 4.8 - 7.0<br>(121.9 - 177.8) | 7.1 - 9.4<br>(180.3 - 238.8)  | 9.5 - 11.8<br>(241.3 - 299.7)  | 110<br>(49.9)  |  |
| QCH300-2NS400 |                               |                     |                     |          |      |      |              |                |                             |                              |                               |                                |                |  |
| QCH300-2ND400 |                               |                     |                     |          |      |      |              |                |                             |                              |                               |                                |                |  |
| QCH500-2NS500 |                               |                     |                     | 3        | 1.5  | 1.2  |              |                |                             |                              |                               |                                |                |  |
| QCH500-2ND500 |                               |                     |                     |          |      |      |              |                |                             |                              |                               |                                |                |  |

# Quantum Series

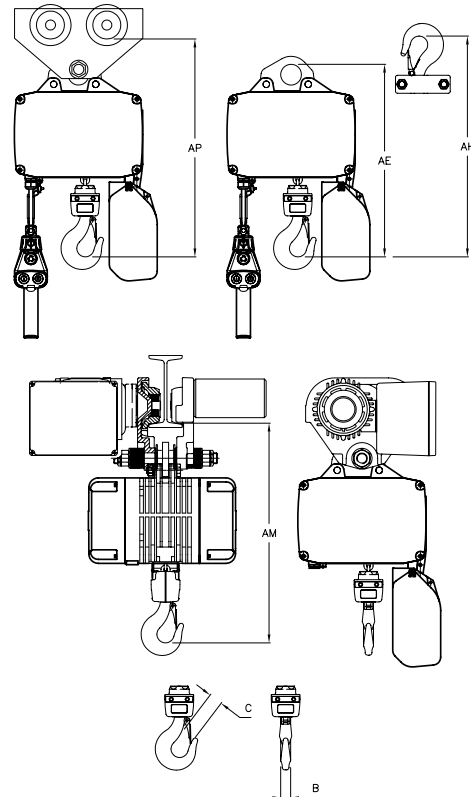
0.125 to 5 metric ton lifting capacities

## Quantum Series Dimensions

| QCH<br>Base Model                 | Capacity |                |       | Headroom     |       |           |       |                   |       | Motor Trolley (AM) |       | Hook (B) |      | Hook (C) |      |
|-----------------------------------|----------|----------------|-------|--------------|-------|-----------|-------|-------------------|-------|--------------------|-------|----------|------|----------|------|
|                                   | lb       | Metric<br>Tons | Falls | Eyebolt (AE) |       | Hook (AH) |       | Push Trolley (AP) |       | in                 | mm    | in       | mm   | in       | mm   |
| <b>THREE PHASE (SINGLE SPEED)</b> |          |                |       |              |       |           |       |                   |       |                    |       |          |      |          |      |
| QCH50-1NS12                       | 275      | 0.125          | 1     | 14.8         | 375.9 | 17.1      | 434.3 | 17.4              | 442   | 16.8               | 426.7 | 0.9      | 22.9 | 1        | 25.4 |
| QCH50-1NS25                       | 550      | 0.25           | 1     | 14.8         | 375.9 | 17.1      | 434.3 | 17.4              | 442   | 16.8               | 426.7 | 0.9      | 22.9 | 1        | 25.4 |
| QCH50-1NS50                       | 1,100    | 0.50           | 1     | 14.8         | 375.9 | 17.1      | 434.3 | 17.4              | 442   | 16.8               | 426.7 | 0.9      | 22.9 | 1        | 25.4 |
| QCH50-2NS100                      | 2,200    | 1              | 2     | 16.4         | 416.6 | 18.8      | 477.5 | 18.9              | 480.1 | 18.3               | 464.8 | 0.9      | 22.9 | 1        | 25.4 |
| QCH100-1NS100                     | 2,200    | 1              | 1     | 19           | 482.6 | 21.8      | 553.7 | 21.5              | 546.1 | 21.3               | 541   | 1        | 25.4 | 1.3      | 33   |
| QCH100-2NS200                     | 4,400    | 2              | 2     | 21.9         | 556.3 | 24.7      | 627.4 | 24.4              | 619.8 | 24.3               | 617.2 | 1        | 25.4 | 1.3      | 33   |
| QCH300-1NS200                     | 4,400    | 2              | 1     | 23.9         | 607.1 | 25.4      | 645.2 | 26.4              | 670.6 | 26.2               | 665.5 | 1.5      | 38.1 | 1.6      | 40.6 |
| QCH200-2NS300                     | 6,600    | 3              | 2     | 27.2         | 690.9 | 28.7      | 729   | 29.8              | 756.9 | 29.3               | 744.2 | 1.5      | 38.1 | 1.6      | 40.6 |
| QCH300-2NS400                     | 8,800    | 4              | 2     | 27.2         | 690.9 | 28.7      | 729   | 29.7              | 754.4 | 29.3               | 744.2 | 1.5      | 38.1 | 1.6      | 40.6 |
| QCH500-2NS500                     | 11,000   | 5              | 2     | 27.2         | 690.9 | 28.7      | 729   | 29.7              | 754.4 | 29.3               | 744.2 | 1.5      | 38.1 | 1.6      | 40.6 |
| <b>THREE PHASE (DUAL SPEED)</b>   |          |                |       |              |       |           |       |                   |       |                    |       |          |      |          |      |
| QCH50-1ND12                       | 275      | 0.125          | 1     | 14.8         | 375.9 | 17.1      | 434.3 | 17.4              | 442   | 16.8               | 426.7 | 0.9      | 22.9 | 1        | 25.4 |
| QCH50-1ND25                       | 550      | 0.25           | 1     | 14.8         | 375.9 | 17.1      | 434.3 | 17.4              | 442   | 16.8               | 426.7 | 0.9      | 22.9 | 1        | 25.4 |
| QCH50-1HD25                       | 550      | 0.25           | 1     | 14.8         | 375.9 | 17.1      | 434.3 | 17.4              | 442   | 16.8               | 426.7 | 0.9      | 22.9 | 1        | 25.4 |
| QCH50-1ND50                       | 1,100    | 0.50           | 1     | 14.8         | 375.9 | 17.1      | 434.3 | 17.4              | 442   | 16.8               | 426.7 | 0.9      | 22.9 | 1        | 25.4 |
| QCH50-2ND100                      | 2,200    | 1              | 2     | 16.4         | 416.6 | 18.8      | 477.5 | 18.9              | 480.1 | 18.3               | 464.8 | 0.9      | 22.9 | 1        | 25.4 |
| QCH100-1ND100                     | 2,200    | 1              | 1     | 19           | 482.6 | 21.8      | 553.7 | 21.5              | 546.1 | 21.3               | 541   | 1        | 25.4 | 1.3      | 33   |
| QCH100-2ND200                     | 4,400    | 2              | 2     | 21.9         | 556.3 | 24.7      | 627.4 | 24.4              | 619.8 | 24.3               | 617.2 | 1        | 25.4 | 1.3      | 33   |
| QCH300-1ND200                     | 4,400    | 2              | 1     | 23.9         | 607.1 | 25.4      | 645.2 | 26.4              | 670.6 | 26.2               | 665.5 | 1.5      | 38.1 | 1.6      | 40.6 |
| QCH200-2ND300                     | 6,600    | 3              | 2     | 27.2         | 690.9 | 28.7      | 729   | 29.8              | 756.9 | 29.3               | 744.2 | 1.5      | 38.1 | 1.6      | 40.6 |
| QCH300-2ND400                     | 8,800    | 4              | 2     | 27.2         | 690.9 | 28.7      | 729   | 29.7              | 754.4 | 29.3               | 744.2 | 1.5      | 38.1 | 1.6      | 40.6 |
| QCH500-2ND500                     | 11,000   | 5              | 2     | 27.2         | 690.9 | 28.7      | 729   | 29.7              | 754.4 | 29.3               | 744.2 | 1.5      | 38.1 | 1.6      | 40.6 |

## Quantum Series Weight

| QCH<br>Base Model                 | Eyebolt or Hook |      | Push Trolley |       | Motor Trolley |       |
|-----------------------------------|-----------------|------|--------------|-------|---------------|-------|
|                                   | lb              | kg   | lb           | kg    | lb            | kg    |
| <b>THREE PHASE (SINGLE SPEED)</b> |                 |      |              |       |               |       |
| QCH50-1NS12                       | 45              | 20.4 | 65           | 29.5  | 105           | 47.6  |
| QCH50-1NS25                       | 45              | 20.4 | 65           | 29.5  | 105           | 47.6  |
| QCH50-1NS50                       | 45              | 20.4 | 65           | 29.5  | 105           | 47.6  |
| QCH50-2NS100                      | 50              | 22.7 | 80           | 36.3  | 110           | 49.9  |
| QCH100-1NS100                     | 99              | 44.9 | 129          | 58.5  | 173           | 78.5  |
| QCH100-2NS200                     | 110             | 49.9 | 165          | 74.8  | 184           | 83.4  |
| QCH300-1NS200                     | 143             | 64.9 | 198          | 89.8  | 257           | 116.6 |
| QCH200-2NS300                     | 161             | 73   | 236          | 107   | 281           | 127.4 |
| QCH300-2NS400                     | 168             | 76.2 | 274          | 124.3 | 282           | 127.9 |
| QCH500-2NS500                     | 168             | 76.2 | 274          | 124.3 | 282           | 127.9 |
| <b>THREE PHASE (DUAL SPEED)</b>   |                 |      |              |       |               |       |
| QCH50-1ND12                       | 50              | 22.7 | 70           | 31.7  | 110           | 49.9  |
| QCH50-1ND25                       | 50              | 22.7 | 70           | 31.7  | 110           | 49.9  |
| QCH50-1HD25                       | 50              | 22.7 | 70           | 31.7  | 110           | 49.9  |
| QCH50-1ND50                       | 50              | 22.7 | 70           | 31.7  | 110           | 49.9  |
| QCH50-2ND100                      | 55              | 24.9 | 85           | 38.5  | 115           | 52.2  |
| QCH100-1ND100                     | 101             | 45.8 | 131          | 59.4  | 175           | 79.4  |
| QCH100-2ND200                     | 112             | 50.8 | 167          | 75.7  | 186           | 84.4  |
| QCH300-1ND200                     | 147             | 66.7 | 202          | 91.6  | 261           | 118.4 |
| QCH200-2ND300                     | 165             | 74.8 | 240          | 108.8 | 285           | 129.3 |
| QCH300-2ND400                     | 172             | 78.0 | 278          | 126.1 | 286           | 129.7 |
| QCH500-2ND500                     | 172             | 78.0 | 278          | 126.1 | 286           | 129.7 |



Electric Chain Hoists

# Quantum Series

0.125 to 5 metric ton lifting capacities

## ► HOW TO ORDER

Example: QCH100-2NS200M1-21-17B4C

QCH100-2NS200

M1

21

17

B

4

C

### Base model

#### 3 phase single speed

QCH50-1NS12  
QCH50-1NS25  
QCH50-1NS50  
QCH50-2NS100  
QCH100-1NS100  
QCH100-2NS200  
QCH300-1NS200  
QCH200-2NS300  
QCH300-2NS400  
QCH500-2NS500

#### 3 phase dual-speed

QCH50-1ND12  
QCH50-1ND25  
QCH50-1HD25  
QCH50-1ND50  
QCH50-2ND100  
QCH100-1ND100  
QCH100-2ND200  
QCH300-1ND200  
QCH200-2ND300  
QCH300-2ND400  
QCH500-2ND500

### Suspension type

E = Eye bolt  
H = Hook  
P = Plain trolley ("PT" Series)  
M1 = Motorized trolley (normal speed 48 fpm)  
M2 = Motorized trolley (normal/dual speed 48/16 fpm)  
M4 = Motorized trolley (high/dual speed 96/24 fpm)

### Lift (feet)

10 = Standard  
15 = Standard  
20 = Standard  
XX = Specify length

### Pendent drop (feet)

6 = Standard  
11 = Standard  
16 = Standard  
XX = Specify length

### Flange width (See catalog for specifications)

- = Eye bolt or hook mount  
A = See flange width chart  
B = See flange width chart  
C = See flange width chart  
D = See flange width chart

### Voltage

3 = 230/3/60  
4 = 460/4/60  
5 = 575/3/60  
6 = 380/3/50\*  
(\* = these units have extended lead times and are not UL or C-UL (Canadian UL) listed)

### Options

B = Trolley brake  
C = Chain container  
E = External strain relief  
F = XX, specify power cord length (standard is 15 ft on E, H, and P, and 3 ft on M1-M4 suspensions)  
H = Handy Handle (QCH50 single fall only)  
K = 110 volt control (3 phase models only)  
P = Pendent with vertical aligned buttons  
P2 = Pendent with 2 extra vertical aligned buttons  
P4 = Pendent with 4 extra vertical aligned buttons  
Y = Bullard top hook  
Z = Bullard bottom hook

# ULE2 Ultra-Lo Series

0.25 to 24 ton lifting capacity

## Features

The complete line of low-headroom Ingersoll Rand worm-gear-driven electric and air hoists provides smooth, quiet, trouble-free operation. All models are tested in accordance with ANSI B30.16 overhead hoist standards.

- Large-diameter chain wheels for improved chain wear
- Worm gear drive for maximum control and durability
- Plain, motorized, and hand chain trolleys
- Dual up and down limits for added safety
- NEMA-12 enclosure for weather-resistant pendant controls
- Design flexibility allows custom configurations to be offered and priced on request
- Dual- and self-braking worm drive and spring-applied motor brake
- Explosion-proof units and spark- and corrosion-resistant features can be customized to fit applications and priced on request
- Quick response time to quotes and reduced lead time on delivery



## ULE2 Electric Series Specifications

| Model         | Capacity |           |         | Motor<br>hp | Trolley Mount<br>Headroom |       | Lifting Speed                   |                                | Lowering Speed                  |                                | Net Weight<br>Plain Trolley |        | Net Weight<br>Geared Trolley |        | Net Weight<br>Motorized Trolley |        |
|---------------|----------|-----------|---------|-------------|---------------------------|-------|---------------------------------|--------------------------------|---------------------------------|--------------------------------|-----------------------------|--------|------------------------------|--------|---------------------------------|--------|
|               | lb       | U.S. tons | # Falls |             | in                        | mm    | Rated Load or No Load<br>ft/min | Rated Load or No Load<br>m/min | Rated Load or No Load<br>ft/min | Rated Load or No Load<br>m/min | lb                          | kg     | lb                           | kg     | lb                              | kg     |
| ULE2_010-8-6  | 2,000    | 1         | N/A     | 2           | 7                         | 177.8 | 10                              | 3.1                            | 10                              | 3.1                            | 440                         | 199.5  | 470                          | 213.2  | 480                             | 217.7  |
| ULE2_015-8-6  | 3,000    | 1.5       | N/A     | 2           | 7                         | 177.8 | 10                              | 3.1                            | 10                              | 3.1                            | 440                         | 199.5  | 470                          | 213.2  | 480                             | 217.7  |
| ULE2_020-8-6  | 4,000    | 2         | N/A     | 2           | 7                         | 177.8 | 10                              | 3.1                            | 10                              | 3.1                            | 440                         | 199.5  | 470                          | 213.2  | 480                             | 217.7  |
| ULE2_030-8-6  | 6,000    | 3         | N/A     | 2           | 8                         | 203.2 | 5                               | 1.5                            | 5                               | 1.5                            | 540                         | 244.9  | 570                          | 258.5  | 580                             | 263    |
| ULE2_040-8-6  | 8,000    | 4         | N/A     | 2           | 8.5                       | 215.9 | 5                               | 1.5                            | 5                               | 1.5                            | 540                         | 244.9  | 570                          | 258.5  | 580                             | 263    |
| ULE2_050-8-6  | 10,000   | 5         | N/A     | 4           | 9.5                       | 241.3 | 7                               | 2.1                            | 7                               | 2.1                            | 1,280                       | 580.5  | 1,340                        | 607.7  | 1,310                           | 594.1  |
| ULE2_060-8-6  | 12,000   | 6         | N/A     | 4           | 9.5                       | 241.3 | 7                               | 2.1                            | 7                               | 2.1                            | 1,280                       | 580.5  | 1,340                        | 607.7  | 1,310                           | 594.1  |
| ULE2_080-8-6  | 16,000   | 8         | N/A     | 4           | 12                        | 304.8 | 4                               | 1.2                            | 4                               | 1.2                            | 1,350                       | 612.2  | 1,480                        | 671.2  | 1,400                           | 634.9  |
| ULE2_100-8-6  | 20,000   | 10        | N/A     | 4           | 12.5                      | 317.5 | 3.5                             | 1.1                            | 3.5                             | 1.1                            | 1,730                       | 784.6  | 1,810                        | 820.9  | 1,780                           | 807.3  |
| ELE2_120-8-6* | 24,000   | 12        | N/A     | 4           | 12.5                      | 317.5 | 3.5                             | 1.1                            | 3.5                             | 1.1                            | 1,730                       | 784.6  | 1,810                        | 820.9  | 1,780                           | 807.3  |
| ULE2_160-8-6* | 32,000   | 16        | N/A     | 4           | 14.5                      | 368.3 | 2                               | 0.6                            | 2                               | 0.6                            | 2,300                       | 1043.1 | 2,380                        | 1079.4 | 2,350                           | 1065.8 |
| ULE2_200-8-6* | 40,000   | 20        | N/A     | 4           | 18                        | 457.2 | 1.7                             | 0.5                            | 1.7                             | 0.5                            | 2,650                       | 1201.8 | 2,810                        | 1274.4 | 2,750                           | 1247.2 |
| ULE2_240-8-6* | 48,000   | 24        | N/A     | 4           | 18                        | 457.2 | 1.7                             | 0.5                            | 1.7                             | 0.5                            | 2,650                       | 1201.8 | 2,810                        | 1274.4 | 2,750                           | 1247.2 |

### Notes:

Standard lift is 10 ft.

\* For over 10 U.S. ton capacity, straight track operation is recommended.

Curved radius must be specified on orders, since wheels must be modified to negotiate curves.

Curves less than minimum radius may be fitted upon application. Consult Customer Service for further information.

ULA2 air hoist specifications and dimensions are similar. Consult Customer Service if accurate data is required.

# ULE2 Ultra-Lo Series

0.25 to 24 ton lifting capacity

## ULE2 Series Dimensions†

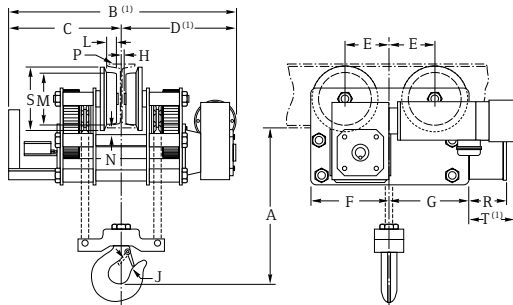
| Model        | A<br>in | B<br>in | C<br>in | D<br>in | E<br>in | E1<br>in | F<br>in | G<br>in | H<br>in | J<br>in | L<br>in | M<br>in | N<br>in | P*<br>in | R<br>in | S<br>in | T**<br>in |
|--------------|---------|---------|---------|---------|---------|----------|---------|---------|---------|---------|---------|---------|---------|----------|---------|---------|-----------|
| ULE2_010-8-6 | 7       | 33      | 16.5    | 16.5    | 7.8     | 7.8      | 12      | 10      | 0.6     | 1.1     | 1.1     | 4.5     | 0.9     | S6X12.5  | 6       | 6       | 9.3       |
| ULE2_015-8-6 | 7       | 33      | 16.5    | 16.5    | 7.8     | 7.8      | 12      | 10      | 0.6     | 1.1     | 1.1     | 4.5     | 0.9     | S6X12.5  | 6       | 6       | 9.3       |
| ULE2_020-8-6 | 7       | 33      | 16.5    | 16.5    | 7.8     | 7.8      | 12      | 10      | 0.6     | 1.1     | 1.1     | 4.5     | 0.9     | S6X12.5  | 6       | 6       | 9.3       |
| ULE2_030-8-6 | 8       | 33      | 16.5    | 16.5    | 9       | 9        | 14      | 13      | 0.6     | 1.3     | 1.3     | 6.4     | 1       | S8X18.4  | 6       | 8       | 5.5       |
| ULE2_040-8-6 | 8.5     | 33      | 16.5    | 16.5    | 9       | 9        | 14      | 13      | 0.6     | 1.7     | 1.3     | 6.4     | 1       | S8X18.4  | 6       | 8       | 5.5       |
| ULE2_050-8-6 | 9.5     | 50.5    | 23.5    | 24.9    | 7.4     | 7.4      | 12      | 15      | 0.9     | 1.7     | 1.4     | 7.2     | 0.9     | S10X25.4 | 6       | 9       | 12        |
| ULE2_060-8-6 | 9.5     | 50.5    | 23.5    | 24.9    | 7.4     | 7.4      | 12      | 15      | 0.9     | 1.7     | 1.4     | 7.2     | 0.9     | S10X25.4 | 6       | 9       | 12        |
| ULE2_080-8-6 | 12      | 50.5    | 23.5    | 24.9    | 8.4     | 8.9      | 14      | 13.5    | 0.6     | 2.1     | 1.7     | 8.3     | 1.1     | S10X25.4 | 6       | 10      | 12        |
| ULE2_100-8-6 | 12.5    | 50.5    | 23.5    | 24.9    | 8.5     | 9.8      | 15.6    | 14.4    | 0.6     | 2.3     | 1.8     | 9.8     | 0.9     | S12X31.8 | 6       | 11.7    | 10        |
| ULE2_120-8-6 | 12.5    | 50.5    | 23.5    | 24.9    | 8.5     | 9.8      | 15.6    | 14.4    | 0.6     | 2.3     | 1.8     | 9.8     | 0.9     | S12X31.8 | 6       | 11.7    | 10        |
| ULE2_160-8-6 | 14.5    | 54.5    | 25.5    | 26.9    | 11.9    | 11.9     | 18.6    | 18.6    | 0.6     | 3       | 2       | 11.8    | 1       | S15X42.9 | 6       | 13.5    | 3.5       |
| ULE2_200-8-6 | 18      | 54.5    | 25.5    | 26.9    | 12.1    | 12.4     | 19.3    | 19      | 0.8     | 3.6     | 2       | 11.8    | 1       | S18X54.7 | 6       | 13.5    | 2.5       |
| ULE2_240-8-6 | 18      | 54.5    | 25.5    | 26.9    | 12.1    | 12.4     | 19.3    | 19      | 0.8     | 3.6     | 2       | 11.8    | 1       | S18X54.7 | 6       | 13.5    | 2.5       |

**Notes:**

†ULA2 air hoist specifications and dimensions are similar. Consult Customer Service for further information.

\*Minimum standard I-beam for proper wheel running clearance. Contact factory for smaller beams. Customer must verify beam is adequate for applied loads.

\*\*For standard motor and brake only.



**▶ HOW TO ORDER**

Example: ULE2-MT-010-10-6TW

|                                                                         |                                                                                                                                                                                    |                                                                                                                                                                                                                                                                                                                                                                                                                                       |                                                                                         |                                                                                         |                                                                                                                                                                                                                                                                                                                                                                                                                                                       |
|-------------------------------------------------------------------------|------------------------------------------------------------------------------------------------------------------------------------------------------------------------------------|---------------------------------------------------------------------------------------------------------------------------------------------------------------------------------------------------------------------------------------------------------------------------------------------------------------------------------------------------------------------------------------------------------------------------------------|-----------------------------------------------------------------------------------------|-----------------------------------------------------------------------------------------|-------------------------------------------------------------------------------------------------------------------------------------------------------------------------------------------------------------------------------------------------------------------------------------------------------------------------------------------------------------------------------------------------------------------------------------------------------|
| <p><b>ULE2</b></p> <p>Base model<br/>ULA2 = Air<br/>ULE2 = Electric</p> | <p><b>MT</b></p> <p>Trolley options<br/>PT = Plain tapered<br/>PF = Plain flat<br/>MT = Motorized tapered<br/>MF = Motorized flat<br/>GT = Geared tapered<br/>GF = Geared flat</p> | <p><b>010</b></p> <p>Capacity<br/>010 = 909 kg = 2,000 lb<br/>015 = 1364 kg = 3,000 lb<br/>020 = 1818 kg = 4,000 lb<br/>030 = 2727 kg = 6,000 lb<br/>040 = 3636 kg = 8,000 lb<br/>050 = 4545 kg = 10,000 lb<br/>060 = 5455 kg = 12,000 lb<br/>080 = 7273 kg = 16,000 lb<br/>100 = 9091 kg = 20,000 lb<br/>120 = 10909 kg = 24,000 lb<br/>160 = 14545 kg = 32,000 lb<br/>200 = 18182 kg = 40,000 lb<br/>240 = 21818 kg = 48,000 lb</p> | <p><b>10</b></p> <p>Lift (ft)<br/>10 = 10 ft<br/>(standard)<br/>XX = Specify length</p> | <p><b>6</b></p> <p>Pendent drop<br/>6 = 6 ft<br/>(standard)<br/>XX = Specify length</p> | <p><b>TW</b></p> <p>Options<br/>C = Chain container<br/>X = Electric mainline power interrupt and pendent buttons<br/>W = Electric (NEMA 4) watertight control box, limit switches and pendent<br/>T = Electric thermal overload relays — each single speed motor<br/>L = Electric fused control per leg of transformer secondary<br/>E = Electric motor fuses — single speed hoist<br/>F = Electric motor fuses — single speed hoist and trolley</p> |
|-------------------------------------------------------------------------|------------------------------------------------------------------------------------------------------------------------------------------------------------------------------------|---------------------------------------------------------------------------------------------------------------------------------------------------------------------------------------------------------------------------------------------------------------------------------------------------------------------------------------------------------------------------------------------------------------------------------------|-----------------------------------------------------------------------------------------|-----------------------------------------------------------------------------------------|-------------------------------------------------------------------------------------------------------------------------------------------------------------------------------------------------------------------------------------------------------------------------------------------------------------------------------------------------------------------------------------------------------------------------------------------------------|

**NOTES:**

S\*COR\*E options and marine finish are available.  
Consult factory for flange widths over - 6" up to 1 t - 6.625" up to 1.50 and 2 t 7.25" on 3 and 4 t - 8.25" on 5 to 12 t.  
Ultra-Lo hoists are not adjustable for varying beam sizes.  
Beam type, size, height, width and curve radius required for all orders.  
Customer to verify their beam is adequate for loads applied.

Electric Chain Hoists



# Trolleys and Beam Clamps



Ingersoll Rand offers a wide variety of plain, geared, or powered trolleys for use with all Ingersoll Rand hoists. We also offer the MTK air-powered tractor to push and pull a trolley-mounted hoist or other suspended or supported rolling load. Ingersoll Rand trolleys are available in either hook-on or rigid-mount styles.

For maximum convenience and lifting system integrity, we recommend ordering the trolley at the same time as the hoist by using the appropriate model-driver suspension code. Information relating to the various trolleys and MTK Series tractor can be found on the following pages.

# Trolley selection guide

## 0.50 to 20 metric ton lifting capacities

The chart below cross-references all air chain hoist models and sizes with recommended trolleys. Always follow safe installation and operating procedures with any overhead system. Please call an authorized Ingersoll Rand distributor or representative for assistance with application and selection.

### Hoist / Trolley Selection Guide

| For Use With Hoist Series                   | Plain Hook-on | Plain Rigid    | Geared Hook-on | Geared Rigid   | Motorized Rigid |
|---------------------------------------------|---------------|----------------|----------------|----------------|-----------------|
| <b>STANDARD TROLLEYS (SUSPENSION CODE)*</b> |               |                |                |                |                 |
| ML250 / 500K / KS                           | PT005-8       | RT010S-P00AN   | GT010-8-10     | RT010S-G08AN   | RT010S-307AN    |
| ML1000K / S                                 | PT010-8       | RT010S-P00AM   | GT010-8-10     | RT010S-G08AM   | RT010S-307AM    |
| ML250KR                                     | PT005-8SB     | RT010B-P00AN   | GT010-8-10SB   | RT010S-G08AN   | RT010S-307AN    |
| ML500KR                                     | PT005-8SB     | RT010B-P00AM   | GT010-8-10SB   | RT010S-G08AM   | RT010S-307AM    |
| HL1000K                                     | PT010-8       | TIR6600S-P00AJ | GT010-8-10     | TIR6600S-G08AJ | TIR6600S-307AJ  |
| HL1000KR                                    | PT010-8SB     | TIR6600B-P00AJ | GT010-8-10SB   | TIR6600B-G08AJ | TIR6600B-307AJ  |
| HL1500K                                     | PT020-8       | TIR6600S-P00AJ | GT020-8-10     | TIR6600S-G08AJ | TIR6600S-307AJ  |
| HL2000K                                     | PT020-8       | TIR6600S-P00AK | GT020-8-10     | TIR6600S-G08AK | TIR6600S-307AK  |
| HL3000K                                     | PT030-8       | TIR6600S-P00AK | GT030-8-10     | TIR6600S-G08AK | TIR6600S-307AK  |
| HL4500K                                     | PT050-8       | TIR132S-P00AP  | GT050-8-10     | TIR132S-G08AP  | TIR132S-307AP   |
| HL6000K                                     | TIR132S-P00H  | TIR132S-P00AP  | GT050-8-10     | TIR132S-G08AP  | TIR132S-307AP   |
| 7700 Series <1 ton                          | PT005-8       | RT010S-P00AR   | GT010-8-10     | RT010S-G08AR   | RT010S-307AR    |
| 7700 Series 1 ton                           | PT010-8       | RT010S-P00AR   | GT010-8-10     | RT010S-G08AR   | RT010S-307AR    |
| 7790 Series 1 ton                           | PT010-8       | TIR6600S-P00AA | GT010-8-10     | TIR6600S-G08AA | TIR6600S-307AA  |
| 7792 Series                                 | PT020-8       | TIR6600S-P00AA | GT020-8-10     | TIR6600S-G08AA | TIR6600S-307AA  |
| 7700 Series Spark Resistant                 | PT005-8SB     | RT010B-P00AR   | GT010-8-10SB   | RT010S-G08AR   | RT010S-307AR    |
| 7796AL Spark Resistant                      | PT010-8SB     | TIR6600B-P00AA | GT010-8-10SB   | TIR6600B-G08AA | TIR6600B-307AA  |
| 7798AL / 7799AL Spark Resistant             | PT020-8SB     | TIR6600B-P00AA | GT020-8-10SB   | TIR6600B-G08AA | TIR6600B-307AA  |
| Quantum QCH50-1                             | PT005-8       | N/A            | GT010-8-10     | N/A            | QMT50           |
| Quantum QCH50-2                             | PT010-8       | N/A            | GT010-8-10     | N/A            | QMT50           |
| Quantum QCH100-1                            | PT010-8       | N/A            | GT010-8-10     | N/A            | QMT150          |
| Quantum QCH100-2                            | PT020-8       | N/A            | GT020-8-10     | N/A            | QMT150          |
| Quantum QCH200-2                            | PT030-8       | N/A            | GT030-8-10     | N/A            | QMT300          |
| Quantum QCH300-1                            | PT020-8       | N/A            | GT020-8-10     | N/A            | QMT300          |
| Quantum QCH300-2                            | PT050-8       | N/A            | GT050-8-10     | N/A            | QMT300          |
| Quantum QCH500-2                            | PT050-8       | N/A            | GT050-8-10     | N/A            | QMT300          |

PT Series



TIR Series



RT Series



GT Series



TIR Series



# PT and GT Series trolley

0.50 to 20 metric ton capacities

## Features

**PT plain and GT hand-gearred hook-on style trolley rated for manual or powered hoists having the versatility to fit most types of beams with compatibility to all hoist brands.**

- The 5:1 design factor allows use with both manual or powered hoists. Meets pertinent U.S. (ASME/ANSI and CMAA), Canadian and European standards
- The side plates, including the rail sweeps/drop stops, are made of cold-formed steel for strength, durability, and even load distribution
- The wheels are cast iron and the universal tread fits either flat or tapered beams
- Wheels run on sealed, "Lube-for-Life" ball bearings. Smoother rolling with less effort and maintenance
- Additional gearing in the 20-ton trolley allows operation by one hand chain
- Painted black for coordination with hoists of all colors

## Options

- FDA-approved nickel composite plated finish for corrosion resistance — available on PT005 and PT010 only
- Solid bronze alloy wheels for maximum spark resistance
- Wider hanger shaft capabilities allow standard trolleys to fit almost any S-beam or patented track beam, extension shaft kits are stocked



PT010-8



GT020-8-10



GT100-12-10

## PT and GT Series Hook-on Trolley Specifications

| Model                  | Capacity |             | Flange Adjustment | Min. Beam Height | Min. Curve Radius | Weight | Wide Flange Kit no. (order separate) | Flange Adjustment | Weight |
|------------------------|----------|-------------|-------------------|------------------|-------------------|--------|--------------------------------------|-------------------|--------|
|                        | lb       | metric tons | in                | in               | in                | lb     |                                      | in                | lb     |
| <b>STANDARD SERIES</b> |          |             |                   |                  |                   |        |                                      |                   |        |
| PT005-8                | 1,100    | 0.50        | 2.6 - 8           | 4                | 36                | 19.7   | PT005-WFK                            | 8 - 13            | 5.5    |
| PT010-8                | 2,200    | 1           | 3 - 8             | 5                | 36                | 30.7   | PT010-WFK                            | 8 - 13            | 9.5    |
| PT020-8                | 4,400    | 2           | 3.3 - 8           | 6                | 48                | 60.5   | PT020-WFK                            | 8 - 13            | 10     |
| PT030-8                | 6,600    | 3           | 3.9 - 8           | 7                | 42                | 73.2   | PT030-WFK                            | 8 - 13            | 16.3   |
| PT050-8                | 11,000   | 5           | 4.6 - 8           | 8                | 60                | 110.3  | PT050-WFK                            | 8 - 13            | 24.8   |
| PT100-12               | 22,000   | 10          | 7 - 13            | 10               | 83                | 205    | NA                                   | NA                | NA     |
| GT010-8-10             | 2,200    | 1           | 3 - 8             | 5                | 36                | 43.7   | PT010-WFK                            | 8 - 13            | 9.5    |
| GT020-8-10             | 4,400    | 2           | 3.3 - 8           | 6                | 48                | 73.5   | PT020-WFK                            | 8 - 13            | 10     |
| GT030-8-10             | 6,600    | 3           | 3.9 - 8           | 7                | 42                | 86.2   | PT030-WFK                            | 8 - 13            | 16.3   |
| GT-050-8-10            | 11,000   | 5           | 4.6 - 8           | 8                | 60                | 123.3  | PT050-WFK                            | 8 - 13            | 24.8   |
| GT100-12-10            | 22,000   | 10          | 7 - 13            | 10               | 83                | 227    | NA                                   | NA                | NA     |
| GT200-12               | 44,000   | 20          | 7 - 13            | 12               | 138               | 540    | NA                                   | NA                | NA     |

### ► HOW TO ORDER

Example: GT010-8-SB

| GT                                             | 010                  | -                     | 8                      | -                                                                                                   | SB |
|------------------------------------------------|----------------------|-----------------------|------------------------|-----------------------------------------------------------------------------------------------------|----|
| Series                                         | Capacity             |                       | Hand chain drop        | Options                                                                                             |    |
| GT = Hand-gearred hook-on<br>PT = Push hook-on | <b>GT Series</b>     | <b>PT Series</b>      | GT Series only<br>Feet | NC = Nickel-plated trolley (available on PT Series 0.5 and 1 ton models only)<br>SB = Bronze wheels |    |
|                                                | 010 = 1 metric ton   | 005 = 0.5 metric tons |                        |                                                                                                     |    |
|                                                | 020 = 2 metric tons  | 010 = 1 metric ton    |                        |                                                                                                     |    |
|                                                | 030 = 3 metric tons  | 020 = 2 metric tons   |                        |                                                                                                     |    |
|                                                | 050 = 5 metric tons  | 030 = 3 metric tons   |                        |                                                                                                     |    |
|                                                | 100 = 10 metric tons | 050 = 5 metric tons   |                        |                                                                                                     |    |
|                                                | 200 = 20 metric tons | 100 = 10 metric tons  |                        |                                                                                                     |    |

# PT and GT Series trolley

0.50 to 20 metric ton capacities

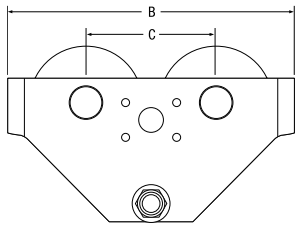
## PT and GT Series Hook-on Trolley Dimensions (in)

| Model                  | A    | A(-8) | B    | C    | D    | E   | F    | G   | H    | J   | K   | L   | M   | N    | P   | P(-8) | R   | S   | T   |
|------------------------|------|-------|------|------|------|-----|------|-----|------|-----|-----|-----|-----|------|-----|-------|-----|-----|-----|
| <b>STANDARD SERIES</b> |      |       |      |      |      |     |      |     |      |     |     |     |     |      |     |       |     |     |     |
| PT005-8                | 2.6  | 5.9   | 10   | 4.5  | 1    | 4   | 1.1  | 3.5 | 2.1  | 0.8 | .1  | 6.6 | -   | 3.9  | -   | 12.3  | 1.3 | 1.6 | -   |
| PT010-8                | 2.5  | 5.9   | 13   | 5.2  | 1.3  | 4.4 | 1.6  | 4.2 | 2.8  | 0.8 | 1   | 6.9 | -   | 4.3  | -   | 12.9  | 1.5 | 1.6 | -   |
| PT020-8                | 2.6  | 6.1   | 14.6 | 6.8  | 1.3  | 5.3 | 1.3  | 5.8 | 4.3  | 1.1 | 1.2 | 7.5 | -   | 4.3  | -   | 13.8  | 1.5 | 1.6 | -   |
| PT030-8                | 2.6  | 7.9   | 14   | 6.4  | 1.6  | 5.5 | 1.6  | 5.8 | 4.5  | 1.1 | 1.4 | 8.6 | -   | 5.4  | -   | 14.1  | 1.9 | 2.6 | -   |
| PT050-8                | 2.8  | 8.1   | 15.5 | 7.1  | 1.6  | 5.8 | 2.2  | 6.2 | 4.5  | 1.6 | 1.4 | 9.8 | -   | 6.6  | -   | 15.6  | 2.5 | 2.6 | -   |
| PT100-12               | 11.8 | -     | 17.9 | 19.3 | 20.8 | 5   | 7.9  | 2   | 7.4  | 5.9 | 4.2 | 1.8 | 3.2 | 17.1 | 3.7 | -     | 1   | -   | -   |
| GT010-8-10             | 2.5  | 5.9   | 13   | 5.2  | 1.3  | 4.4 | 1.6  | 4.2 | 2.8  | 0.8 | 1   | 6.9 | -   | 4.3  | -   | 12.9  | 1.5 | 1.6 | 7.8 |
| GT020-8-10             | 2.6  | 6.1   | 14.9 | 6.8  | 1.3  | 5.3 | 1.3  | 5.8 | 4.3  | 1.1 | 1.2 | 7.5 | -   | 4.3  | -   | 13.8  | 1.5 | 1.6 | 7.8 |
| GT030-8-10             | 2.6  | 7.9   | 14   | 6.4  | 1.6  | 5.5 | 1.6  | 5.8 | 4.5  | 1.1 | 1.4 | 8.6 | -   | 5.4  | -   | 14.1  | 1.9 | 2.6 | 8.1 |
| GT050-8-10             | 2.8  | 8.1   | 15.5 | 7.1  | 1.6  | 5.8 | 2.2  | 6.2 | 4.5  | 1.6 | 1.4 | 9.8 | -   | 6.6  | -   | 15.6  | 2.5 | 2.6 | 8.5 |
| GT100-12-10            | 11.8 | -     | 17.9 | 19.3 | 20.8 | 5   | 7.9  | 2   | 7.4  | 5.9 | 4.2 | 1.8 | 3.2 | 17.1 | 3.7 | -     | 1   | -   | -   |
| GT200-12-10            | 10.5 | -     | 25.3 | 24.5 | 22.5 | 6.7 | 11.8 | 2.6 | 10.8 | 7.9 | 5.9 | 2.8 | 4.3 | 18   | 4.5 | -     | 4.9 | -   | -   |

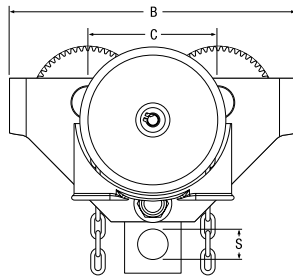
## PT Trolley Adapters

### Stationary

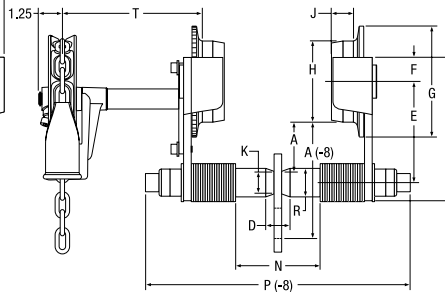
Adapter comes with any 7700 Series hoist ordered as a trolley-suspended model. Adapter can be ordered separately to convert existing hook-suspended 7700 Series hoists for stationary mounting to a PT Series trolley. Order 47717 (shown) for 0.25- and 0.50-ton models; 47716 for 1-ton models. Spacer kits are required. Refer to the price list for details.



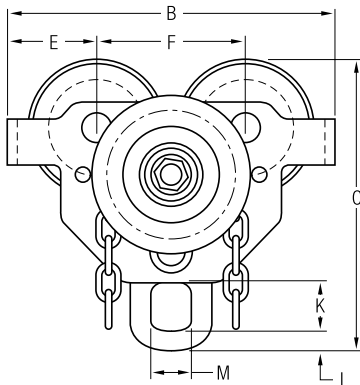
**PT010 - PT050**  
plain trolley/without tag



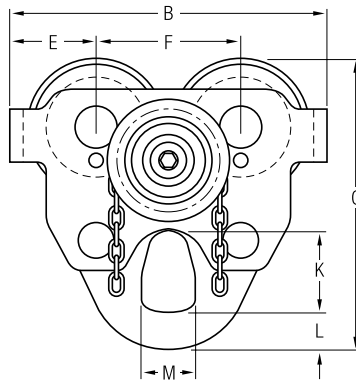
**GT010 - GT050**  
geared trolley



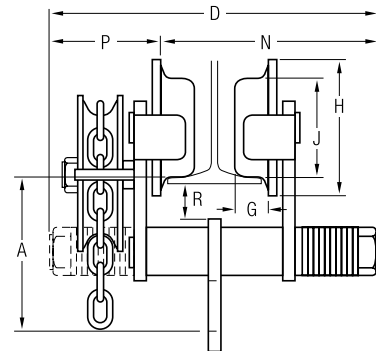
**PT010 - PT050 and GT010 - GT050**  
plain and geared trolley



**GT100**  
geared trolley



**GT200**  
geared trolley



**GT100 and GT200**  
geared trolley

# TIR Series

0.25 to 6 metric ton capacities

## Features

**TIR Series trolleys are supplied as standard equipment for MLK Series, and HLK Series hoists when specified. The TIR trolley may also be used as a hook-on trolley with any hoist.**

- Meets ANSI B30.16 for hoisting requirements — 5:1 minimum safety factor
- All-steel construction
- Universal wheels fit both flat and tapered beam flanges
- Rail sweeps are integral with the side plates
- Cast-iron wheels roll easily on permanently greased sealed bearings
- 7' pendent control or 8' hand chain length — other lengths available
- Tight turning radius
- Standard 3-ton trolley fits 3.25" – 6" flange width, 6-ton fits 4.25" – 7.25"
- Modular trolley frame allows hook-on, plain rigid, geared, and motorized configurations in the field
- Motorized trolley has automatic disc brake
- Low air consumption at only 35 scfm on motorized versions

## Options

- Solid bronze wheels for maximum spark resistance
- Wide flange kit for 3-ton fits 6" – 12"
- Hook-on adapters
- Lug adapters for rigid-mounting Ingersoll Rand hoist

## TIR Series Trolley Specifications

| Trolley Type                  | Capacity       |             | Min. Curve Radius<br>in | Standard Flange Adj.<br>in | Hand Chain/Pendent Drop<br>ft | Trolley Weight<br>lb |
|-------------------------------|----------------|-------------|-------------------------|----------------------------|-------------------------------|----------------------|
|                               | lb             | metric tons |                         |                            |                               |                      |
| <b>TIR6600 TROLLEY SERIES</b> |                |             |                         |                            |                               |                      |
| Plain hook-on                 | 550 - 6,600    | 0.25 - 3    | 42                      | 3.3 - 6                    | N/A                           | 31                   |
| Plain rigid                   | 550 - 6,600    | 0.25 - 3    | 42                      | 3.3 - 6                    | N/A                           | 34                   |
| Geared hook-on                | 550 - 6,600    | 0.25 - 3    | 42                      | 3.3 - 6                    | 7                             | 34                   |
| Geared rigid                  | 550 - 6,600    | 0.25 - 3    | 42                      | 3.3 - 6                    | 7                             | 37                   |
| Motorized                     | 550 - 6,600    | 0.25 - 3    | 42                      | 3.3 - 6                    | 7                             | 35                   |
| Plain                         | 550 - 6,600    | 0.25 - 3    | 42                      | 3.3 - 6                    | N/A                           | 25                   |
| <b>TIR132 TROLLEY SERIES</b>  |                |             |                         |                            |                               |                      |
| Plain hook-on                 | 9,900 - 13,200 | 4.5 - 6     | 60                      | 4.3 - 7.3                  | N/A                           | 154                  |
| Plain rigid                   | 9,900 - 13,200 | 4.5 - 6     | 60                      | 4.3 - 7.3                  | N/A                           | 150                  |
| Geared hook-on                | 9,900 - 13,200 | 4.5 - 6     | 60                      | 4.3 - 7.3                  | 7                             | 157                  |
| Geared rigid                  | 9,900 - 13,200 | 4.5 - 6     | 60                      | 4.3 - 7.3                  | 7                             | 153                  |
| Motorized                     | 9,900 - 13,200 | 4.5 - 6     | 60                      | 4.3 - 7.3                  | 7                             | 155                  |



TIR6600 plain trolley



TIR6600 motorized trolley

# TIR Series

0.25 to 6 metric ton capacities

## TIR Series Flange and Adapters Kits

| Flange Kits          | Flange Width (in) | Part Number |
|----------------------|-------------------|-------------|
| Standard             | 3.3 - 6           | 49558       |
| Wide                 | 6 - 12            | 49559       |
| Adapter Kits         | Option Code       | Part Number |
| Hook-on              | H                 | TIR-426     |
| 90° Trolley Adapter* |                   | 43111       |

\*Used to mount any 7790 Series hoist parallel to suspension beam. Adapter increases headroom dimension by 1.625 inches.

## Motorized Trolley Specifications

| Hoist Capacity<br>lb | metric tons | Trolley Speed On Beam* |
|----------------------|-------------|------------------------|
|                      |             | fpm                    |
| 550                  | 0.25        | 95                     |
| 1,100                | 0.50        | 93                     |
| 2,200                | 1           | 88                     |
| 3,300                | 1.50        | 84                     |
| 4,400                | 2           | 80                     |
| 6,600                | 3           | 71                     |
| 9,900                | 4.50        | 60                     |
| 12,000               | 6           | 45                     |

### Note:

\*Beam in good condition.

### ► HOW TO ORDER

Example: TIR6600S-G08-D-P

| TIR    | 6600                                       | S                                                     | - | G                                                               | 08                                                     | D                                                   | P                                                   |
|--------|--------------------------------------------|-------------------------------------------------------|---|-----------------------------------------------------------------|--------------------------------------------------------|-----------------------------------------------------|-----------------------------------------------------|
| Series | Capacity                                   | Standard or S*COR*E                                   |   | Type                                                            | Chain or pendent length                                | Flange width (in)                                   | Suspension type                                     |
| TIR    | 6600 = 6,600 lb/<br>3 ton                  | S = Standard cast<br>iron wheels                      |   | P = Plain trolley <sup>(1)</sup>                                | 07 = 7 ft (standard<br>for pendent)                    | A = Fits 3 ton<br>(3.3 - 6)<br>6 ton<br>(4.3 - 7.3) | P = Plain (without lug) <sup>(1)</sup>              |
| RT     | 132 = Standard<br>010 = 2,200 lb/<br>1 ton | B = Standard bronze<br>wheels for S*COR*E<br>features |   | G = Hand chain gear<br>driven                                   | 08 = 8 ft (standard<br>for hand chain)                 | D = Fits 3 ton<br>(6 - 12)<br>6 ton (N/A)           | A = 7790 plain, no<br>adapter                       |
|        |                                            |                                                       |   | 0 = Vane motor air<br>driven, no<br>pendent                     | XX = Specify length<br>in feet                         |                                                     | E = 7700 0.25-1 ton to<br>TIR6600 adapter           |
|        |                                            |                                                       |   | 2 = Vane motor air<br>driven, 1 motor<br>pendent <sup>(2)</sup> | 00 = No pendent or<br>hand chain or a<br>plain trolley |                                                     | J = HLK 1 and 1.5 ton<br>lug adapter <sup>(1)</sup> |
|        |                                            |                                                       |   | 3 = Vane motor air<br>driven, 2 motor<br>pendent <sup>(2)</sup> |                                                        |                                                     | K = HLK 2 and 3 ton<br>lug adapter <sup>(1)</sup>   |
|        |                                            |                                                       |   | 4 = Vane motor air<br>driven, 3 motor<br>pendent <sup>(2)</sup> |                                                        |                                                     | H = Hook adapter<br>(3 and ton TIR6600<br>only)     |
|        |                                            |                                                       |   |                                                                 |                                                        |                                                     | M = MLK to TIR6600<br>lug adapter<br>(TIR6600 only) |
|        |                                            |                                                       |   |                                                                 |                                                        |                                                     | R = 7700 0.25-1 ton to<br>RT adapter                |
|        |                                            |                                                       |   |                                                                 |                                                        |                                                     | T = RT rigid lug<br>adapter                         |

### NOTE:

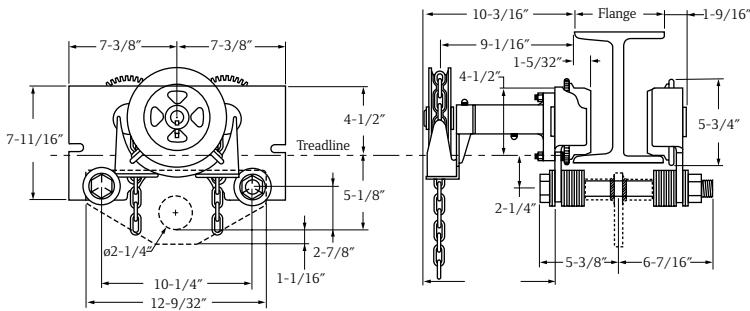
- (1) Required to install TIR6600 trolley on HLK1-3t hoist with top lug manufactured July 1995 or before, or to convert any hook mount to rigid trolley.
- (2) Standard pendants are full flow for the TIR trolley. Pilot and full flow for the second and third function. If control length exceeds 20 ft, quick exhaust valves are required. See table and associated pricing, as with the MTK tractor.

# TIR Series

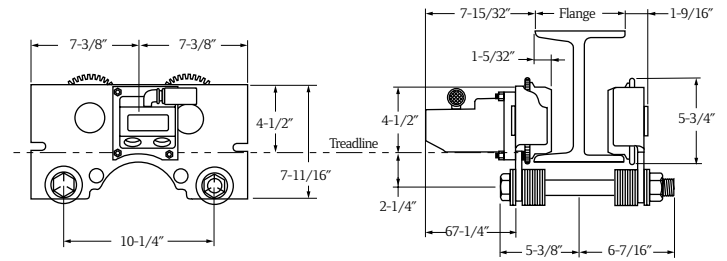
0.25 to 6 metric ton capacities

TIR6600, TIR132, and RT010 dimensions

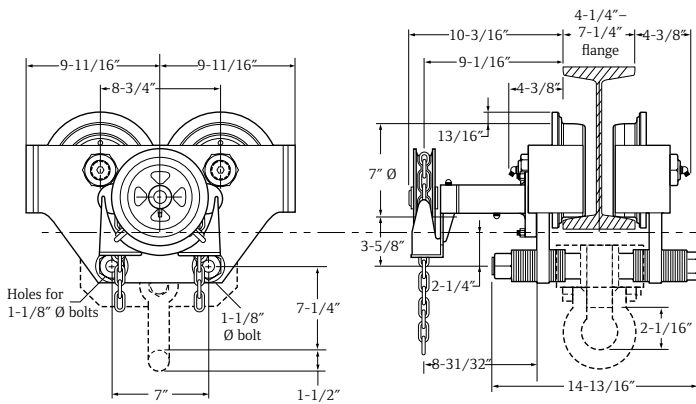
**TIR6600 plain, geared, and lug-mounted trolley**



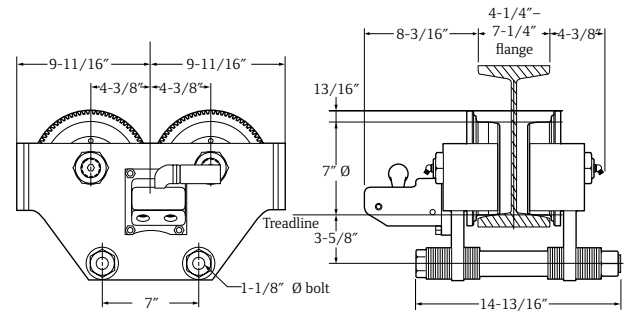
**TIR6600 motorized trolley**



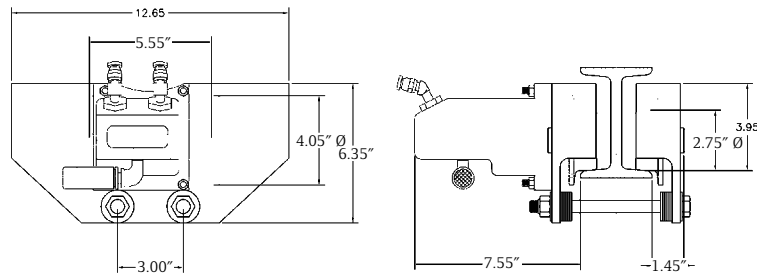
**TIR132 plain, geared, and hook-mounted trolley**



**TIR132 motorized trolley**



**RT010 motorized trolley**



Trolleys and Beam Clamps

# RT Series trolley

1 metric ton capacity

## Plain and rigid

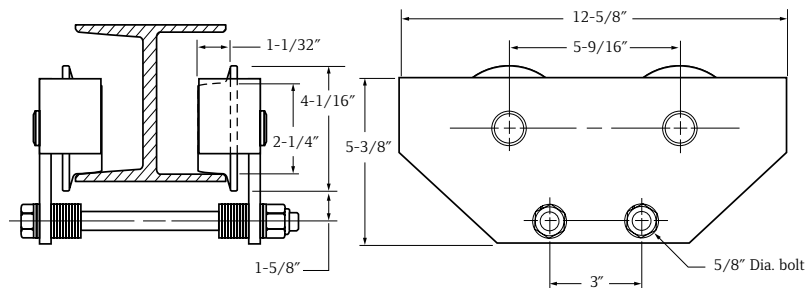
Cousin to the PT Series trolley, the twin suspension shaft RT Series trolley offers a rigid connection for the MLK, MLKS, and MLKR Series of air chain hoists. Like the PT Series, the RT Series uses universal tread wheels for use on flat or tapered flange beams.



### RT010 Series Trolley Specifications

| Trolley Part Number | Capacity metric tons | Fits Beam Flange Width in | Minimum Turning Radius in |
|---------------------|----------------------|---------------------------|---------------------------|
| RT010               | 0.25 - 1             | 2.7 - 6                   | 36                        |

Wheels have universal tread for use on flat or tapered beams.



# BC Series

1 to 10 metric ton capacities

## Beam clamp features

Ingersoll Rand beam clamps provide temporary or permanent mounting options for a wide range of tapered or flat beams. These units have been designed and verified — by actual pull testing — to achieve a minimum design factor of 5:1 for vertical lifting with a powered or manual hoist, which meets ASME B30.16.

These beam clamps offer quick and simple one-handed installation without requiring any tools. Units accommodate hook-mounted hoist or load blocks with minimal loss of headroom. The clamp jaws are designed to reduce beam stress by applying the load inside of the flange edge.

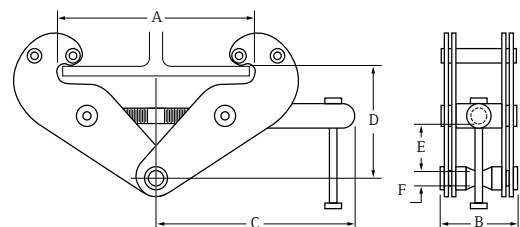
- Quick installation by hand and with no required tools
- Low headroom design adjusts to fit a wide range of flat or tapered beams
- Meets ASME B30.16 for use with powered or manual hoists
- Each unit is serialized and supplied with a test certificate and manual
- Metric rated for vertical lifting at 2,200 lb per ton



Trolleys and Beam Clamps

### BC Series Beam Clamp Specifications and Dimensions

| Model | Weight lb | Capacity metric tons | Beam Width |      |      |           |      |      |
|-------|-----------|----------------------|------------|------|------|-----------|------|------|
|       |           |                      | A in       | B in | C in | D in      | E in | F in |
| BC-1  | 9.9       | 1                    | 3 - 10.2   | 3.1  | 9.6  | 4 - 5.9   | 1.2  | 0.9  |
| BC-2  | 11        | 2                    | 3 - 10.2   | 3.5  | 9.6  | 4 - 5.9   | 1.2  | 0.9  |
| BC-3  | 23.1      | 3                    | 3.2 - 13.9 | 4.7  | 11.2 | 6 - 8.9   | 2    | 0.9  |
| BC-5  | 24.2      | 5                    | 3.2 - 13.9 | 4.9  | 11.2 | 6 - 8.9   | 1.9  | 1.1  |
| BC-10 | 35.2      | 10                   | 3.5 - 14.4 | 5.7  | 11.3 | 6.9 - 9.3 | 2.2  | 1.6  |





# MTK Series

6 metric ton towing capacity

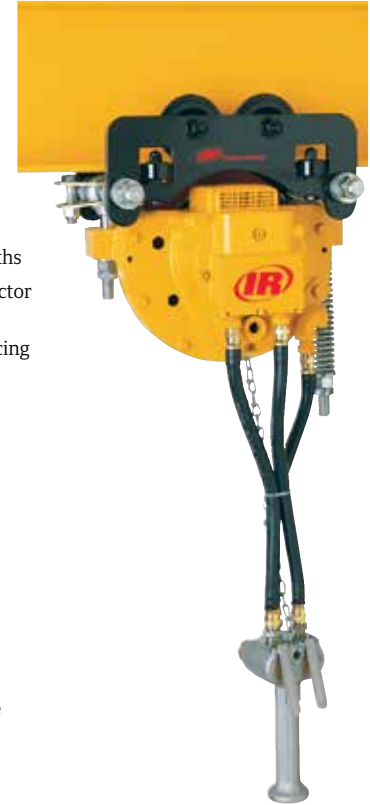
## Features

**MTK Series tractors require less air, making them less expensive to operate. They're designed for use with any hoist, or even alone to push, pull, or position loads on beams.**

- Up to 6 metric ton towing capacity
- Interchangeability with MLK Series and HLK Series parts
- Balanced gear package and air motor provide speeds from slow creep to 165 fpm
- Million-cycle performance tested air motor with spring-loaded vanes provides instant starting and slow speed control
- Heat-treated planetary gearing assures longer life and reduced maintenance
- Self-adjusting, spring-applied, non-asbestos disc brake is air-released for smooth starts and stops
- Drive tire is made from extremely durable polyurethane material with a temperature rating of 185° F for excellent adjustable gripping characteristics
- Tight turning radius of 30"
- Universal solid cast-iron wheels fit both flat and tapered beams
- Wheels can be greased for longer life
- Standard tractor fits 2.7" – 6.3" beam flange widths
- Roller guides made from high alloy steel keep tractor running smoothly
- Tractor operates with a full-flow pendent, enhancing load-spotting control
- Standard 7' pendent length
- Tow bar included with tractor

## Options

- Free wheel kit that permits moving of tractor without supplying air; attaches directly to tractor without modification
- Wide flange kit fits 6.27 – 12" beam flange widths
- Pull chain operation
- Bronze wheels for spark-resistant applications
- Gasket repair and manual brake release kits
- Drawbar hitch kit
- External brake release kit relieves auto disc brake without running tractor

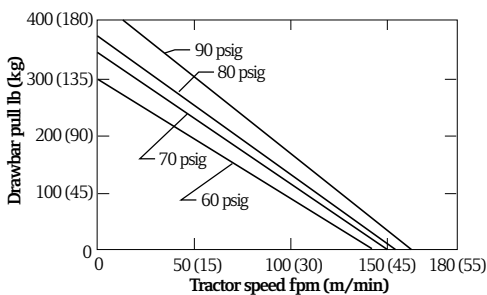


## MTK Series Tractor Specifications\*

| Drawbar Pull<br>lb | Capacity                      |                                    | Max<br>Speed<br>fpm | Pendent<br>Length<br>ft | Turning<br>Radius<br>in | Beam Flange Width |                |
|--------------------|-------------------------------|------------------------------------|---------------------|-------------------------|-------------------------|-------------------|----------------|
|                    | Flat, Dry Good<br>metric tons | Curved, Slick, Poor<br>metric tons |                     |                         |                         | Standard<br>in    | Optional<br>in |
| 0                  | 0                             | 0                                  | 165                 | 7                       | 30                      | 2.7 - 6.3         | 6.3 - 12       |
| 100                | 1.50                          | 0.75                               | 117                 | 7                       | 30                      | 2.7 - 6.3         | 6.3 - 12       |
| 200                | 3                             | 1.50                               | 86                  | 7                       | 30                      | 2.7 - 6.3         | 6.3 - 12       |
| 300                | 4.25                          | 2.25                               | 57                  | 7                       | 30                      | 2.7 - 6.3         | 6.3 - 12       |
| 400                | 6                             | 3                                  | 21                  | 7                       | 30                      | 2.7 - 6.3         | 6.3 - 12       |

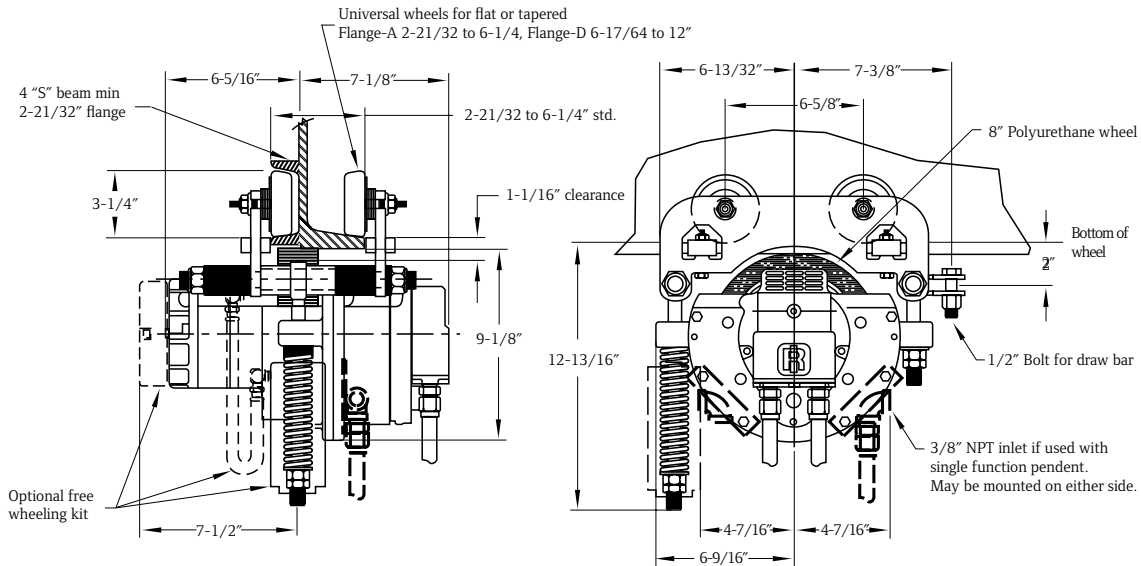
\*At 90 psi inlet pressure. Average air consumption is 35 scfm; range is 25 to 45 scfm, depending on load and air pressure.

## Draw Bar Load vs. Tractor Speed



# MTK Series

6 metric ton towing capacity



► HOW TO ORDER

Specify complete model number as shown. This model code includes: Series, Standard or S\*COR\*E, type of Trolley, length of chain or pendent drop, flange width, and options Some accessories may be ordered by specifying them as an option code or by ordering separately by part number. See the Accessories and Options charts above.

Example: MTKS-307AM

| MTK    | S                                                                                | 3                                                                                                                                                             | 07                                                                                        | A                                             | M                                                                                                      |
|--------|----------------------------------------------------------------------------------|---------------------------------------------------------------------------------------------------------------------------------------------------------------|-------------------------------------------------------------------------------------------|-----------------------------------------------|--------------------------------------------------------------------------------------------------------|
| Series | Standard or S*COR*E                                                              | Type of control/trolley                                                                                                                                       | Chain or pendent length                                                                   | Flange width (in)                             | Options                                                                                                |
| MTK    | S = Standard cast iron wheels<br>B = Standard bronze wheels for S*COR*E features | 0 = No pendent <sup>(1)</sup><br>1 = Pull chain<br>2 = Single motor pendent <sup>(1)</sup><br>3 = Two motor pendent <sup>(2)</sup><br>4 = Three motor pendent | 07 = 7 ft (standard)<br>XX = Specify length in feet<br>00 = No pendent hose or pull chain | A = Fits 2.66 - 6.25<br>D = Fits 6.26 - 12.00 | E = External brake release kit<br>F = Free wheel<br>M = Manual brake release<br>P = Piped away exhaust |

(1) Specify when used in combination with hoist on the same order. Specify multiple pendent control function on the hoist only.

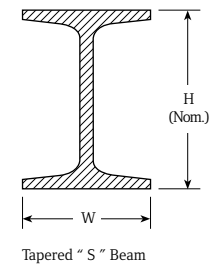
(2) Do not specify if tractor is ordered with a hoist.

# I-beam specifications

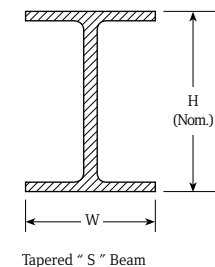
The following table shows the standard size (H), flange widths (W), and weights for both American, Standard I-beams, and Wide Flange H-beams. I-beams designated with an asterisk (\*) denote New Series applications which conform to ASTM A6 standards, effective September 1, 1978.

| Wide Flange |         |                     |         |         |                     | American Standard |         |                     |         |         |                     |
|-------------|---------|---------------------|---------|---------|---------------------|-------------------|---------|---------------------|---------|---------|---------------------|
| H<br>in     | W<br>in | Weight per ft<br>lb | H<br>in | W<br>in | Weight per ft<br>lb | H<br>in           | W<br>in | Weight per ft<br>lb | H<br>in | W<br>in | Weight per ft<br>lb |
| 6           | 3.94    | 8.5                 | 10      | 10.117  | 66.0                | 16*               | 6.985   | 36                  | 4       | 2.663   | 7.7                 |
| 6*          | 4.0     | 9.0                 | 10*     | 10.130  | 68.0                | 16                | 7.0     | 40                  | 4       | 2.796   | 9.5                 |
| 6           | 4.0     | 12.0                | 10      | 10.170  | 72.0                | 16*               | 6.995   | 40                  | 5       | 3.004   | 10.0                |
| 6*          | 4.0     | 12.0                | 10      | 10.190  | 77.0                | 16                | 7.039   | 45                  | 5       | 3.284   | 14.75               |
| 6           | 4.030   | 16.0                | 10*     | 10.190  | 77.0                | 16*               | 7.035   | 45                  | 6       | 3.332   | 12.5                |
| 6*          | 4.030   | 16.0                | 10*     | 10.625  | 88.0                | 16                | 7.073   | 50                  | 6       | 3.565   | 17.25               |
| 6*          | 5.990   | 15.0                | 10      | 10.275  | 89.0                | 16*               | 7.07    | 50                  | 7       | 3.662   | 15.3                |
| 6           | 5.995   | 15.5                | 10      | 10.340  | 100.0               | 16*               | 7.12    | 57                  | 7       | 3.860   | 20.0                |
| 6           | 6.020   | 20.0                | 10*     | 10.340  | 100.0               | 16                | 8.464   | 58                  | 8       | 4.001   | 18.4                |
| 6           | 6.018   | 20.0                | 10      | 10.415  | 112.0               | 16*               | 10.235  | 67                  | 8       | 4.171   | 23.0                |
| 6           | 6.080   | 25.0                | 10*     | 10.415  | 112.0               | 16*               | 10.295  | 77                  | 10      | 4.661   | 25.4                |
| 6*          | 6.080   | 25.0                | 12      | 3.968   | 14.0                | 16*               | 10.365  | 89                  | 10      | 4.944   | 35.0                |
| 8           | 3.940   | 10.0                | 12*     | 3.970   | 14.0                | 16*               | 10.425  | 100                 | 12      | 5.0     | 31.8                |
| 8*          | 3.940   | 10.0                | 12*     | 3.990   | 16.0                | 16                | 11.502  | 88                  | 12      | 5.078   | 35.0                |
| 8           | 4.0     | 13.0                | 12      | 4.0     | 16.5                | 16                | 11.5    | 96                  | 12      | 5.252   | 40.8                |
| 8*          | 4.0     | 13.0                | 12      | 4.005   | 19.0                | 18                | 6.0     | 35                  | 12      | 5.477   | 50.0                |
| 8           | 4.015   | 15.0                | 12*     | 4.007   | 19.0                | 18*               | 6.0     | 35                  | 15      | 5.501   | 42.9                |
| 8*          | 4.015   | 15.0                | 12      | 4.030   | 22.0                | 18                | 6.015   | 40                  | 15      | 5.640   | 50.0                |
| 8           | 5.250   | 17.0                | 12*     | 4.030   | 22.0                | 18*               | 6.015   | 40                  | 18      | 6.001   | 54.7                |
| 8*          | 5.250   | 18.0                | 12*     | 6.490   | 26.0                | 18*               | 6.060   | 46                  | 18      | 6.251   | 70.0                |
| 8           | 5.268   | 20.0                | 12      | 6.497   | 27.0                | 18                | 7.477   | 45                  | 20      | 6.25    | 65.4                |
| 8*          | 5.270   | 21.0                | 12*     | 6.520   | 30.0                | 18                | 7.5     | 50                  | 20      | 6.385   | 75.0                |
| 8           | 6.495   | 24.0                | 12      | 6.525   | 31.0                | 18*               | 7.5     | 50                  | 20      | 7.060   | 86.0                |
| 8*          | 6.5     | 24.0                | 12*     | 6.560   | 35.0                | 18                | 7.532   | 55                  | 20      | 7.200   | 96.0                |
| 8           | 6.535   | 28.0                | 12      | 6.565   | 36.0                | 18*               | 7.530   | 55                  | 24      | 7.001   | 79.9                |
| 8*          | 6.535   | 28.0                | 12      | 8.0     | 40.0                | 18                | 7.558   | 60                  | 24      | 7.125   | 90.0                |
| 8           | 7.995   | 31.0                | 12*     | 8.005   | 40.0                | 18*               | 7.555   | 60                  | 24      | 7.245   | 100.0               |
| 8*          | 7.995   | 31.0                | 12      | 8.042   | 45.0                | 18*               | 7.635   | 71                  | 24      | 7.875   | 105.9               |
| 8           | 8.020   | 35.0                | 12*     | 8.045   | 45.0                | 18                | 8.715   | 64                  | 24      | 8.050   | 121.0               |
| 8*          | 8.020   | 35.0                | 12      | 8.077   | 50.0                | 18                | 8.75    | 70                  |         |         |                     |
| 8           | 8.070   | 40.0                | 12*     | 8.080   | 50.0                | 18                | 8.787   | 77                  |         |         |                     |
| 8*          | 8.070   | 40.0                | 12      | 10.0    | 53.0                | 18*               | 11.035  | 76                  |         |         |                     |
| 8           | 8.110   | 48.0                | 12*     | 9.995   | 53.0                | 18*               | 11.090  | 86                  |         |         |                     |
| 8*          | 8.110   | 48.0                | 12      | 10.014  | 58.0                | 18*               | 11.145  | 97                  |         |         |                     |
| 8           | 8.220   | 58.0                | 12*     | 10.010  | 58.0                | 18*               | 11.200  | 106                 |         |         |                     |
| 8*          | 8.220   | 58.0                | 14      | 5.0     | 22.0                | 18*               | 11.265  | 119                 |         |         |                     |
| 8           | 8.280   | 67.0                | 14*     | 5.0     | 22.0                | 18                | 11.75   | 96                  |         |         |                     |
| 8           | 8.280   | 67.0                | 14      | 5.025   | 26.0                | 21                | 6.5     | 44                  |         |         |                     |
| 10          | 3.950   | 11.5                | 14*     | 5.025   | 26.0                | 21*               | 6.5     | 44                  |         |         |                     |
| 10*         | 3.960   | 12.0                | 14      | 6.730   | 30.0                | 21*               | 6.530   | 50                  |         |         |                     |
| 10          | 4.0     | 15.0                | 14*     | 6.730   | 30.0                | 21*               | 6.555   | 57                  |         |         |                     |
| 10*         | 4.0     | 15.0                | 14      | 6.75    | 34.0                | 21                | 8.215   | 55                  |         |         |                     |
| 10          | 4.010   | 17.0                | 14*     | 6.745   | 34.0                | 21                | 8.240   | 62                  |         |         |                     |
| 10*         | 4.010   | 17.0                | 14      | 6.770   | 38.0                | 21*               | 8.240   | 62                  |         |         |                     |
| 10          | 4.020   | 19.0                | 14*     | 6.770   | 38.0                | 21                | 8.270   | 68                  |         |         |                     |
| 10*         | 4.020   | 19.0                | 14      | 8.0     | 43.0                | 21*               | 8.270   | 68                  |         |         |                     |
| 10          | 5.75    | 21.0                | 14*     | 7.995   | 43.0                | 21                | 8.295   | 73                  |         |         |                     |
| 10*         | 5.75    | 22.0                | 14      | 8.031   | 48.0                | 21                | 8.295   | 73                  |         |         |                     |
| 10          | 5.762   | 25.0                | 14*     | 8.030   | 48.0                | 21*               | 8.355   | 83                  |         |         |                     |
| 10*         | 5.770   | 26.0                | 14      | 8.062   | 53.0                | 21*               | 8.420   | 93                  |         |         |                     |
| 10          | 5.799   | 29.0                | 14*     | 8.060   | 53.0                | 21                | 8.962   | 82                  |         |         |                     |
| 10*         | 5.810   | 30.0                | 14      | 10.0    | 61.0                | 24                | 7.005   | 55                  |         |         |                     |
| 10          | 7.960   | 33.0                | 14*     | 9.995   | 61.0                | 24*               | 7.005   | 55                  |         |         |                     |
| 10*         | 7.960   | 33.0                | 14      | 10.035  | 68.0                | 24*               | 7.040   | 62                  |         |         |                     |
| 10          | 7.985   | 39.0                | 14      | 10.035  | 68.0                | 24                | 8.961   | 68                  |         |         |                     |
| 10*         | 7.985   | 39.0                | 14      | 10.072  | 74.0                | 24*               | 8.965   | 68                  |         |         |                     |
| 10          | 8.020   | 45.0                | 14*     | 10.070  | 74.0                | 24                | 8.965   | 76                  |         |         |                     |
| 10*         | 8.020   | 45.0                | 14      | 12.0    | 78.0                | 24*               | 8.990   | 76                  |         |         |                     |
| 10          | 10.0    | 49.0                | 14      | 14.5    | 87.0                | 24                | 9.015   | 84                  |         |         |                     |
| 10*         | 10.0    | 49.0                | 14*     | 10.130  | 82.0                | 24*               | 9.020   | 84                  |         |         |                     |
| 10          | 10.030  | 54.0                | 16      | 5.5     | 26.0                | 24                | 9.065   | 94                  |         |         |                     |
| 10*         | 10.030  | 54.0                | 16      | 5.525   | 31.0                | 24*               | 9.065   | 94                  |         |         |                     |
| 10          | 10.080  | 60.0                | 16*     | 5.625   | 31.0                | -                 | -       | -                   |         |         |                     |
| 10*         | 10.080  | 60.0                | 16      | 6.692   | 36.0                | -                 | -       | -                   |         |         |                     |

American Standard



Wide Flange



Trolleys and Beam Clamps

# Lubricants

These approved lubricants are suggested for either routine preventive maintenance procedures or for total hoist overhaul.

| Part No.         | Amount               | Product Description                                                                                                                                      | Where Used                                                                |
|------------------|----------------------|----------------------------------------------------------------------------------------------------------------------------------------------------------|---------------------------------------------------------------------------|
| 29665            | 1 qt (0.9 L)         | Detergent-free spindle oil with viscosity of 155-165 S.U.S. at 100°F and aniline point of 217°F.                                                         | In airline lubricator to provide lubrication to hoist air motor.          |
| 33153            | 5 lb (2.3 kg)        | EP (extreme pressure) bearing and gear grease, NLGI No. 1 with viscosity of 750 S.U.S. at 100°F.                                                         | Pocket wheel, sheave block                                                |
| 50P              | 1 pt (0.5 L)         | Class II lubricant, #50                                                                                                                                  | Hoist and winches                                                         |
| 40164            | 1 qt (0.9 L)         | Gear oil                                                                                                                                                 | Hoist gearing                                                             |
| 50G              | 1 gal (3.8 L)        | Class II lubricant, #50                                                                                                                                  | Hoist and winches                                                         |
| 62 1 Gal         | 1 gal (3.8 L)        | Class II #62 oil                                                                                                                                         | Hoist and winch gear boxes                                                |
| 36460            | 4 oz (118 ml)        | Stringy lubricant for rubber seals<br>Triple protection, USDA approved lubricant<br>Extreme pressure formula and corrosion inhibitors, penetrating oils. | "O" rings<br>Load chain or wherever penetrating lubricating oils are used |
| Lubri-Link Green | 16 oz spray bottle   | Stringy lubricant for rubber seals<br>Triple protection, USDA approved lubricant<br>Extreme pressure formula and corrosion inhibitors, penetrating oils. | "O" rings<br>Load chain or wherever penetrating lubricating oils are used |
| LLG-5            | 5 gal bulk container | Stringy lubricant for rubber seals<br>Triple protection, USDA approved lubricant<br>Extreme pressure formula and corrosion inhibitors, penetrating oils. | "O" rings<br>Load chain or wherever penetrating lubricating oils are used |



29665



33153



40164



36460



Lubri-Link Green

## Filters - Regulators - Lubricators

| Part No.                                            | Size (in)<br>NPTF | Flow Rate<br>scfm | Adj. Pressure<br>Range psig | Bowl<br>Capacity | Height x Width<br>(in) |
|-----------------------------------------------------|-------------------|-------------------|-----------------------------|------------------|------------------------|
| <b>TRIO UNITS: FILTERS, REGULATORS, LUBRICATORS</b> |                   |                   |                             |                  |                        |
| C38341-810                                          | 1/2               | 150               | 5-250                       | 4 oz             | 6 x 8.7                |
| C38451-810                                          | 3/4               | 200               | 5-250                       | 4 oz             | 8.6 x 11.1             |
| C38461-810                                          | 1                 | 215               | 5-250                       | 4 oz             | 8.6 x 11.1             |
| <b>COMPONENTS</b>                                   |                   |                   |                             |                  |                        |
| Part No.                                            |                   | FILTER            | REGULATOR                   | LUBRICATOR       |                        |
| TRIO #                                              |                   |                   |                             |                  |                        |
| C38341-810                                          | 1/2               | F35341-410        | R37341-600                  | L36341-110       |                        |
| C38451-810                                          | 3/4               | F35451-410        | R37451-600                  | L36451-110       |                        |
| C38461-810                                          | 1                 | F35461-410        | R37461-600                  | L36461-110       |                        |



C38451-810



C38341-810



Ingersoll Rand (NYSE:IR) advances the quality of life by creating and sustaining safe, comfortable and efficient environments. Our people and our family of brands—including Club Car®, Ingersoll Rand®, Schlage®, Thermo King® and Trane® —work together to enhance the quality and comfort of air in homes and buildings; transport and protect food and perishables; secure homes and commercial properties; and increase industrial productivity and efficiency. Ingersoll Rand products range from complete compressed air systems, tools and pumps to material handling systems. The diverse and innovative products, services and solutions enhance our customers' energy efficiency, productivity and operations. We are a \$14 billion global business committed to a world of sustainable progress and enduring results. For more information, visit [ingersollrand.com](http://ingersollrand.com).



[www.ingersollrandproducts.com](http://www.ingersollrandproducts.com)

Distributed by:

Ingersoll Rand, IR and the IR logo are trademarks of Ingersoll Rand, its subsidiaries and/or affiliates. All other trademarks are the property of their respective owners.

**WARNING:** This equipment is not designed for transporting people or lifting loads above people. It is the user's responsibility to determine the suitability of this product for any particular use and to check compliance with applicable regulations. Before installation, see maintenance and operations manual for additional warnings and precautions.

Nothing contained on these pages is intended to extend any warranty or representation, expressed or implied, regarding the product described herein. Any such warranties or other terms and conditions of sale of products shall be in accordance with Ingersoll Rand's standard terms and conditions of sale for such products, which are available upon request.

Product improvement is a continuing goal at Ingersoll Rand. Designs and specifications are subject to change without notice or obligation.