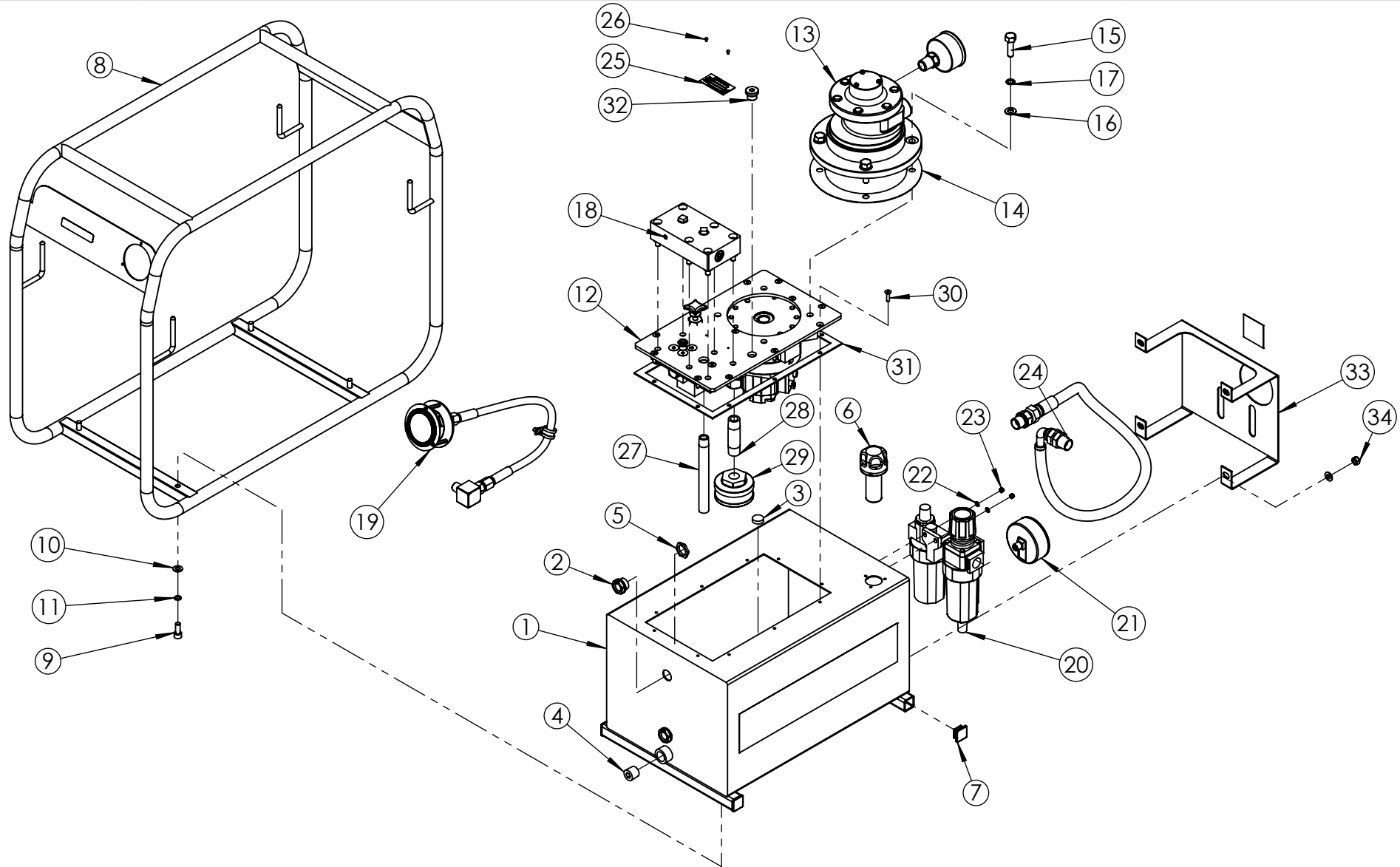


| | |
|----|------|
| 1 | |
| 2 | 6145 |
| 3 | |
| 4 | |
| 5 | |
| 6 | |
| 7 | |
| 8 | |
| 9 | |
| 10 | |
| 11 | |
| 12 | |
| 13 | |
| 14 | |
| 15 | |
| 16 | |
| 17 | |
| 18 | |
| 19 | |
| 20 | |



IMPORTANT

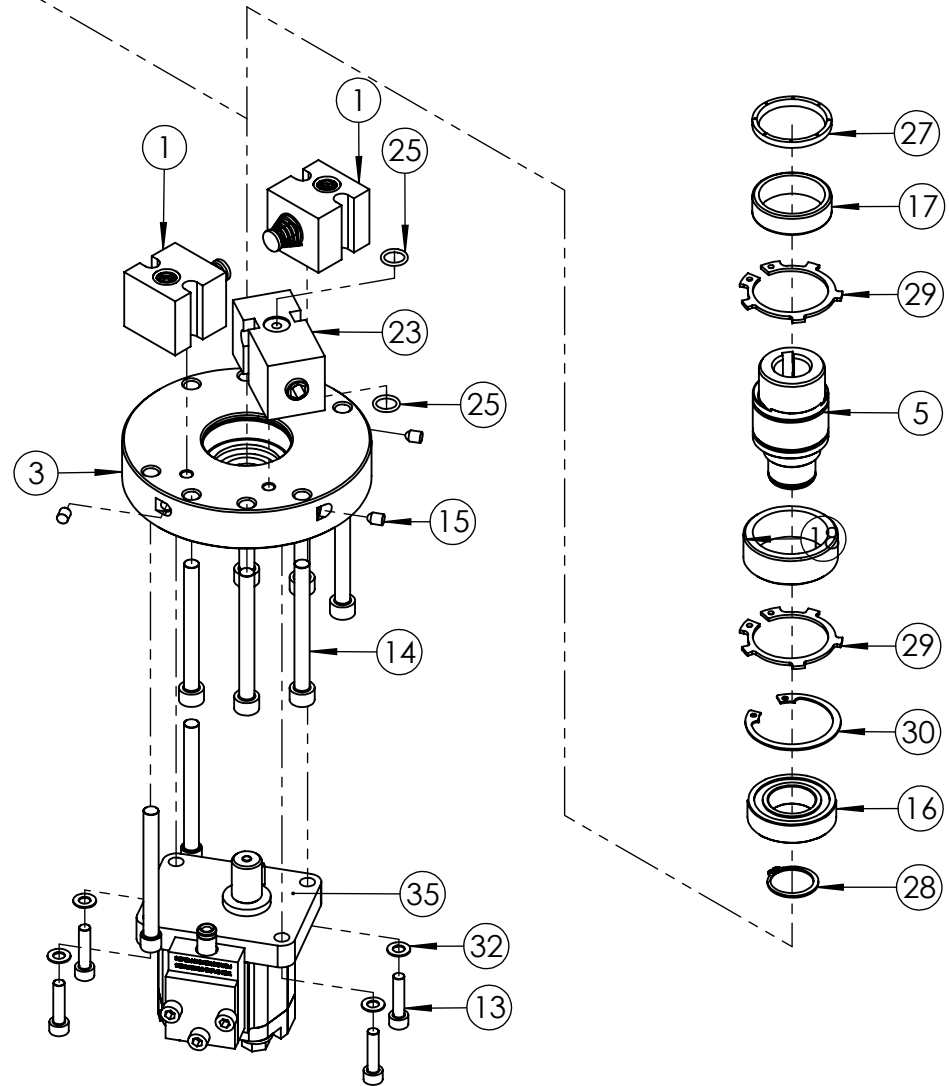
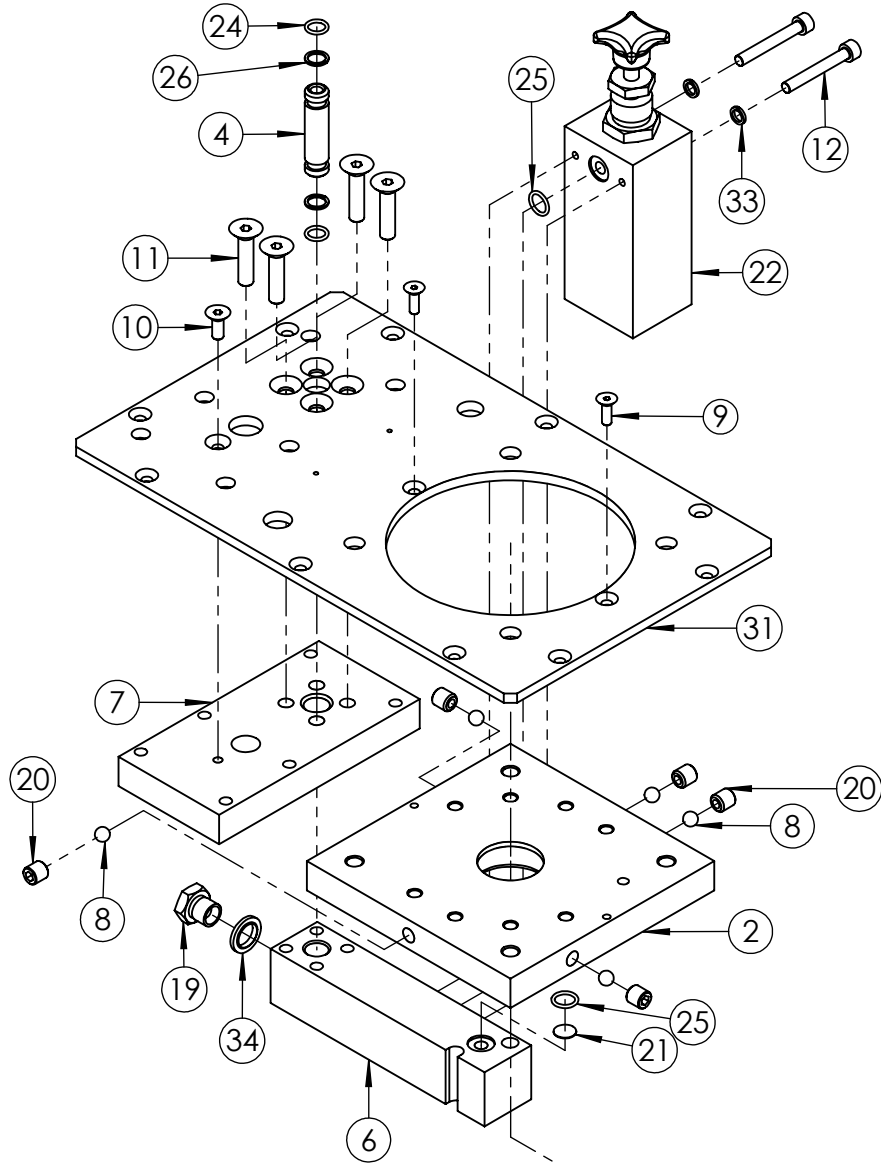
WHEN ORDERING SPARES YOU MUST STATE THE FULL PART NUMBER AND THE
PRODUCT SERIAL NUMBER - FROM THE LABEL
TO PROTECT YOUR WARRANTY ALWAYS USE GENUINE HI-FORCE PARTS.

| AIR DRIVEN, TWO STAGE PUMP | | | | | | SERIAL NUMBERS | | | PRODUCT NO. | | | SHT 2 OF 2 SHTS |
|----------------------------|-------------|--|------|-------------|---------------|--|-------------|---|-------------|-------------|---------------|-----------------|
| | | | | | | FROM BP7151 | | | HAP21012 | | | |
| ITEM NO. | PART NUMBER | DESCRIPTION | QTY. | SPARE PARTS | SERVICE PARTS | ITEM NO. | PART NUMBER | DESCRIPTION | QTY. | SPARE PARTS | SERVICE PARTS | REVISION |
| 1 | TAC025AS006 | 25L TANK | 1 | | | 23 | NUC004VC000 | NUT | 2 | | | 1 |
| 2 | BLC021YT010 | SIGHT GLASS HGF.13 BLACK OIL LEVEL INDICATOR | 2 | | | 24 | HOC012AB001 | 1/2" BORE RED PVC HOSE 750mm LONG | 1 | | | 2 6145 |
| 3 | DCSF00328 | DOUBLE SIDED MAGNET | 1 | | | 25 | AAN000UP001 | 60 x 30 mm UNIVERSAL NAME PLATE | 1 | ✖ | | 3 |
| 4 | FPC013PC001 | 1/2" BSP PLUG - HEX SOCKET | 1 | | | 26 | FAS002HZ001 | NO.4 x 3/16 HAMMER DRIVE SCREW | 2 | | | 4 |
| 5 | NUC021-B000 | 1/2" BSP LOCK NUT | 2 | | | 27 | TAC000PA001 | 160 mm LONG SUCTION PIPE | 1 | | | 5 |
| 6 | FFC028PZ001 | FILLER/BREATHER | 1 | | | 28 | FPC013AC010 | 1/2" BSPT SUCTION PIPE | 1 | | | 6 |
| 7 | BPC025KP001 | 1" SQ RIBBED INSERT BLACK | 4 | | | 29 | FFC045MZ001 | FILTER | 1 | | | 7 |
| 8 | TAC025CS003 | 25L ROLL FRAME | 1 | | | 30 | BLC005HF020 | M5 x 20 mm HEX SOCKET COUNTERSUNK SCREW | 10 | | | 8 |
| 9 | BLC008KD020 | M8 x 20 mm HEX SOCKET CAP HEAD SCREW | 4 | | | 31 | 15482 | TANK GASKET | 1 | ✖ | ✓ | 9 |
| 10 | WAC008AB000 | M8 PLAIN WASHER | 8 | | | 32 | FPC010PB001 | 3/8" BSP BLANKING PLUG | 1 | | | 10 |
| 11 | WAC008BB000 | M8 ZINC PLATED SPRING WASHER | 4 | | | 33 | TAC000FS005 | FRL HOUSING | 1 | | | 11 |
| 12 | TYPE200-19 | 200 SERIES PUMP UNIT | 1 | | | 34 | NUC008KC000 | M8 NYLOC NUT | 4 | | | 12 |
| 13 | AM1 | AIR MOTOR | 1 | | | <p>NOTE:</p> <p>- ALL PARTS ARE AVAILABLE TO BE ORDERED AS INDIVIDUAL SPARE PARTS (UNLESS MARKED WITH ✖).</p> <p>- ALL PARTS MARKED WITH ✓ ARE AVAILABLE SERVICEABLE PARTS FOUND IN: SERVICE KIT HEP-SK1</p> <p>- FOR SUB ASSEMBLIES (ITEM NO.S 12 & 19) PLEASE REFER TO THEIR INDIVIDUAL EVD's.</p> | | | | | | 13 |
| 14 | SEC001KT003 | GASKET | 1 | ✖ | ✓ | | | | | | | 14 |
| 15 | BLC010LB035 | M10 x 35 mm HEX HEAD BOLT, ZINC PLATED | 4 | | | | | | | | | 15 |
| 16 | WAC010AB000 | M10 ZINC PLATED FLAT WASHER | 4 | | | | | | | | | 16 |
| 17 | WAC010BZ000 | M10 SPRING WASHER | 4 | | | | | | | | | 17 |
| 18 | PM1 | PORT PLATE (15777) | 1 | | | | | | | | | 18 |
| 19 | PGP063AK001 | HEP & HAP PRESSURE GAUGE ASSEMBLY | 1 | | | | | | | | | 19 |
| 20 | MCC000AF002 | FILTER/LUBRICATOR | 1 | | | | | | | | | 20 |
| 21 | FRL-G160L | AIR PRESSURE GAUGE DIA 80mm | 1 | | | | | | | | | |
| 22 | WAC004YB000 | M4 WASHER ST | 2 | | | | | | | | | |

IMPORTANT
WHEN ORDERING SPARES YOU MUST STATE THE FULL PART NUMBER AND THE PRODUCT SERIAL NUMBER - FROM THE LABEL
TO PROTECT YOUR WARRANTY ALWAYS USE GENUINE HI-FORCE PARTS.

REVISION

| | |
|----|------|
| 1 | 5717 |
| 2 | 5866 |
| 3 | 5939 |
| 4 | |
| 5 | |
| 6 | |
| 7 | |
| 8 | |
| 9 | |
| 10 | |
| 11 | |
| 12 | |
| 13 | |
| 14 | |
| 15 | |
| 16 | |
| 17 | |
| 18 | |
| 19 | |
| 20 | |



IMPORTANT

WHEN ORDERING SPARES YOU MUST STATE THE FULL PART NUMBER AND THE PRODUCT SERIAL NUMBER - FROM THE LABEL TO PROTECT YOUR WARRANTY ALWAYS USE GENUINE HI-FORCE PARTS.

| 200 SERIES PUMP UNIT | | | | | | SERIAL NUMBERS | | PRODUCT NO. TYPE200-19 | | | SHT 2 OF 2 SHTS | |
|----------------------|----------------|--|------|-------------|---------------|----------------|--------------------|--|------|-------------|--------------------|----------|
| ITEM NO. | PART NUMBER | DESCRIPTION | QTY. | SPARE PARTS | SERVICE PARTS | ITEM NO. | PART NUMBER | DESCRIPTION | QTY. | SPARE PARTS | SERVICE PARTS | REVISION |
| 1 | 15494-A | PISTON BLOCK ASSEMBLY | 2 | | | 26 | SEC013BA001 | BACK-UP RING - PTFE, SOLID SPLIT | 2 | | ✓ | 1 5717 |
| 2 | 15497 | UPPER PLATE | 1 | | | 27 | SEC035WE001 | UPPER PLATE OIL SEAL | 1 | | | 2 5866 |
| 3 | 15499 | LOWER PLATE | 1 | | | 28 | STC025AA001 | EXTERNAL CIRCLIP - 25 x 1.2 mm D1400/025 | 1 | | | 3 5939 |
| 4 | 15503 | CONNECTOR PIPE | 1 | | | 29 | STC040AA001 | EXTERNAL CIRCLIP - 40 x 1.75 mm D2100/0400 | 2 | | | 4 |
| 5 | 15498 | DRIVE SHAFT | 1 | | | 30 | STC047BA001 | INTERNAL CIRCLIP - 47 x 1.75 mm D1300/0470 | 1 | | | 5 |
| 6 | 17587 | TRANSFER BLOCK | 1 | | | 31 | TAC000BA003 | COVER PLATE | 1 | | | 6 |
| 7 | 17588 | VALVE PLATE | 1 | | | 32 | WAC006AF000 | M6 ZINC WASHER | 4 | | | 7 |
| 8 | BAC008SN000 | Ø8 mm STEEL BALL GRADE 100 | 5 | | | 33 | WAC006BC001 | M6 SPRING ZINC WASHER (SQUARE SECTION) | 2 | | | 8 |
| 9 | BLC005HF016 | M5 x 16 mm HEX SOCKET COUNTERSUNK SCREW | 2 | | | 34 | WAC007HD000 | 1/4" BSP SELF CENTERING BONDED WASHER | 1 | | | 9 |
| 10 | BLC006JE016 | M6 x 16 mm HEX SOCKET COUNTERSUNK SCREW | 1 | | | 35 | PMA048GZ001 | GP48 GEAR PUMP ASSEMBLY | 1 | | | 10 |
| 11 | BLC008KF035 | M8 x 35 mm HEX SOCKET COUNTERSUNK SCREW | 4 | | | | | | | | | 11 |
| 12 | BLC006JC045 | M6 x 45 mm HEX SOCKET CAP HEAD SCREW | 2 | | | | | | | | | 12 |
| 13 | BLC006JD025 | M6 x 25 mm HEX SOCKET CAP HEAD SCREW | 4 | | | | | | | | | 13 |
| 14 | BLC008KC080 | M8 x 80 mm HEX SOCKET CAP HEAD SCREW | 6 | | | | | | | | | 14 |
| 15 | BPC006RS001 | SEALING PLUG | 3 | | | | | | | | | 15 |
| 16 | BSC025MC001 | LOWER PLATE BEARING | 1 | | | | | | | | | 16 |
| 17 | BSC035NC001 | UPPER PLATE BEARING | 1 | | | | | | | | | 17 |
| 18 | BSC040ND001 | ECCENTRIC BEARING | 1 | | | | | | | | | 18 |
| 19 | FAS006GJ010 | 1/4" BSP HEX HEAD BLANKING PLUG | 1 | | | | | | | | | 19 |
| 20 | FAS010MA010 | M10 X 10 CUP POINT GRUB SCREW | 5 | | | | | | | | | 20 |
| 21 | FFC012MA001 | SUCTION FILTER | 1 | | | | | | | | | |
| 22 | HPRV1 | HIGH PRESSURE R/VALVE | 1 | | | | | | | | | |
| 23 | LPRV1 | LOW PRESSURE R/VALVE | 1 | | | | | | | | | |
| 24 | SEC013RA001 | O-RING - I.D. 9.25mm, C.S. 1.78mm, NITRILE 90 | 2 | | ✓ | | | | | | | |
| 25 | SEC014RF001 | O-RING - I.D. 10.82 mm, C.S. 1.78 mm, NITRILE 90 | 4 | | ✓ | | | | | | | |

NOTE:

- ALL PARTS ARE AVAILABLE TO BE ORDERED AS SPARE PARTS (UNLESS MARKED WITH X).

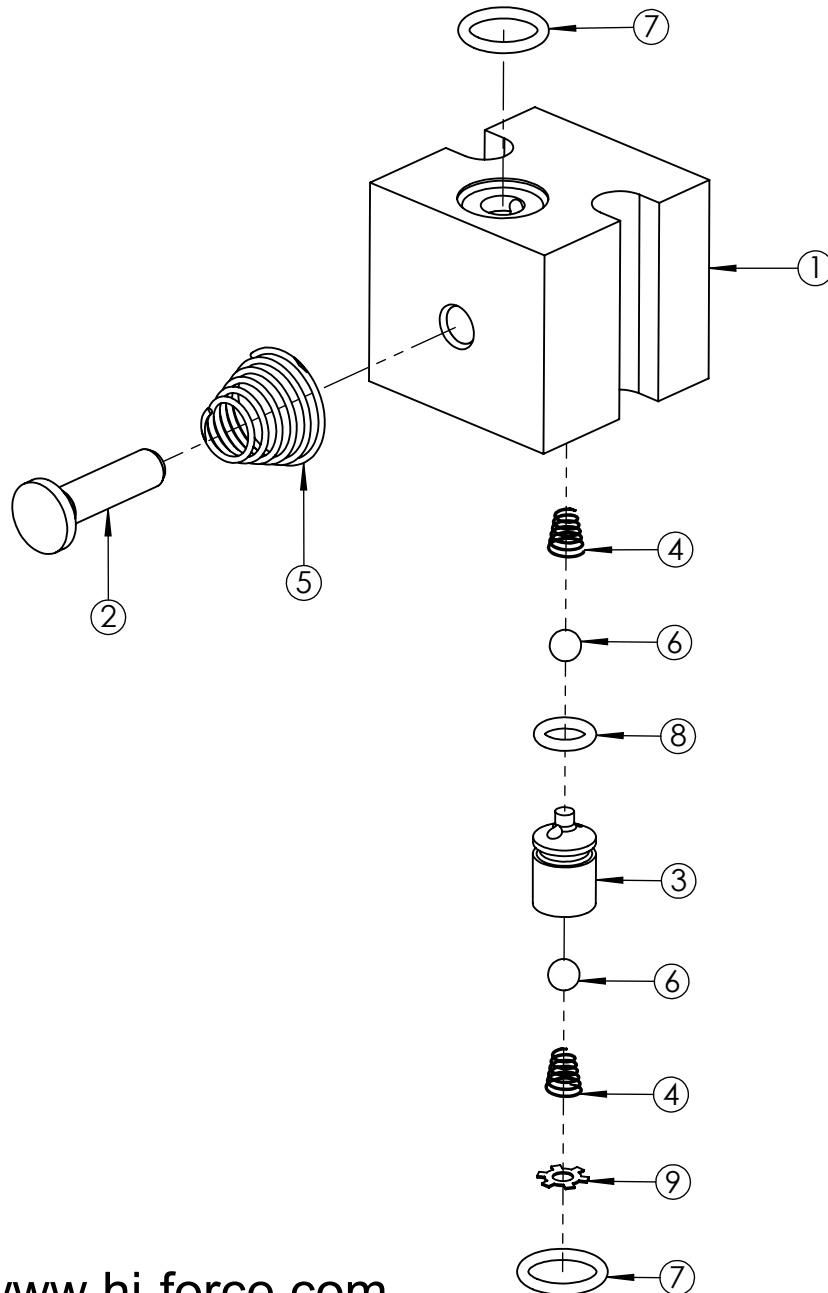
- ONLY PARTS MARKED WITH ✓ ARE AVAILABLE AS BOTH SPARE PARTS OR SERVICEABLE PARTS. FROM **HEP-SK1 PUMP SERVICE KIT**. (REFER TO HEP-SK1: PUMP SERVICE KIT EVD FOR FULL PARTS LIST)

- IF ITEM NO. 23 (**LPRV1**) IS ORDERED AS A SPARE PART, THIS ALREADY COMES WITH 2 OFF ITEM NO. 25 (**SEC014RF001**). THEREFORE THESE ARE NOT REQUIRED TO BE ORDERED SEPERATELY.

- FOR SUB ASSEMBLIES - ITEM NO. 1 (**15494-A**) & ITEM NO. 35 (**PMA048GZ001**) REFER TO THEIR INDIVIDUAL EVD's.

IMPORTANT

WHEN ORDERING SPARES YOU MUST STATE THE FULL PART NUMBER AND THE PRODUCT SERIAL NUMBER - FROM THE LABEL TO PROTECT YOUR WARRANTY ALWAYS USE GENUINE HI-FORCE PARTS.



| ITEM NO. | PART NUMBER | DESCRIPTION | QTY. | SPARE PARTS | SERVICE PARTS | REVISION |
|----------|-------------|--|------|-------------|---------------|----------|
| 1 | 15494 | PISTON BLOCK | 1 | ✗ | | 1 5717 |
| 2 | 15495 | PISTON | 1 | ✗ | | 2 5866 |
| 3 | 15496 | VALVE SEAT | 1 | ✗ | | 3 |
| 4 | 15509 | SUCTION/DELIVERY SPRING | 2 | ✗ | | 4 |
| 5 | 15508 | PUMP SPRING | 1 | ✗ | | 5 |
| 6 | BAC005SN000 | Ø5 mm STEEL BALL GRADE 100 | 2 | ✗ | | 6 |
| 7 | SEC014RF001 | O-RING - I.D. 10.82 mm, C.S. 1.78 mm, NITRILE 90 | 2 | | ✓ | 7 |
| 8 | SEC010RA001 | O-RING - I.D. 6.35 mm, C.S. 1.78 mm, NITRILE 70 | 1 | ✗ | | 8 |
| 9 | STC008SA001 | N1305-0031 SELF LOCKING RING | 1 | ✗ | | 9 |
| | | | | | | 10 |
| | | | | | | 11 |
| | | | | | | 12 |
| | | | | | | 13 |
| | | | | | | 14 |
| | | | | | | 15 |
| | | | | | | 16 |
| | | | | | | 17 |
| | | | | | | 18 |
| | | | | | | 19 |
| | | | | | | 20 |

NOTE:

- ALL PARTS ARE AVAILABLE TO BE ORDERED AS SPARE PARTS (UNLESS MARKED WITH ✗).

- ONLY PARTS MARKED WITH ✓ ARE AVAILABLE AS BOTH SPARE PARTS OR SERVICEABLE PARTS, FROM **HEP-SK1 PUMP SERVICE KIT**. (REFER TO HEP-SK1: PUMP SERVICE KIT EVD FOR FULL PARTS LIST).

IMPORTANT

WHEN ORDERING SPARES YOU MUST STATE THE FULL PART NUMBER AND THE PRODUCT SERIAL NUMBER - FROM THE LABEL TO PROTECT YOUR WARRANTY ALWAYS USE GENUINE HI-FORCE PARTS.



| ITEM NO. | PART NUMBER | DESCRIPTION | QTY. | SPARE PARTS | SERVICE PARTS | REVISION | |
|----------|-------------|--|------|-------------|---------------|----------|------|
| 1 | GP48 | GEAR PUMP | 1 | | | 1 | 5939 |
| 2 | PMC000TM001 | TRANSFER PLATE | 1 | | | 2 | 5983 |
| 3 | 15510A | CONNECTOR TUBE | 1 | | | 3 | |
| | 15510B | CONNECTOR TUBE | 1 | | | 4 | |
| 4 | SEC010RA001 | O-RING - I.D. 6.35 mm, C.S. 1.78 mm, NITRILE 70 | 2 | | ✓ | 5 | |
| 5 | SEC019RF002 | O-RING - I.D. 15.60, C.S. 1.78mm, NITRILE 90 | 2 | | ✓ | 6 | |
| 6 | PMC000XM001 | SEALING PLATE | 1 | | | 7 | |
| 7 | BLC006JD030 | M6 x 30 mm HEX SOCKET CAP HEAD SCREW | 3 | | | 8 | |
| 8 | 15507 | ADAPTOR | 1 | | | 9 | |
| 9 | PCC002WC001 | KEY TO FIT 200/300 PUMPS | 1 | | | 10 | |
| 10 | FAS008SP080 | M8 X 80 HEX SOCKET REDUCED CAP HEAD SCREW (FULLY THREADED) | 2 | | | 11 | |
| 11 | FPA013DC001 | GEAR PUMP ELBOW (INC WITH GEAR PUMP) | 1 | x | | 12 | |

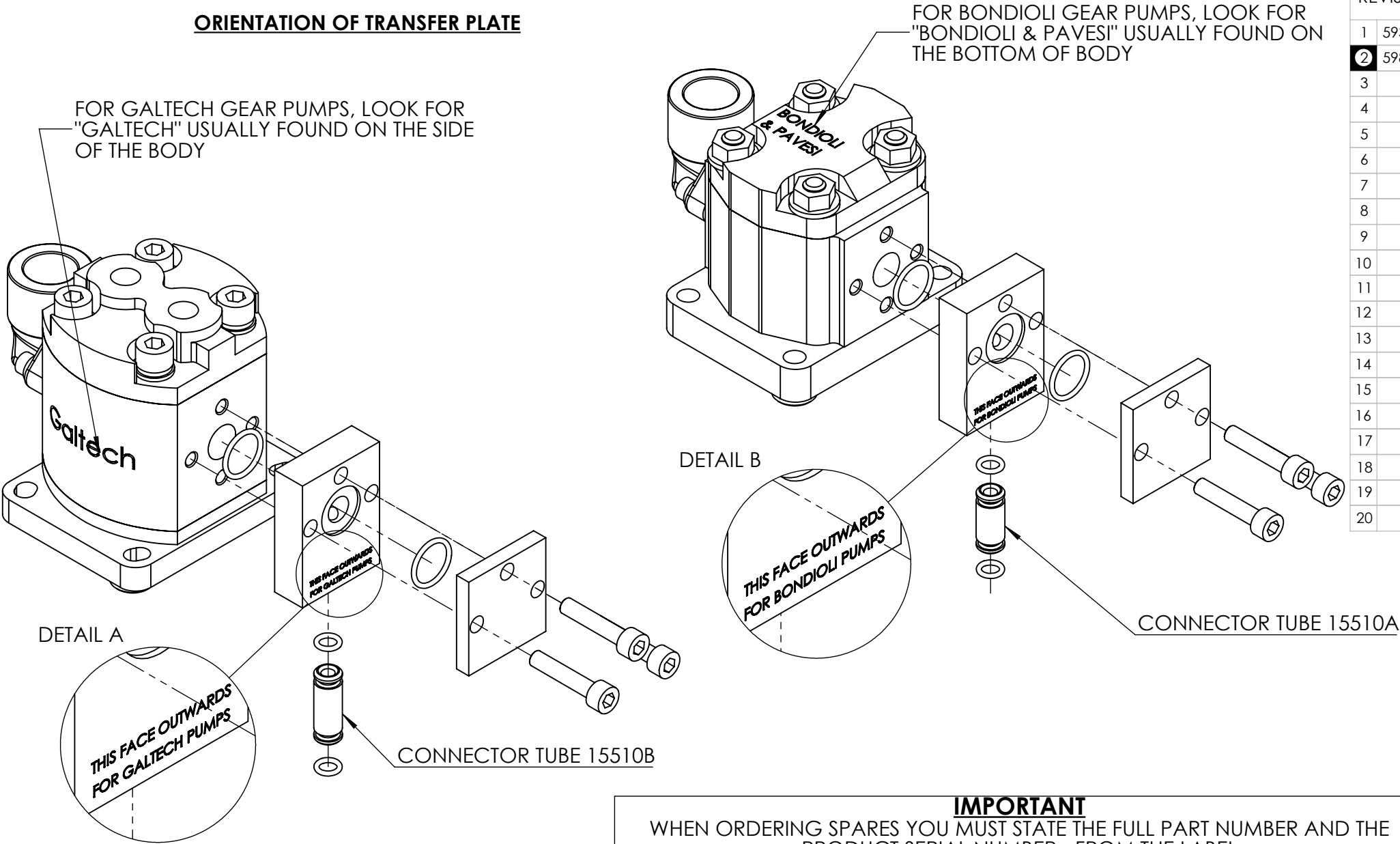
NOTE:

- ALL PARTS ARE AVAILABLE TO BE ORDERED AS SPARE PARTS (UNLESS MARKED WITH x)
- ONLY PARTS MARKED WITH ✓ ARE AVAILABLE AS BOTH SPARE PARTS OR SERVICEABLE PARTS, FROM HEP SK1 PUMP SERVICE KIT. (REFER TO HEP-SK1: PUMP SERVICE KIT EVD FOR FULL PARTS LIST)
- POSITION OF ITEM NO. 2 (PMC000TM001) IS TO BE DETERMINED BY THE BRAND OF THE GP48 GEAR PUMP SUPPLIED (REFER TO SHEET 2 FOR FURTHER DETAILS)
- ITEM NO. 3 USED IS DETERMINED BY THE BRAND OF THE GP48 GEAR PUMP SUPPLIED FOR HEP, HAP AND HPP PUMPS WITH SERIAL NUMBERS EARLIER THAN **BR9070**. FOR BONDIOLI GEAR PUMPS USE CONNECTOR TUBE 15510A AND FOR GALTECH GEAR PUMPS USE CONNECTOR TUBE 15510B (REFER TO SHEET 2 FOR FURTHER DETAILS)
- ITEM NO.10 (FAS008SP080) ARE TO REPLACE TWO SCREWS (BLC008KC080) ON THE TYPE200-24, PRIOR TO FITTING PMA048GZ001 (REFER TO SHEET 3 FOR FURTHER DETAILS)
- INDIVIDUAL ITEMS ARE NOT AVAILABLE AS SPARE PARTS FOR HEP, HAP AND HPP PUMPS WITH SERIAL NUMBERS EARLIER THAN **BR9070**. GP48 GEAR PUMP ASSEMBLY (PMA048GZ001) WILL NEED TO BE ORDERED. INDIVIDUAL ITEMS APART FROM ITEM NO.11 ARE AVAILABLE AS SPARE PARTS FOR HEP, HAP AND HPP PUMPS WITH SERIAL NUMBERS ABOVE **BR9070**

IMPORTANT

WHEN ORDERING SPARES YOU MUST STATE THE FULL PART NUMBER AND THE PRODUCT SERIAL NUMBER - FROM THE LABEL TO PROTECT YOUR WARRANTY ALWAYS USE GENUINE HI-FORCE PARTS.

ORIENTATION OF TRANSFER PLATE



REVISION

| | |
|----|------|
| 1 | 5939 |
| 2 | 5983 |
| 3 | |
| 4 | |
| 5 | |
| 6 | |
| 7 | |
| 8 | |
| 9 | |
| 10 | |
| 11 | |
| 12 | |
| 13 | |
| 14 | |
| 15 | |
| 16 | |
| 17 | |
| 18 | |
| 19 | |
| 20 | |

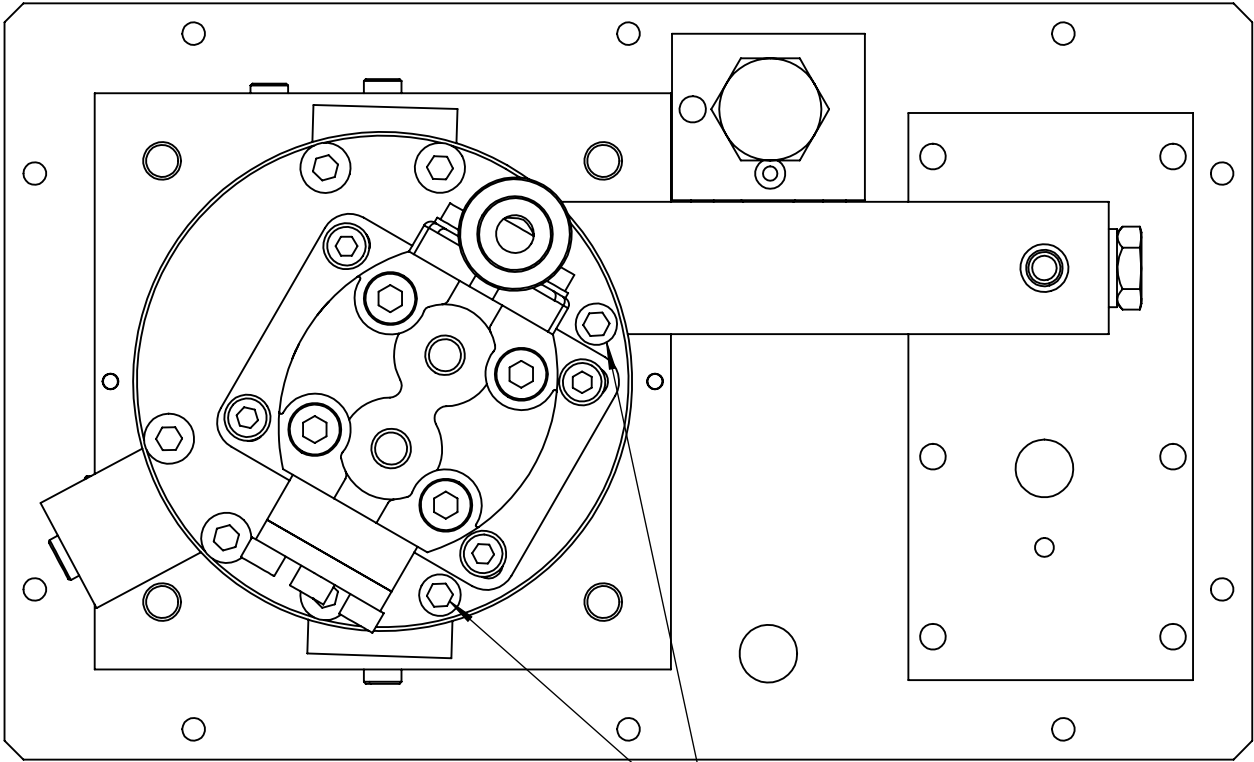
IMPORTANT

WHEN ORDERING SPARES YOU MUST STATE THE FULL PART NUMBER AND THE PRODUCT SERIAL NUMBER - FROM THE LABEL TO PROTECT YOUR WARRANTY ALWAYS USE GENUINE HI-FORCE PARTS.

REVISION

| | |
|----|------|
| 1 | 5939 |
| 2 | 5983 |
| 3 | |
| 4 | |
| 5 | |
| 6 | |
| 7 | |
| 8 | |
| 9 | |
| 10 | |
| 11 | |
| 12 | |
| 13 | |
| 14 | |
| 15 | |
| 16 | |
| 17 | |
| 18 | |
| 19 | |
| 20 | |

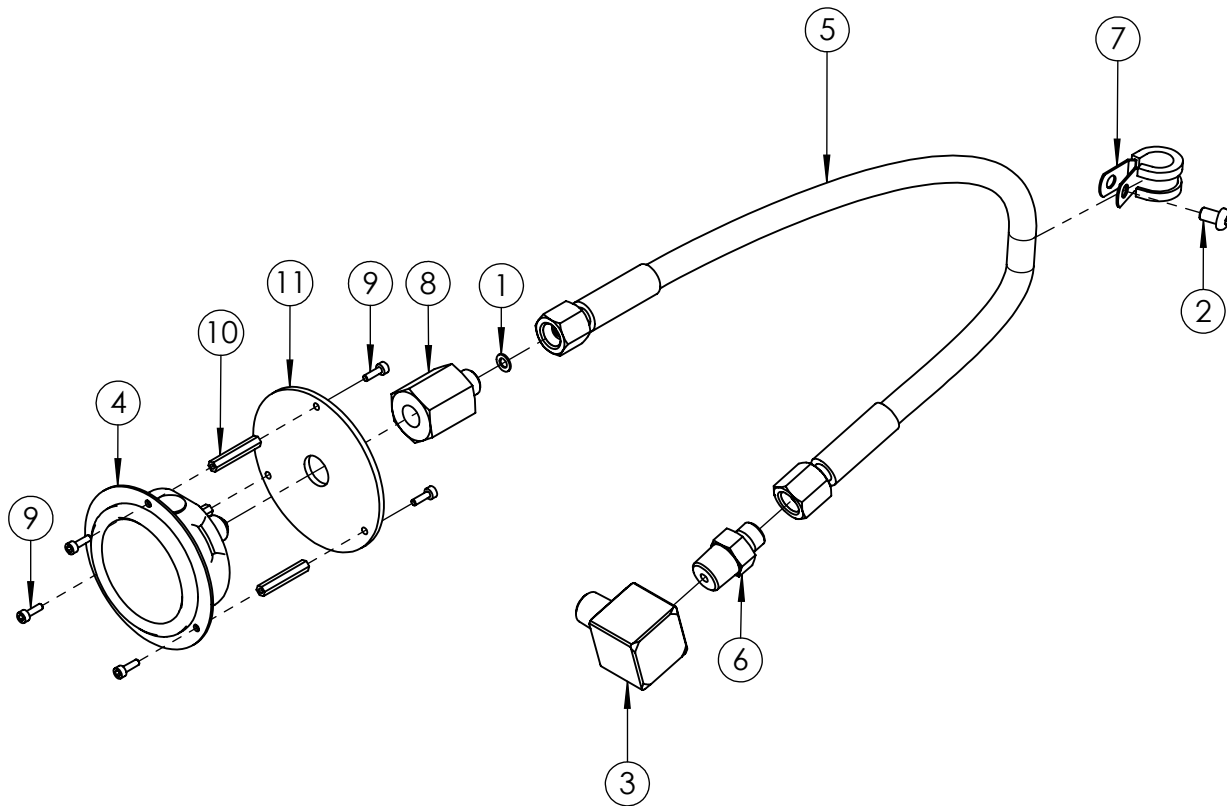
TYPE200-24: BOTTOM VIEW



REMOVE THE TWO CURRENT SCREWS FROM THESE TWO POSITIONS AND REPLACE WITH ITEM NO. 10 (FAS008SP080)

IMPORTANT

WHEN ORDERING SPARES YOU MUST STATE THE FULL PART NUMBER AND THE PRODUCT SERIAL NUMBER - FROM THE LABEL TO PROTECT YOUR WARRANTY ALWAYS USE GENUINE HI-FORCE PARTS.



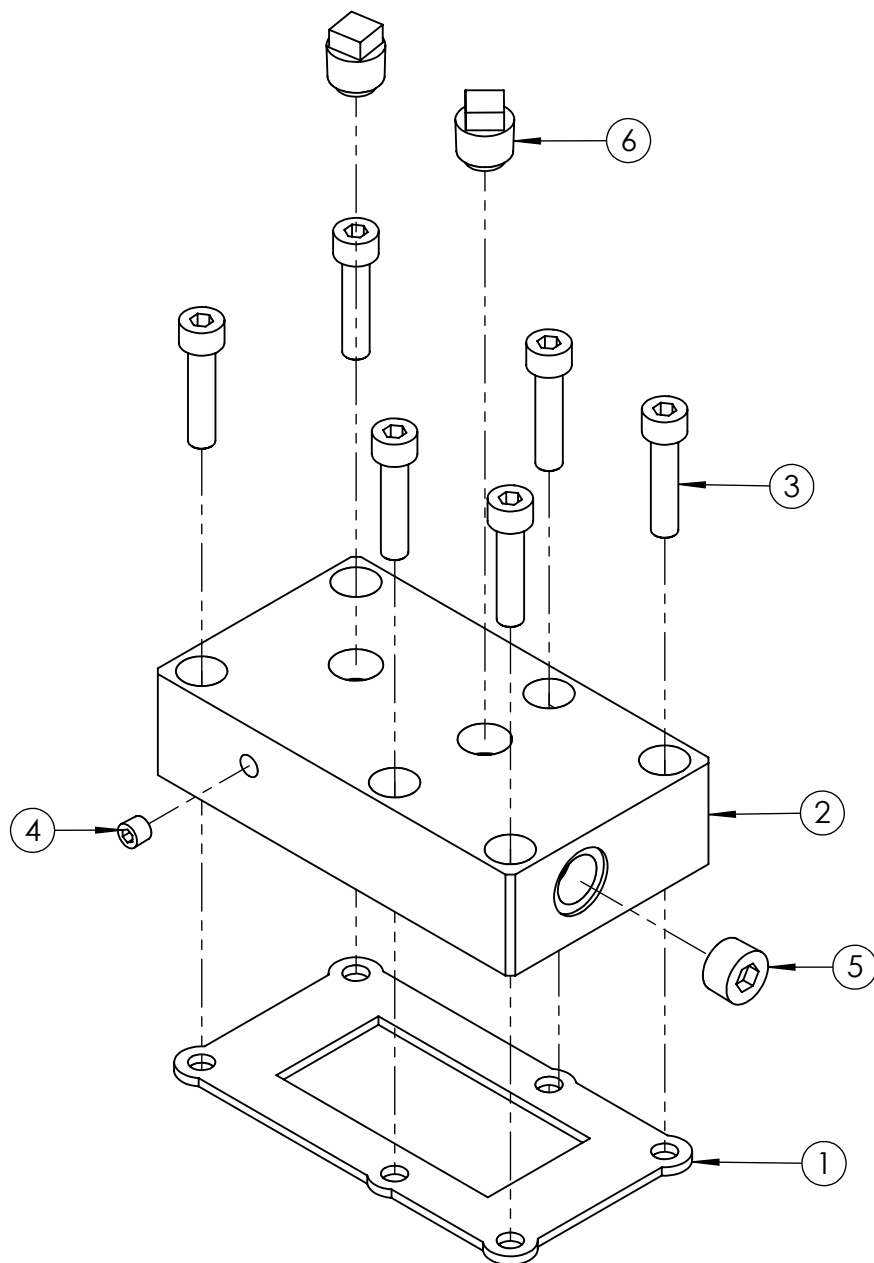
| ITEM NO. | PART NUMBER | DESCRIPTION | QTY. | SPARE PARTS | REVISION |
|----------|-------------|---|------|-------------|----------|
| 1 | WAC005EC001 | M5 X 9 X 1.0 COPPER SEALING WASHER | 1 | | 1 5717 |
| 2 | BLC006JH010 | M6 X 10 mm, HEX SOCKET, BUTTON HEAD SCREW | 1 | | 2 |
| 3 | HF16 | ELBOW, 3/8" NPT FEMALE TO 3/8" NPT MALE | 1 | | 3 |
| 4 | PGB063PF001 | FLANGE MOUNTED 700 Bar PRESSURE GAUGE | 1 | | 4 |
| 5 | HOC006GB001 | 700 Bar GAUGE HOSE WITH 1/4"BSP CONE FEMALE FITTINGS | 1 | | 5 |
| 6 | FPC010BN008 | M/M ADAPTOR 3/8 NPT x 1/4 BSP INT 60° CONE 1000 Bar (STAINLESS STEEL) | 1 | | 6 |
| 7 | ANC013PC001 | 13mm BLACK STAINLESS STEEL P CLIP | 1 | | 7 |
| 8 | FPC006BB002 | 700 Bar SS 1/4" BSPP x BSPP FIXED FEMALE GAUGE ADAPTOR | 1 | | 8 |
| 9 | BLC003ZD010 | M3 X 10 mm HEX SOCKET CAP HEAD SCREW | 6 | | 9 |
| 10 | NUC003UK001 | M3 FEMALE STEEL HEX STANDOFF 30mm LONG | 3 | | 10 |
| 11 | SFC085HA001 | STRAIN RELIEF PLATE | 1 | | 11 |

NOTE:

- ALL PARTS ARE AVAILABLE TO BE ORDERED AS SPARE PARTS (UNLESS MARKED WITH X).

IMPORTANT

WHEN ORDERING SPARES YOU MUST STATE THE FULL PART NUMBER AND THE PRODUCT SERIAL NUMBER - FROM THE LABEL TO PROTECT YOUR WARRANTY ALWAYS USE GENUINE HI-FORCE PARTS.



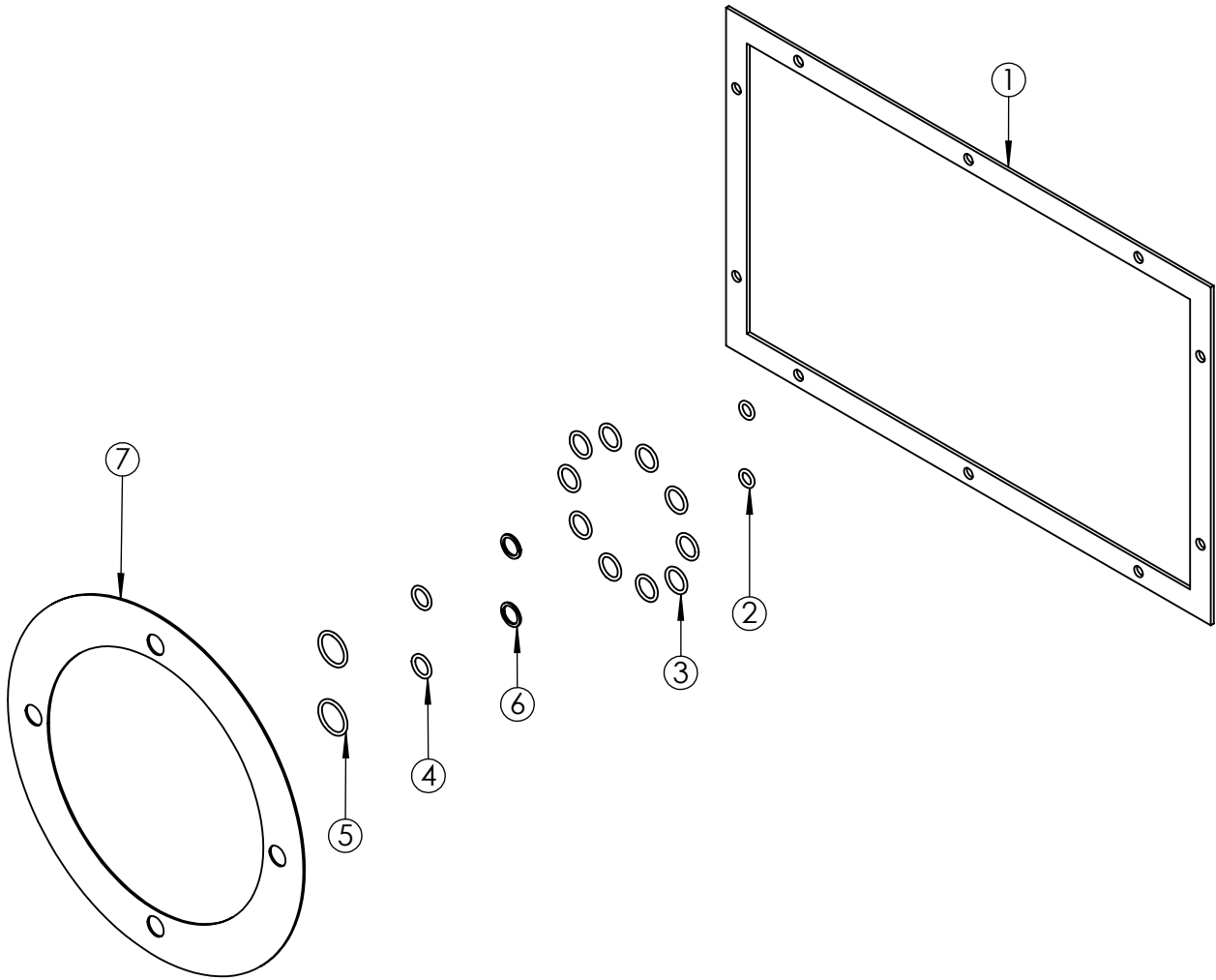
| ITEM NO. | PART NUMBER | DESCRIPTION | QTY. | SPARE PARTS | REVISION |
|----------|-------------|--------------------------------------|------|-------------|----------|
| 1 | SEC003KT001 | VALVE GASKET | 1 | | 1 5717 |
| 2 | VFC010BF010 | CONNECTOR PLATE | 1 | | 2 |
| 3 | BLC008KD035 | M8 x 35 mm HEX SOCKET CAP HEAD SCREW | 6 | | 3 |
| 4 | FPC002PN001 | 1/16" x 7/8" NPT SOCKET PLUG | 1 | | 4 |
| 5 | FPC010PN002 | 3/8" x 7/8" NPT SOCKET PLUG | 1 | | 5 |
| 6 | BPC010SP004 | 3/8 NPT PLASTIC BLANKING PLUG (RED) | 2 | | 6 |
| | | | | | 7 |
| | | | | | 8 |
| | | | | | 9 |
| | | | | | 10 |
| | | | | | 11 |
| | | | | | 12 |
| | | | | | 13 |
| | | | | | 14 |
| | | | | | 15 |
| | | | | | 16 |
| | | | | | 17 |
| | | | | | 18 |
| | | | | | 19 |
| | | | | | 20 |

NOTE:

- ALL PARTS ARE AVAILABLE TO BE ORDERED AS SPARE PARTS (UNLESS MARKED WITH ✕).

IMPORTANT

WHEN ORDERING SPARES YOU MUST STATE THE FULL PART NUMBER AND THE PRODUCT SERIAL NUMBER - FROM THE LABEL TO PROTECT YOUR WARRANTY ALWAYS USE GENUINE HI-FORCE PARTS.



| ITEM NO. | PART NUMBER | DESCRIPTION | QTY. |
|----------|-------------|--|------|
| 1 | 15482 | TANK GASKET | 1 |
| 2 | SEC010RA001 | O-RING - I.D. 6.35 mm, C.S. 1.78 mm, NITRILE 70 | 2 |
| 3 | SEC014RF001 | O-RING - I.D. 10.82 mm, C.S. 1.78 mm, NITRILE 90 | 10 |
| 4 | SEC013RA001 | O-RING - I.D. 9.25mm, C.S. 1.78mm, NITRILE 90 | 2 |
| 5 | SEC019RF002 | O-RING - I.D. 15.60, C.S. 1.78mm, NITRILE 90 | 2 |
| 6 | SEC013BA001 | BACK-UP RING - PTFE, SOLID SPLIT | 2 |
| 7 | SEC001KT003 | GASKET | 1 |

| REVISION |
|----------|
| 1 5717 |
| 2 5939 |
| 3 |
| 4 |
| 5 |
| 6 |
| 7 |
| 8 |
| 9 |
| 10 |
| 11 |
| 12 |
| 13 |
| 14 |
| 15 |
| 16 |
| 17 |
| 18 |
| 19 |
| 20 |

IMPORTANT

WHEN ORDERING SPARES YOU MUST STATE THE FULL PART NUMBER AND THE PRODUCT SERIAL NUMBER - FROM THE LABEL
TO PROTECT YOUR WARRANTY ALWAYS USE GENUINE HI-FORCE PARTS.