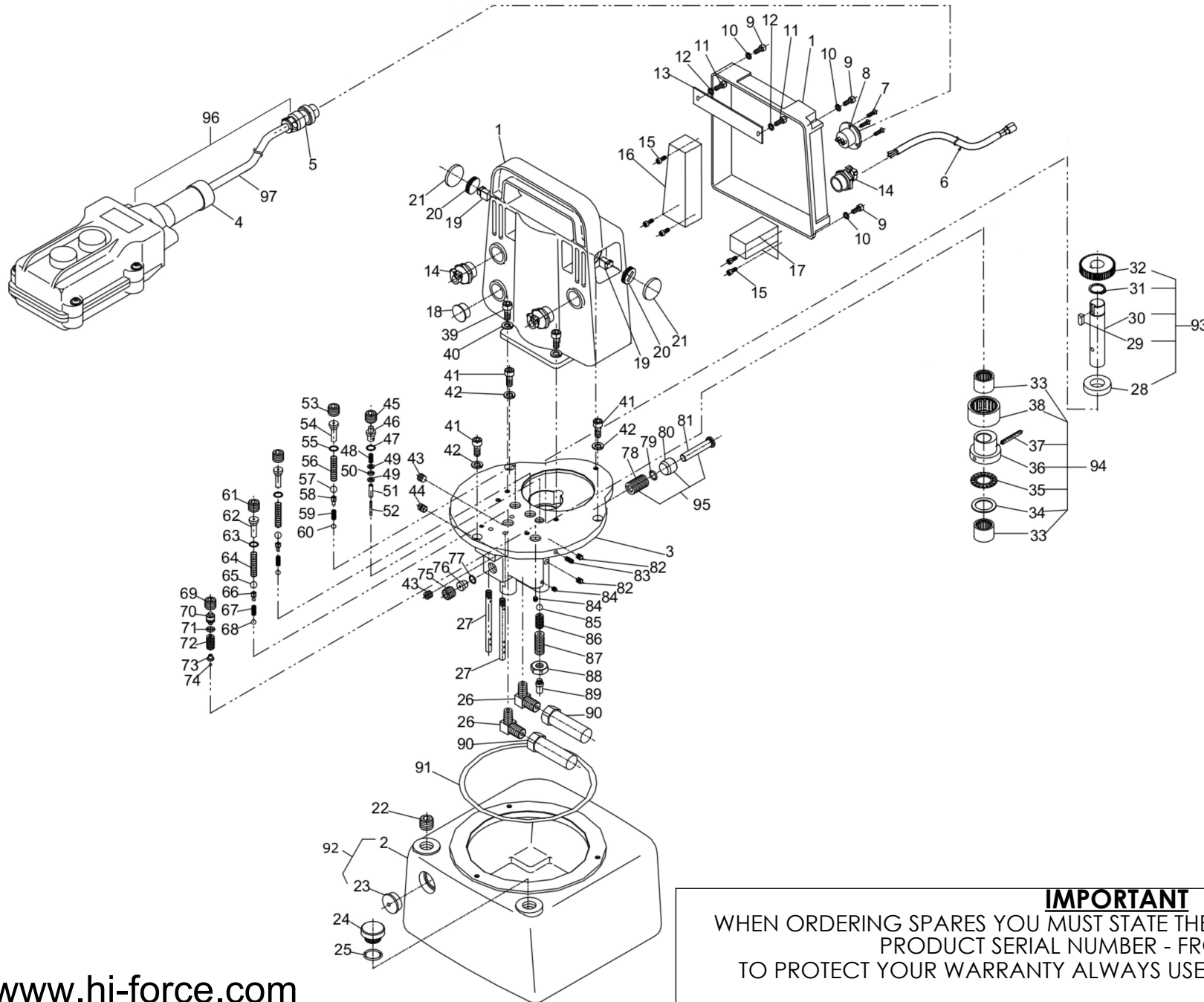


REVISION

1	
2	
3	6424
4	6430
5	
6	
7	
8	
9	
10	
11	
12	
13	
14	
15	
16	
17	
18	
19	
20	



**IMPORTANT**  
WHEN ORDERING SPARES YOU MUST STATE THE FULL PART NUMBER AND THE PRODUCT SERIAL NUMBER - FROM THE LABEL TO PROTECT YOUR WARRANTY ALWAYS USE GENUINE HI-FORCE PARTS.

ITEM No.	PART No.	DESCRIPTION	QTY.	ITEM No.	PART No.	DESCRIPTION	QTY.	ITEM No.	PART No.	DESCRIPTION	QTY.	ELECTRIC MOTOR TABLE				REVISION																																			
												ITEM No.	MODEL NO.	PART NUMBER	QTY.																																				
02	TA	RESERVOIR, 5 LTR	1	32	DS	No. 2 GEAR	1	66	HEP103-66	RETAINER	1	01	HEP103241LS	HEP103-01-110	1	1																																			
03	HEP103-03	PLATE	1	33	BA	BEARING	2	67	HEP103-67	SPRING	1	01	HEP103242LS	HEP103-01-220	1	2																																			
04	HEP103-04	PENDANT SWITCH	1	34	BA	THRUST WASHER	1	68	HEP103-68	STEEL BALL	1	01	HEP103241S	HEP103-01-110	1	3 6424																																			
05	HEP103-05	PLUG SOCKET	1	35	BA	THRUST BEARING	1	69	HEP103-69	PUSHING SCREW	1	01	HEP103242S	HEP103-01-220	1	4 6430																																			
06	HEP103-06	POWER CORD, 2m	1	36	BA	ECCENTRIC COLLAR	1	70	X	SPRING PUSHER	1	01	HEP103341	HEP103-01-110	1	5																																			
07	HEP103-07	SCREW	3	37	BA	SPRING PIN	1	71	X	O-RING	1	01	HEP103342	HEP103-01-220	1	6																																			
08	HEP103-08	METAL PLUG SOCKET	1	38	BA	BEARING	1	72	X	SPRING	1	01	HEP103441	HEP103-01-110	1	7																																			
09	MA	FITTING BOLT	4	39	HEP103-39	FITTING BOLT	3	73	X	BALL RECEIVER	1	01	HEP103442	HEP103-01-220	1	8																																			
10	MA	SPRING WASHER	4	40	HEP103-40	SPRING WASHER	3	74	X	STEEL BALL	1	01	HEP103441LS	HEP103-01-110	1	9																																			
11	HEP103-11	FITTING BOLT	2	41	HEP103-41	FITTING BOLT	3	75	HEP103-75	SCREW PLUG	1	01	HEP103442LS	HEP103-01-220	1	10																																			
12	HEP103-12	SPRING WASHER	2	42	HEP103-42	SPRING WASHER	3	76	HEP103-76	BLIND PLUG	1	<table border="1"> <thead> <tr> <th colspan="3">DIRECTIONAL VALVE TABLE</th> </tr> <tr> <th>MODEL NO.</th> <th>PART NUMBER</th> <th>QTY.</th> </tr> </thead> <tbody> <tr> <td>HEP103241LS</td> <td>HEP103-SVS-2C</td> <td>1</td> </tr> <tr> <td>HEP103242LS</td> <td>HEP103-SVS-2C</td> <td>1</td> </tr> <tr> <td>HEP103241S</td> <td>HEP103-SVS-2H</td> <td>1</td> </tr> <tr> <td>HEP103242S</td> <td>HEP103-SVS-2H</td> <td>1</td> </tr> <tr> <td>HEP103341</td> <td>HEP103-MVS-3</td> <td>1</td> </tr> <tr> <td>HEP103342</td> <td>HEP103-MVS-3</td> <td>1</td> </tr> <tr> <td>HEP103441</td> <td>HEP103-MVS-4</td> <td>1</td> </tr> <tr> <td>HEP103442</td> <td>HEP103-SVS-4</td> <td>1</td> </tr> <tr> <td>HEP103441LS</td> <td>HEP103-SVS-4H</td> <td>1</td> </tr> <tr> <td>HEP103442LS</td> <td>HEP103-SVS-4H</td> <td>1</td> </tr> </tbody> </table>				DIRECTIONAL VALVE TABLE			MODEL NO.	PART NUMBER	QTY.	HEP103241LS	HEP103-SVS-2C	1	HEP103242LS	HEP103-SVS-2C	1	HEP103241S	HEP103-SVS-2H	1	HEP103242S	HEP103-SVS-2H	1	HEP103341	HEP103-MVS-3	1	HEP103342	HEP103-MVS-3	1	HEP103441	HEP103-MVS-4	1	HEP103442	HEP103-SVS-4	1	HEP103441LS	HEP103-SVS-4H	1	HEP103442LS	HEP103-SVS-4H	1
DIRECTIONAL VALVE TABLE																																																			
MODEL NO.	PART NUMBER	QTY.																																																	
HEP103241LS	HEP103-SVS-2C	1																																																	
HEP103242LS	HEP103-SVS-2C	1																																																	
HEP103241S	HEP103-SVS-2H	1																																																	
HEP103242S	HEP103-SVS-2H	1																																																	
HEP103341	HEP103-MVS-3	1																																																	
HEP103342	HEP103-MVS-3	1																																																	
HEP103441	HEP103-MVS-4	1																																																	
HEP103442	HEP103-SVS-4	1																																																	
HEP103441LS	HEP103-SVS-4H	1																																																	
HEP103442LS	HEP103-SVS-4H	1																																																	
13	HEP103-13	GUIDE PLATE	1	43	HEP103-43	BLIND PLUG	2	77	HEP103-77	COPPER PACKING	1	11																																							
14	HEP103-14	CAP CONE	3	44	HEP103-44	EXPANDER	1	78	HP	SPRING	1	12																																							
15	HEP105-15	FITTING BOLT	5	45	HEP103-45	BLIND SCREW	1	79	HEP103-79	O-RING	1	13																																							
16	HEP103-16-01	PC BOARD 341, 241S & 441	1	46	HEP103-46	BLIND PLUG	1	80	HP	LP PISTON	1	14																																							
16	HEP103-16-02	PC BOARD 342,242S & 442	1	47	X	COPPER PACKING	1	81	HP	HP PISTON	1	15																																							
16	HEP103-16-04	PC BOARD 241LS & 441LS	1	48	HEP103-48	SPRING	1	82	HEP103-82	EXPANDER	2	16																																							
16	HEP103-16-08	PC BOARD 242LS & 442LS	1	49	X	BACK UP-RING	2	83	HEP103-83	LOCK SCREW	1	17																																							
17	HEP103-17-110	DC POWER SUPPLY 110V	1	50	X	O-RING	1	84	HEP103-84	EXPANDER	2	18																																							
17	HEP103-17-220	DC POWER SUPPLY 220V	1	51	HEP103-51	NEEDLE ROLLER	1	85	HEP103-85	STEEL BALL	1	19																																							
18	HEP103-18	HOLE PLUG	3	52	HEP103-52	PUSH PIN	1	86	HEP103-86	SPRING	1	20																																							
19	X	CARBON BRUSH	2	53	HEP103-53	BLIND PLUG	2	87	HEP103-87	ADJUSTING SCREW	1																																								
20	HEP103-20	SCREW CAP	2	54	HEP103-54	RETAINER	2	88	HEP103-88	LOCK NUT	1																																								
21	HEP103-21	RUBBER PLUG	2	55	HEP103-55	COPPER PACKING	2	89	HEP103-89	AIR FILTER	1																																								
22	HEP103-22	BLIND SCREW	1	56	HEP103-56	SPRING	2	90	HEP103-90	FILTER	2																																								
23	TA	OIL GAUGE	1	57	HEP103-57	STEEL BALL	2	91	X	O-RING	1																																								
24	HEP103-24	FILLER PLUG	1	58	HEP103-58	RETAINER	2	92	HEP103-92	TANK ASSEMBLY	1																																								
25	HEP103-25	O-RING	1	59	HEP103-59	SPRING	2	93	HEP103-93	DRIVE SHAFT ASSEMBLY	1																																								
26	HEP103-26	L FITTING	2	60	HEP103-60	STEEL BALL	2	94	HEP103-94	BEARING ASSEMBLY	1																																								
27	HEP103-27	RETURN PIPE	2	61	HEP103-61	BLIND PLUG	1	95	HEP103-95	HP PISTON ASSEMBLY	1																																								
28	DS	OIL SEAL	1	62	HEP103-62	RETAINER	1	96	HEP103-04-A	PENDANT SWITCH COMPLETE ASSEMBLY	1																																								
29	DS	KEY	1	63	HEP103-63	COPPER PACKING	1	97	HEP103-04-C	PENDANT SWITCH CORD 2.5 m	1																																								
30	DS	DRIVE SHAFT	1	64	HEP103-64	SPRING	1																																												
31	DS	SNAP RING	1	65	HEP103-65	STEEL BALL	1																																												

NOTE: ITEMS MARKED "MA" ONLY AVAILABLE AS PART OF MOTOR ASSY. ITEM No.1

NOTE: ITEMS MARKED "TA" ONLY AVAILABLE AS TANK ASSY. ITEM No. 92

NOTE: ITEMS MARKED "DS" ONLY AVAILABLE AS DRIVE SHAFT ASSY. ITEM No. 93

NOTE: ITEMS MARKED "BA" ONLY AVAILABLE AS BEARING ASSY. ITEM No. 94

NOTE: ITEMS MARKED "HP" ONLY AVAILABLE AS HP PISTON ASSY. ITEM No. 95

NOTE: ITEMS MARKED "X" SUPPLIED IN KIT HEP103TP1-K ONLY

**IMPORTANT**

WHEN ORDERING SPARES YOU MUST STATE THE FULL PART NUMBER AND THE PRODUCT SERIAL NUMBER - FROM THE LABEL TO PROTECT YOUR WARRANTY ALWAYS USE GENUINE HI-FORCE PARTS.