

REVISION

1 5717

2 6146

3

4

5

6

7

8

9

10

11

12

13

14

15

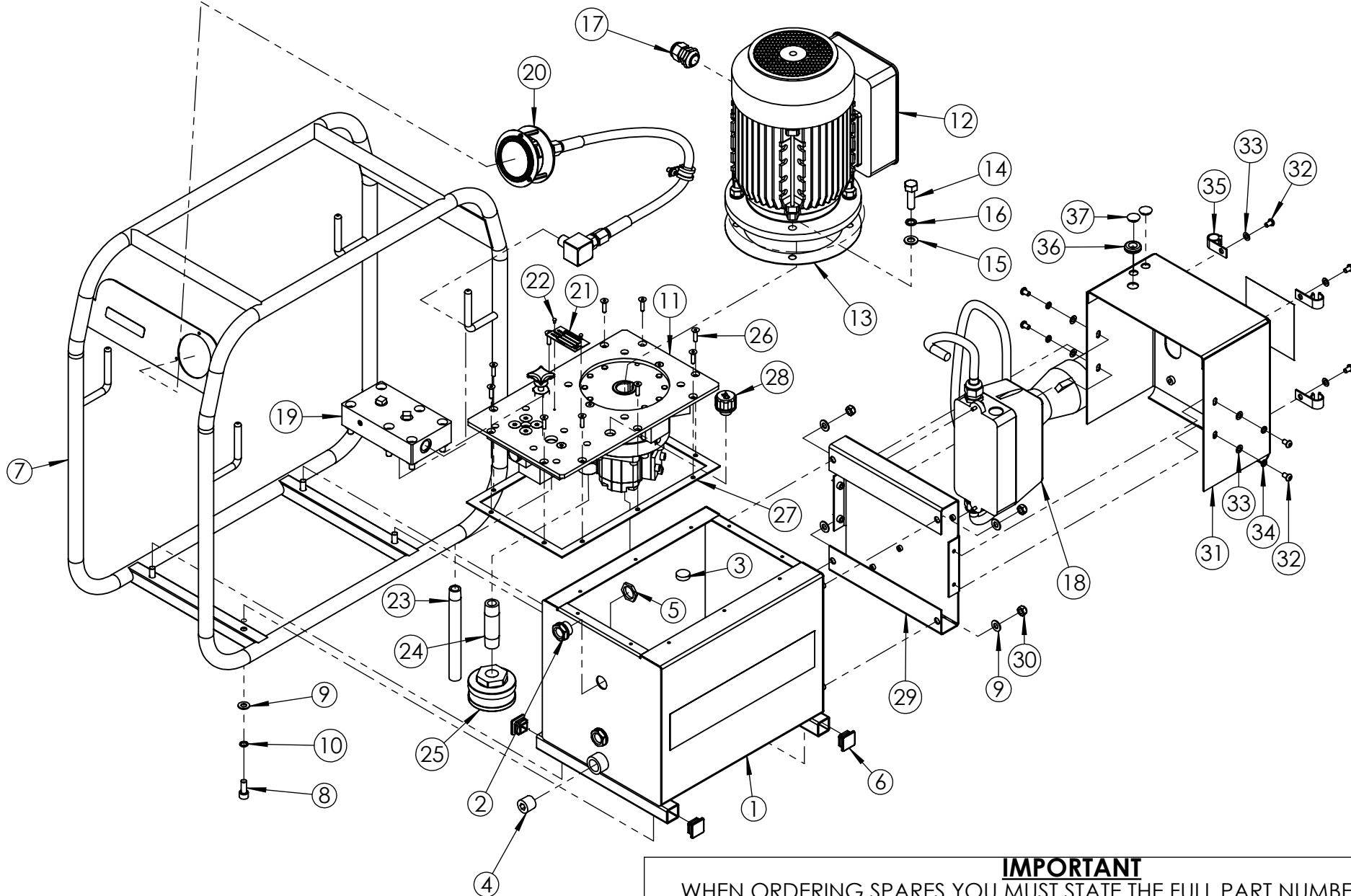
16

17

18

19

20



**IMPORTANT**

WHEN ORDERING SPARES YOU MUST STATE THE FULL PART NUMBER AND THE PRODUCT SERIAL NUMBER - FROM THE LABEL TO PROTECT YOUR WARRANTY ALWAYS USE GENUINE HI-FORCE PARTS.

| ITEM NO. | PART NUMBER        | DESCRIPTION                                  | QTY. | SPARE PARTS | SERVICE PARTS | ITEM NO. | PART NUMBER | DESCRIPTION   | QTY. | SPARE PARTS | SERVICE PARTS |
|----------|--------------------|--|------|-------------|---------------|----------|-------------|---|------|-------------|---------------|
| 1        | TAC010AS012        | 10L Tank                                     | 1    |             |               | 27       | 15482       | TANK GASKET   | 1    |             | ✓             |
| 2        | BLC021YT010        | SIGHT GLASS HGF.13 BLACK OIL LEVEL INDICATOR | 2    |             |               | 28       | BPC010SP002 | FILLER  | 1    |             |               |
| 3        | DCSF00328          | DOUBLE SIDED MAGNET                          | 1    |             |               | 29       | TAC000FS003 | MOUNTING PLATE  | 1    |             |               |
| 4        | FPC013PC001        | 1/2" BSP PLUG - HEX SOCKET                   | 1    |             |               | 30       | NUC008KC000 | M8 NYLOC NUT  | 4    |             |               |
| 5        | NUC021-B000        | 1/2" BSP LOCK NUT                            | 2    |             |               | 31       | TAC000FS004 | HOUSING   | 1    |             |               |
| 6        | BPC025KP001        | 1" SQ RIBBED INSERT BLACK                    | 4    |             |               | 32       | BLC006JH010 | M6 X 10 mm BUTTON HEAD HEX SOCKET SCREW               | 8    |             |               |
| 7        | TAC010CS002        | 10L ROLL FRAME                               | 1    |             |               | 33       | WAC006AF000 | M6 ZINC WASHER  | 8    |             |               |
| 8        | BLC008KD020        | M8 x 20 mm HEX SOCKET CAP HEAD SCREW         | 4    |             |               | 34       | WAC006BC001 | M6 SPRING ZINC WASHER (SQUARE SECTION)                | 4    |             |               |
| 9        | WAC008AB000        | M8 PLAIN WASHER                              | 8    |             |               | 35       | ANC015PC001 | CABLE CLIP BLACK SCREW<br>POLYACETAL CABLE CLIP, 15mm | 4    |             |               |
| 10       | WAC008BB000        | M8 ZINC PLATED SPRING WASHER                 | 4    |             |               | 36       | SEC013EH001 | 12.7mm ID BLACK PVC OPEN GROMMET                      | 1    |             |               |
| 11       | <b>TYPE200-24</b>  | 200 SERIES PUMP UNIT                         | 1    |             |               | 37       | SEC013EH002 | 12.7mm OD BLACK PVC BLIND GROMMET                     | 2    |             |               |
| 12       | EM230-1.5-4LAF     | ELECTRIC MOTOR 1.5KW 230VAC                  | 1    |             |               |          |             |   |      |             |               |
| 13       | SEC001KT003        | GASKET                                       | 1    |             | ✓             |          |             |   |      |             |               |
| 14       | BLC010LB035        | M10 x 35 mm HEX HEAD BOLT, ZINC PLATED       | 4    |             |               |          |             |   |      |             |               |
| 15       | WAC010AB000        | M10 ZINC PLATED FLAT WASHER                  | 4    |             |               |          |             |   |      |             |               |
| 16       | WAC010BZ000        | M10 SPRING WASHER                            | 4    |             |               |          |             |   |      |             |               |
| 17       | NUC020LS002        | GLAND 6-12MM                                 | 1    |             |               |          |             |   |      |             |               |
| 18       | <b>EMA230UE001</b> | MOTOR STARTER ASSEMBLY 230V                  | 1    |             |               |          |             |   |      |             |               |
| 19       | <b>PM1</b>         | PORT PLATE (15777)                           | 1    |             |               |          |             |   |      |             |               |
| 20       | <b>PGP063AK001</b> | HEP & HAP PRESSURE GAUGE ASSEMBLY            | 1    |             |               |          |             |   |      |             |               |
| 21       | AAN000UP001        | 60 x 30 mm UNIVERSAL NAME PLATE              | 1    | x           |               |          |             |   |      |             |               |
| 22       | FAS002HZ001        | NO.4 x 3/16 HAMMER DRIVE SCREW               | 2    |             |               |          |             |   |      |             |               |
| 23       | TAC000PA001        | 160 mm LONG SUCTION PIPE                     | 1    |             |               |          |             |   |      |             |               |
| 24       | FPC013AC010        | 1/2" BSPT SUCTION PIPE                       | 1    |             |               |          |             |   |      |             |               |
| 25       | FFC045MZ001        | FILTER                                       | 1    |             |               |          |             |   |      |             |               |
| 26       | BLC005HF020        | M5 x 20 mm HEX SOCKET COUNTERSUNK SCREW      | 10   |             |               |          |             |   |      |             |               |

REVISION

|    |      |
|----|------|
| 1  | 5717 |
| 2  | 6146 |
| 3  |      |
| 4  |      |
| 5  |      |
| 6  |      |
| 7  |      |
| 8  |      |
| 9  |      |
| 10 |      |
| 11 |      |
| 12 |      |
| 13 |      |
| 14 |      |
| 15 |      |
| 16 |      |
| 17 |      |
| 18 |      |
| 19 |      |
| 20 |      |

**NOTE:**

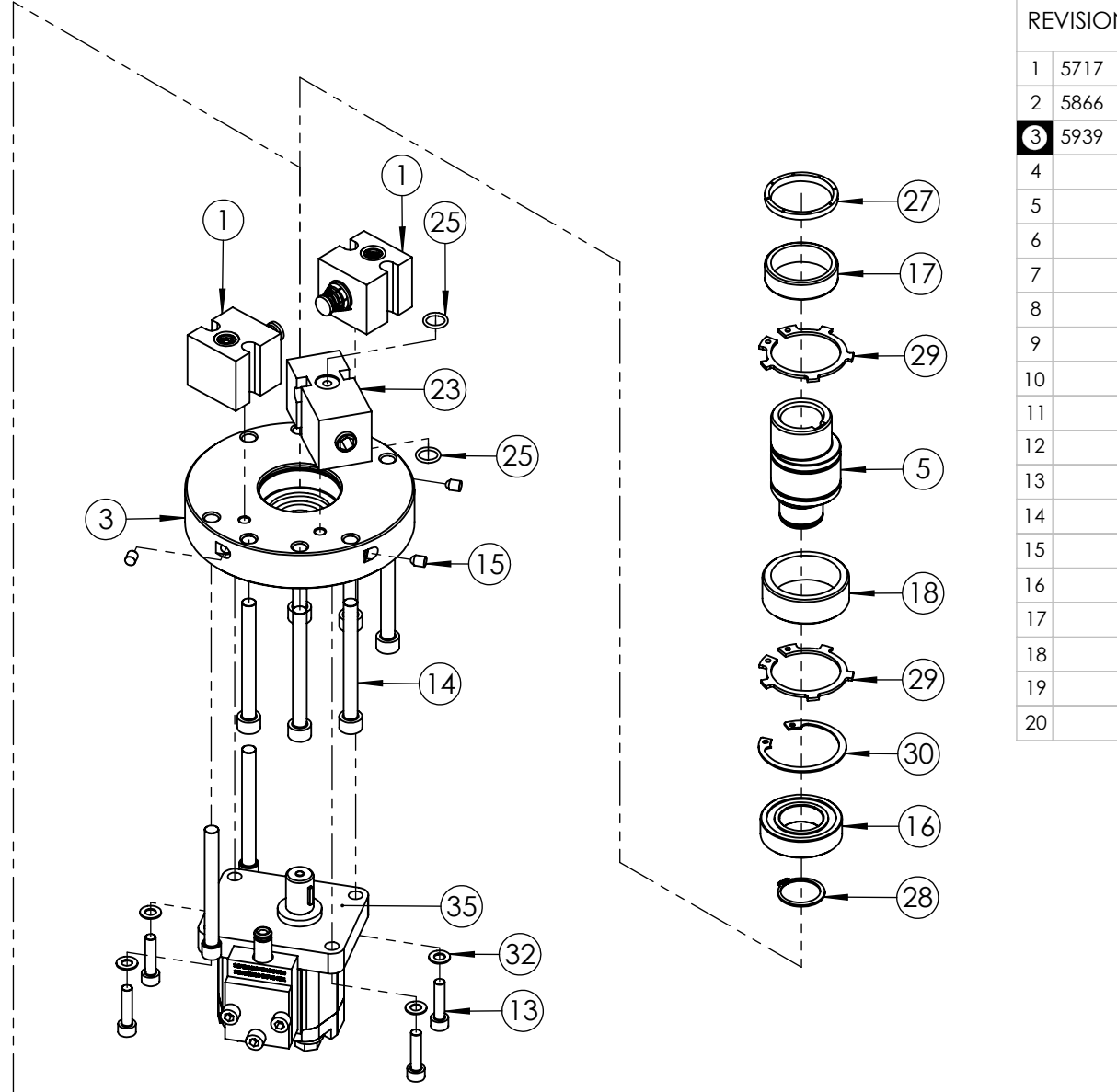
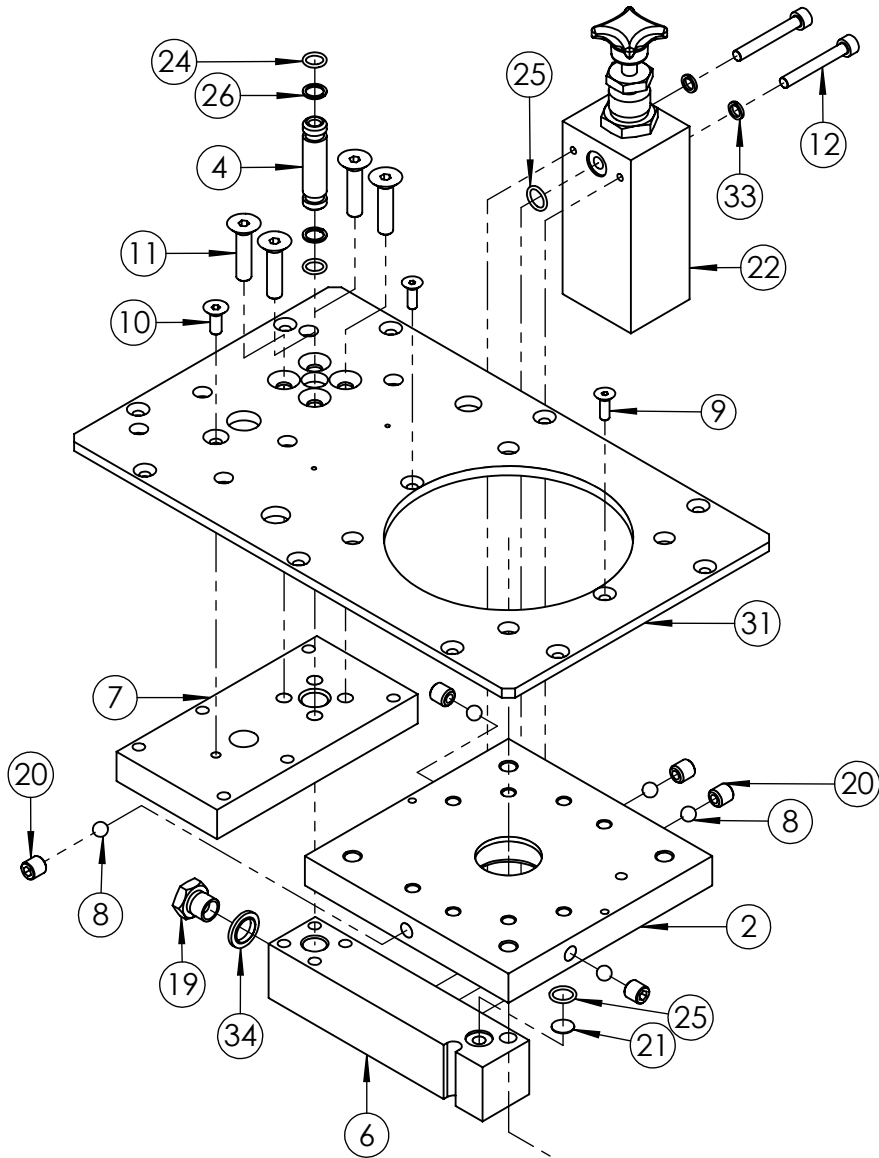
- ALL PARTS ARE AVAILABLE TO BE ORDERED AS SPARE PARTS (UNLESS MARKED WITH **x**).

- ONLY PARTS MARKED WITH ✓ ARE AVAILABLE AS BOTH SPARE PARTS OR SERVICEABLE PARTS, FROM **HEP-SK1 PUMP SERVICE KIT**. (REFER TO HEP-SK1: PUMP SERVICE KIT EVD FOR FULL PARTS LIST)

- FOR SUB ASSEMBLIES (ITEM NO.S 11,18,19 & 20) PLEASE REFER TO THEIR INDIVIDUAL EVD'S.

**IMPORTANT**

WHEN ORDERING SPARES YOU MUST STATE THE FULL PART NUMBER AND THE PRODUCT SERIAL NUMBER - FROM THE LABEL TO PROTECT YOUR WARRANTY ALWAYS USE GENUINE HI-FORCE PARTS.



REVISION

|          |      |
|----------|------|
| 1        | 5717 |
| 2        | 5866 |
| <b>3</b> | 5939 |
| 4        |      |
| 5        |      |
| 6        |      |
| 7        |      |
| 8        |      |
| 9        |      |
| 10       |      |
| 11       |      |
| 12       |      |
| 13       |      |
| 14       |      |
| 15       |      |
| 16       |      |
| 17       |      |
| 18       |      |
| 19       |      |
| 20       |      |

**IMPORTANT**

WHEN ORDERING SPARES YOU MUST STATE THE FULL PART NUMBER AND THE PRODUCT SERIAL NUMBER - FROM THE LABEL TO PROTECT YOUR WARRANTY ALWAYS USE GENUINE HI-FORCE PARTS.

| ITEM NO. | PART NUMBER    | DESCRIPTION                                      | QTY. | SPARE PARTS | SERVICE PARTS |
|----------|----------------|--|------|-------------|---------------|
| 1        | <b>15494-A</b> | PISTON BLOCK ASSEMBLY                            | 2    |             |               |
| 2        | 15497          | UPPER PLATE                                      | 1    |             |               |
| 3        | 15499          | LOWER PLATE                                      | 1    |             |               |
| 4        | 15503          | CONNECTOR PIPE                                   | 1    |             |               |
| 5        | 15505          | 24mm DRIVE SHAFT                                 | 1    |             |               |
| 6        | 17587          | TRANSFER BLOCK                                   | 1    |             |               |
| 7        | 17588          | VALVE PLATE                                      | 1    |             |               |
| 8        | BAC008SN000    | Ø8 mm STEEL BALL GRADE 100                       | 5    |             |               |
| 9        | BLC005HF016    | M5 x 16 mm HEX SOCKET COUNTERSUNK SCREW          | 2    |             |               |
| 10       | BLC006JE016    | M6 x 16 mm HEX SOCKET COUNTERSUNK SCREW          | 1    |             |               |
| 11       | BLC008KF035    | M8 x 35 mm HEX SOCKET COUNTERSUNK SCREW          | 4    |             |               |
| 12       | BLC006JC045    | M6 x 45 mm HEX SOCKET CAP HEAD SCREW             | 2    |             |               |
| 13       | BLC006JD025    | M6 x 25 mm HEX SOCKET CAP HEAD SCREW             | 4    |             |               |
| 14       | BLC008KC080    | M8 x 80 mm HEX SOCKET CAP HEAD SCREW             | 6    |             |               |
| 15       | BPC006RS001    | SEALING PLUG                                     | 3    |             |               |
| 16       | BSC025MC001    | LOWER PLATE BEARING                              | 1    |             |               |
| 17       | BSC035NC001    | UPPER PLATE BEARING                              | 1    |             |               |
| 18       | BSC040ND001    | ECCENTRIC BEARING                                | 1    |             |               |
| 19       | FAS006GJ010    | 1/4" BSP HEX HEAD BLANKING PLUG                  | 1    |             |               |
| 20       | FAS010MA010    | M10 X 10 CUP POINT GRUB SCREW                    | 5    |             |               |
| 21       | FFC012MA001    | SUCTION FILTER                                   | 1    |             |               |
| 22       | HPRV1          | HIGH PRESSURE R/VALVE                            | 1    |             |               |
| 23       | LPRV1          | LOW PRESSURE R/VALVE                             | 1    |             |               |
| 24       | SEC013RA001    | O-RING - I.D. 9.25mm, C.S. 1.78mm, NITRILE 90    | 2    |             | ✓             |
| 25       | SEC014RF001    | O-RING - I.D. 10.82 mm, C.S. 1.78 mm, NITRILE 90 | 4    |             | ✓             |

| ITEM NO. | PART NUMBER        | DESCRIPTION                                | QTY. | SPARE PARTS | SERVICE PARTS |
|----------|--------------------|--|------|-------------|---------------|
| 26       | SEC013BA001        | BACK-UP RING - PTFE, SOLID SPLIT           | 2    |             | ✓             |
| 27       | SEC035WE001        | UPPER PLATE OIL SEAL                       | 1    |             |               |
| 28       | STC025AA001        | EXTERNAL CIRCLIP - 25 x 1.2 mm D1400/025   | 1    |             |               |
| 29       | STC040AA001        | EXTERNAL CIRCLIP - 40 x 1.75 mm D2100/0400 | 2    |             |               |
| 30       | STC047BA001        | INTERNAL CIRCLIP - 47 x 1.75 mm D1300/0470 | 1    |             |               |
| 31       | TAC000BA003        | COVER PLATE                                | 1    |             |               |
| 32       | WAC006AF000        | M6 ZINC WASHER                             | 4    |             |               |
| 33       | WAC006BC001        | M6 SPRING ZINC WASHER (SQUARE SECTION)     | 2    |             |               |
| 34       | WAC007HD000        | 1/4" BSP SELF CENTERING BONDED WASHER      | 1    |             |               |
| 35       | <b>PMA048GZ001</b> | GP48 GEAR PUMP ASSEMBLY                    | 1    |             |               |

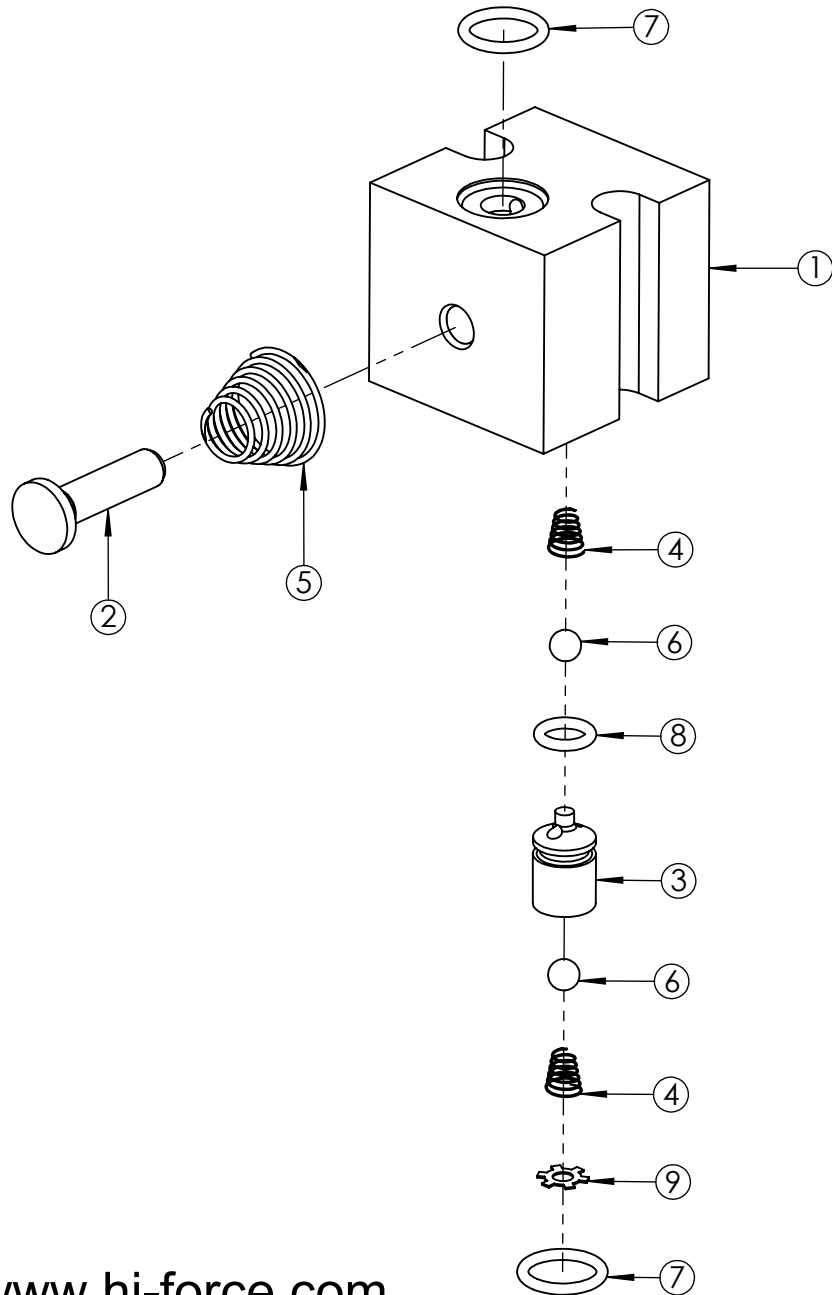
| REVISION |      |
|----------|------|
| 1        | 5717 |
| 2        | 5866 |
| <b>3</b> | 5939 |
| 4        |      |
| 5        |      |
| 6        |      |
| 7        |      |
| 8        |      |
| 9        |      |
| 10       |      |
| 11       |      |
| 12       |      |
| 13       |      |
| 14       |      |
| 15       |      |
| 16       |      |
| 17       |      |
| 18       |      |
| 19       |      |
| 20       |      |

**NOTE:**

- ALL PARTS ARE AVAILABLE TO BE ORDERED AS SPARE PARTS (UNLESS MARKED WITH X).
- ONLY PARTS MARKED WITH ✓ ARE AVAILABLE AS BOTH SPARE PARTS OR SERVICEABLE PARTS, FROM **HEP-SK1 PUMP SERVICE KIT**. (REFER TO HEP-SK1: PUMP SERVICE KIT EVD FOR FULL PARTS LIST)
- IF ITEM NO. 23 (**LPRV1**) IS ORDERED AS A SPARE PART, THIS ALREADY COMES WITH 2 OFF ITEM NO. 25 (**SEC014RF001**). THEREFORE THESE ARE NOT REQUIRED TO BE ORDERED SPERATELY.
- FOR SUB ASSEMBLIES - ITEM NO. 1 (**15494-A**) & ITEM NO. 35 (**PMA048GZ001**) REFER TO THEIR INDIVIDUAL EVD'S.

**IMPORTANT**

WHEN ORDERING SPARES YOU MUST STATE THE FULL PART NUMBER AND THE PRODUCT SERIAL NUMBER - FROM THE LABEL TO PROTECT YOUR WARRANTY ALWAYS USE GENUINE HI-FORCE PARTS.



| ITEM NO. | PART NUMBER | DESCRIPTION                                      | QTY. | SPARE PARTS | SERVICE PARTS | REVISION |
|----------|-------------|--|------|-------------|---------------|----------|
| 1        | 15494       | PISTON BLOCK                                     | 1    | X           |               | 1 5717   |
| 2        | 15495       | PISTON   | 1    | X           |               | 2 5866   |
| 3        | 15496       | VALVE SEAT                                       | 1    | X           |               | 3        |
| 4        | 15509       | SUCTION/DELIVERY SPRING                          | 2    | X           |               | 4        |
| 5        | 15508       | PUMP SPRING                                      | 1    | X           |               | 5        |
| 6        | BAC005SN000 | Ø5 mm STEEL BALL GRADE 100                       | 2    | X           |               | 6        |
| 7        | SEC014RF001 | O-RING - I.D. 10.82 mm, C.S. 1.78 mm, NITRILE 90 | 2    |             | ✓             | 7        |
| 8        | SEC010RA001 | O-RING - I.D. 6.35 mm, C.S. 1.78 mm, NITRILE 70  | 1    | X           |               | 8        |
| 9        | STC008SA001 | N1305-0031 SELF LOCKING RING                     | 1    | X           |               | 9        |
|          |             |  |      |             |               | 10       |
|          |             |  |      |             |               | 11       |
|          |             |  |      |             |               | 12       |
|          |             |  |      |             |               | 13       |
|          |             |  |      |             |               | 14       |
|          |             |  |      |             |               | 15       |
|          |             |  |      |             |               | 16       |
|          |             |  |      |             |               | 17       |
|          |             |  |      |             |               | 18       |
|          |             |  |      |             |               | 19       |
|          |             |  |      |             |               | 20       |

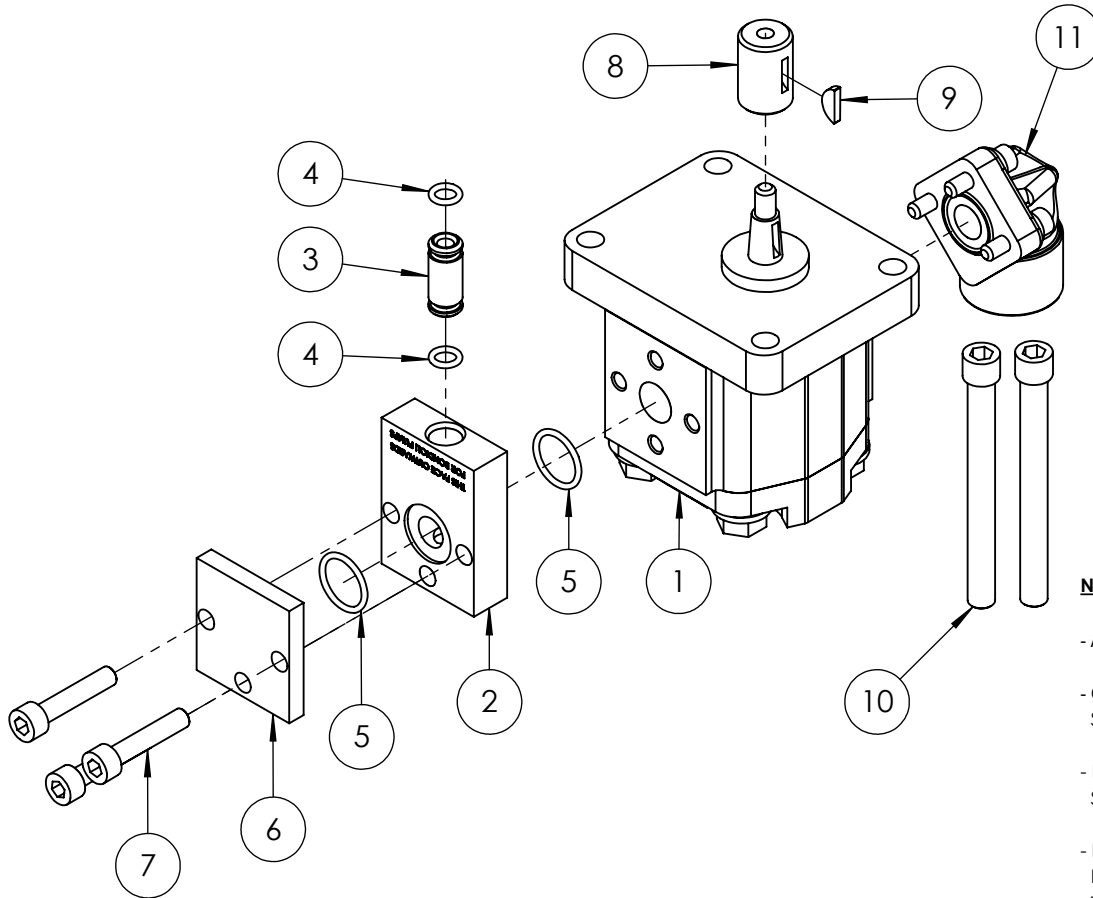
**NOTE:**

- ALL PARTS ARE AVAILABLE TO BE ORDERED AS SPARE PARTS (UNLESS MARKED WITH X).

- ONLY PARTS MARKED WITH ✓ ARE AVAILABLE AS BOTH SPARE PARTS OR SERVICEABLE PARTS, FROM **HEP-SK1 PUMP SERVICE KIT**. (REFER TO HEP-SK1: PUMP SERVICE KIT EVD FOR FULL PARTS LIST).

**IMPORTANT**

WHEN ORDERING SPARES YOU MUST STATE THE FULL PART NUMBER AND THE PRODUCT SERIAL NUMBER - FROM THE LABEL TO PROTECT YOUR WARRANTY ALWAYS USE GENUINE HI-FORCE PARTS.



| ITEM NO. | PART NUMBER | DESCRIPTION  | QTY. | SPARE PARTS | SERVICE PARTS | REVISION |      |
|----------|-------------|--|------|-------------|---------------|----------|------|
|          |             |  |      |             |               |          |      |
| 1        | GP48        | GEAR PUMP  | 1    |             |               | 1        | 5939 |
| 2        | PMC000TM001 | TRANSFER PLATE   | 1    |             |               | 2        | 5983 |
| 3        | 15510A      | CONNECTOR TUBE   | 1    |             |               | 3        |      |
|          | 15510B      | CONNECTOR TUBE   | 1    |             |               | 4        |      |
| 4        | SEC010RA001 | O-RING - I.D. 6.35 mm, C.S. 1.78 mm, NITRILE 70            | 2    |             | ✓             | 5        |      |
| 5        | SEC019RF002 | O-RING - I.D. 15.60, C.S. 1.78mm, NITRILE 90               | 2    |             | ✓             | 6        |      |
| 6        | PMC000XM001 | SEALING PLATE  | 1    |             |               | 7        |      |
| 7        | BLC006JD030 | M6 x 30 mm HEX SOCKET CAP HEAD SCREW                       | 3    |             |               | 8        |      |
| 8        | 15507       | ADAPTOR  | 1    |             |               | 9        |      |
| 9        | PCC002WC001 | KEY TO FIT 200/300 PUMPS                                   | 1    |             |               | 10       |      |
| 10       | FAS008SP080 | M8 X 80 HEX SOCKET REDUCED CAP HEAD SCREW (FULLY THREADED) | 2    |             |               | 11       |      |
| 11       | FPA013DC001 | GEAR PUMP ELBOW (INC WITH GEAR PUMP)                       | 1    | x           |               | 12       |      |

**NOTE:**

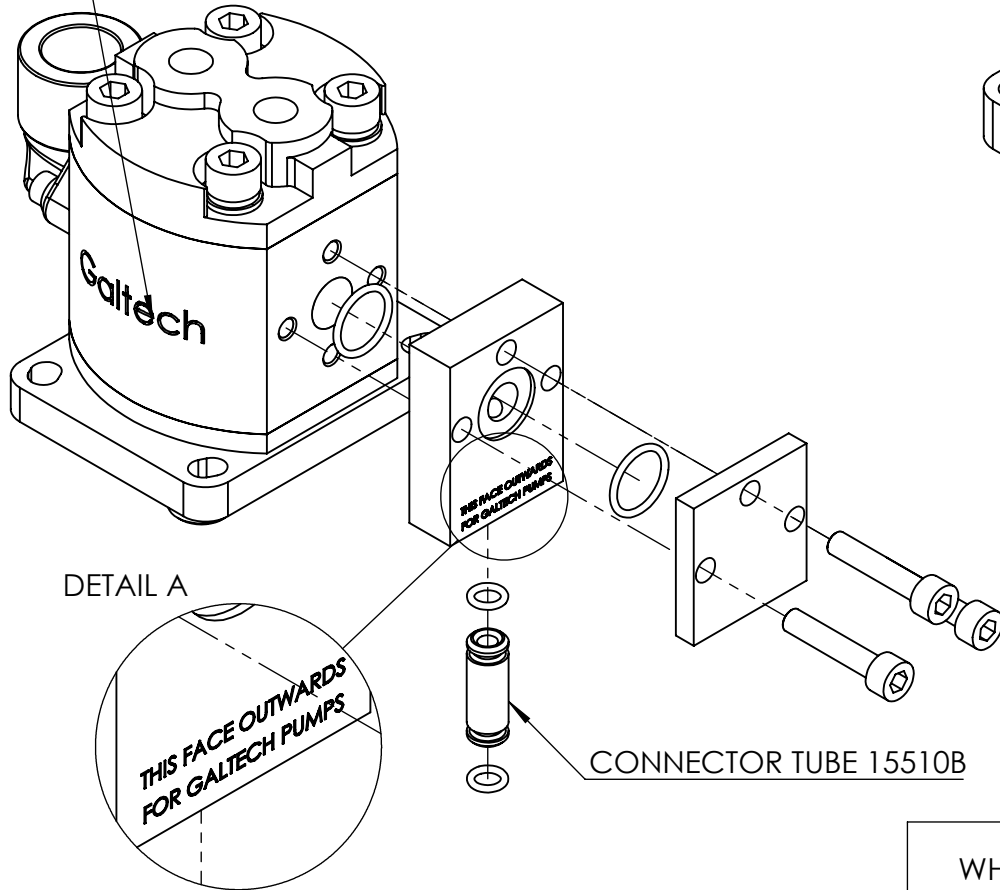
- ALL PARTS ARE AVAILABLE TO BE ORDERED AS SPARE PARTS (UNLESS MARKED WITH x)
- ONLY PARTS MARKED WITH ✓ ARE AVAILABLE AS BOTH SPARE PARTS OR SERVICEABLE PARTS, FROM HEP SK1 PUMP SERVICE KIT. (REFER TO HEP-SK1: PUMP SERVICE KIT EVD FOR FULL PARTS LIST)
- POSITION OF ITEM NO. 2 (PMC000TM001) IS TO BE DETERMINED BY THE BRAND OF THE GP48 GEAR PUMP SUPPLIED (REFER TO SHEET 2 FOR FURTHER DETAILS)
- ITEM NO. 3 USED IS DETERMINED BY THE BRAND OF THE GP48 GEAR PUMP SUPPLIED FOR HEP, HAP AND HPP PUMPS WITH SERIAL NUMBERS EARLIER THAN **BR9070**. FOR BONDIOLI GEAR PUMPS USE CONNECTOR TUBE 15510A AND FOR GALTECH GEAR PUMPS USE CONNECTOR TUBE 15510B (REFER TO SHEET 2 FOR FURTHER DETAILS)
- ITEM NO.10 (FAS008SP080) ARE TO REPLACE TWO SCREWS (BLC008KC080) ON THE TYPE200-24, PRIOR TO FITTING PMA048GZ001 (REFER TO SHEET 3 FOR FURTHER DETAILS)
- INDIVIDUAL ITEMS ARE NOT AVAILABLE AS SPARE PARTS FOR HEP, HAP AND HPP PUMPS WITH SERIAL NUMBERS EARLIER THAN **BR9070**. GP48 GEAR PUMP ASSEMBLY (PMA048GZ001) WILL NEED TO BE ORDERED. INDIVIDUAL ITEMS APART FROM ITEM NO.11 ARE AVAILABLE AS SPARE PARTS FOR HEP, HAP AND HPP PUMPS WITH SERIAL NUMBERS ABOVE **BR9070**

**IMPORTANT**

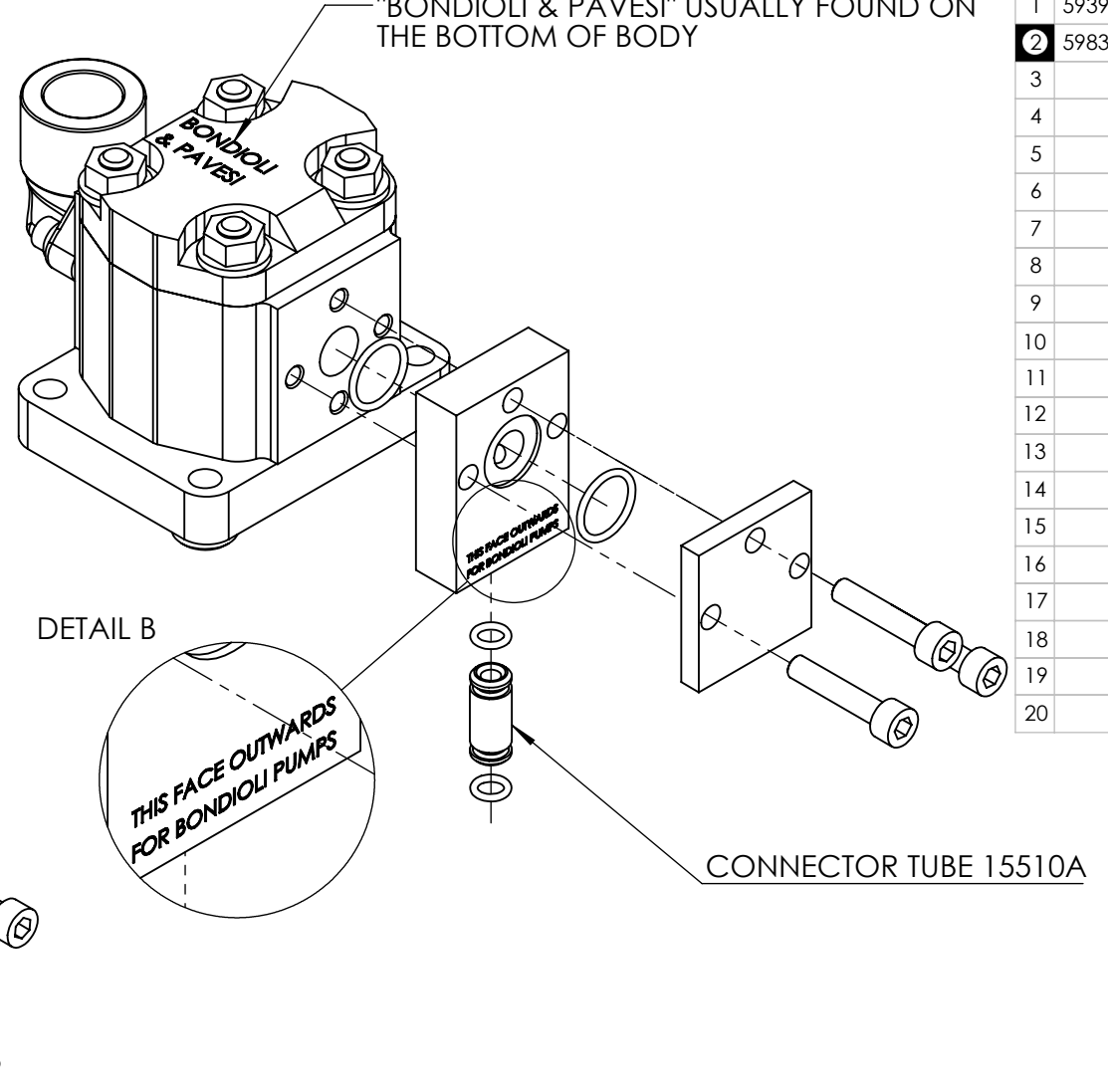
WHEN ORDERING SPARES YOU MUST STATE THE FULL PART NUMBER AND THE PRODUCT SERIAL NUMBER - FROM THE LABEL TO PROTECT YOUR WARRANTY ALWAYS USE GENUINE HI-FORCE PARTS.

**ORIENTATION OF TRANSFER PLATE**

FOR GALTECH GEAR PUMPS, LOOK FOR "GALTECH" USUALLY FOUND ON THE SIDE OF THE BODY



FOR BONDIOLI GEAR PUMPS, LOOK FOR "BONDIOLI & PAVESI" USUALLY FOUND ON THE BOTTOM OF BODY



REVISION

|          |      |
|----------|------|
| 1        | 5939 |
| <b>2</b> | 5983 |
| 3        |      |
| 4        |      |
| 5        |      |
| 6        |      |
| 7        |      |
| 8        |      |
| 9        |      |
| 10       |      |
| 11       |      |
| 12       |      |
| 13       |      |
| 14       |      |
| 15       |      |
| 16       |      |
| 17       |      |
| 18       |      |
| 19       |      |
| 20       |      |

**IMPORTANT**

WHEN ORDERING SPARES YOU MUST STATE THE FULL PART NUMBER AND THE PRODUCT SERIAL NUMBER - FROM THE LABEL TO PROTECT YOUR WARRANTY ALWAYS USE GENUINE HI-FORCE PARTS.

REVISION

1 5939

2 5983

3

4

5

6

7

8

9

10

11

12

13

14

15

16

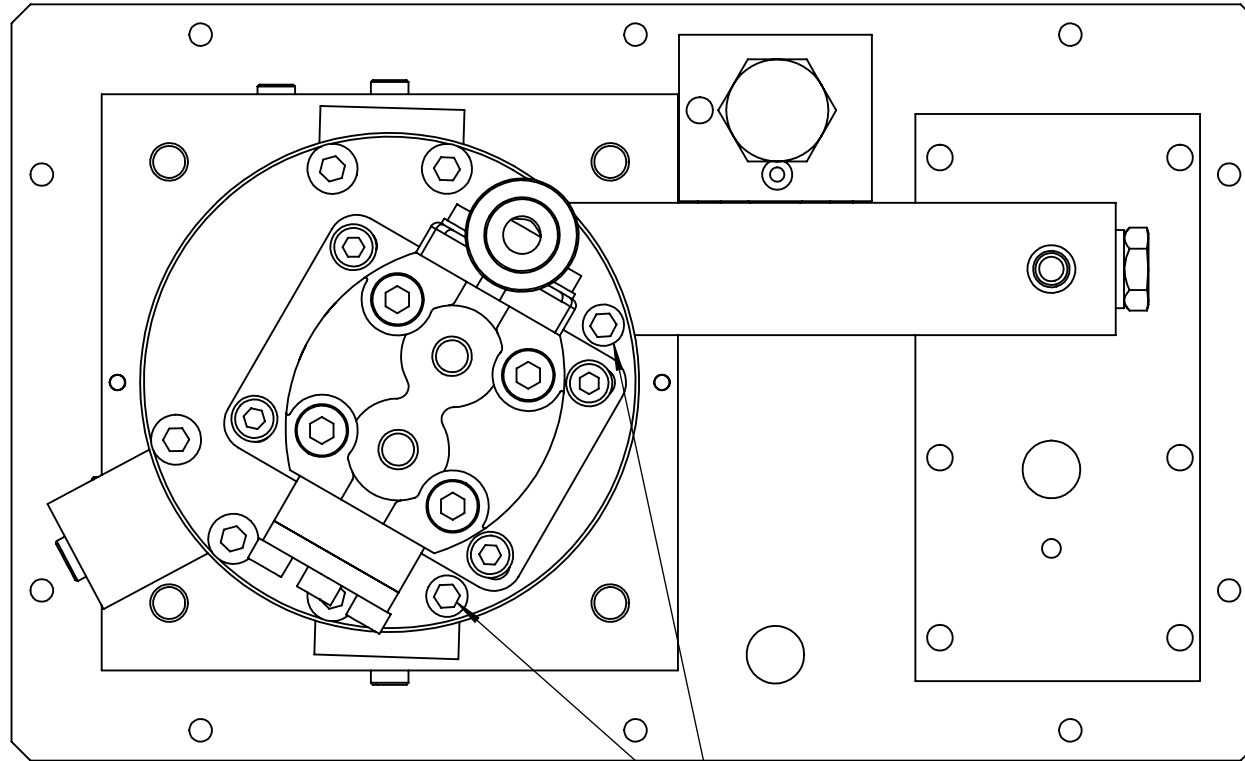
17

18

19

20

**TYPE200-24: BOTTOM VIEW**

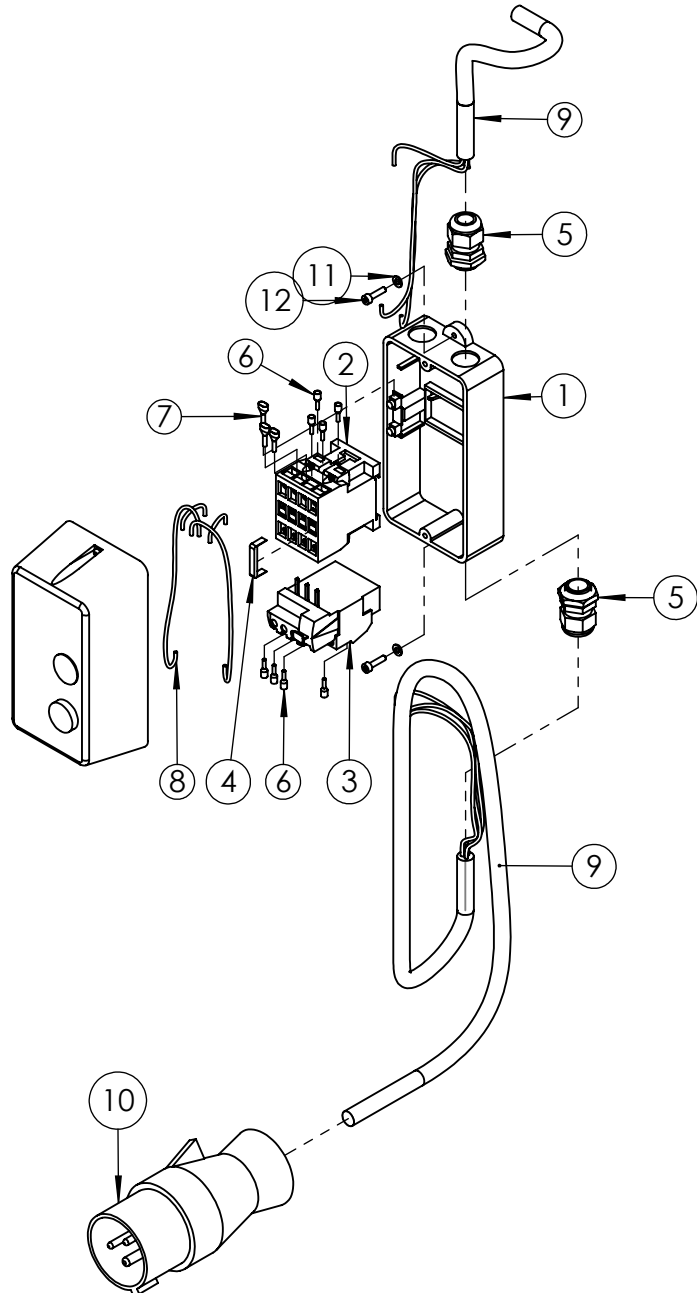


REMOVE THE TWO CURRENT SCREWS FROM THESE TWO POSITIONS AND REPLACE WITH ITEM NO. 10 (FAS008SP080)

**IMPORTANT**

WHEN ORDERING SPARES YOU MUST STATE THE FULL PART NUMBER AND THE PRODUCT SERIAL NUMBER - FROM THE LABEL TO PROTECT YOUR WARRANTY ALWAYS USE GENUINE HI-FORCE PARTS.





| ITEM NO. | PART NUMBER | DESCRIPTION                                    | QTY. | SPARE PARTS | SERVICE PARTS | REVISION |
|----------|-------------|--|------|-------------|---------------|----------|
| 1        | EMC000EF001 | ENCLOSURE WITH PUSH BUTTONS P1MT               | 1    |             |               | 1 5717   |
| 2        | EMC230KE001 | CONTACTOR 230 VOLT                             | 1    |             |               | 2        |
| 3        | EMC230RE001 | OVERLOAD RELAY 8-11 AMPS                       | 1    |             |               | 3        |
| 4        | EMC110XF001 | BRIDGING BAR                                   | 1    |             |               | 4        |
| 5        | NUC020LS002 | GLAND 6-12MM                                   | 2    |             |               | 5        |
| 6        | CEC250SX001 | BOOTLACE FERRULE (INSULATED) 2.5mm GREY        | 8    |             |               | 6        |
| 7        | CEC250SX002 | TWIN BOOTLACE FERRULE 2.5 mm <sup>2</sup>      | 3    |             |               | 7        |
| 8        | CEC250AC000 | SINGLE CORE TR-RATED CABLE 2.5 mm <sup>2</sup> | 1    |             |               | 8        |
| 9        | CEC250CC000 | 3 CORE CABLE 2.5mm <sup>2</sup> H07RN-F3G 2.5  | 2    |             |               | 9        |
| 10       | MCC240EP002 | 240V 16 Amp PLUG                               | 1    |             |               | 10       |
| 11       | WAC004YB000 | M4 WASHER ST                                   | 2    |             |               | 11       |
| 12       | BLC004JD016 | M4 X 16 HEX SOCKET, CAP HEAD SCREW             | 2    |             |               | 12       |
|          |             |  |      |             |               | 13       |
|          |             |  |      |             |               | 14       |
|          |             |  |      |             |               | 15       |
|          |             |  |      |             |               | 16       |
|          |             |  |      |             |               | 17       |
|          |             |  |      |             |               | 18       |
|          |             |  |      |             |               | 19       |
|          |             |  |      |             |               | 20       |

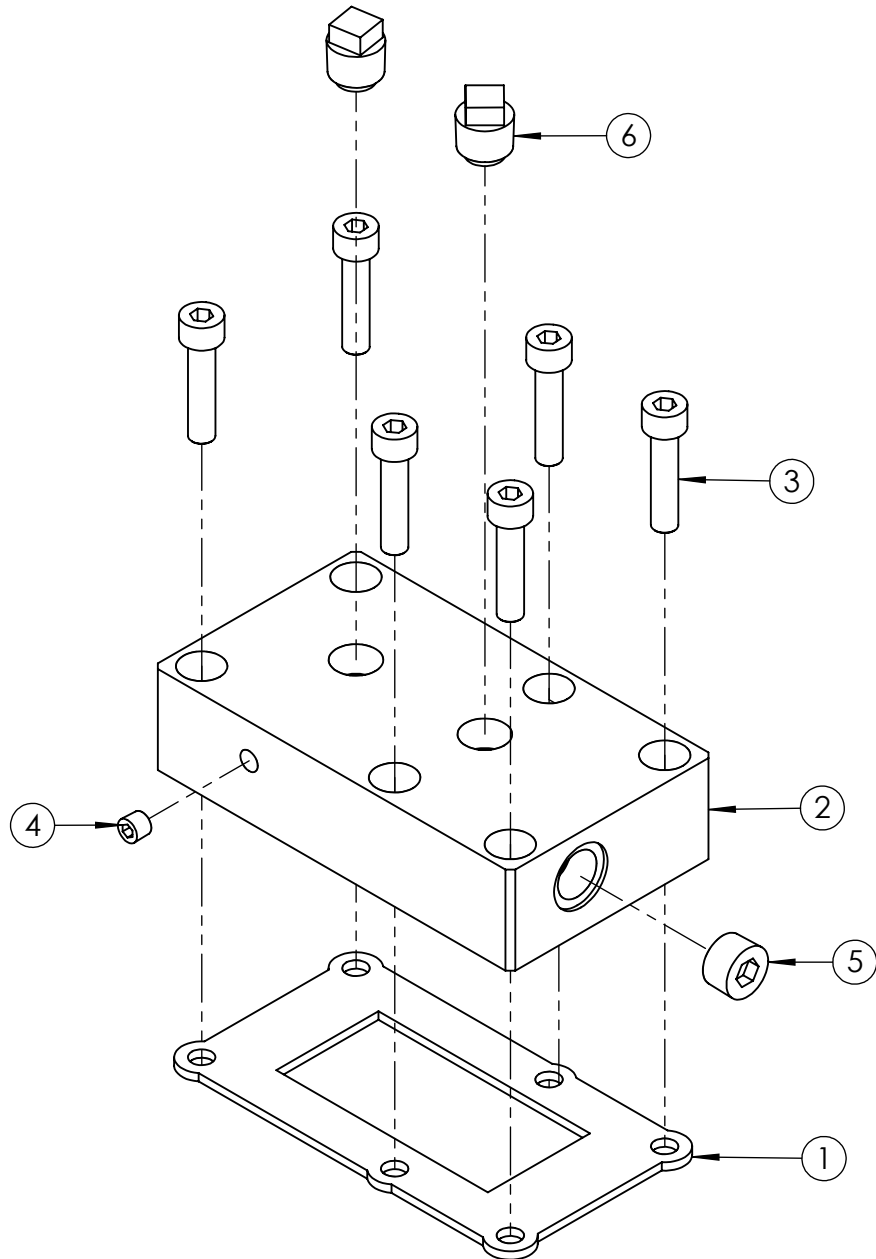
**NOTE:**

- ALL PARTS ARE AVAILABLE TO BE ORDERED AS SPARE PARTS (UNLESS MARKED WITH X).

**IMPORTANT**

WHEN ORDERING SPARES YOU MUST STATE THE FULL PART NUMBER AND THE PRODUCT SERIAL NUMBER - FROM THE LABEL TO PROTECT YOUR WARRANTY ALWAYS USE GENUINE HI-FORCE PARTS.

| ITEM NO. | PART NUMBER | DESCRIPTION                          | QTY. | SPARE PARTS | REVISION |
|----------|-------------|--------------------------------------|------|-------------|----------|
| 1        | SEC003KT001 | VALVE GASKET                         | 1    |             | 1 5717   |
| 2        | VFC010BF010 | CONNECTOR PLATE                      | 1    |             | 2        |
| 3        | BLC008KD035 | M8 x 35 mm HEX SOCKET CAP HEAD SCREW | 6    |             | 3        |
| 4        | FPC002PN001 | 1/16" x 7/8" NPT SOCKET PLUG         | 1    |             | 4        |
| 5        | FPC010PN002 | 3/8" X 7/8" NPT SOCKET PLUG          | 1    |             | 5        |
| 6        | BPC010SP004 | 3/8 NPT PLASTIC BLANKING PLUG (RED)  | 2    |             | 6        |
|          |             |                                      |      |             | 7        |
|          |             |                                      |      |             | 8        |
|          |             |                                      |      |             | 9        |
|          |             |                                      |      |             | 10       |
|          |             |                                      |      |             | 11       |
|          |             |                                      |      |             | 12       |
|          |             |                                      |      |             | 13       |
|          |             |                                      |      |             | 14       |
|          |             |                                      |      |             | 15       |
|          |             |                                      |      |             | 16       |
|          |             |                                      |      |             | 17       |
|          |             |                                      |      |             | 18       |
|          |             |                                      |      |             | 19       |
|          |             |                                      |      |             | 20       |

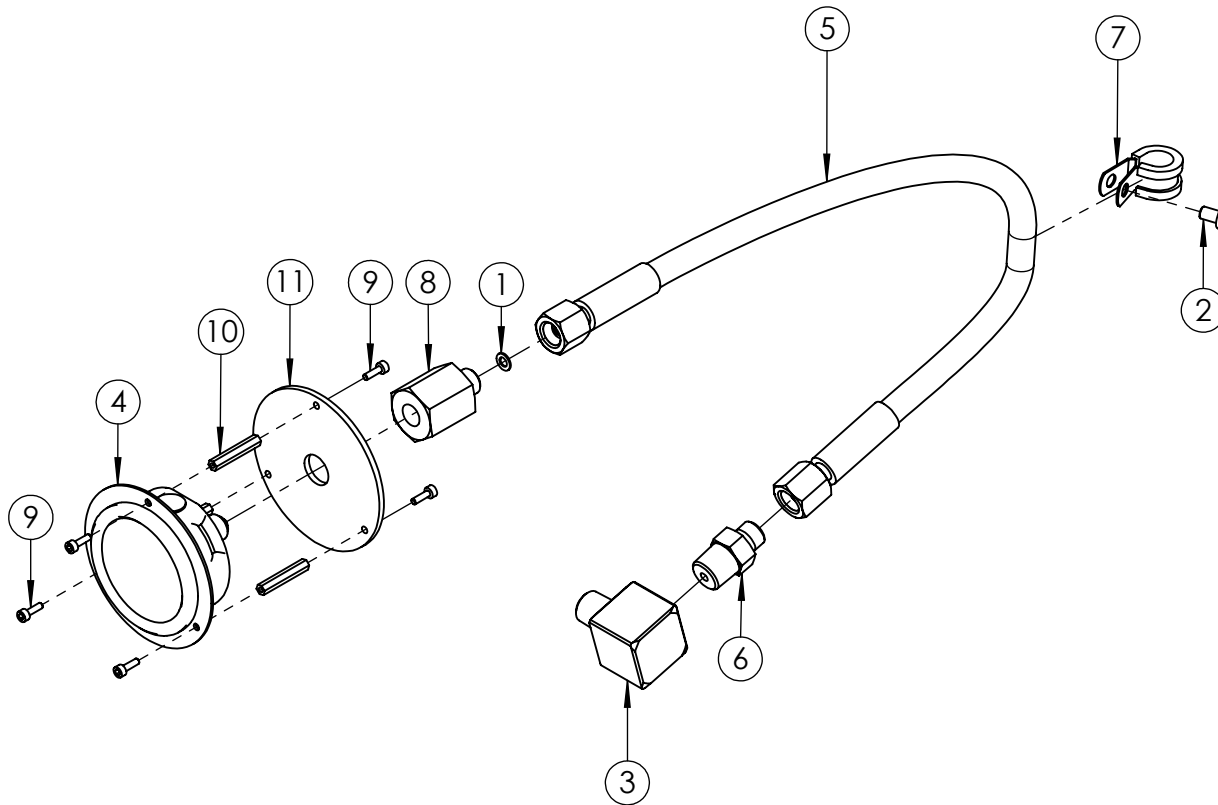


**NOTE:**

- ALL PARTS ARE AVAILABLE TO BE ORDERED AS SPARE PARTS (UNLESS MARKED WITH **X**).

**IMPORTANT**

WHEN ORDERING SPARES YOU MUST STATE THE FULL PART NUMBER AND THE PRODUCT SERIAL NUMBER - FROM THE LABEL TO PROTECT YOUR WARRANTY ALWAYS USE GENUINE HI-FORCE PARTS.



| ITEM NO. | PART NUMBER | DESCRIPTION   | QTY. | SPARE PARTS | REVISION |
|----------|-------------|---|------|-------------|----------|
| 1        | WAC005EC001 | M5 X 9 X 1.0 COPPER SEALING WASHER                                    | 1    |             | 1 5717   |
| 2        | BLC006JH010 | M6 X 10 mm, HEX SOCKET, BUTTON HEAD SCREW                             | 1    |             | 2        |
| 3        | HF16        | ELBOW, 3/8" NPT FEMALE TO 3/8" NPT MALE                               | 1    |             | 3        |
| 4        | PGB063PF001 | FLANGE MOUNTED 700 Bar PRESSURE GAUGE                                 | 1    |             | 4        |
| 5        | HOC006GB001 | 700 Bar GAUGE HOSE WITH 1/4" BSP CONE FEMALE FITTINGS                 | 1    |             | 5        |
| 6        | FPC010BN008 | M/M ADAPTOR 3/8 NPT x 1/4 BSP INT 60° CONE 1000 Bar (STAINLESS STEEL) | 1    |             | 6        |
| 7        | ANC013PC001 | 13mm BLACK STAINLESS STEEL P CLIP                                     | 1    |             | 7        |
| 8        | FPC006BB002 | 700 Bar SS 1/4" BSPP x BSPP FIXED FEMALE GAUGE ADAPTOR                | 1    |             | 8        |
| 9        | BLC003ZD010 | M3 X 10 mm HEX SOCKET CAP HEAD SCREW                                  | 6    |             | 9        |
| 10       | NUC003UK001 | M3 FEMALE STEEL HEX STANDOFF 30mm LONG                                | 3    |             | 10       |
| 11       | SFC085HA001 | STRAIN RELIEF PLATE   | 1    |             | 11       |

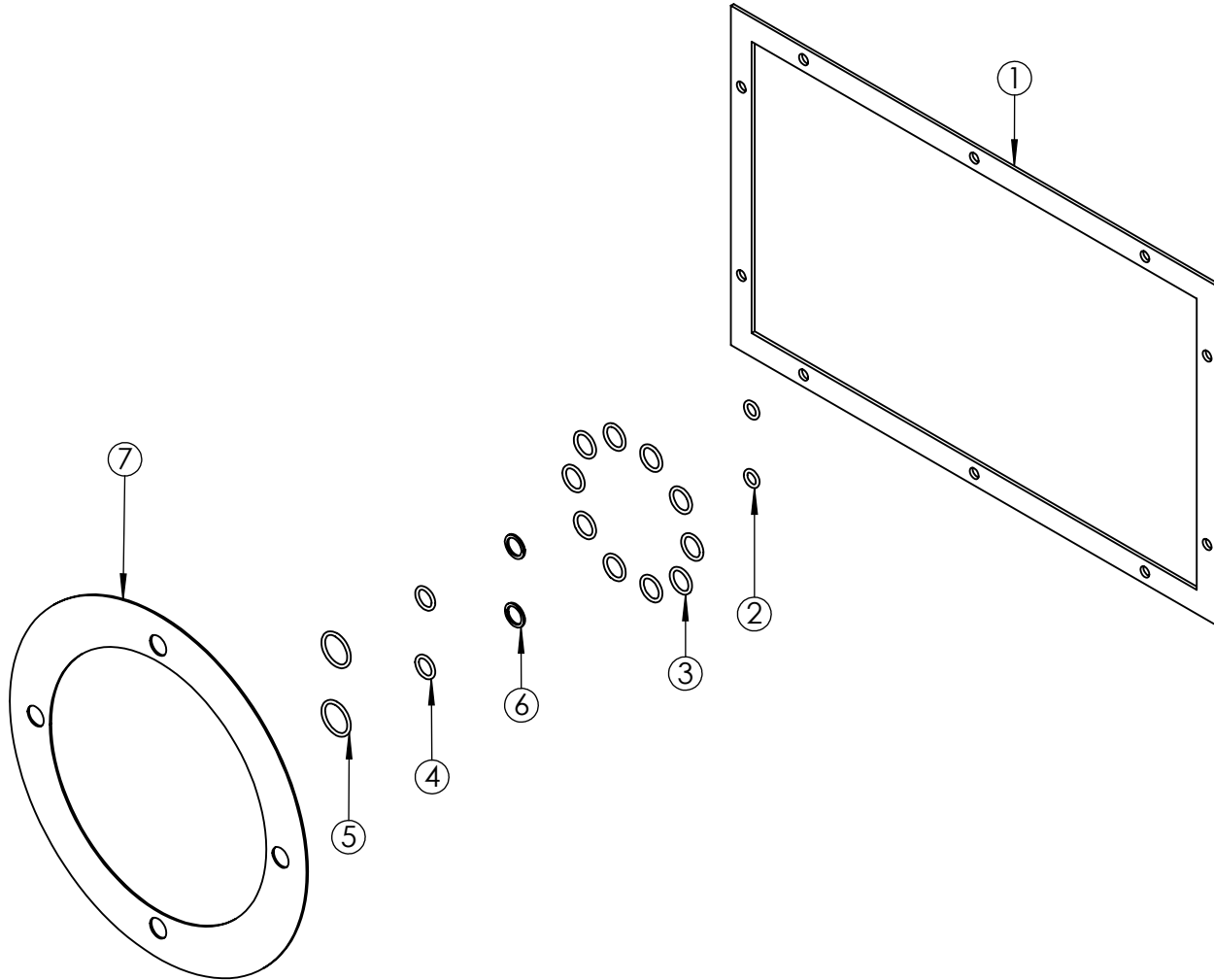
**NOTE:**

- ALL PARTS ARE AVAILABLE TO BE ORDERED AS SPARE PARTS (UNLESS MARKED WITH X).

**IMPORTANT**

WHEN ORDERING SPARES YOU MUST STATE THE FULL PART NUMBER AND THE PRODUCT SERIAL NUMBER - FROM THE LABEL TO PROTECT YOUR WARRANTY ALWAYS USE GENUINE HI-FORCE PARTS.

| ITEM NO. | PART NUMBER | DESCRIPTION                                      | QTY. | REVISION |
|----------|-------------|--|------|----------|
| 1        | 15482       | TANK GASKET                                      | 1    | 1 5717   |
| 2        | SEC010RA001 | O-RING - I.D. 6.35 mm, C.S. 1.78 mm, NITRILE 70  | 2    | 2 5939   |
| 3        | SEC014RF001 | O-RING - I.D. 10.82 mm, C.S. 1.78 mm, NITRILE 90 | 10   | 3        |
| 4        | SEC013RA001 | O-RING - I.D. 9.25mm, C.S. 1.78mm, NITRILE 90    | 2    | 4        |
| 5        | SEC019RF002 | O-RING - I.D. 15.60, C.S. 1.78mm, NITRILE 90     | 2    | 5        |
| 6        | SEC013BA001 | BACK-UP RING - PTFE, SOLID SPLIT                 | 2    | 6        |
| 7        | SEC001KT003 | GASKET   | 1    | 7        |
|          |             |  |      | 8        |
|          |             |  |      | 9        |
|          |             |  |      | 10       |
|          |             |  |      | 11       |
|          |             |  |      | 12       |
|          |             |  |      | 13       |
|          |             |  |      | 14       |
|          |             |  |      | 15       |
|          |             |  |      | 16       |
|          |             |  |      | 17       |
|          |             |  |      | 18       |
|          |             |  |      | 19       |
|          |             |  |      | 20       |



**IMPORTANT**

WHEN ORDERING SPARES YOU MUST STATE THE FULL PART NUMBER AND THE PRODUCT SERIAL NUMBER - FROM THE LABEL TO PROTECT YOUR WARRANTY ALWAYS USE GENUINE HI-FORCE PARTS.