

ITEM NO.	PART NUMBER	DESCRIPTION	QTY.	SERVICE PARTS	SPARE PARTS
1	NSC020AA001	NS110 BODY ASSY	1		X
2	NSC020LA003	LINKAGE	1		
3	NS110-B	BLADE	1		
4	NSC020FA003	BLADE BACK	1		
5	NSC020GA001	GUIDE SCREW	1		
6	BLC004HC030	M4 X 30 SOCKET CAP HD SCREW	1		
7	SPC051CC003	COMPRESSION SPRING	1		
8	NSC020KA002	KEY	1		
9	<b>HMNS110-P</b>	PUMP ASSEMBLY	1		X
10	SEC067GA001	PISTON T SEAL OD. 66.73 mm, ID. 54.73 mm, H. 7 mm, NBR/NYLON 70 SHORE	1	✓	
11	FAS010MA010	M10 X 10 CUP POINT GRUB SCREW	1		
12	FAS006ME006	M6 X 6 CUP POINT GRUB SCREW	1		
13	PRC067ZC001	PISTON HEAD	1		X
14	PRC067XE001	PISTON	1		X
15	SIC052TB001	SPRING SEAT	1		
16	BLC004HC032	M4 X 32 SOCKET CAP HD SCREW	1		

NOTE:

- ALL PARTS AVAILABLE TO BE ORDERED AS SPARE PARTS (UNLESS MARKED WITH X).
- FOR SUB ASSEMBLIES (ITEM NO 9) PLEASE REFER TO THEIR INDIVIDUAL EVD'S.

**IMPORTANT**  
WHEN ORDERING SPARES YOU MUST STATE THE FULL PART NUMBER AND THE PRODUCT SERIAL NUMBER - FROM THE LABEL TO PROTECT YOUR WARRANTY ALWAYS USE GENUINE HI-FORCE PARTS.

1	
2	6327
3	
4	
5	
6	
7	
8	
9	
10	
11	
12	
13	
14	
15	
16	
17	
18	
19	
20	

REVISION

1 6327

2

3

4

5

6

7

8

9

10

11

12

13

14

15

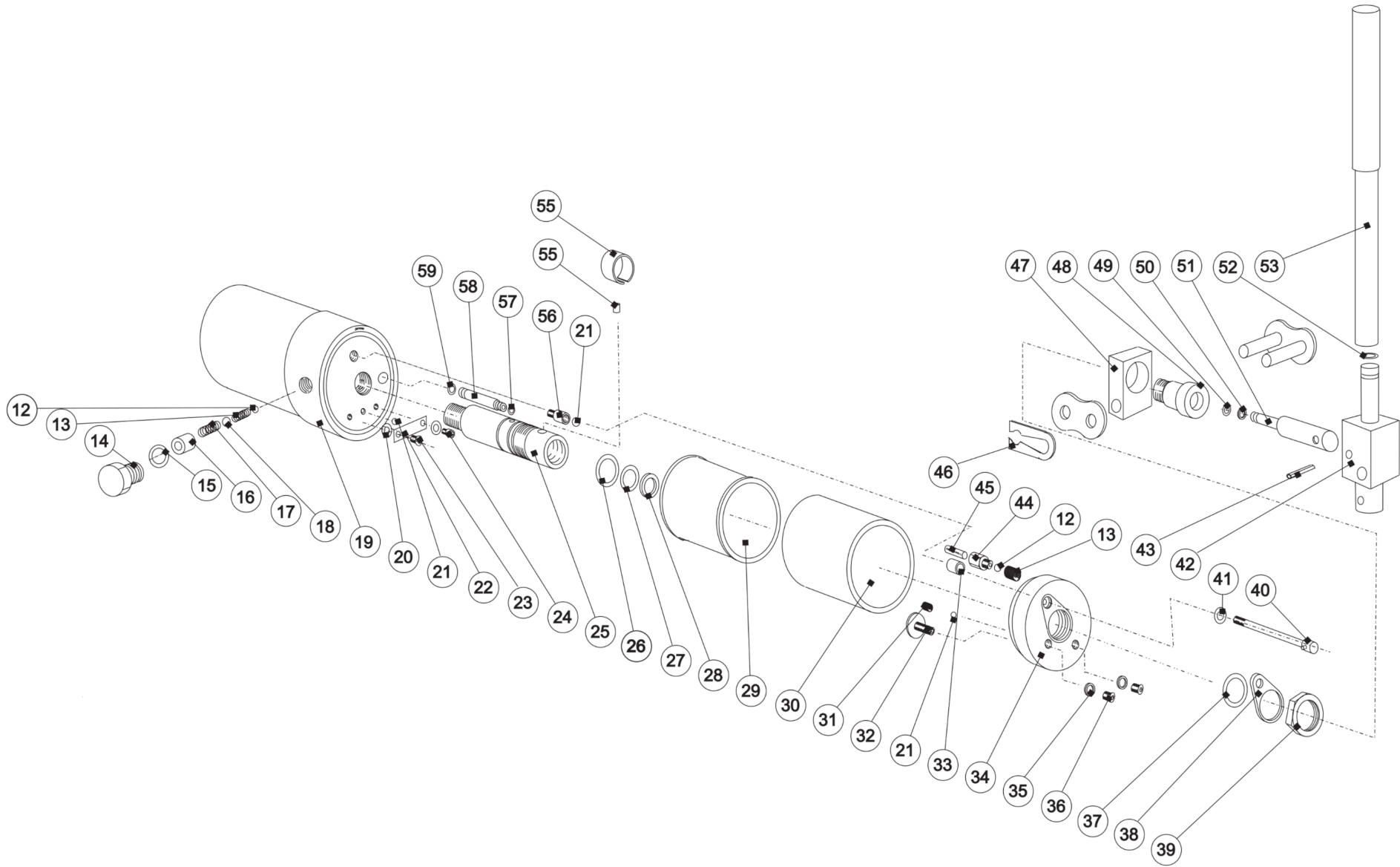
16

17

18

19

20



**IMPORTANT**

WHEN ORDERING SPARES YOU MUST STATE THE FULL PART NUMBER AND THE PRODUCT SERIAL NUMBER - FROM THE LABEL TO PROTECT YOUR WARRANTY ALWAYS USE GENUINE HI-FORCE PARTS.

REVISION

ITEM	PART NUMBER	DESCRIPTION	NO.
12*	902001100	Ball	2
13*	045008100	Compression spring	2
14	351002800	Hexagon Plug	1
15*	901600200	Bonded Washer	1
16	360001800	Spacer	1
17*	007007100	Compression spring	1
18*	902000900	Ball	1
19	355000800	Body assy	1
20*	904101500	Plain washer	3
21*	902001300	Ball	2
22*	079005300	Flexure	1
23*	904003600	Socket button screw	1
24*	904007500	Socket cap screw	1
25	360000600	Barrel	1
26*	901324100	Quad ring	1
27*	901306800	O ring	1
28*	901403700	Solid back up ring	1
29*	079008400	Bellows	1
30	079008200	Reservoir	1
31*	088012100	Compression spring	1
32	079011700	Adjusting screw	1
33	079006400	Sleeve	1
34	360000700	End cap	1
35*	901601000	Bonded Washer	1

ITEM	PART NUMBER	DESCRIPTION	NO.
36	904003700	Button screw	1
37*	901323300	O ring	1
38	360000800	Lock washer	1
39	360001100	Lock nut	1
40	163000600	Release screw	1
41*	901307100	O ring	1
42	079001400	Clevis	1
43	907001700	Spring pin	1
44	079010800	Inlet body	1
45	107013300	Filter mesh	1
46	907102200	Link	1
47	079002200	Pivot	1
48	089001200	Bearing	1
49*	901324000	O ring	1
50*	901403500	Back up ring	1
51	079010600	Piston Rod	1
52*	901307100	O ring	1
53	079004100	Handle c/w grip	1
54	905001000	Clip	1
55	079006800	Dowel	1
56	079002800	Release Body	1
57*	901309700	O ring	1
58	079010700	Connector tube	1
59*	901306500	O ring	1

1	6327
2	
3	
4	
5	
6	
7	
8	
9	
10	
11	
12	
13	
14	
15	
16	
17	
18	
19	
20	

\* INDICATES PARTS IN SERVICE KIT HMNS110TP1-K

**IMPORTANT**

WHEN ORDERING SPARES YOU MUST STATE THE FULL PART NUMBER AND THE PRODUCT SERIAL NUMBER - FROM THE LABEL TO PROTECT YOUR WARRANTY ALWAYS USE GENUINE HI-FORCE PARTS.