

REVISION

1	
2	6271
3	
4	
5	
6	
7	
8	
9	
10	
11	
12	
13	
14	
15	
16	
17	
18	
19	
20	

IMPORTANT

WHEN ORDERING SPARES YOU MUST STATE THE FULL PART NUMBER AND THE
PRODUCT SERIAL NUMBER - FROM THE LABEL
TO PROTECT YOUR WARRANTY ALWAYS USE GENUINE HI-FORCE PARTS

MANUALLY OPERATED PUMP

SERIAL NUMBERS

FROM DT0642

PRODUCT NO.

HP212

 SHT 1 OF
1 SHTS

ITEM NO.	PART NO.	DESCRIPTION	QTY.	SPARE PARTS	SERVICE PARTS
01	HP212-01	Pump Housing	1		
02	-	Oil Filter	1	x	✓
03	-	Ring	2	x	✓
04	HP212-04	Tie Rod	1		
05	HP212-05	Reservoir	1		
06	HP212-06	Tail Base	1		
07	-	O-Ring	1	x	✓
08	-	Hook Ring	1	x	✓
09	-	Fixing Hook	1	x	✓
10	-	Brass Washer	1	x	✓
11	-	Nut	1	x	✓
12	-	O-Ring	1	x	✓
13	-	Air Release Screw	1	x	✓
14	-	Vent Screw	1	x	✓
15	-	Steel Ball	2	x	✓
16	-	Screw	3	x	✓
17	-	O-Ring	1	x	✓
18	-	Back-Up Ring	1	x	✓
19	HP227-17	Pump Piston	1		
20	-	Snap Ring	1	x	✓
21	-	O-Ring	1	x	✓
22	-	Back-Up Ring	1	x	✓
23	HP227-21	Pump Piston	1		
24	HP232-23	Yoke	1		
25	-	Yoke Pin	1	x	✓
26	-	Piston Pin	1	x	✓
27	-	Retaining Ring	3	x	✓
28	HP232-24	Handle	1		
29	-	Handle Grip	1	x	✓
30	-	Screw	2	x	✓
31	HP232-26	Yoke Base	1		
32	-	Roll Pin	1	x	✓
33	-	Oil Seal	1	x	✓

ITEM NO.	PART NO.	DESCRIPTION	QTY.	SPARE PARTS	SERVICE PARTS
34	-	Washer	1	x	✓
35	RV	Release Nut	1	x	
36	RV	Release Valve Screw	1	x	
37	RV	Pin	1	x	
38	RV	Release Knob	1	x	
39	RV	Knob Screw	1	x	
40	-	Steel Ball	2	x	✓
41	-	Spring	2	x	✓
42	-	Steel Ball	2	x	✓
43	-	Spring	2	x	✓
44	-	Screw	2	x	✓
45	-	Steel Ball	2	x	✓
46	-	Spring End Cap	2	x	✓
47	-	Short Separator Spring	1	x	✓
48	-	Overload Cover Spring	1	x	✓
49	-	O-Ring	2	x	✓
50	-	Overload Cover Screw	2	x	✓
51	-	Cap	2	x	✓
52	HP211-52	Release Valve Assy	1		

REVISION

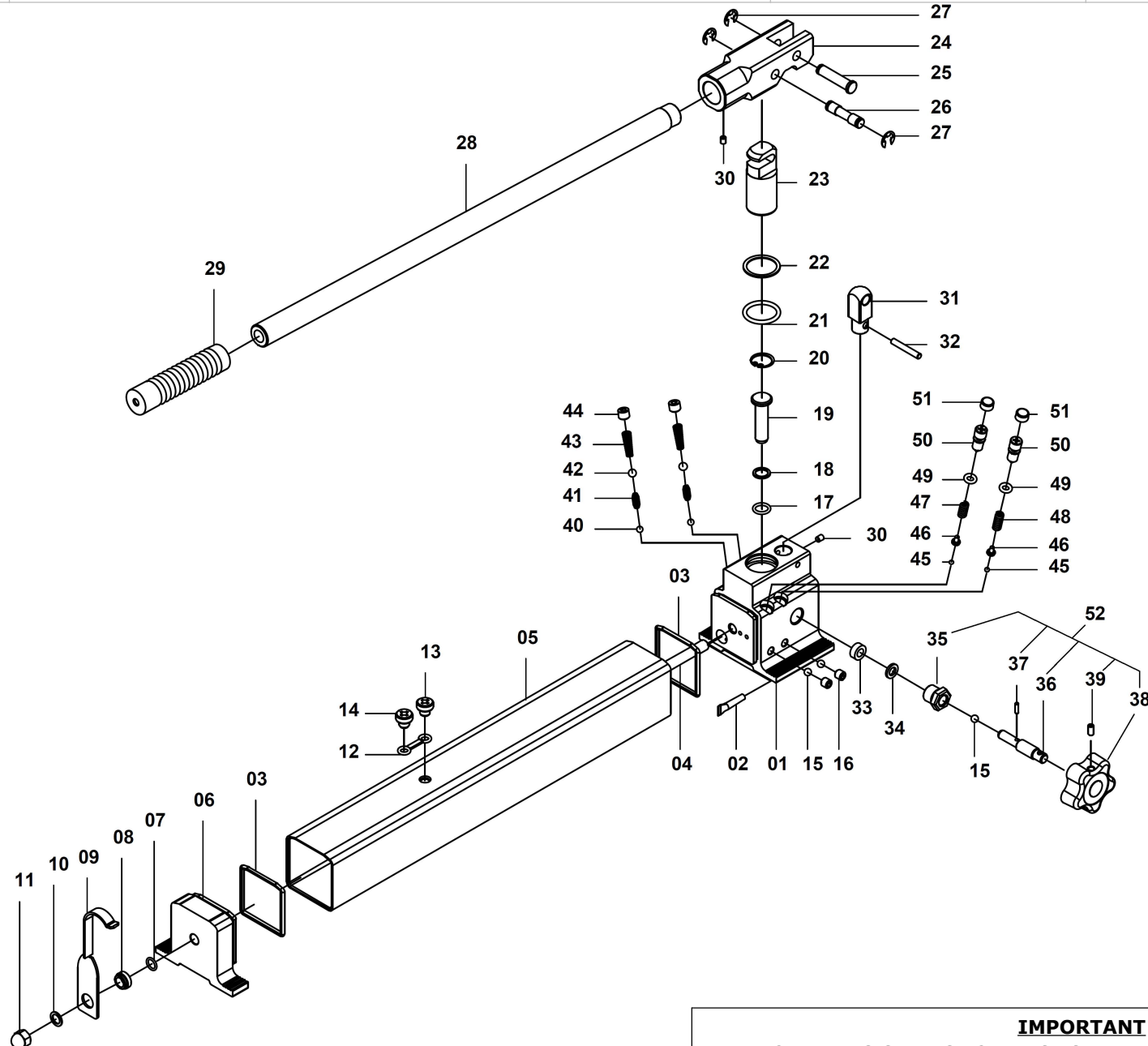
1	
2	6271
3	
4	
5	
6	
7	
8	
9	
10	
11	
12	
13	
14	
15	
16	
17	
18	
19	
20	

NOTE:

- ALL PARTS ARE AVAILABLE TO BE ORDERED AS SPARE PARTS (UNLESS MARKED WITH x).
- PARTS MARKED WITH ✓ ARE AVAILABLE AS SERVICEABLE PARTS, FROM HP212TP1-K ONLY.
- ALL PART No.s MARKED AS "RV" ONLY AVAILABLE AS RELEASE VALVE ASSEMBLY (ITEM No. 52)

IMPORTANT

WHEN ORDERING SPARES YOU MUST STATE THE FULL PART NUMBER AND THE PRODUCT SERIAL NUMBER - FROM THE LABEL
TO PROTECT YOUR WARRANTY ALWAYS USE GENUINE HI-FORCE PARTS



REVISION

1

2

3

4

5

6

7

8

9

10

11

12

13

14

15

16

17

18

19

20

IMPORTANT

WHEN ORDERING SPARES YOU MUST STATE THE FULL PART NUMBER AND THE
PRODUCT SERIAL NUMBER - FROM THE LABEL
TO PROTECT YOUR WARRANTY ALWAYS USE GENUINE HI-FORCE PARTS

MANUALLY OPERATED PUMP

SERIAL NUMBERS

UPTO DT0641

PRODUCT NO.

HP212

 SHT 1 OF
1 SHTS

ITEM NO.	PART NO.	DESCRIPTION	QTY.	SPARE PARTS	SERVICE PARTS
01	HP212-01	Pump Housing	1		
02	-	Oil Filter	1	x	✓
03	-	Ring	2	x	✓
04	HP212-04	Tie Rod	1		
05	HP212-05	Reservoir	1		
06	HP212-06	Tail Base	1		
07	-	O-Ring	1	x	✓
08	-	Hook Ring	1	x	✓
09	-	Fixing Hook	1	x	✓
10	-	Brass Washer	1	x	✓
11	-	Nut	1	x	✓
12	-	O-Ring	1	x	✓
13	-	Air Release Screw	1	x	✓
14	-	Vent Screw	1	x	✓
15	RV	Steel Ball	3	x	✓
16	-	Screw	3	x	✓
17	-	O-Ring	1	x	✓
18	-	Back-Up Ring	1	x	✓
19	HP227-17	Pump Piston	1		
20	-	Snap Ring	1	x	✓
21	-	O-Ring	1	x	✓
22	-	Back-Up Ring	1	x	✓
23	HP227-21	Pump Piston	1		
24	HP232-23	Yoke	1		
25	-	Yoke Pin	1	x	✓
26	-	Piston Pin	1	x	✓
27	-	Retaining Ring	3	x	✓
28	HP232-24	Handle	1		
29	-	Handle Grip	1	x	✓
30	-	Screw	2	x	✓
31	HP232-26	Yoke Base	1		
32	-	Roll Pin	1	x	✓
33	-	Oil Seal	1	x	✓

ITEM NO.	PART NO.	DESCRIPTION	QTY.	SPARE PARTS	SERVICE PARTS
34	-	Washer	1	x	✓
35	RV	Release Nut	1	x	
36	RV	Release Valve Screw	1	x	
37	RV	Pin	1	x	
38	RV	Release Knob	1	x	
39	RV	Knob Screw	1	x	
40	-	Steel Ball	2	x	✓
41	-	Spring	2	x	✓
42	-	Steel Ball	2	x	✓
43	-	Spring	2	x	✓
44	-	Screw	2	x	✓
45	-	Steel Ball	2	x	✓
46	-	Spring End Cap	2	x	✓
47	-	Short Separator Spring	1	x	✓
48	-	Overload Cover Spring	1	x	✓
49	-	O-Ring	2	x	✓
50	-	Overload Cover Screw	2	x	✓
51	-	Cap	2	x	✓
52	HP211-52	Release Valve Assy	1		

REVISION

1

2

3

4

5

6

7

8

9

10

11

12

13

14

15

16

17

18

19

20

NOTE:

- ALL PARTS ARE AVAILABLE TO BE ORDERED AS SPARE PARTS (UNLESS MARKED WITH x).
- PARTS MARKED WITH ✓ ARE AVAILABLE AS SERVICEABLE PARTS, FROM HP212TP1-K ONLY.
- ALL PART NO.s MARKED AS "RV" ONLY AVAILABLE AS RELEASE VALVE ASSEMBLY (ITEM NO. 52)
- WHEN CHANGING ITEM NO. 52 - HP211-52, ITEM NO. 15 - STEEL BALL TO BE REMOVED.

IMPORTANT

WHEN ORDERING SPARES YOU MUST STATE THE FULL PART NUMBER AND THE PRODUCT SERIAL NUMBER - FROM THE LABEL
TO PROTECT YOUR WARRANTY ALWAYS USE GENUINE HI-FORCE PARTS