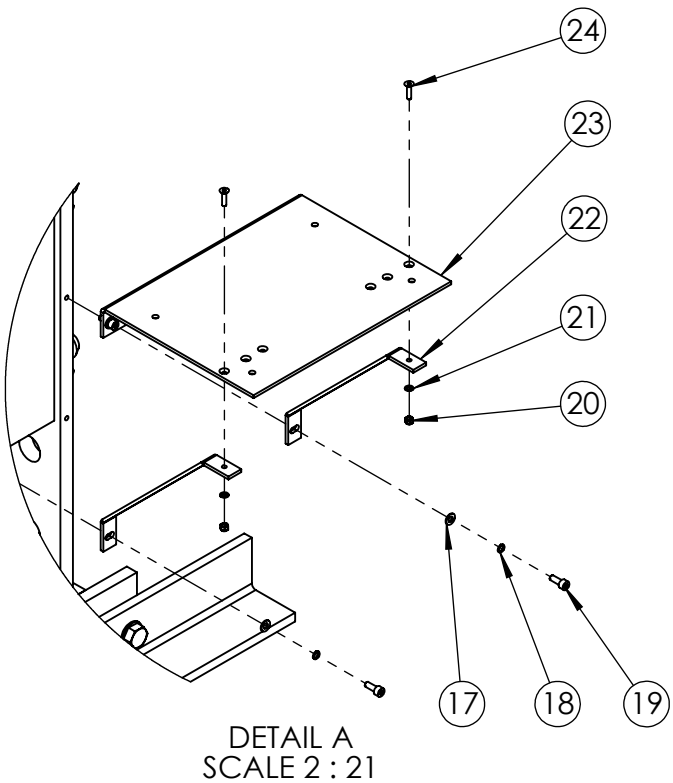
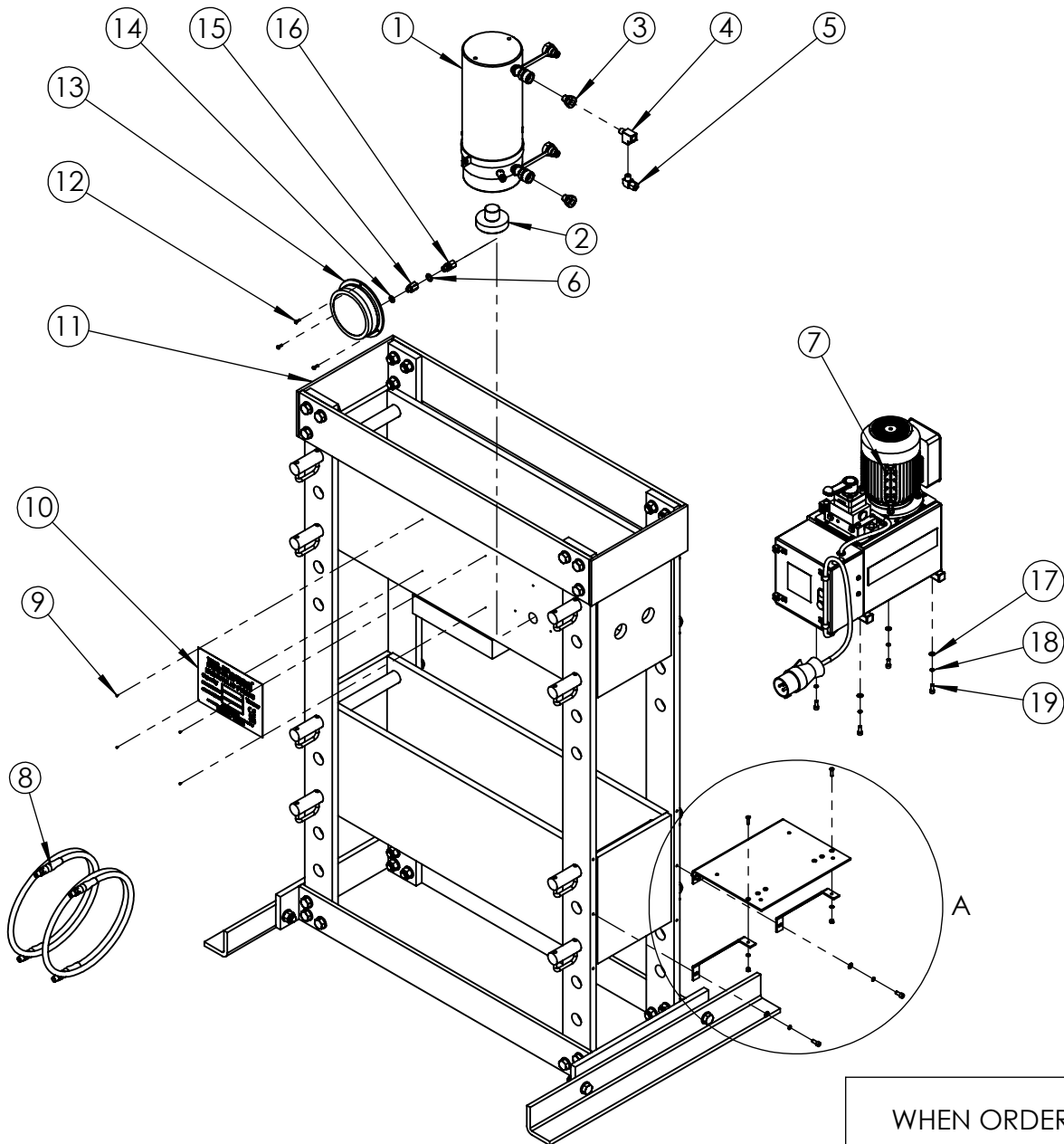


REVISION

| | |
|----|------|
| 1 | 6088 |
| 2 | 6180 |
| 3 | |
| 4 | |
| 5 | |
| 6 | |
| 7 | |
| 8 | |
| 9 | |
| 10 | |
| 11 | |
| 12 | |
| 13 | |
| 14 | |
| 15 | |
| 16 | |
| 17 | |
| 18 | |
| 19 | |
| 20 | |



IMPORTANT

WHEN ORDERING SPARES YOU MUST STATE THE FULL PART NUMBER AND THE
PRODUCT SERIAL NUMBER - FROM THE LABEL
TO PROTECT YOUR WARRANTY ALWAYS USE GENUINE HI-FORCE PARTS.

REVISION

1 6088

2 6180

3

4

5

6

7

8

9

10

11

12

13

14

15

16

17

18

19

20

| ITEM NO. | PART NUMBER | DESCRIPTION | QTY. | SPARE PART AVAILABILITY | ITEM NO. | PART NUMBER | DESCRIPTION | QTY. | SPARE PART AVAILABILITY |
|----------|-------------|---|------|-------------------------|----------|-------------|---------------------------------------|------|-------------------------|
| 1 | HDA10013 | DOUBLE ACTING CYLINDER HDA10013 | 1 | | 13 | HFPG-100T | PRESSURE GAUGE | 1 | |
| 2 | SAC045MT002 | SADDLE | 1 | | 14 | WAC007HD000 | 1/4" BSP SELF CENTERING BONDED WASHER | 1 | |
| 3 | CM1 | MALE COUPLER | 2 | | 15 | FPC010BB002 | M/F ADAPTER 1/4 IN. BSP X 3/8 IN. BSP | 1 | |
| 4 | HF31 | 3/8" NPT TEE | 1 | | 16 | FPC010YB001 | STUD COUPLING | 1 | |
| 5 | FPC010DN001 | MALE STUD ELBOW | 1 | | 17 | WAC008AB000 | M8 PLAIN WASHER | 8 | |
| 6 | WAC010HD000 | 3/8" BSP DOWTY WASHER | 1 | | 18 | WAC008BB000 | M8 ZINC PLATED SPRING WASHER | 8 | |
| 7 | HPF207412H | 220V 60hz, TWO STAGE, ELECTRIC DRIVEN, MEDIUM FLOW PUMP | 1 | | 19 | BLC008KD020 | M8 x 20 mm HEX SOCKET CAP HEAD SCREW | 8 | |
| 8 | HH2 | HYDRAULIC HOSE 2M. | 2 | | 20 | NUC006JC000 | M6 NYLOK NUT | 2 | |
| 9 | FAS002HZ001 | NO.4 x 3/16 HAMMER DRIVE SCREW | 4 | | 21 | WAC006AF000 | M6 ZINC WASHER | 2 | |
| 10 | AAN100FP001 | NAMEPLATE | 1 | X | 22 | SFC020HC001 | HPF SHELF SUPPORT | 2 | |
| 11 | PAA100HG001 | 100T PRESS FRAME | 1 | X | 23 | SFC388HB001 | HPF PUMP SHELF | 1 | |
| 12 | BLC005HH016 | M5 x 16 BUTTON HEAD SCREW | 3 | | 24 | BLC006JX025 | M8x30 CK SCREW | 2 | |

NOTES:

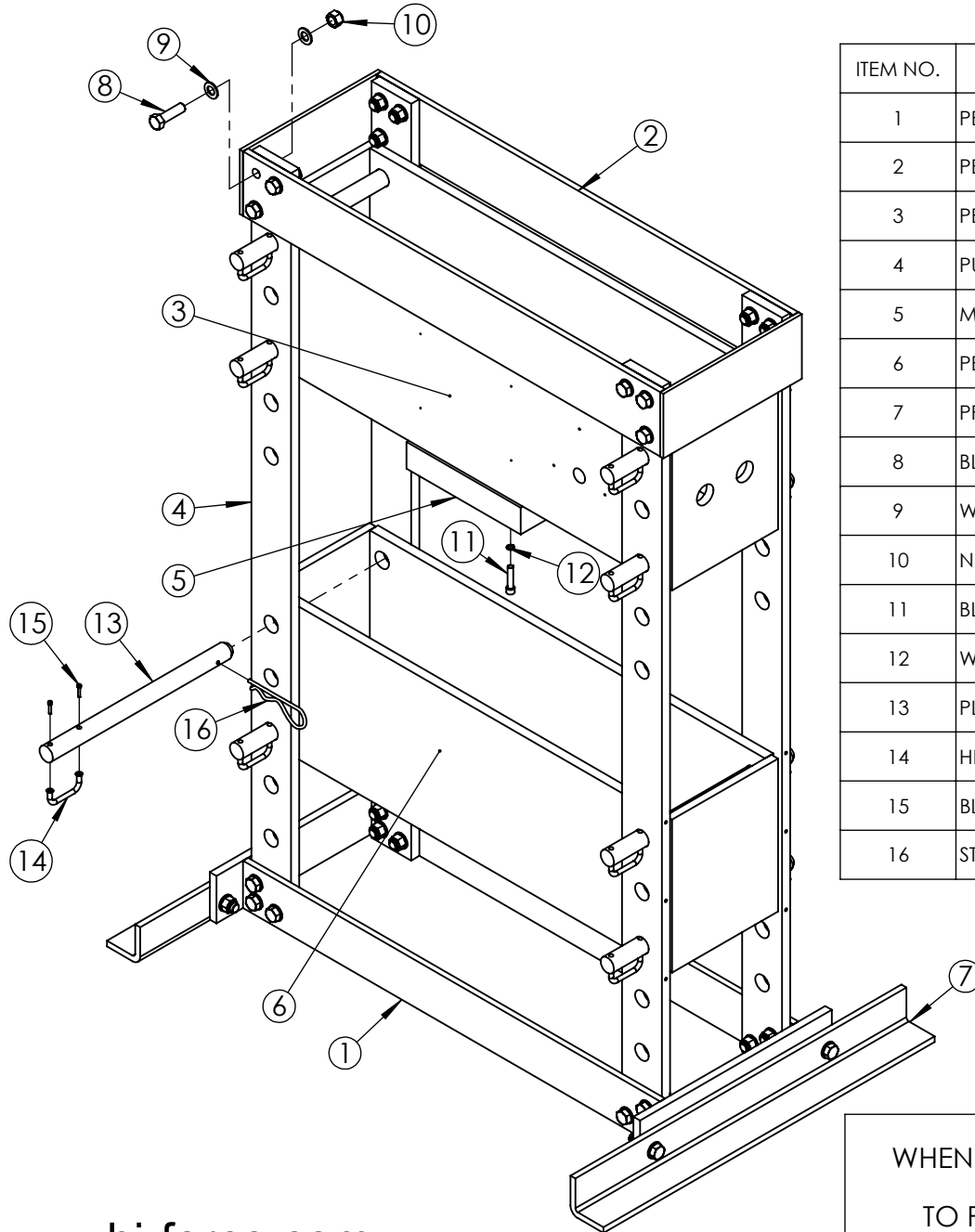
-ALL PARTS AVAILABLE TO ORDER AS AN INDIVIDUAL SPARE PART UNLESS MARKED "X"

-FOR SUB ASSEMBLIES (ITEM NO.S 1,7 & 11) PLEASE REFER TO THEIR INDIVIDUAL EVD's

IMPORTANT

WHEN ORDERING SPARES YOU MUST STATE THE FULL PART NUMBER AND THE PRODUCT SERIAL NUMBER - FROM THE LABEL TO PROTECT YOUR WARRANTY ALWAYS USE GENUINE HI-FORCE PARTS.

| | |
|----|------|
| 1 | 6169 |
| 2 | 6180 |
| 3 | 6376 |
| 4 | |
| 5 | |
| 6 | |
| 7 | |
| 8 | |
| 9 | |
| 10 | |
| 11 | |
| 12 | |
| 13 | |
| 14 | |
| 15 | |
| 16 | |
| 17 | |
| 18 | |
| 19 | |
| 20 | |

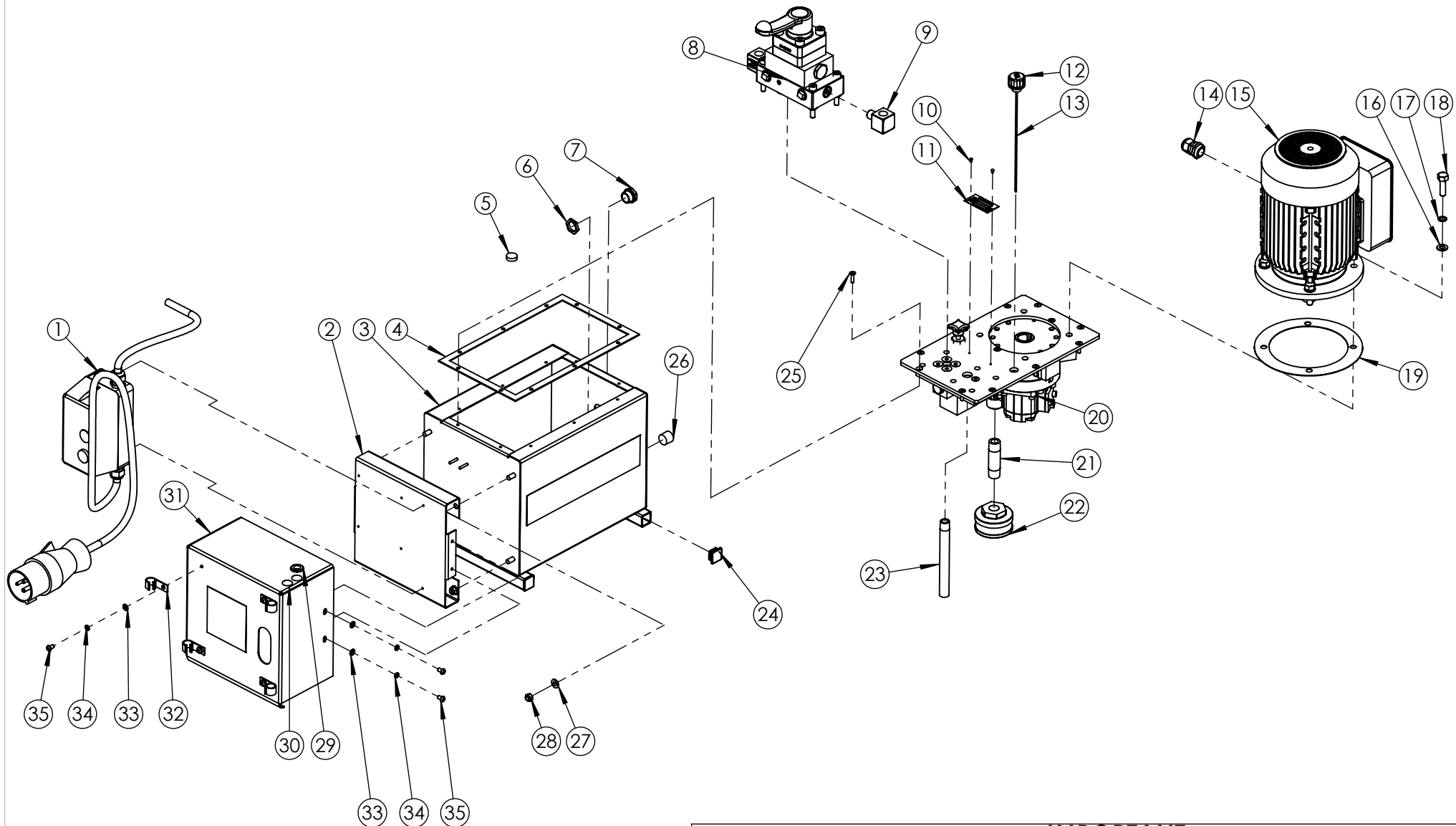


| ITEM NO. | PART NUMBER | DESCRIPTION | QTY. | SPARE PARTS | SERVICE PARTS |
|----------|-------------|-------------------------------|------|-------------|---------------|
| 1 | PBS100LH001 | 100T PRESS BASE | 1 | X | |
| 2 | PBS100UH001 | 100T PRESS UPPER | 1 | X | |
| 3 | PBS100HH001 | PRESS HEAD | 1 | X | |
| 4 | PUC100FF001 | 100T PRESS FRAME UPRIGHT | 4 | X | |
| 5 | MBC175FC001 | MOUNTING BLOCK | 1 | | |
| 6 | PBS100BH001 | PRESS BED | 1 | X | |
| 7 | PFC100AH001 | PRESS FOOT | 2 | X | |
| 8 | BLC020PA070 | M20 x 70 HEX HEAD BOLT | 28 | | |
| 9 | WAC020AB000 | M20 PL WASHER | 56 | | |
| 10 | NUC020PC000 | M20 NYLOK NUT | 28 | | |
| 11 | BLC012MC055 | M12 X 55MM BOLT | 4 | | |
| 12 | WAC012BB000 | M12 SPRING WASHER | 4 | | |
| 13 | PLC100EW001 | 100T LOAD PIN | 8 | | |
| 14 | HLC010BM003 | BRIDGE HANDLE | 8 | | |
| 15 | BLC005HD025 | M5 x 25 SOCKET CAP HEAD SCREW | 16 | | |
| 16 | STC040RA001 | R CLIP | 8 | | |

NOTE:
- ALL PARTS ARE AVAILABLE TO BE ORDERED AS SPARE PARTS
(UNLESS MARKED WITH X).

IMPORTANT

WHEN ORDERING SPARES YOU MUST STATE THE FULL PART NUMBER AND THE
PRODUCT SERIAL NUMBER - FROM THE LABEL
TO PROTECT YOUR WARRANTY ALWAYS USE GENUINE HI-FORCE PARTS.

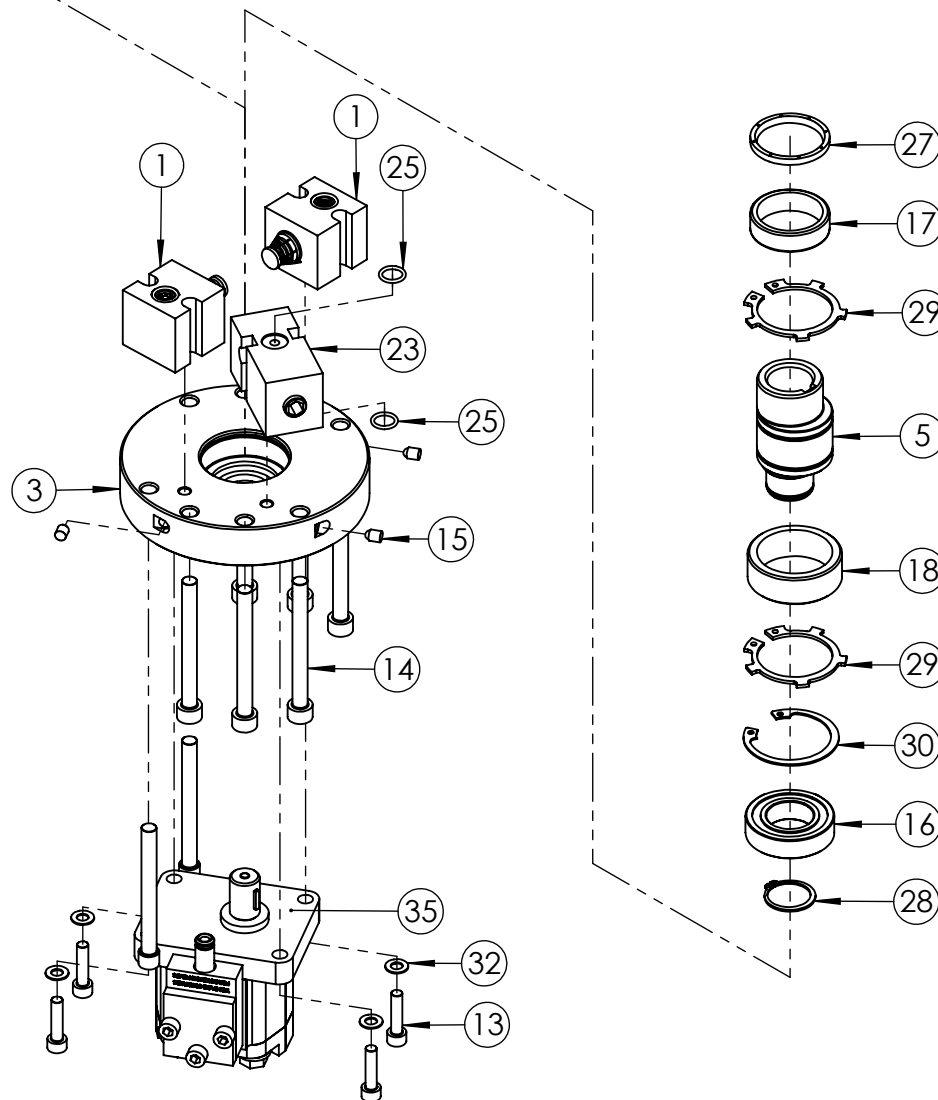
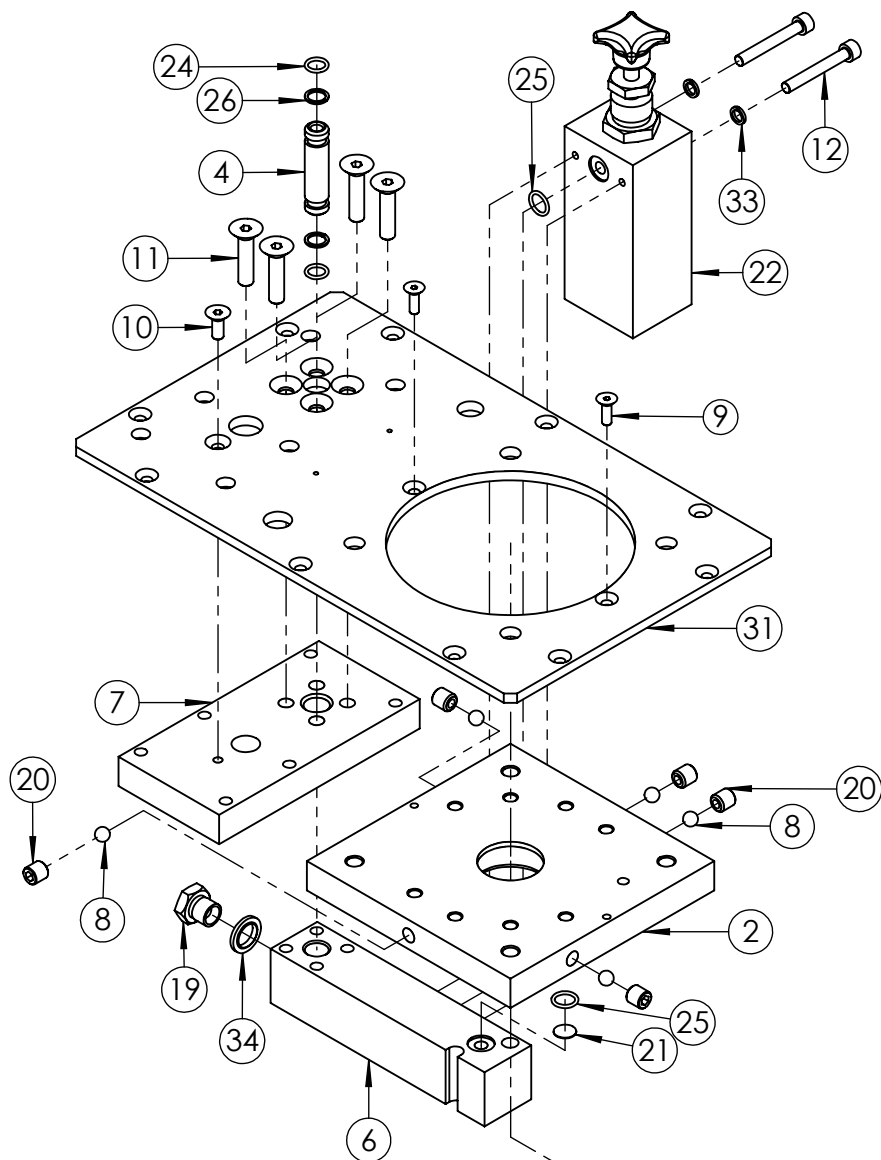


IMPORTANT

WHEN ORDERING SPARES YOU MUST STATE THE FULL PART NUMBER AND THE
PRODUCT SERIAL NUMBER - FROM THE LABEL
TO PROTECT YOUR WARRANTY ALWAYS USE GENUINE HI-FORCE PARTS.

| ITEM NO. | PART NUMBER | DESCRIPTION | QTY. | SPARE PARTS | SERVICE PARTS | ITEM NO. | PART NUMBER | DESCRIPTION | QTY. | SPARE PARTS | SERVICE PARTS | REVISION |
|----------|-----------------|--|------|-------------|---------------|--|-------------|--|------|-------------|---------------|----------|
| 1 | EMA230UE002 | MOTOR STARTER ASSEMBLY | 1 | | | 24 | BPC025KP001 | 1" SQ RIBBED INSERT BLACK | 4 | | | 1 6085 |
| 2 | TAC000FS003 | MOUNTING PLATE | 1 | | | 25 | BLC005HF020 | M5 x 20 mm HEX SOCKET COUNTERSUNK SCREW | 10 | | | 2 |
| 3 | TAC010AS012 | 10L Tank | 1 | | | 26 | FPC013PC001 | 1/2" BSP PLUG - HEX SOCKET | 1 | | | 3 |
| 4 | 15482 | TANK GASKET | 1 | | ✓ | 27 | WAC008AB000 | M8 PLAIN WASHER | 4 | | | 4 |
| 5 | DCSF00328 | DOUBLE SIDED MAGNET | 1 | | | 28 | NUC008KC000 | M8 NYLOC NUT | 4 | | | 5 |
| 6 | NUC021-B000 | 1/2" BSP LOCK NUT | 2 | | | 29 | SEC013EH001 | 12.7mm ID BLACK PVC OPEN GROMMET | 1 | | | 6 |
| 7 | BLC021YT010 | SIGHT GLASS HGF.13 BLACK OIL LEVEL INDICATOR | 2 | | | 30 | SEC013EH002 | 12.7mm OD BLACK PVC BLIND GROMMET | 2 | | | 7 |
| 8 | PMV4L | 4 WAY, MANUALLY OPERATED, PUMP MOUNTED DIRECTIONAL CONTROL VALVE WITH LOAD HOLDING | 1 | | | 31 | TAC000FS004 | HOUSING | 1 | | | 8 |
| 9 | HF16 | ELBOW, 3/8" NPT FEMALE TO 3/8" NPT MALE | 2 | | | 32 | ANC015PC001 | CABLE CLIP BLACK SCREW POLYACETAL CABLE CLIP, 15mm | 4 | | | 9 |
| 10 | FAS002HZ001 | NO.4 x 3/16 HAMMER DRIVE SCREW | 2 | | | 33 | WAC006AF000 | M6 ZINC WASHER | 8 | | | 10 |
| 11 | AAN000UP001 | 60 x 30 mm UNIVERSAL NAME PLATE | 1 | X | | 34 | WAC006BC001 | M6 SPRING ZINC WASHER (SQUARE SECTION) | 8 | | | 11 |
| 12 | BPC010SP002 | FILLER | 1 | | | 35 | BLC006JH010 | M6 X 10 mm, HEX SOCKET, BUTTON HEAD SCREW | 8 | | | 12 |
| 13 | BPC010DS001 | ZINC PLATED DIPSTICK 239mm LONG | 1 | | | <p>NOTE:</p> <p>-ALL PARTS ARE AVAILABLE TO BE ORDERED AS SPARE PARTS (UNLESS MARKED WITH X)</p> <p>-ONLY PARTS MARKED WITH ✓ ARE AVAILABLE AS BOTH SPARE PARTS OR SERVICEABLE PARTS, FROM HEP-SK1 PUMP SERVICE KIT. (REFER TO HEP-SK1 : PUMP SERVICE KIT EVD FOR FULL PARTS LIST)</p> <p>-FOR SUB ASSEMBLIES (ITEM NO.S 1, 8 & 20) PLEASE REFER TO THEIR INDIVIDUAL EVD's.</p> <p>-ITEM NO.S 12 & 13 MUST BE ORDERED TOGETHER</p> | | | | | | 13 |
| 14 | NUC020LS002 | GLAND 6-12MM | 1 | | | | | | | | | 14 |
| 15 | EM220-1.8-4HLAF | ELECTRIC MOTOR 1.8KW 220VAC | 1 | | | | | | | | | 15 |
| 16 | WAC010AB000 | M10 ZINC PLATED FLAT WASHER | 4 | | | | | | | | | 16 |
| 17 | WAC010BZ000 | M10 SPRING WASHER | 4 | | | | | | | | | 17 |
| 18 | BLC010LB035 | M10 x 35 mm HEX HEAD BOLT, ZINC PLATED | 4 | | | | | | | | | 18 |
| 19 | SEC001KT003 | GASKET | 1 | | ✓ | | | | | | | 19 |
| 20 | TYPE200-24 | 200 SERIES PUMP UNIT | 1 | | | | | | | | | 20 |
| 21 | FPC013AC010 | 1/2" BSPT SUCTION PIPE | 1 | | | | | | | | | |
| 22 | FFC045MZ001 | FILTER | 1 | | | | | | | | | |
| 23 | TAC000PA001 | 160 mm LONG SUCTION PIPE | 1 | | | | | | | | | |

| | |
|----|------|
| 1 | 5717 |
| 2 | 5866 |
| 3 | 5939 |
| 4 | |
| 5 | |
| 6 | |
| 7 | |
| 8 | |
| 9 | |
| 10 | |
| 11 | |
| 12 | |
| 13 | |
| 14 | |
| 15 | |
| 16 | |
| 17 | |
| 18 | |
| 19 | |
| 20 | |



IMPORTANT

WHEN ORDERING SPARES YOU MUST STATE THE FULL PART NUMBER AND THE
PRODUCT SERIAL NUMBER - FROM THE LABEL
TO PROTECT YOUR WARRANTY ALWAYS USE GENUINE HI-FORCE PARTS.

| ITEM NO. | PART NUMBER | DESCRIPTION | QTY. | SPARE PARTS | SERVICE PARTS |
|----------|----------------|--|------|-------------|---------------|
| 1 | 15494-A | PISTON BLOCK ASSEMBLY | 2 | | |
| 2 | 15497 | UPPER PLATE | 1 | | |
| 3 | 15499 | LOWER PLATE | 1 | | |
| 4 | 15503 | CONNECTOR PIPE | 1 | | |
| 5 | 15505 | 24mm DRIVE SHAFT | 1 | | |
| 6 | 17587 | TRANSFER BLOCK | 1 | | |
| 7 | 17588 | VALVE PLATE | 1 | | |
| 8 | BAC008SN000 | Ø8 mm STEEL BALL GRADE 100 | 5 | | |
| 9 | BLC005HF016 | M5 x 16 mm HEX SOCKET COUNTERSUNK SCREW | 2 | | |
| 10 | BLC006JE016 | M6 x 16 mm HEX SOCKET COUNTERSUNK SCREW | 1 | | |
| 11 | BLC008KF035 | M8 x 35 mm HEX SOCKET COUNTERSUNK SCREW | 4 | | |
| 12 | BLC006JC045 | M6 x 45 mm HEX SOCKET CAP HEAD SCREW | 2 | | |
| 13 | BLC006JD025 | M6 x 25 mm HEX SOCKET CAP HEAD SCREW | 4 | | |
| 14 | BLC008KC080 | M8 x 80 mm HEX SOCKET CAP HEAD SCREW | 6 | | |
| 15 | BPC006RS001 | SEALING PLUG | 3 | | |
| 16 | BSC025MC001 | LOWER PLATE BEARING | 1 | | |
| 17 | BSC035NC001 | UPPER PLATE BEARING | 1 | | |
| 18 | BSC040ND001 | ECCENTRIC BEARING | 1 | | |
| 19 | FAS006GJ010 | 1/4" BSP HEX HEAD BLANKING PLUG | 1 | | |
| 20 | FAS010MA010 | M10 X 10 CUP POINT GRUB SCREW | 5 | | |
| 21 | FFC012MA001 | SUCTION FILTER | 1 | | |
| 22 | HPRV1 | HIGH PRESSURE R/VALVE | 1 | | |
| 23 | LPRV1 | LOW PRESSURE R/VALVE | 1 | | |
| 24 | SEC013RA001 | O-RING - I.D. 9.25mm, C.S. 1.78mm, NITRILE 90 | 2 | | ✓ |
| 25 | SEC014RF001 | O-RING - I.D. 10.82 mm, C.S. 1.78 mm, NITRILE 90 | 4 | | ✓ |

| ITEM NO. | PART NUMBER | DESCRIPTION | QTY. | SPARE PARTS | SERVICE PARTS | REVISION |
|----------|--------------------|--|------|-------------|---------------|----------|
| 26 | SEC013BA001 | BACK-UP RING - PTFE, SOLID SPLIT | 2 | | ✓ | 1 5717 |
| 27 | SEC035WE001 | UPPER PLATE OIL SEAL | 1 | | | 2 5866 |
| 28 | STC025AA001 | EXTERNAL CIRCLIP - 25 x 1.2 mm D1400/025 | 1 | | | 3 5939 |
| 29 | STC040AA001 | EXTERNAL CIRCLIP - 40 x 1.75 mm D2100/0400 | 2 | | | 4 |
| 30 | STC047BA001 | INTERNAL CIRCLIP - 47 x 1.75 mm D1300/0470 | 1 | | | 5 |
| 31 | TAC000BA003 | COVER PLATE | 1 | | | 6 |
| 32 | WAC006AF000 | M6 ZINC WASHER | 4 | | | 7 |
| 33 | WAC006BC001 | M6 SPRING ZINC WASHER (SQUARE SECTION) | 2 | | | 8 |
| 34 | WAC007HD000 | 1/4" BSP SELF CENTERING BONDED WASHER | 1 | | | 9 |
| 35 | PMA048GZ001 | GP48 GEAR PUMP ASSEMBLY | 1 | | | 10 |

NOTE:

- ALL PARTS ARE AVAILABLE TO BE ORDERED AS SPARE PARTS (UNLESS MARKED WITH X).

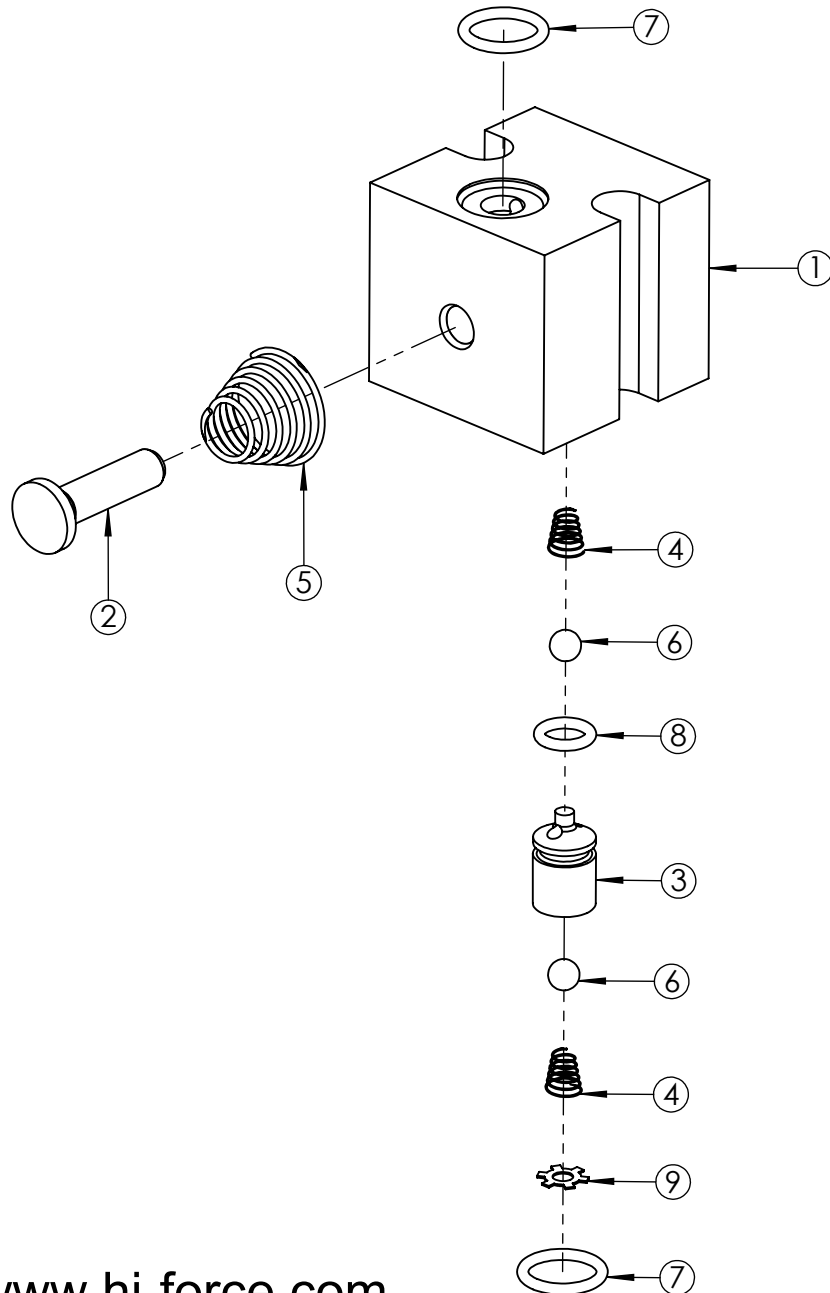
- ONLY PARTS MARKED WITH ✓ ARE AVAILABLE AS BOTH SPARE PARTS OR SERVICEABLE PARTS, FROM **HEP-SK1 PUMP SERVICE KIT**. (REFER TO HEP-SK1: PUMP SERVICE KIT EVD FOR FULL PARTS LIST)

- IF ITEM NO. 23 (**LPRV1**) IS ORDERED AS A SPARE PART, THIS ALREADY COMES WITH 2 OFF ITEM NO. 25 (**SEC014RF001**). THEREFORE THESE ARE NOT REQUIRED TO BE ORDERED SPERATELY.

- FOR SUB ASSEMBLIES - ITEM NO. 1 (**15494-A**) & ITEM NO. 35 (**PMA048GZ001**) REFER TO THEIR INDIVIDUAL EVD's.

IMPORTANT

WHEN ORDERING SPARES YOU MUST STATE THE FULL PART NUMBER AND THE PRODUCT SERIAL NUMBER - FROM THE LABEL TO PROTECT YOUR WARRANTY ALWAYS USE GENUINE HI-FORCE PARTS.



| ITEM NO. | PART NUMBER | DESCRIPTION | QTY. | SPARE PARTS | SERVICE PARTS | REVISION |
|----------|-------------|--|------|-------------|---------------|----------|
| 1 | 15494 | PISTON BLOCK | 1 | ✗ | | 1 5717 |
| 2 | 15495 | PISTON | 1 | ✗ | | 2 5866 |
| 3 | 15496 | VALVE SEAT | 1 | ✗ | | 3 |
| 4 | 15509 | SUCTION/DELIVERY SPRING | 2 | ✗ | | 4 |
| 5 | 15508 | PUMP SPRING | 1 | ✗ | | 5 |
| 6 | BAC005SN000 | Ø5 mm STEEL BALL GRADE 100 | 2 | ✗ | | 6 |
| 7 | SEC014RF001 | O-RING - I.D. 10.82 mm, C.S. 1.78 mm, NITRILE 90 | 2 | | ✓ | 7 |
| 8 | SEC010RA001 | O-RING - I.D. 6.35 mm, C.S. 1.78 mm, NITRILE 70 | 1 | ✗ | | 8 |
| 9 | STC008SA001 | N1305-0031 SELF LOCKING RING | 1 | ✗ | | 9 |
| | | | | | | 10 |
| | | | | | | 11 |
| | | | | | | 12 |
| | | | | | | 13 |
| | | | | | | 14 |
| | | | | | | 15 |
| | | | | | | 16 |
| | | | | | | 17 |
| | | | | | | 18 |
| | | | | | | 19 |
| | | | | | | 20 |

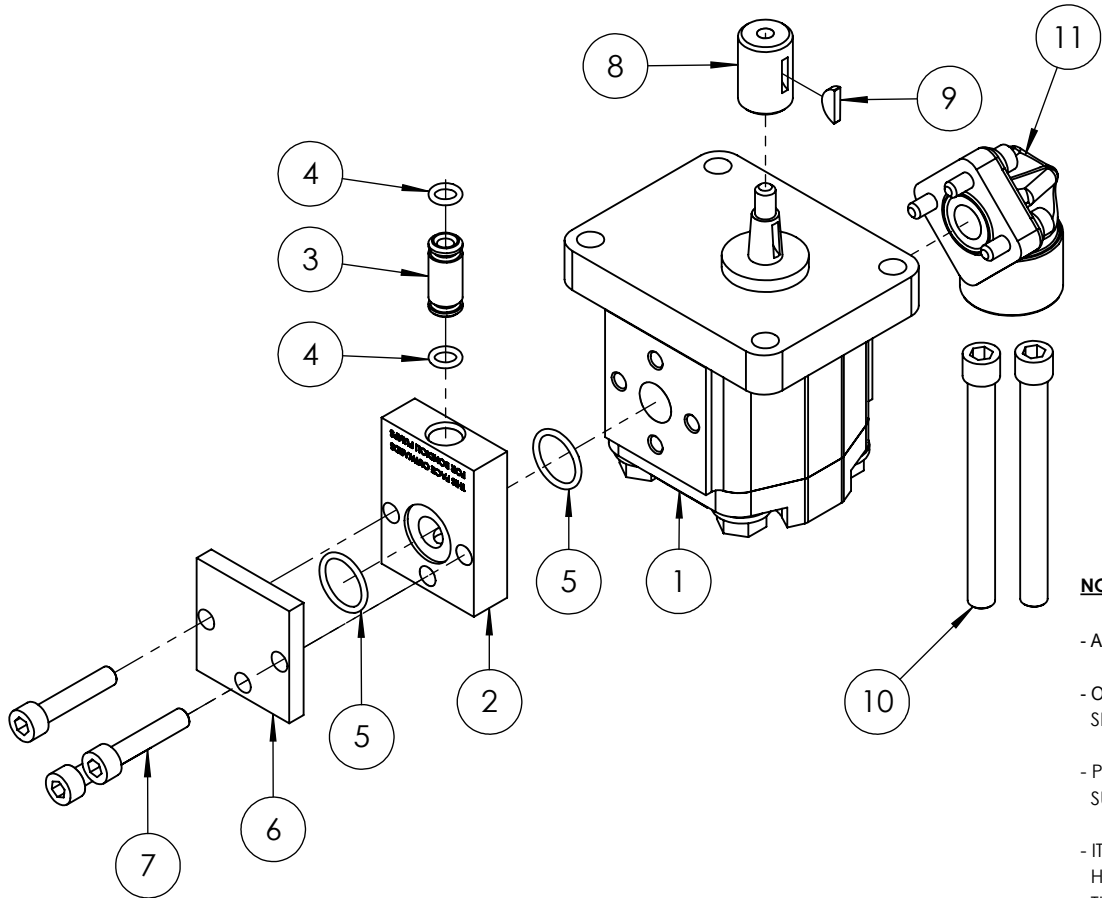
NOTE:

- ALL PARTS ARE AVAILABLE TO BE ORDERED AS SPARE PARTS (UNLESS MARKED WITH ✗).

- ONLY PARTS MARKED WITH ✓ ARE AVAILABLE AS BOTH SPARE PARTS OR SERVICEABLE PARTS, FROM **HEP-SK1 PUMP SERVICE KIT**. (REFER TO HEP-SK1: PUMP SERVICE KIT EVD FOR FULL PARTS LIST).

IMPORTANT

WHEN ORDERING SPARES YOU MUST STATE THE FULL PART NUMBER AND THE PRODUCT SERIAL NUMBER - FROM THE LABEL TO PROTECT YOUR WARRANTY ALWAYS USE GENUINE HI-FORCE PARTS.



| ITEM NO. | PART NUMBER | DESCRIPTION | QTY. | SPARE PARTS | SERVICE PARTS | REVISION | |
|----------|-------------|--|------|-------------|---------------|----------|------|
| 1 | GP48 | GEAR PUMP | 1 | | | 1 | 5939 |
| 2 | PMC000TM001 | TRANSFER PLATE | 1 | | | 2 | 5983 |
| 3 | 15510A | CONNECTOR TUBE | 1 | | | 3 | |
| | 15510B | CONNECTOR TUBE | 1 | | | 4 | |
| 4 | SEC010RA001 | O-RING - I.D. 6.35 mm, C.S. 1.78 mm, NITRILE 70 | 2 | | ✓ | 5 | |
| 5 | SEC019RF002 | O-RING - I.D. 15.60, C.S. 1.78mm, NITRILE 90 | 2 | | ✓ | 6 | |
| 6 | PMC000XM001 | SEALING PLATE | 1 | | | 7 | |
| 7 | BLC006JD030 | M6 x 30 mm HEX SOCKET CAP HEAD SCREW | 3 | | | 8 | |
| 8 | 15507 | ADAPTOR | 1 | | | 9 | |
| 9 | PCC002WC001 | KEY TO FIT 200/300 PUMPS | 1 | | | 10 | |
| 10 | FAS008SP080 | M8 X 80 HEX SOCKET REDUCED CAP HEAD SCREW (FULLY THREADED) | 2 | | | 11 | |
| 11 | FPA013DC001 | GEAR PUMP ELBOW (INC WITH GEAR PUMP) | 1 | x | | 12 | |

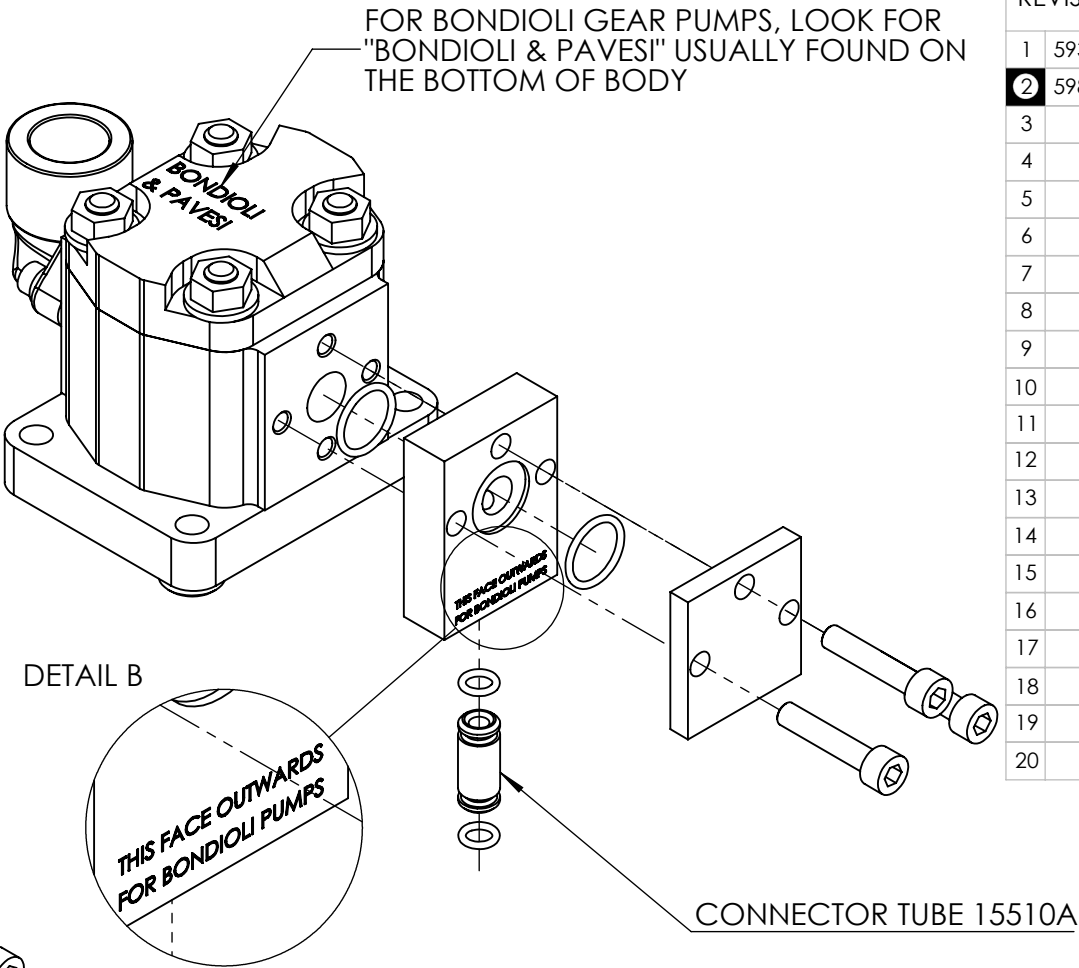
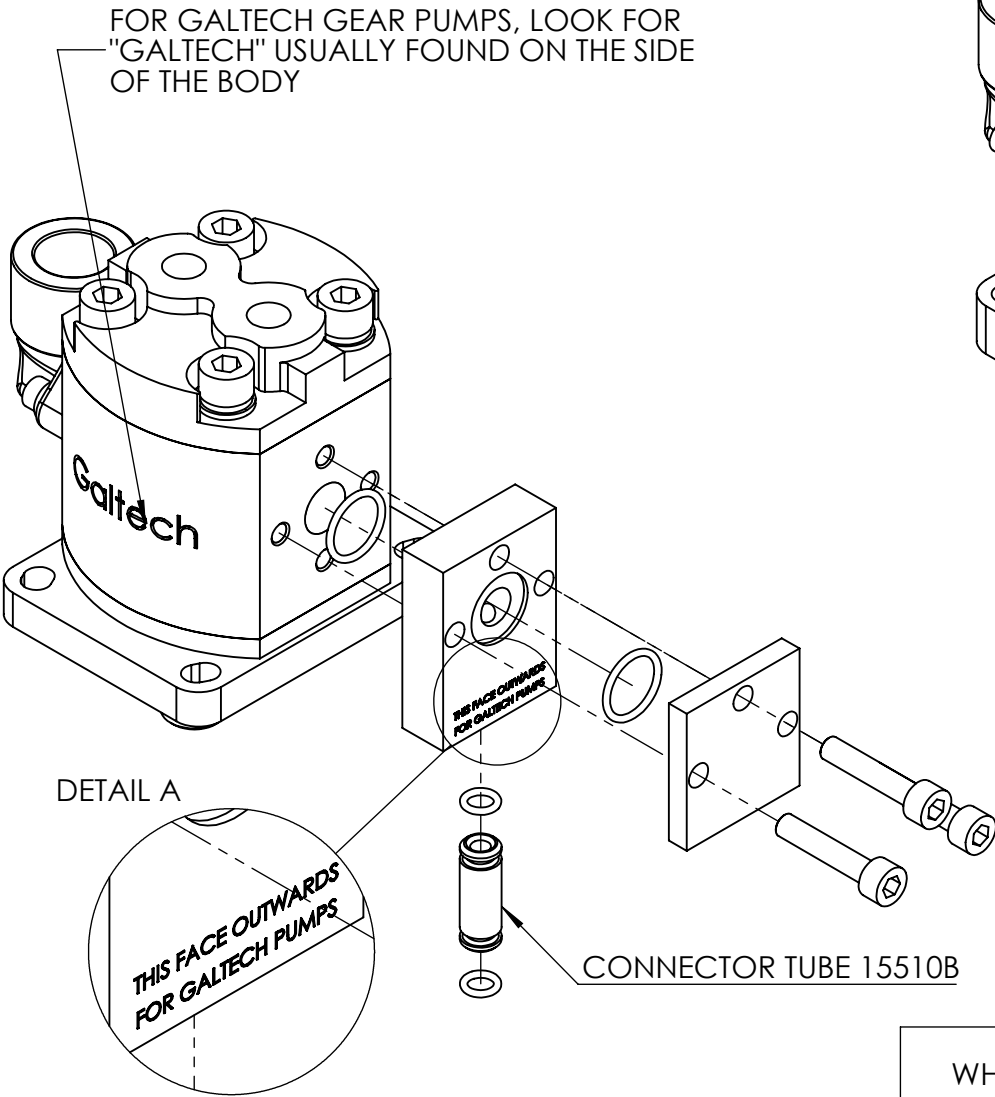
NOTE:

- ALL PARTS ARE AVAILABLE TO BE ORDERED AS SPARE PARTS (UNLESS MARKED WITH x)
- ONLY PARTS MARKED WITH ✓ ARE AVAILABLE AS BOTH SPARE PARTS OR SERVICEABLE PARTS, FROM HEP SK1 PUMP SERVICE KIT. (REFER TO HEP-SK1: PUMP SERVICE KIT EVD FOR FULL PARTS LIST)
- POSITION OF ITEM NO. 2 (PMC000TM001) IS TO BE DETERMINED BY THE BRAND OF THE GP48 GEAR PUMP SUPPLIED (REFER TO SHEET 2 FOR FURTHER DETAILS)
- ITEM NO. 3 USED IS DETERMINED BY THE BRAND OF THE GP48 GEAR PUMP SUPPLIED FOR HEP, HAP AND HPP PUMPS WITH SERIAL NUMBERS EARLIER THAN **BR9070**. FOR BONDIOLI GEAR PUMPS USE CONNECTOR TUBE 15510A AND FOR GALTECH GEAR PUMPS USE CONNECTOR TUBE 15510B (REFER TO SHEET 2 FOR FURTHER DETAILS)
- ITEM NO.10 (FAS008SP080) ARE TO REPLACE TWO SCREWS (BLC008KC080) ON THE TYPE200-24, PRIOR TO FITTING PMA048GZ001 (REFER TO SHEET 3 FOR FURTHER DETAILS)
- INDIVIDUAL ITEMS ARE NOT AVAILABLE AS SPARE PARTS FOR HEP, HAP AND HPP PUMPS WITH SERIAL NUMBERS EARLIER THAN **BR9070**. GP48 GEAR PUMP ASSEMBLY (PMA048GZ001) WILL NEED TO BE ORDERED. INDIVIDUAL ITEMS APART FROM ITEM NO.11 ARE AVAILABLE AS SPARE PARTS FOR HEP, HAP AND HPP PUMPS WITH SERIAL NUMBERS ABOVE **BR9070**

IMPORTANT

WHEN ORDERING SPARES YOU MUST STATE THE FULL PART NUMBER AND THE PRODUCT SERIAL NUMBER - FROM THE LABEL TO PROTECT YOUR WARRANTY ALWAYS USE GENUINE HI-FORCE PARTS.

ORIENTATION OF TRANSFER PLATE



REVISION

| | |
|----|------|
| 1 | 5939 |
| 2 | 5983 |
| 3 | |
| 4 | |
| 5 | |
| 6 | |
| 7 | |
| 8 | |
| 9 | |
| 10 | |
| 11 | |
| 12 | |
| 13 | |
| 14 | |
| 15 | |
| 16 | |
| 17 | |
| 18 | |
| 19 | |
| 20 | |

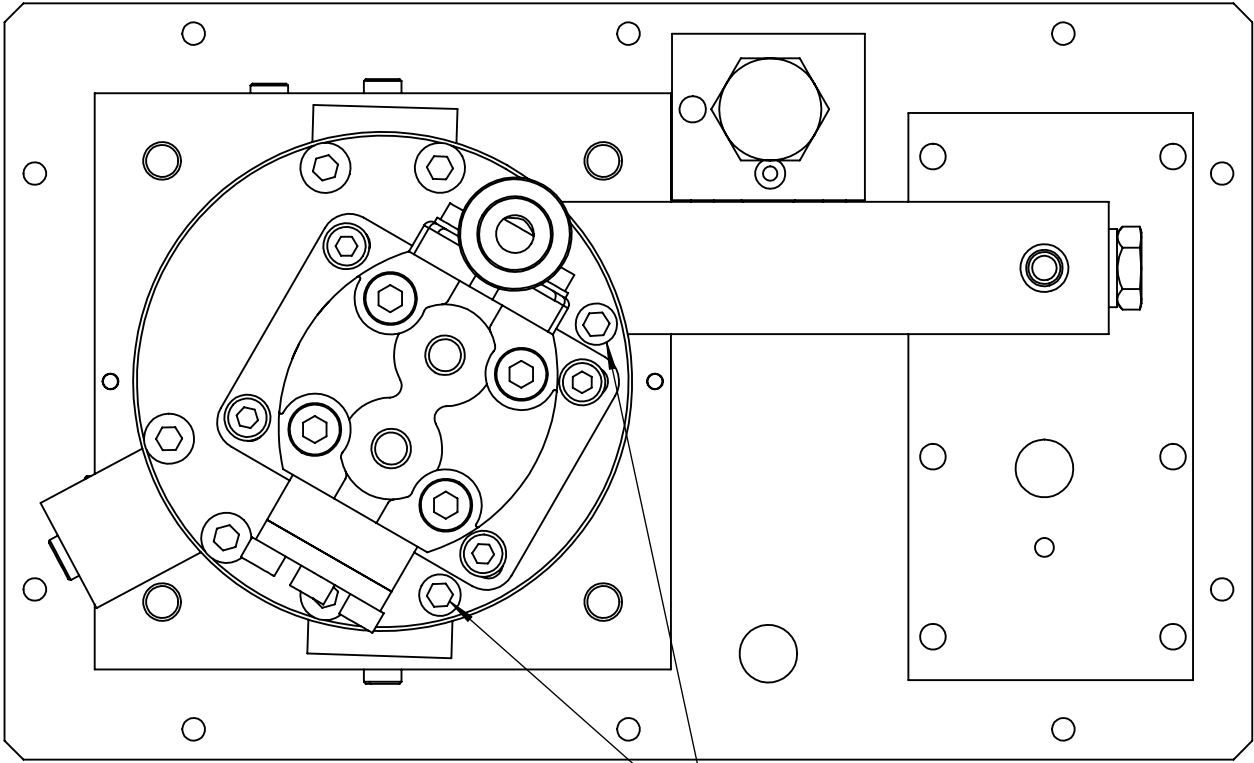
IMPORTANT

WHEN ORDERING SPARES YOU MUST STATE THE FULL PART NUMBER AND THE PRODUCT SERIAL NUMBER - FROM THE LABEL TO PROTECT YOUR WARRANTY ALWAYS USE GENUINE HI-FORCE PARTS.

REVISION

| | |
|----|------|
| 1 | 5939 |
| 2 | 5983 |
| 3 | |
| 4 | |
| 5 | |
| 6 | |
| 7 | |
| 8 | |
| 9 | |
| 10 | |
| 11 | |
| 12 | |
| 13 | |
| 14 | |
| 15 | |
| 16 | |
| 17 | |
| 18 | |
| 19 | |
| 20 | |

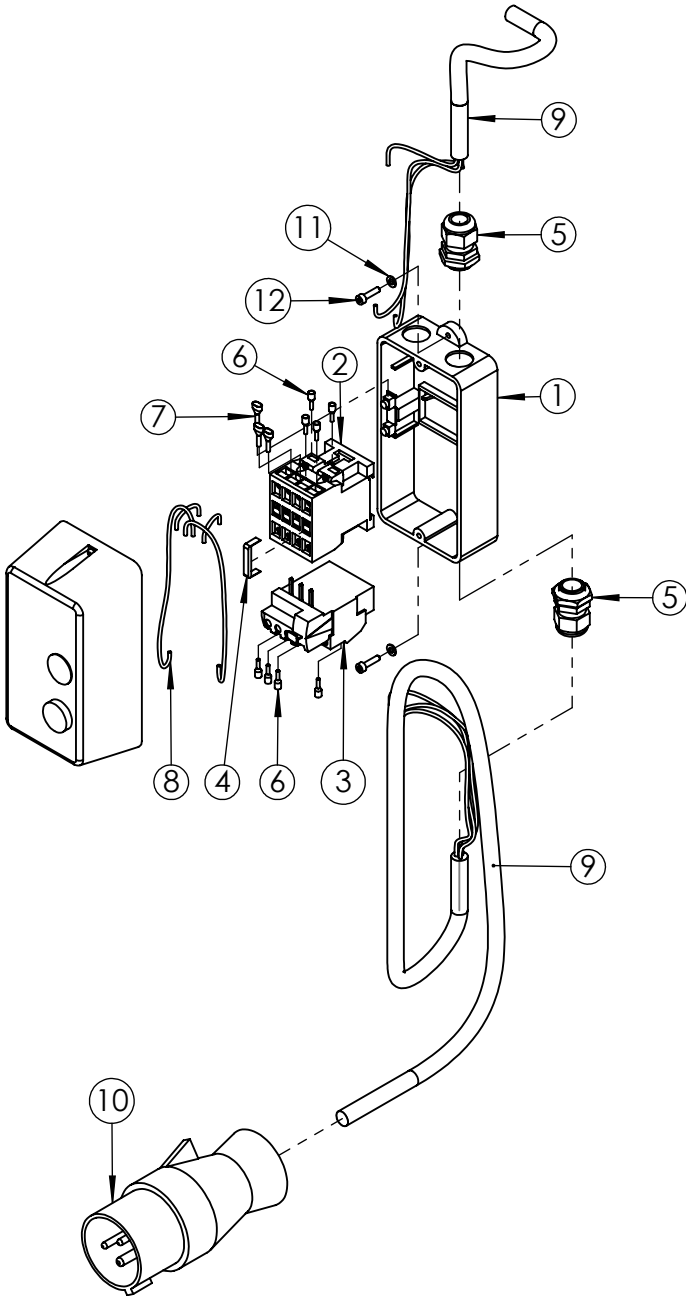
TYPE200-24: BOTTOM VIEW



REMOVE THE TWO CURRENT SCREWS FROM THESE TWO POSITIONS AND REPLACE WITH ITEM NO. 10 (FAS008SP080)

IMPORTANT

WHEN ORDERING SPARES YOU MUST STATE THE FULL PART NUMBER AND THE PRODUCT SERIAL NUMBER - FROM THE LABEL TO PROTECT YOUR WARRANTY ALWAYS USE GENUINE HI-FORCE PARTS.



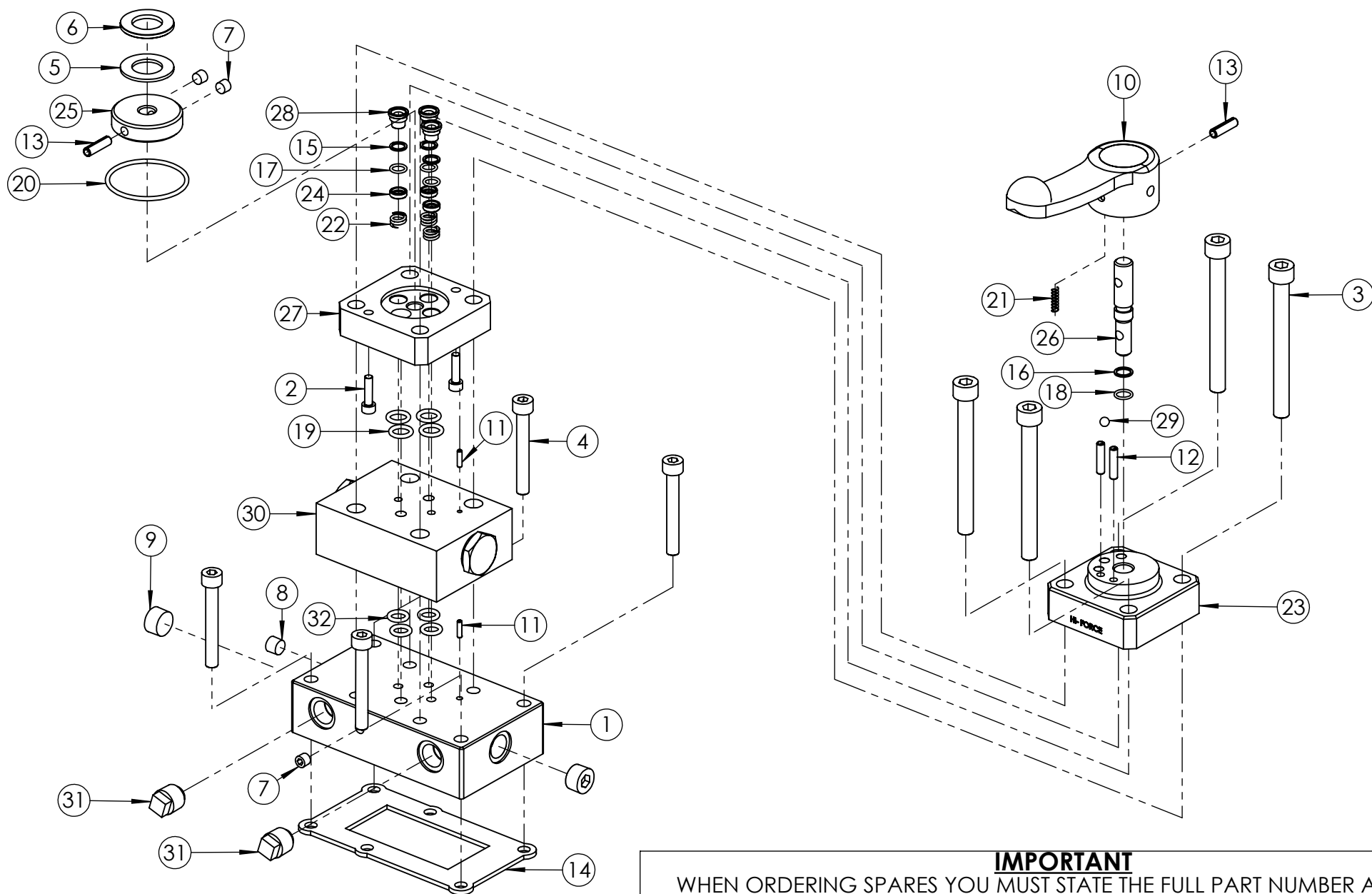
| ITEM NO. | PART NUMBER | DESCRIPTION | QTY. | SPARE PARTS | SERVICE PARTS | REVISION |
|----------|-------------|--|------|-------------|---------------|----------|
| 1 | EMC000EF001 | ENCLOSURE WITH PUSH BUTTONS P1MT | 1 | | | 1 6085 |
| 2 | EMC230KE001 | CONTACTOR 230 VOLT | 1 | | | 2 |
| 3 | EMC230RE002 | OVERLOAD RELAY 10-14amps | 1 | | | 3 |
| 4 | EMC110XF001 | BRIDGING BAR | 1 | | | 4 |
| 5 | NUC020LS002 | GLAND 6-12MM | 2 | | | 5 |
| 6 | CEC250SX001 | BOOTLACE FERRULE (INSULATED) 2.5mm GREY | 8 | | | 6 |
| 7 | CEC250SX002 | TWIN BOOTLACE FERRULE 2.5 mm ² | 3 | | | 7 |
| 8 | CEC250AC000 | SINGLE CORE TR-RATED CABLE 2.5 mm ² | 1 | | | 8 |
| 9 | CEC250CC000 | 3 CORE CABLE 2.5mm ² H07RN-F3G 2.5 | 2 | | | 9 |
| 10 | MCC240EP002 | 240V 16 Amp PLUG | 1 | | | 10 |
| 11 | WAC004YB000 | M4 WASHER ST | 2 | | | 11 |
| 12 | BLC004JD016 | M4 X 16 HEX SOCKET, CAP HEAD SCREW | 2 | | | 12 |

NOTE:

- ALL PARTS ARE AVAILABLE TO BE ORDERED AS SPARE PARTS (UNLESS MARKED WITH X).

IMPORTANT

WHEN ORDERING SPARES YOU MUST STATE THE FULL PART NUMBER AND THE PRODUCT SERIAL NUMBER - FROM THE LABEL TO PROTECT YOUR WARRANTY ALWAYS USE GENUINE HI-FORCE PARTS.



IMPORTANT

WHEN ORDERING SPARES YOU MUST STATE THE FULL PART NUMBER AND THE
PRODUCT SERIAL NUMBER - FROM THE LABEL
TO PROTECT YOUR WARRANTY ALWAYS USE GENUINE HI-FORCE PARTS.

| ITEM NO. | PART NUMBER | DESCRIPTION | QTY. | SPARE PARTS | SERVICE PARTS |
|----------|-------------|--|------|-------------|---------------|
| 1 | VFC010BF007 | VALVE MOUNTING BLOCK | 1 | | |
| 2 | BLC005HU020 | M5 x 20 mm HEX SOCKET CAP HEAD SCREW | 2 | | |
| 3 | BLC010LC100 | M10 x 100 mm HEX SOCKET CAP HEAD SCREW | 4 | | |
| 4 | BLC008KC060 | M8 x 60 mm HEX SOCKET CAP HEAD SCREW | 4 | | |
| 5 | BSC035NA001 | NEEDLE BEARING | 1 | | |
| 6 | BSC035NA002 | HOUSING WASHER | 1 | | |
| 7 | FPC002PN001 | 1/16" x 7/8" NPT SOCKET PLUG | 3 | | |
| 8 | FPC003PN001 | 1/8" x 3/4" NPT TAPER DRY SEAL PRESS PLUG | 1 | | |
| 9 | FPC010PN002 | 3/8" X 7/8" NPT SOCKET PLUG | 2 | | |
| 10 | HLC012LP002 | HANDLE | 1 | | |
| 11 | PCC003RB006 | Ø3 x 12 mm SELLOCK PIN | 2 | | |
| 12 | PCC005RD002 | Ø5 x 22 mm SPIROL PIN | 2 | | |
| 13 | PCC006RD001 | Ø6 X 22 mm SPIROL PIN | 2 | | |
| 14 | SEC003KT001 | VALVE GASKET | 1 | | ✓ |
| 15 | SEC011BA001 | BACK UP RING | 3 | | ✓ |
| 16 | SEC012BA002 | BACK UP RING | 1 | | ✓ |
| 17 | SEC011RA001 | O-RING - I.D. 8.10 mm, C.S. 1.6 mm, NITRILE 90 | 3 | | ✓ |
| 18 | SEC012RA003 | O-RING - I.D. 9 mm, C.S. 1.50 mm, NITRILE 70 | 1 | | ✓ |
| 19 | SEC016RA002 | O-RING - I.D. 10.77 mm, C.S. 2.62 mm, NITRILE 70 | 4 | | ✓ |
| 20 | SEC049RF001 | O-RING - I.D. 48.90 mm, C.S. 2.62 mm, NITRILE 90 | 1 | | ✓ |
| 21 | SPC005KA001 | SPRING | 1 | | |
| 22 | SPC010CA001 | SPRING | 3 | | |
| 23 | VFC000BD003 | VALVE BODY | 1 | | |
| 24 | VFC000SC001 | SHEAR SEAL COLLAR | 3 | | |
| 25 | VFC000SQ002 | VALVE ROTOR | 1 | | |

| ITEM NO. | PART NUMBER | DESCRIPTION | QTY. | SPARE PARTS | SERVICE PARTS | REVISION |
|----------|---------------|---|------|-------------|---------------|----------|
| 26 | VFC000SR002 | SPINDLE | 1 | | | 1 5717 |
| 27 | VFC000ST001 | SHEAR SEAL PLATE | 1 | | | 2 |
| 28 | VFC000SU001 | SHEAR SEAL | 3 | | | 3 |
| 29 | BAC006SN000 | Ø6 mm STEEL BALL | 1 | | | 4 |
| 30 | V-8245 | DUAL CHECK VALVE | 1 | | | 5 |
| 31 | BPC010SP004 | 3/8 NPT PLASTIC BLANKING PLUG (RED) | 2 | | | 6 |
| 32 | SEC014RA001 | O-RING - I.D. 9.19mm, C.S. 2.62mm, NITRILE 90 | 4 | | ✓ | 7 |
| | | | | | | 8 |
| | | | | | | 9 |
| | | | | | | 10 |
| | | | | | | 11 |
| | | | | | | 12 |
| | | | | | | 13 |
| | | | | | | 14 |
| | | | | | | 15 |
| | | | | | | 16 |
| | | | | | | 17 |
| | | | | | | 18 |
| | | | | | | 19 |
| | | | | | | 20 |

NOTE:

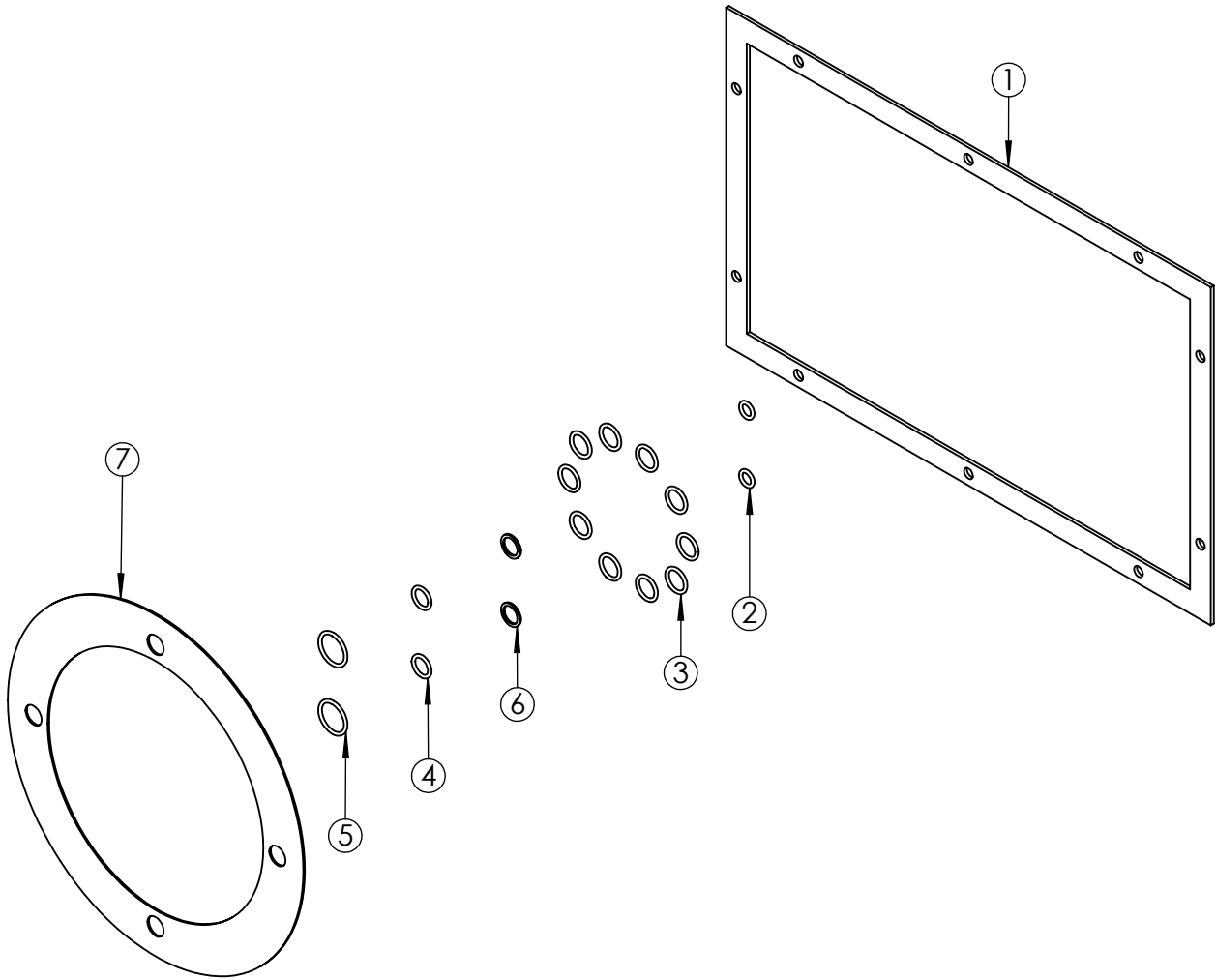
- ALL PARTS ARE AVAILABLE TO BE ORDERED AS SPARE PARTS (UNLESS MARKED WITH **X**).

- ONLY PARTS MARKED WITH **✓** ARE AVAILABLE AS BOTH SPARE PARTS OR SERVICEABLE PARTS, FROM **DCV-M1 : SERVICE KIT (3 & WAY MANUAL VALVES)**. (REFER TO **DCV-M1** EVD FOR FULL PARTS LIST)

- IF ITEM NO. 30 IS ORDERED AS A SPARE PART, THIS ALREADY COMES WITH ITEM NO. 32. THEREFORE THESE ARE NOT REQUIRED TO BE ORDERED SEPERATELY.

IMPORTANT

WHEN ORDERING SPARES YOU MUST STATE THE FULL PART NUMBER AND THE PRODUCT SERIAL NUMBER - FROM THE LABEL TO PROTECT YOUR WARRANTY ALWAYS USE GENUINE HI-FORCE PARTS.



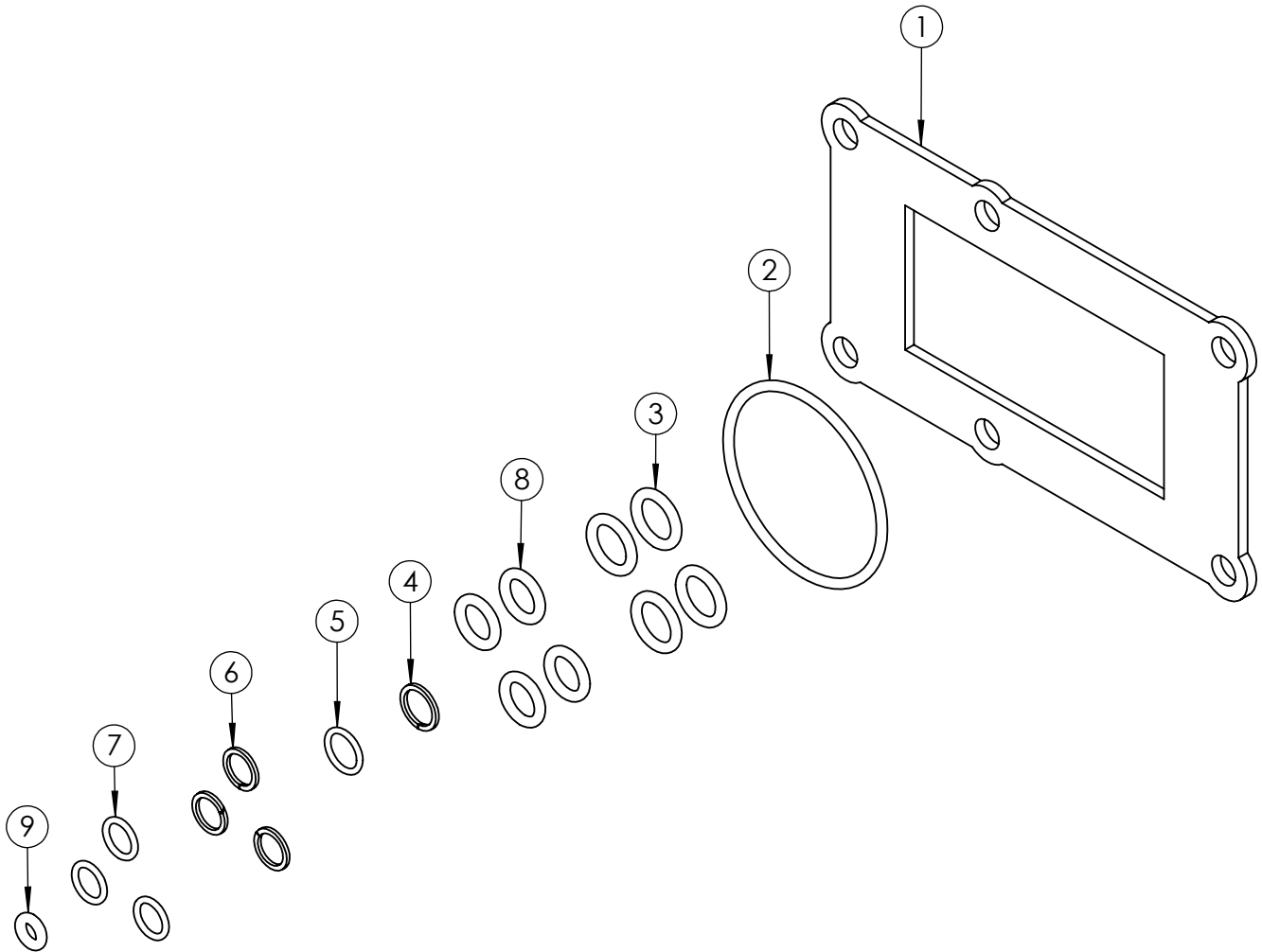
| ITEM NO. | PART NUMBER | DESCRIPTION | QTY. |
|----------|-------------|--|------|
| 1 | 15482 | TANK GASKET | 1 |
| 2 | SEC010RA001 | O-RING - I.D. 6.35 mm, C.S. 1.78 mm, NITRILE 70 | 2 |
| 3 | SEC014RF001 | O-RING - I.D. 10.82 mm, C.S. 1.78 mm, NITRILE 90 | 10 |
| 4 | SEC013RA001 | O-RING - I.D. 9.25mm, C.S. 1.78mm, NITRILE 90 | 2 |
| 5 | SEC019RF002 | O-RING - I.D. 15.60, C.S. 1.78mm, NITRILE 90 | 2 |
| 6 | SEC013BA001 | BACK-UP RING - PTFE, SOLID SPLIT | 2 |
| 7 | SEC001KT003 | GASKET | 1 |

| REVISION | |
|----------|------|
| 1 | 5717 |
| 2 | 5939 |
| 3 | |
| 4 | |
| 5 | |
| 6 | |
| 7 | |
| 8 | |
| 9 | |
| 10 | |
| 11 | |
| 12 | |
| 13 | |
| 14 | |
| 15 | |
| 16 | |
| 17 | |
| 18 | |
| 19 | |
| 20 | |

IMPORTANT

WHEN ORDERING SPARES YOU MUST STATE THE FULL PART NUMBER AND THE PRODUCT SERIAL NUMBER - FROM THE LABEL
TO PROTECT YOUR WARRANTY ALWAYS USE GENUINE HI-FORCE PARTS.

| ITEM NO. | PART NUMBER | DESCRIPTION | QTY. | REVISION |
|----------|-------------|--|------|----------|
| 1 | SEC003KT001 | VALVE GASKET | 1 | 1 5717 |
| 2 | SEC049RF001 | O-RING - I.D. 48.90 mm, C.S. 2.62 mm, NITRILE 90 | 1 | 2 |
| 3 | SEC016RA002 | O-RING - I.D. 10.77 mm, C.S. 2.62 mm, NITRILE 70 | 4 | 3 |
| 4 | SEC012BA002 | BACK UP RING | 1 | 4 |
| 5 | SEC012RA003 | O-RING - I.D. 9 mm, C.S. 1.50 mm, NITRILE 70 | 1 | 5 |
| 6 | SEC011BA001 | BACK UP RING | 3 | 6 |
| 7 | SEC011RA001 | O-RING - I.D. 8.10 mm, C.S. 1.6 mm, NITRILE 90 | 3 | 7 |
| 8 | SEC014RA001 | O-RING - I.D. 9.19mm, C.S. 2.62mm, NITRILE 90 | 4 | 8 |
| 9 | SEC010RF002 | O-RING - I.D. 4.42 mm, C.S. 2.62 mm, NITRILE 70 | 1 | 9 |
| | | | | 10 |
| | | | | 11 |
| | | | | 12 |
| | | | | 13 |
| | | | | 14 |
| | | | | 15 |
| | | | | 16 |
| | | | | 17 |
| | | | | 18 |
| | | | | 19 |
| | | | | 20 |



IMPORTANT

WHEN ORDERING SPARES YOU MUST STATE THE FULL PART NUMBER AND THE PRODUCT SERIAL NUMBER - FROM THE LABEL
TO PROTECT YOUR WARRANTY ALWAYS USE GENUINE HI-FORCE PARTS.