

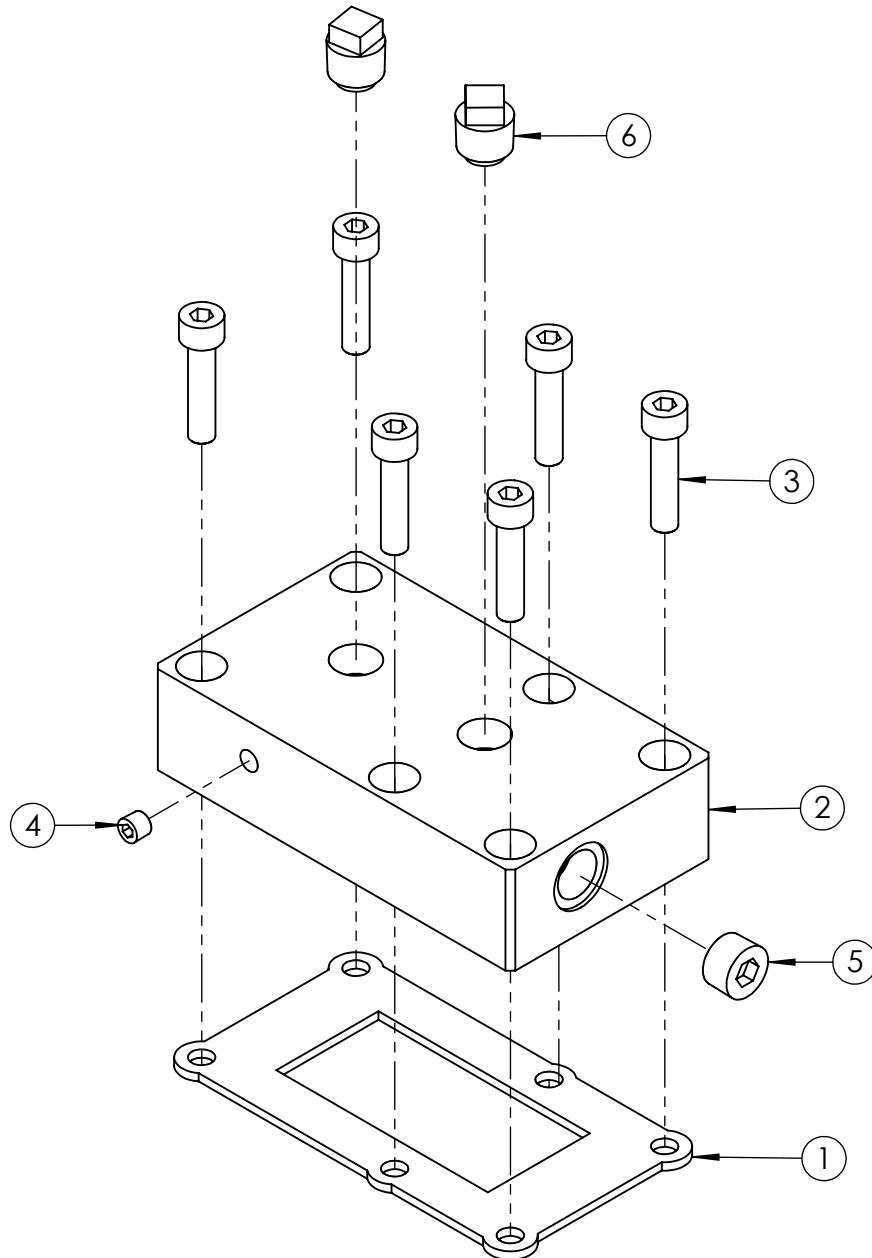
IMPORTANT

WHEN ORDERING SPARES YOU MUST STATE THE FULL PART NUMBER AND THE
PRODUCT SERIAL NUMBER - FROM THE LABEL
TO PROTECT YOUR WARRANTY ALWAYS USE GENUINE HI-FORCE PARTS.

ITEM NO.	PART NUMBER	DESCRIPTION	QTY.	SPARE PARTS	SERVICE PARTS	ITEM NO.	PART NUMBER	DESCRIPTION	QTY.	SPARE PARTS	SERVICE PARTS	REVISION
1	TAC040AS001	40L TANK	1			23	MCC000SB001	QUILL SHAFT ADAPTOR	1			1
2	15482	TANK GASKET	1	X	✓	24	PCC004WC001	SHAFT KEY	1			2 6333
3	BLC021YT010	SIGHT GLASS HGF.13 BLACK OIL LEVEL INDICATOR	2			25	PCC008KE001	SHAFT KEY	1			3
4	DCSF00328	DOUBLE SIDED MAGNET	1			26	CSC222AS001	ENGINE FLANGE	1			4
5	NUC021-B000	1/2" BSP LOCK NUT	2			27	BLC010LB035	M10 x 35 SOCKET CAP HEAD SCREW	4			5
6	FPC013PC001	1/2" BSP PLUG - HEX SOCKET	1			28	WAC010AB000	M10 ZINC PLATED FLAT WASHER	7			6
7	TYPE200-24	200 SERIES PUMP UNIT	1			29	WAC010BZ000	M10 SPRING WASHER	7			7
8	FFC028PZ001	FILLER/BREATHER	1			30	BLC010LB050	M10 x 50 SOCKET CAP HEAD SCREW	3			8
9	BPC025KP001	1" SQ RIBBED INSERT BLACK	4			31	FAS005ME010	SOCKET CUP PT SCREW M5 x 10	1			9
10	SEC001KT003	GASKET	1	X	✓	32	MCC000PT001	THROTTLE	1			10
11	PE1_4.5	PETROL MOTOR	1			33	BLC006JD065	M6 X 65 HEX SOCKET CAP HD SCREW	2			11
12	BLC005HF020	M5 x 20 mm HEX SOCKET COUNTERSUNK SCREW	10			34	WAC006AF000	M6 ZINC WASHER	4			12
13	FPC013AC002	FEED PIPE	1			35	NUC006JC000	M6 NYLOK NUT	2			13
14	FFC045MZ001	FILTER	1			<p>NOTE:</p> <p>- ALL PARTS ARE AVAILABLE TO BE ORDERED AS INDIVIDUAL SPARE PARTS (UNLESS MARKED WITH X.)</p> <p>- ALL PARTS MARKED WITH ✓ ARE AVAILABLE SERVICEABLE PARTS FOUND IN: SERVICE KIT HEP-SK1</p> <p>- FOR SUB ASSEMBLIES (ITEM NO.S 7 & 19) PLEASE REFER TO THEIR INDIVIDUAL EVD's.</p>						14
15	TAC000PA001	160 mm LONG SUCTION PIPE	1									15
16	SFC065FA002	BLANKING PLATE	1									16
17	AAN000UP001	60 x 30 mm UNIVERSAL NAME PLATE	1	X								17
18	FAS002HZ001	NO.4 x 3/16 HAMMER DRIVE SCREW	2									18
19	PM1	PORT PLATE (15777)	1									19
20	FPC010PN001	3/8 NPT BLANKING PLUG	1									20
21	15480	ROLL FRAME	1									
22	BLC008KD016	M8 x 16 mm HEX SOCKET CAP HEAD SCREW	4									

IMPORTANT

WHEN ORDERING SPARES YOU MUST STATE THE FULL PART NUMBER AND THE PRODUCT SERIAL NUMBER - FROM THE LABEL TO PROTECT YOUR WARRANTY ALWAYS USE GENUINE HI-FORCE PARTS.



ITEM NO.	PART NUMBER	DESCRIPTION	QTY.	SPARE PARTS	REVISION
1	SEC003KT001	VALVE GASKET	1		1 5717
2	VFC010BF010	CONNECTOR PLATE	1		2
3	BLC008KD035	M8 x 35 mm HEX SOCKET CAP HEAD SCREW	6		3
4	FPC002PN001	1/16" x 7/8" NPT SOCKET PLUG	1		4
5	FPC010PN002	3/8" x 7/8" NPT SOCKET PLUG	1		5
6	BPC010SP004	3/8 NPT PLASTIC BLANKING PLUG (RED)	2		6
					7
					8
					9
					10
					11
					12
					13
					14
					15
					16
					17
					18
					19
					20

NOTE:

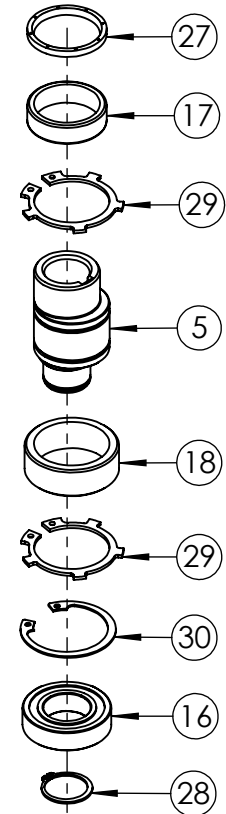
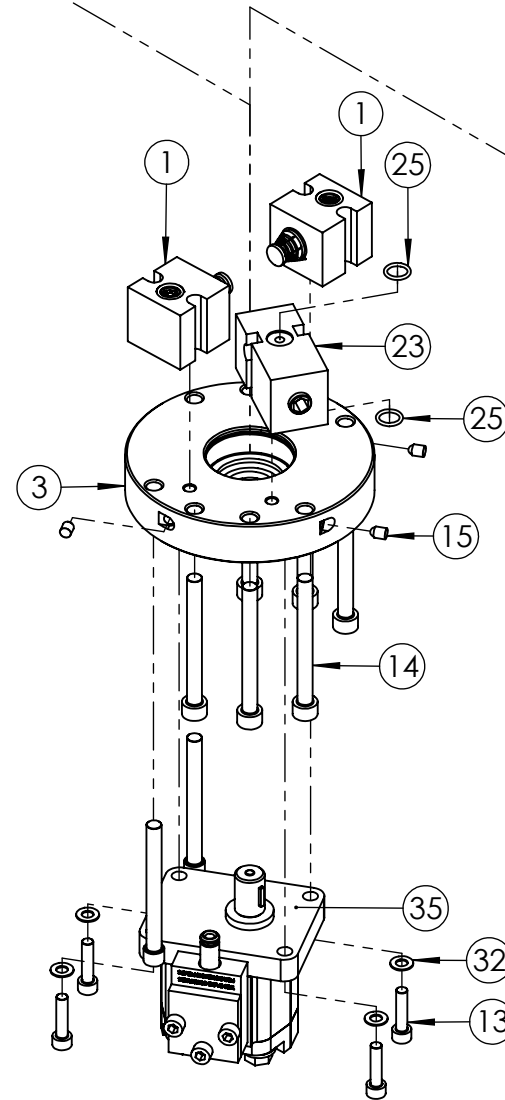
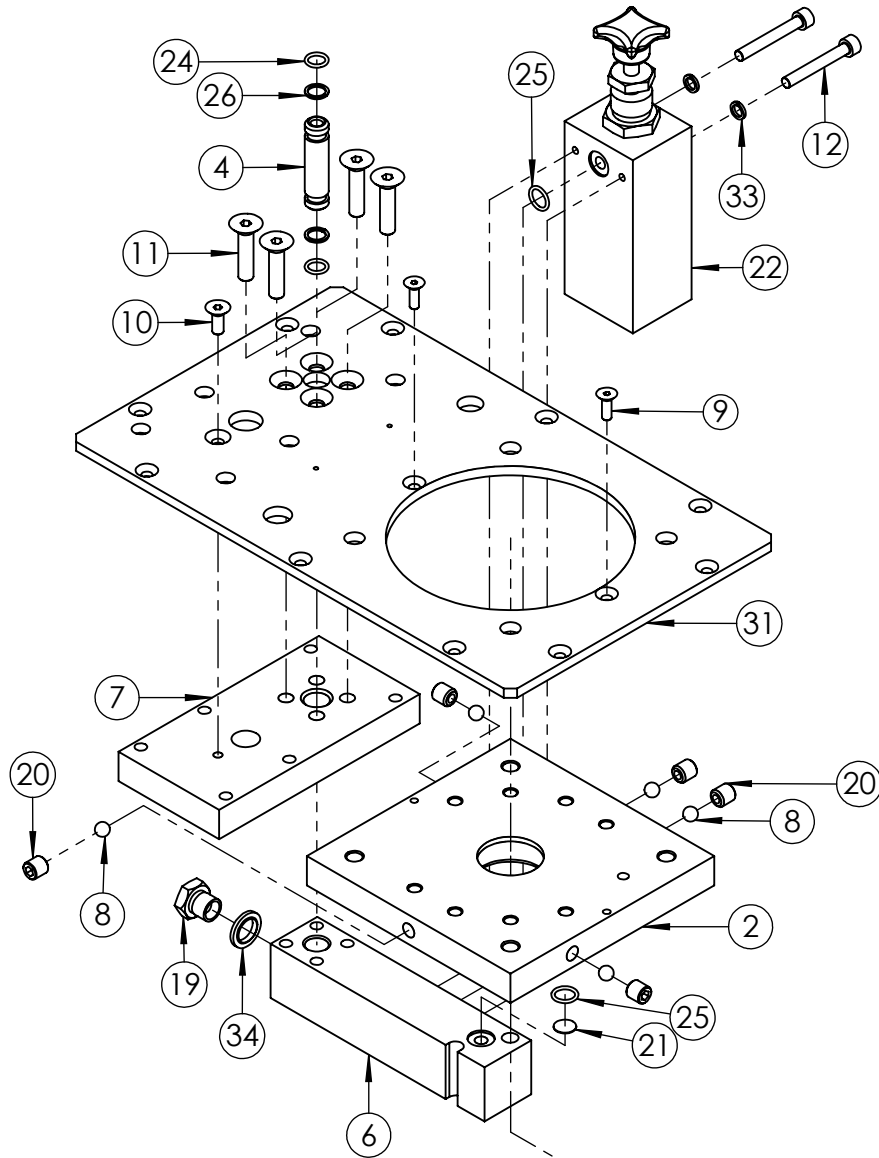
- ALL PARTS ARE AVAILABLE TO BE ORDERED AS SPARE PARTS (UNLESS MARKED WITH ✕).

IMPORTANT

WHEN ORDERING SPARES YOU MUST STATE THE FULL PART NUMBER AND THE PRODUCT SERIAL NUMBER - FROM THE LABEL TO PROTECT YOUR WARRANTY ALWAYS USE GENUINE HI-FORCE PARTS.

REVISION

1	5717
2	5866
3	5939
4	
5	
6	
7	
8	
9	
10	
11	
12	
13	
14	
15	
16	
17	
18	
19	
20	



IMPORTANT

WHEN ORDERING SPARES YOU MUST STATE THE FULL PART NUMBER AND THE PRODUCT SERIAL NUMBER - FROM THE LABEL TO PROTECT YOUR WARRANTY ALWAYS USE GENUINE HI-FORCE PARTS.

ITEM NO.	PART NUMBER	DESCRIPTION	QTY.	SPARE PARTS	SERVICE PARTS
1	15494-A	PISTON BLOCK ASSEMBLY	2		
2	15497	UPPER PLATE	1		
3	15499	LOWER PLATE	1		
4	15503	CONNECTOR PIPE	1		
5	15505	24mm DRIVE SHAFT	1		
6	17587	TRANSFER BLOCK	1		
7	17588	VALVE PLATE	1		
8	BAC008SN000	Ø8 mm STEEL BALL GRADE 100	5		
9	BLC005HF016	M5 x 16 mm HEX SOCKET COUNTERSUNK SCREW	2		
10	BLC006JE016	M6 x 16 mm HEX SOCKET COUNTERSUNK SCREW	1		
11	BLC008KF035	M8 x 35 mm HEX SOCKET COUNTERSUNK SCREW	4		
12	BLC006JC045	M6 x 45 mm HEX SOCKET CAP HEAD SCREW	2		
13	BLC006JD025	M6 x 25 mm HEX SOCKET CAP HEAD SCREW	4		
14	BLC008KC080	M8 x 80 mm HEX SOCKET CAP HEAD SCREW	6		
15	BPC006RS001	SEALING PLUG	3		
16	BSC025MC001	LOWER PLATE BEARING	1		
17	BSC035NC001	UPPER PLATE BEARING	1		
18	BSC040ND001	ECCENTRIC BEARING	1		
19	FAS006GJ010	1/4" BSP HEX HEAD BLANKING PLUG	1		
20	FAS010MA010	M10 X 10 CUP POINT GRUB SCREW	5		
21	FFC012MA001	SUCTION FILTER	1		
22	HPRV1	HIGH PRESSURE R/VALVE	1		
23	LPRV1	LOW PRESSURE R/VALVE	1		
24	SEC013RA001	O-RING - I.D. 9.25mm, C.S. 1.78mm, NITRILE 90	2		✓
25	SEC014RF001	O-RING - I.D. 10.82 mm, C.S. 1.78 mm, NITRILE 90	4		✓

ITEM NO.	PART NUMBER	DESCRIPTION	QTY.	SPARE PARTS	SERVICE PARTS	REVISION
26	SEC013BA001	BACK-UP RING - PTFE, SOLID SPLIT	2		✓	1 5717
27	SEC035WE001	UPPER PLATE OIL SEAL	1			2 5866
28	STC025AA001	EXTERNAL CIRCLIP - 25 x 1.2 mm D1400/025	1			3 5939
29	STC040AA001	EXTERNAL CIRCLIP - 40 x 1.75 mm D2100/0400	2			4
30	STC047BA001	INTERNAL CIRCLIP - 47 x 1.75 mm D1300/0470	1			5
31	TAC000BA003	COVER PLATE	1			6
32	WAC006AF000	M6 ZINC WASHER	4			7
33	WAC006BC001	M6 SPRING ZINC WASHER (SQUARE SECTION)	2			8
34	WAC007HD000	1/4" BSP SELF CENTERING BONDED WASHER	1			9
35	PMA048GZ001	GP48 GEAR PUMP ASSEMBLY	1			10

NOTE:

- ALL PARTS ARE AVAILABLE TO BE ORDERED AS SPARE PARTS (UNLESS MARKED WITH X).

- ONLY PARTS MARKED WITH ✓ ARE AVAILABLE AS BOTH SPARE PARTS OR SERVICEABLE PARTS, FROM **HEP-SK1 PUMP SERVICE KIT**. (REFER TO HEP-SK1: PUMP SERVICE KIT EVD FOR FULL PARTS LIST)

- IF ITEM NO. 23 (**LPRV1**) IS ORDERED AS A SPARE PART, THIS ALREADY COMES WITH 2 OFF ITEM NO. 25 (**SEC014RF001**). THEREFORE THESE ARE NOT REQUIRED TO BE ORDERED SPERATELY.

- FOR SUB ASSEMBLIES - ITEM NO. 1 (**15494-A**) & ITEM NO. 35 (**PMA048GZ001**) REFER TO THEIR INDIVIDUAL EVD's.

IMPORTANT

WHEN ORDERING SPARES YOU MUST STATE THE FULL PART NUMBER AND THE PRODUCT SERIAL NUMBER - FROM THE LABEL TO PROTECT YOUR WARRANTY ALWAYS USE GENUINE HI-FORCE PARTS.