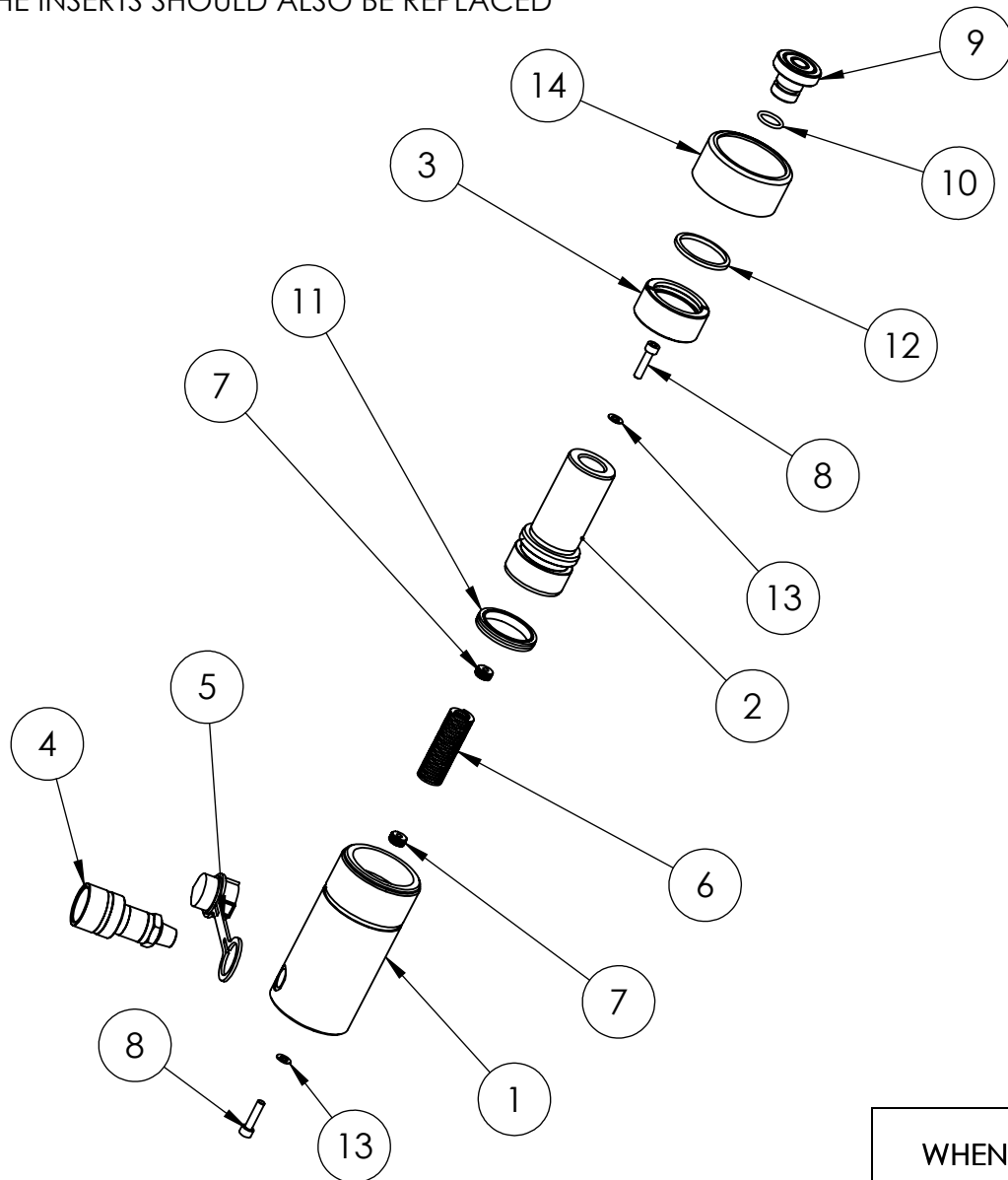


NOTE: IF SPRING IS REPLACED
THE INSERTS SHOULD ALSO BE REPLACED



ITEM	DESCRIPTION	UP TO SERIAL AV0915		FROM SERIAL AV0915	
		QTY	PART NUMBER	QTY	PART NUMBER
1	CYLINDER	1	CBC051SC001	1	CBC051SC001
2	PISTON	1	PRC051BC001	1	PRC051BC002
3	STOP RING	1	SRC041WE001	1	SRC041WE002
4	COUPLER	1	CF1	1	CF1
5	DUST COVER	1	PPC1	1	PPC1
6	SPRING	1	SPC022SD001	1	SPC022SD001
7	INSERT	2	SIC013TB001	2	SIC013TB001
8	SOCKET CAP HEAD SCREW	2	X	2	X
9	SADDLE	1	HA15	1	HA15
10	O-RING	1	X	1	X
11	PISTON SEAL	1	X	1	X
12	WIPER	1	X	1	X
13	WASHER	2	X	2	X
14	THREAD PROTECTOR	1	PTP070TP015	1	PTP070TP015
	SERVICE KIT	1	HSS15TP1-K	1	HSS15TP2-K

NOTE: ITEMS MARKED 'X' ARE ONLY AVAILABLE IN RESPECTIVE SERVICE KITS.

IMPORTANT

WHEN ORDERING SPARES YOU MUST STATE THE FULL PART NUMBER AND THE
PRODUCT SERIAL NUMBER - FROM THE LABEL
TO PROTECT YOUR WARRANTY ALWAYS USE GENUINE HI-FORCE PARTS.