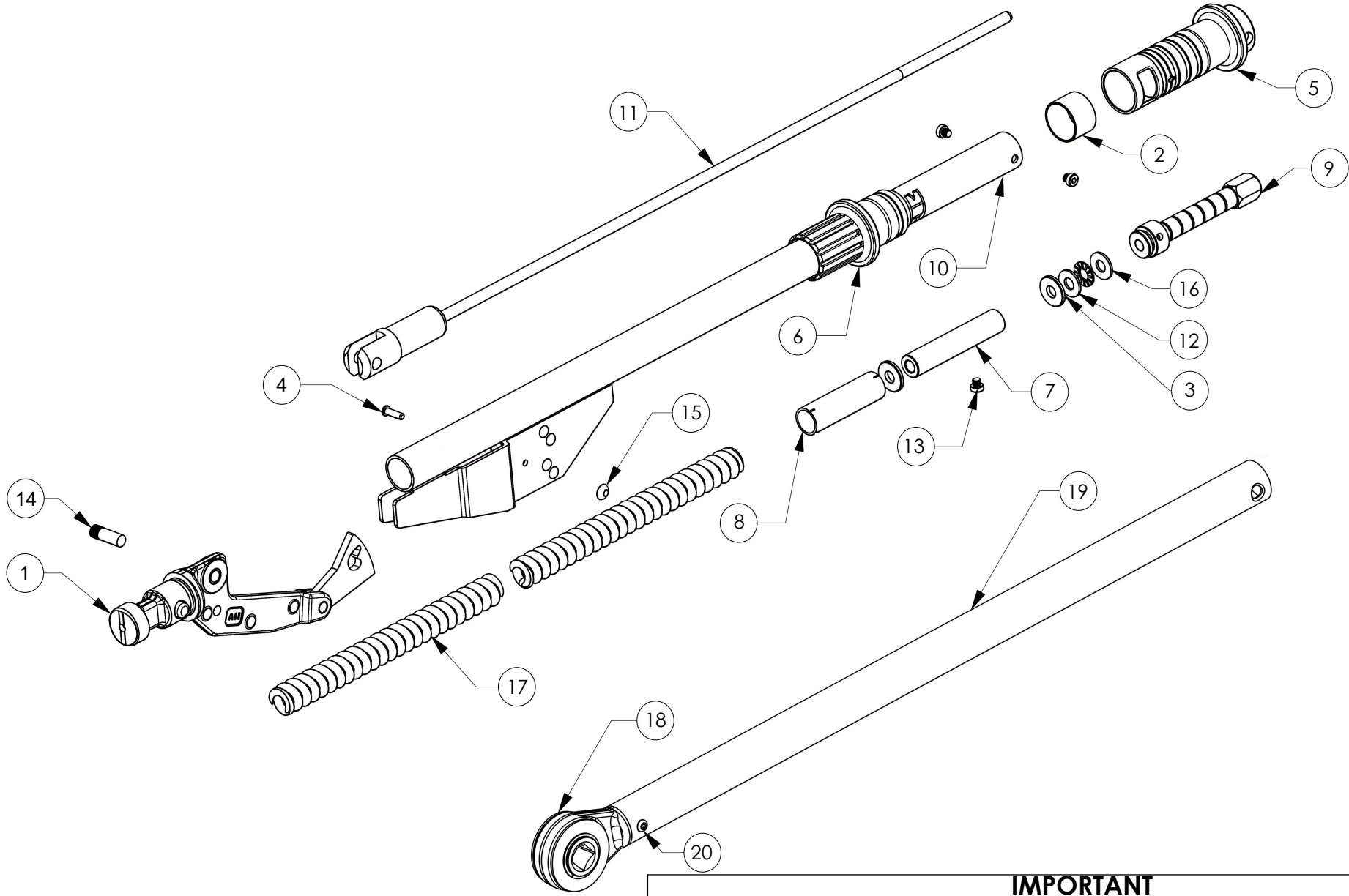


1	
2	6112
3	
4	
5	
6	
7	
8	
9	
10	
11	
12	
13	
14	
15	
16	
17	
18	
19	
20	



IMPORTANT
WHEN ORDERING SPARES YOU MUST STATE THE FULL PART NUMBER AND THE
PRODUCT SERIAL NUMBER - FROM THE LABEL
TO PROTECT YOUR WARRANTY ALWAYS USE GENUINE HI-FORCE PARTS.

ITEM NO.	PART NUMBER	DESCRIPTION	QTY.	SPARE PARTS
1	121002	LEVER ARM ASSY INDUSTRIAL	1	
2	121004	LENS 30 mm CLEAR	1	
3	121005	SPRING BOSS 25 mm	2	
4	121006	CAM PIN	1	
5	121008	HANDLE 30 mm PLASTIC REAR	1	
6	121009	HANDLE 30 mm PLASTIC FRONT	1	
7	121010	SCALE MOUNT	1	
8	121011	SCALE TUBE 75 mm	1	
9	121016	ADJUSTER NUT ASSY	1	
10	121020	BODY ASSY	1	x
11	121024	PLUNGER ASSY	1	x
12	12216.01	HARDENED THRUST WASHER	2	
13	254111	M6 x 5 LOW HEAD CAP SCREW	3	
14	26203	KNURLED PIN FOR IND. PLUNGER TO FORK END	1	
15	265141	5mm AXLE CAP STARLOCK	1	
16	27201	BRG THRUST NEEDLE ROLLER TORRINGTON NO NTA613	1	
17	28150	INDUSTRIAL - N COMPRESSION SPRING	2	
18	121026	INDUSTRIAL RATCHET ASSY	1	
19	121040.BLK	RATCHET TUBE 5R-N PAINTED BLACK METALLIC	1	
20	25578	M6 x 20 SCKT BUTTON HEAD SCREW SCR ISO 7380-1 A2 SS	1	

NOTE:

- ALL PARTS ARE AVAILABLE TO BE ORDERED AS SPARE PARTS (UNLESS MARKED WITH **x**)

REVISION

1	
2	6112
3	
4	
5	
6	
7	
8	
9	
10	
11	
12	
13	
14	
15	
16	
17	
18	
19	
20	

IMPORTANT

WHEN ORDERING SPARES YOU MUST STATE THE FULL PART NUMBER AND THE PRODUCT SERIAL NUMBER - FROM THE LABEL TO PROTECT YOUR WARRANTY ALWAYS USE GENUINE HI-FORCE PARTS.