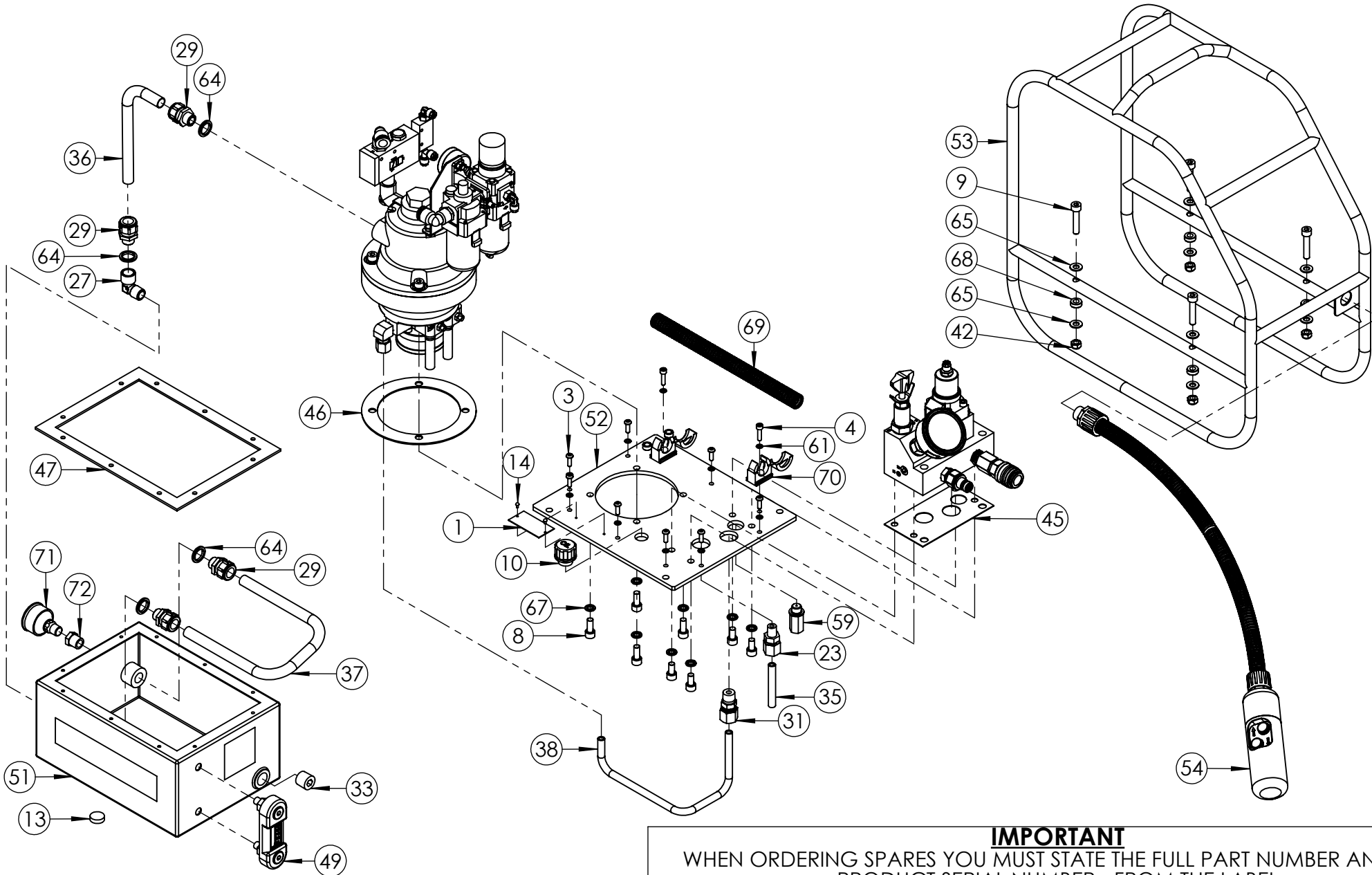
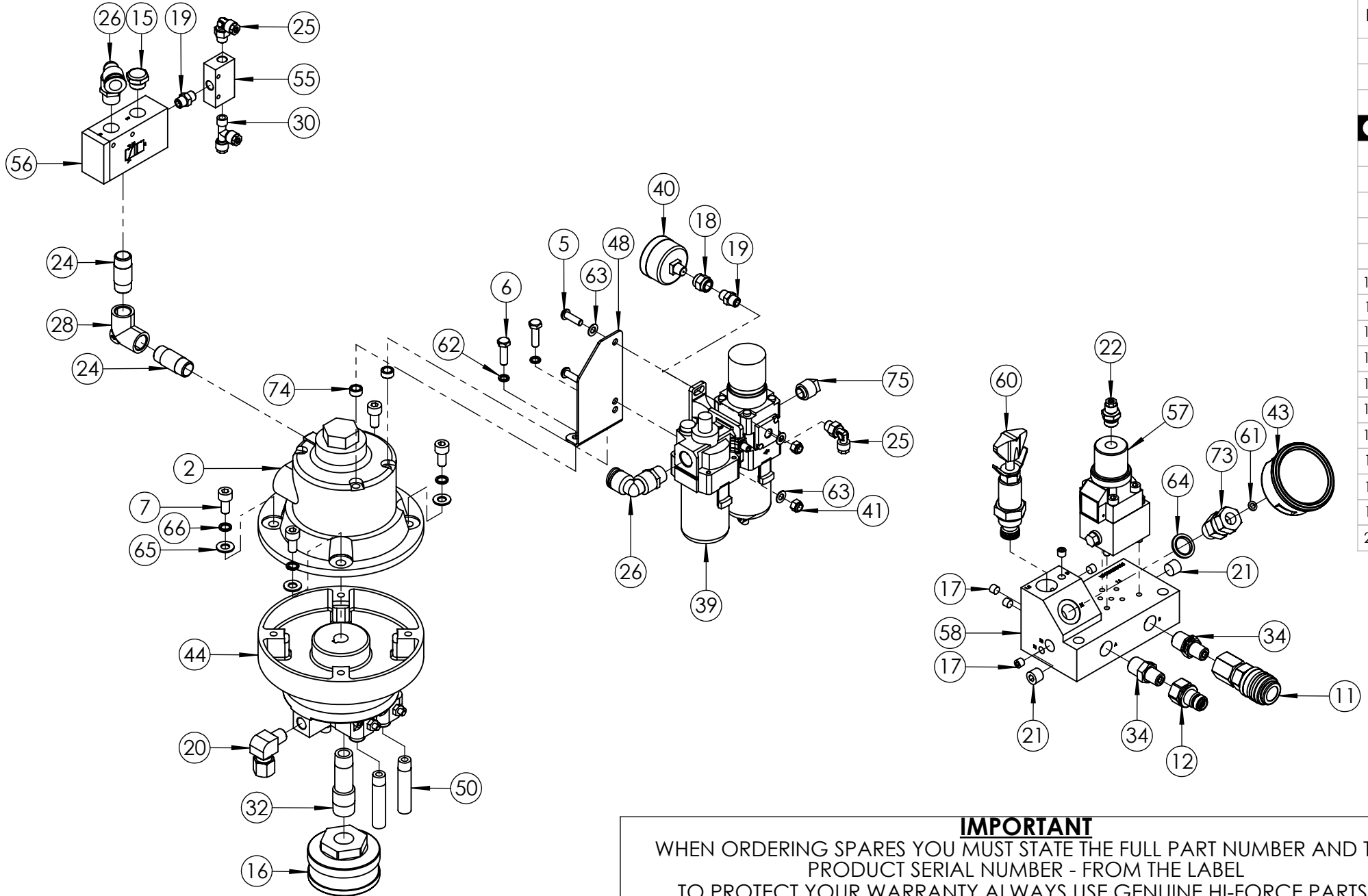


REVISION

1	5227
2	5601
3	6171
4	6294
5	
6	
7	
8	
9	
10	
11	
12	
13	
14	
15	
16	
17	
18	
19	
20	



IMPORTANT
WHEN ORDERING SPARES YOU MUST STATE THE FULL PART NUMBER AND THE
PRODUCT SERIAL NUMBER - FROM THE LABEL
TO PROTECT YOUR WARRANTY ALWAYS USE GENUINE HI-FORCE PARTS.



REVISION

1	5227
2	5601
3	6171
4	6294
5	
6	
7	
8	
9	
10	
11	
12	
13	
14	
15	
16	
17	
18	
19	
20	

IMPORTANT
WHEN ORDERING SPARES YOU MUST STATE THE FULL PART NUMBER AND THE PRODUCT SERIAL NUMBER - FROM THE LABEL TO PROTECT YOUR WARRANTY ALWAYS USE GENUINE HI-FORCE PARTS.

ITEM NO.	PART NUMBER	DESCRIPTION	QTY.	SPARE PARTS	SERVICE PARTS
1	AAN000UP001	60 x 30 mm UNIVERSAL NAME PLATE	1	X	
2	AM3	MOTOR	1		
3	BLC005HH016	M5 x 16 BUTTON HEAD SCREW	8		
4	BLC005HD020	M5 x 20 SOCKET CAP HEAD SCREW	2		
5	BLC006JH020	M6 x 20 SOCKET BUTTON HEAD SCREW	2		
6	BLC006ZA001	1/4 - 28 UNF x 1" IMPERIAL FULL THD HEX BOLT	2		
7	BLC008KD016	M8 x 16 mm HEX SOCKET CAP HEAD SCREW	8		
8	BLC008KD020	M8 x 20 mm HEX SOCKET CAP HEAD SCREW	4		
9	BLC008KD040	M8 x 40 HEX SOCKET CAP HEAD SCREW	4		
10	BPC020SP001	FILLER	1		
11	CF4F	COUPLER	1		
12	CM4F	COUPLER	1		
13	DCSF00328	DOUBLE SIDED MAGNET	1		
14	FAS002HZ001	NO.4 x 3/16 HAMMER DRIVE SCREW	2		
15	FFC010RK001	SILENCER	1		
16	FFC045MZ001	FILTER	1		
17	FPC002PN001	1/16"NPTF x 7/8" TAPER PLUG	5		
18	FPC003AC001	1/8" FEMALE SOCKET	1		
19	FPC003NC001	NIPPLE	2		
20	FPC006DB001	FITTING	1		
21	FPC006PN002	PLUG	2		
22	FPC006YC001	STUD COUPLING (AIR)	1		
23	FPC006YN001	MALE CONNECTOR 1/4" NPT x 10mm	1		
24	FPC010NC002	3/8" BSPT MALE BARREL NIPPLE 40 mm 316	2		
25	FPC010DM001	STUD ELBOW (AIR)	2		
26	FPC010DS001	CONNECTOR	2		
27	FPC010FZ001	ELBOW CONNECTOR	1		

ITEM NO.	PART NUMBER	DESCRIPTION	QTY.	SPARE PARTS	SERVICE PARTS
28	FPC010FZ004	3/8" BSP FEMALE EQUAL ELBOW	1		
29	FPC010LK001	MALE CONNECTOR	4		
30	FPC010UM001	TEE	1		
31	FPC010YN001	MALE STUD COUPLER	1		
32	FPC013BA001	REDUCER 1/2" NPT TO 3/8" BSPT	1		
33	FPC013PC001	1/2" BSP PLUG - HEX SOCKET	1		
34	HF27	M/M ADAPTOR	2		
35	HOC006PS020	TUBE	1		
36	HOC015PC002	EXHAUST PIPE	1		
37	HOC015PC006	EXHAUST PIPE	1		
38	HOC006PS025	PRE BENT TUBE	1		
39	MCC000AF011	3/8" BSPP FILTER REGULATOR + LUBRICATOR, FLOW RIGHT TO LEFT	1		
40	PG40	PRESSURE GAUGE	1		
41	NUC006JC000	M6 NYLOK NUT	2		
42	NUC008KC000	M8 NYLOC NUT	4		
43	PG2G	PRESSURE GAUGE	1		
44	PMC014CF002	PUMP HEART	1		
45	SEC001KT007	GASKET	1	X	✓
46	SEC002KT014	PUMP GASKET	1	X	✓
47	SEC003KT009	TANK GASKET	1	X	✓
48	SFC060HA001	BRACKET	1		
49	TAC000FT006	LEVEL TEMP GAUGE	1		
50	TAC000PP001	RETURN PIPE	2		
51	TAC005AR002	TANK	1		
52	TAC005BR005	TANK LID	1		
53	TAC005CS002	WELDED ROLL FRAME	1		
54	VFA003BH004	AIR PENDANT ASSEMBLY	1		
55	VFA003CS002	SHUTTLE VALVE	1		
56	VFA013CD002	PILOT OPERATED VALVE	1		
57	VFC000CD003	4/2 VALVE	1		

REVISION	
1	5227
2	5601
3	6171
4	6294
5	
6	
7	
8	
9	
10	
11	
12	
13	
14	
15	
16	
17	
18	
19	
20	

IMPORTANT
WHEN ORDERING SPARES YOU MUST STATE THE FULL PART NUMBER AND THE PRODUCT SERIAL NUMBER - FROM THE LABEL TO PROTECT YOUR WARRANTY ALWAYS USE GENUINE HI-FORCE PARTS.

ITEM NO.	PART NUMBER	DESCRIPTION	QTY.	SPARE PARTS	SERVICE PARTS
58	VFC010RD015	MANIFOLD BLOCK	1		
59	VRA700AF002	RELIEF VALVE	1		
60	VRC700ZE002	ADJUSTABLE RELIEF VALVE	1		
61	WAC005EC001	M5 X 9 X 1.0 COPPER SEALING WASHER	11	X	✓
62	WAC006BC001	M6 SPRING ZINC WASHER (SQUARE SECTION)	2		
63	WAC006AF000	WASHER	4		
64	WAC010HD000	3/8" BSP DOWTY WASHER	5	X	✓
65	WAC008AB000	M8 PLAIN WASHER	12		
66	WAC008BB000	M8 ZINC PLATED SPRING WASHER	4		
67	WAC008KD000	DOWTY WASHER	8	X	✓
68	WAC008RH001	M8 SADDLE WASHER FOR 16MM TUBE	4		
69	ECC021FN001	FLEXIBLE CONDUIT	1		
70	ECC021HN001	21 mm CONDUIT CLIP FITTING	2		
71	AC980	AIR MOTOR MUFFLER	1	X	
72	FPC010BF005	1/4 NPT (FEMALE) TO 3/8 BSP (MALE) REDUCER	1	X	
73	FPC010GR001	3/8 BSP MALE X 1/4 BSP FEMALE SWIVEL ADAPTOR	1		
74	SFC008VA001	SPACER TUBE	2		
75	BPC010SP004	3/8 NPT PLASTIC BLANKING PLUG (RED)	1		
*	BPC020SP002	FILLER PLUG	1		

NOTE:

- ALL PARTS ARE AVAILABLE TO BE ORDERED AS INDIVIDUAL SPARE PARTS (UNLESS MARKED WITH X).

- ONLY PARTS MARKED WITH ✓ ARE **ONLY** AVAILABLE AS SERVICEABLE PARTS FOUND IN: **HTWP2140PT1-K: SEAL KIT**. (REFER TO **HTWP2140PT1-K** EVD FOR FULL PARTS LIST).

- FOR SUB-ASSEMBLIES (ITEM NO. **54**) REFER TO THEIR INDIVIDUAL EVD's.

- IF ORDERING ITEM NO. **39** - **MCC000AF011**, IT WILL COME COMPLETE WITH ITEM NO. **40** - **PG40**

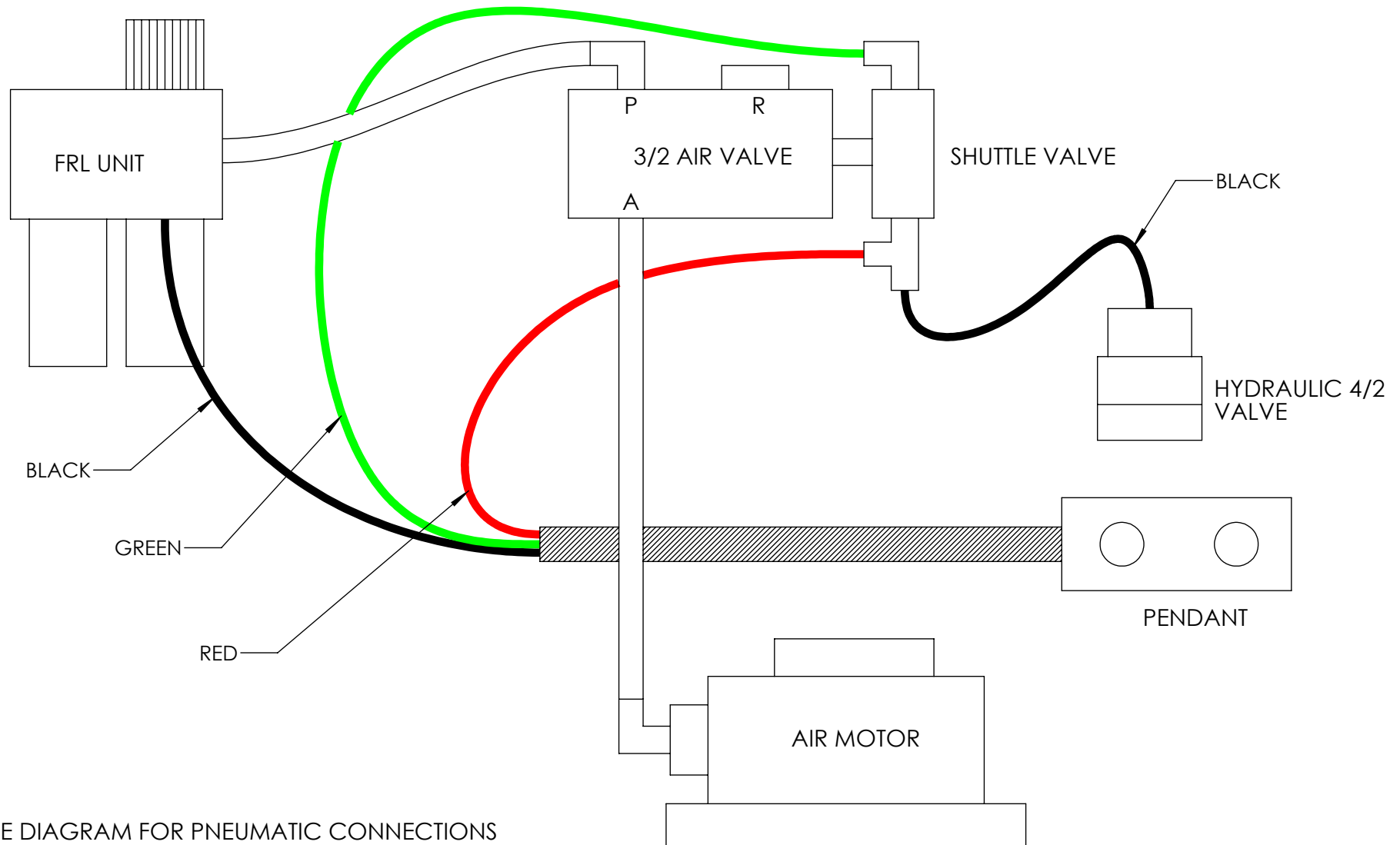
- ITEM NO.s **71** - **AC980** & - **72** - **FPC010BF005** COMES ONLY WITH ITEM NO. **2** - **AM3** & CAN NOT BE ORDERED SEPARATELY.

REVISION

1	5227
2	5601
3	6171
4	6294
5	
6	
7	
8	
9	
10	
11	
12	
13	
14	
15	
16	
17	
18	
19	
20	

IMPORTANT

WHEN ORDERING SPARES YOU MUST STATE THE FULL PART NUMBER AND THE PRODUCT SERIAL NUMBER - FROM THE LABEL TO PROTECT YOUR WARRANTY ALWAYS USE GENUINE HI-FORCE PARTS.



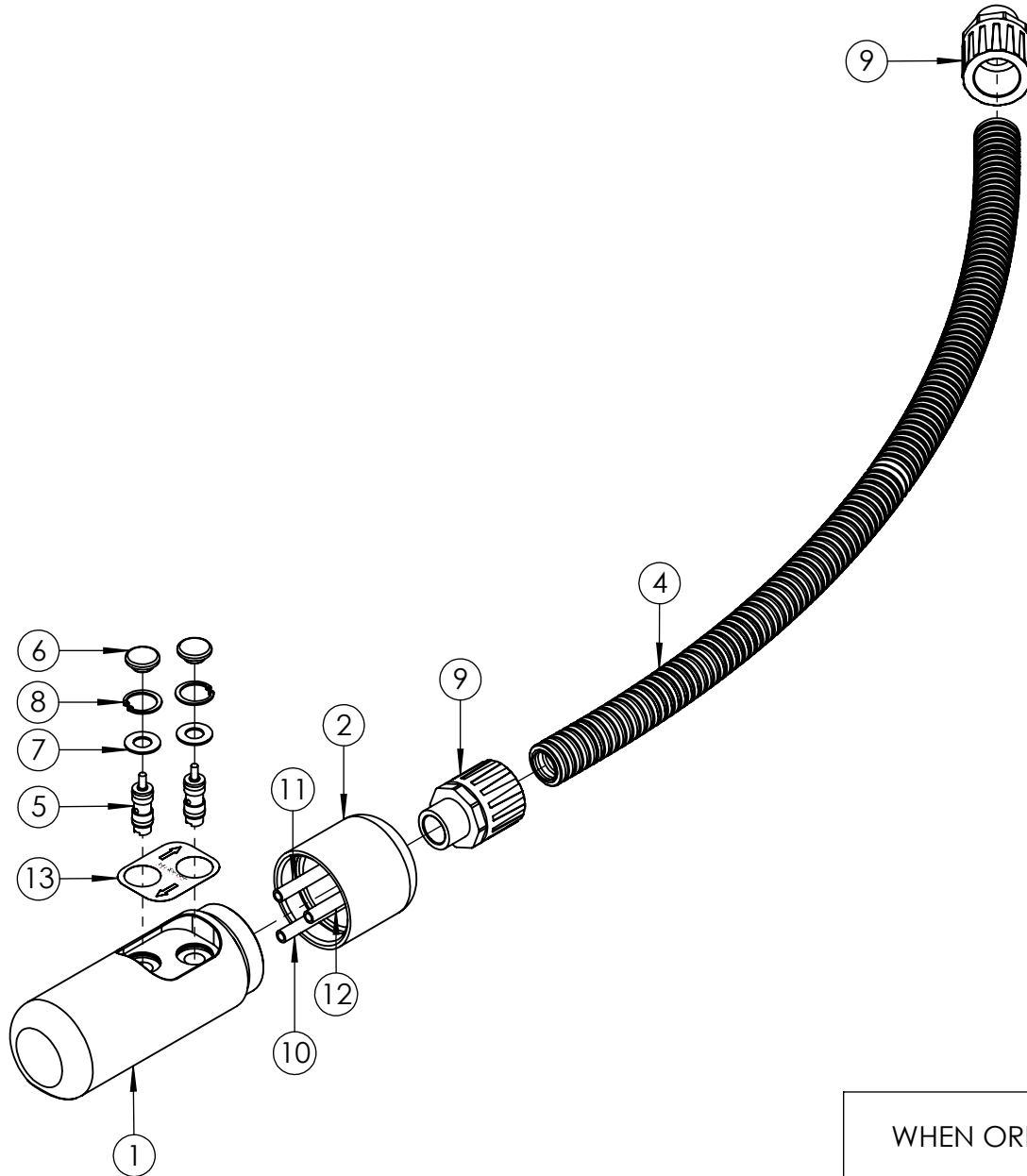
REVISION

1	5227
2	5601
3	6171
4	6294

5	
6	
7	
8	
9	
10	
11	
12	
13	
14	
15	
16	
17	
18	
19	
20	

REFERENCE DIAGRAM FOR PNEUMATIC CONNECTIONS

IMPORTANT
WHEN ORDERING SPARES YOU MUST STATE THE FULL PART NUMBER AND THE
PRODUCT SERIAL NUMBER - FROM THE LABEL
TO PROTECT YOUR WARRANTY ALWAYS USE GENUINE HI-FORCE PARTS.



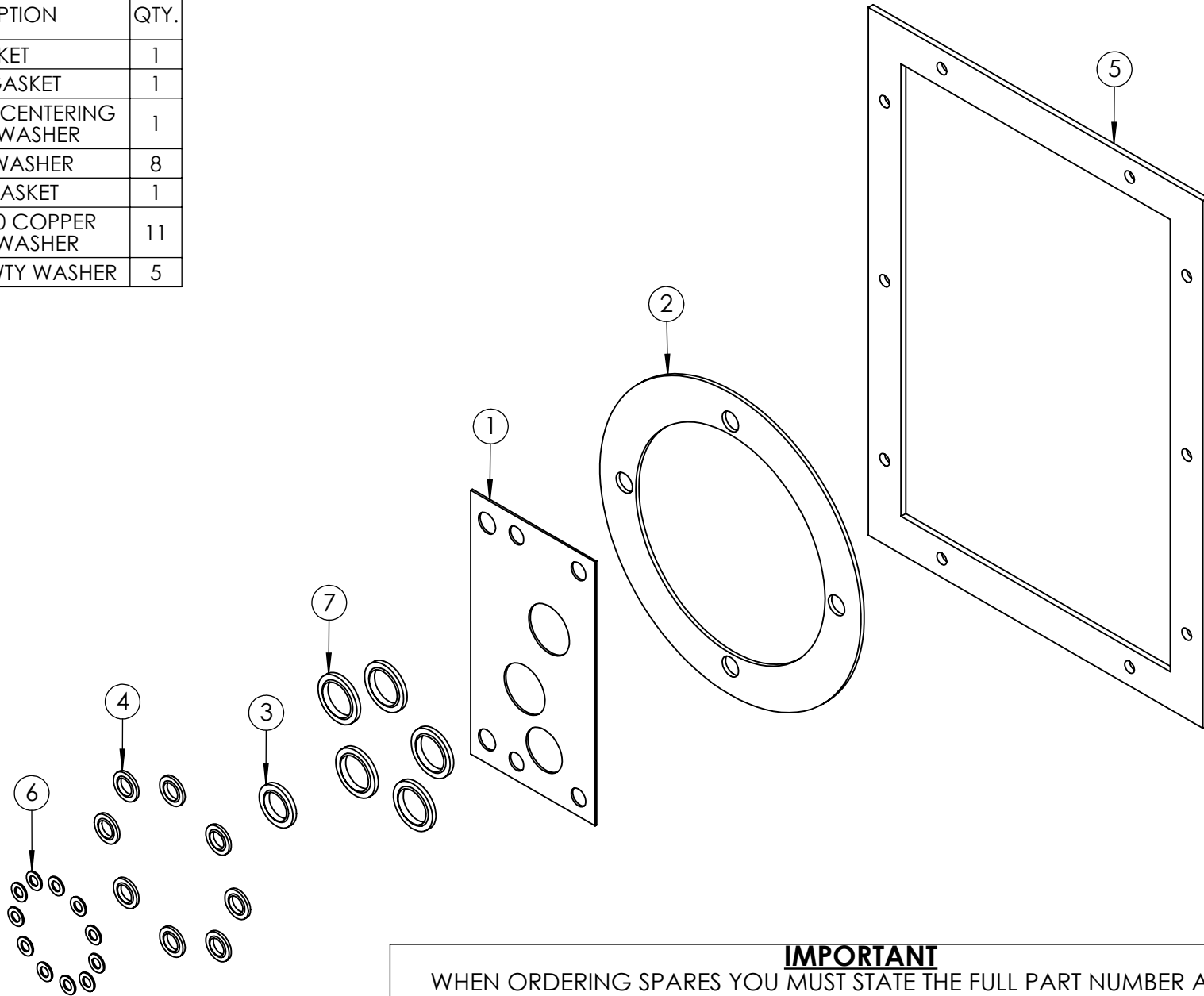
ITEM NO.	PART NUMBER	DESCRIPTION	QTY.	REVISION
1	VFC003BH006	PENDANT BODY	1	1 6199
2	VFC003BH007	PENDANT COVER	1	2
3	FPC006KS001	HOSE INSERT	3	3
4	ECC021FN001	FLEXIBLE CONDUIT	1	4
5	VFC000CH001	CARTRIDGE VALVE	2	5
6	VFC000CK001	PUSH BUTTON	2	6
7	WAC008JB000	M8 WASHER	2	7
8	STC017BA001	RETAINING CLIP	2	8
9	ECC021SM001	STRAIGHT CONNECTOR	2	9
10	MCC000AP001	BLACK HOSE	1	10
11	MCC000AP002	RED HOSE	1	11
12	MCC000AP003	GREEN HOSE	1	12
13	LAC000WB004	LABEL	1	13
				14
				15
				16
				17
				18
				19
				20

IMPORTANT
WHEN ORDERING SPARES YOU MUST STATE THE FULL PART NUMBER AND THE PRODUCT SERIAL NUMBER - FROM THE LABEL TO PROTECT YOUR WARRANTY ALWAYS USE GENUINE HI-FORCE PARTS.

ITEM NO.	PART NUMBER	DESCRIPTION	QTY.
1	SEC001KT007	GASKET	1
2	SEC002KT014	PUMP GASKET	1
3	WAC007HD000	1/4" BSP SELF CENTERING BONDED WASHER	1
4	WAC008KD000	DOWTY WASHER	8
5	SEC003KT009	TANK GASKET	1
6	WAC005EC001	M5 X 9 X 1.0 COPPER SEALING WASHER	11
7	WAC010HD000	3/8" BSP DOWTY WASHER	5

REVISION

1	6294
2	
3	
4	
5	
6	
7	
8	
9	
10	
11	
12	
13	
14	
15	
16	
17	
18	
19	
20	



IMPORTANT

WHEN ORDERING SPARES YOU MUST STATE THE FULL PART NUMBER AND THE PRODUCT SERIAL NUMBER - FROM THE LABEL TO PROTECT YOUR WARRANTY ALWAYS USE GENUINE HI-FORCE PARTS.