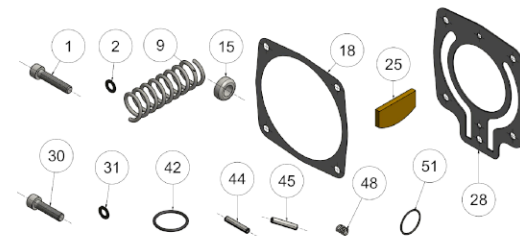


REVISION

1	5861
2	6078
3	6232
4	
5	
6	
7	
8	
9	
10	
11	
12	
13	
14	
15	
16	
17	
18	
19	
20	

SPARE PARTS INCLUDED IN THE SERVICE KIT L
(The equipment includes grease and oil)



IMPORTANT

WHEN ORDERING SPARES YOU MUST STATE THE FULL PART NUMBER AND THE PRODUCT SERIAL NUMBER - FROM THE LABEL TO PROTECT YOUR WARRANTY ALWAYS USE GENUINE HI-FORCE PARTS.

Item No	Part Number	Description	QTY	AVAILABLE SPARE PART	Item No	Part Number	Description	QTY	AVAILABLE SPARE PART
01	D.09.01.0017	Socket Head Cap Screw	4		33	D.01.25.0003	Air Filter	2	
02	D.09.06.0002	Lock Washer	4		34	D.09.02.0004	O-Ring	2	
03	D.01.03.0079	Clutch Cover	1	B	35	D.09.08.0002	Seeger Ring For Bore	1	
04	D.09.11.0008	Retention Ring	1		36	D.09.08.0001	Seeger Ring For Bore	1	
05	D.01.15.0009	Combined Bearing	1		37	D.01.25.0002	Air Filter	1	
06	D.09.13.0007	Retaining Ring, 3/4" Square Drive Shaft	1		38	D.01.12.0002	Valve Spring	1	
07	D.09.02.0007	Retainer O-Ring, 3/4" Square Drive Shaft	1		39	D.01.22.0001	Steel Ball	1	
08L	D.01.04.0145	3/4" Square Drive Shaft - Long	1	F	40	D.09.02.0003	O-Ring 12X3 Mm.	1	
09	D.01.12.0007	Clutch Spring	1		41	D.01.33.0038	Reducer, Air Inlet	1	
10	D.01.05.0003	Clutch Shaft	1		42	D.09.02.0089	O-Ring	1	
11	D.01.06.0008	Clutch Plate	1		43	D.09.12.0033	Roller	1	
12	D.01.07.0003	Cam, Clutch	1		44	D.09.03.0001	Pivot Pin, Trigger (Long)	1	
13	D.01.09.0004	Bushing, Clutch Housing	1		45	D.09.03.0002	Spring Pin	1	
14	D.01.08.0007	Clutch Housing	1		46	D.01.21.0027	Trigger	1	
15	D.01.10.0002	Roller	1		47	D.01.31.0054	Pin	1	
16	D.01.11.0002	Pin, Roller	1		48	D.01.12.0065	Spring	1	
17	D.01.15.0021	Ball Bearing	1		49	D.09.01.0003	Set Screw, Rotation Reverser	1	
18	D.01.17.0013	Front Gasket	2		50	D.01.14.0002	Rotation Reverser Shaft	1	
18	D.01.17.0012	Front Gasket	1		51	D.09.02.0010	O-Ring	2	
19	L.01.0070	Gun Body	1	X	52	D.09.10.0009	Lifting Eye Bolt	1	
20	D.01.15.0018	Ball Bearing	1		53	D.01.35.0021	Spacer	3	
21	L.08.0076	Front End Plate	1	C	55	D.09.06.0048	Spring Lock Washer	3	
22	D.09.12.0012	Roller 4X9,8 Mm.	1		56	D.09.01.0029	Hex Cap Screw	3	
23	D.01.18.0007	Main Motor Housing	1		57	D.01.62.0001	Axial Retention Screw	1	
24	D.01.30.0072	Rotor	1		B	D.01.37.0067	Whole Hammer Case	1	
25	D.01.19.0013	Motor Vane	8		C	D.01.16.0060	Front Motor Housing Complete	1	
26	D.09.12.0005	Roller 4X19,8 Mm.	1		D	D.01.16.0068	Rear Motor Housing Complete	1	
27	L.08.0090	Rear End Plate	1	D	E	D.01.24.0013	Air Inlet Valve	1	
28	D.01.17.0014	Rear Gasket	1		F	D.01.38.0181	3/4" Square Drive Shaft-Long With Retention "O"Ring	1	
29	D.01.02.0162	Motor Cover	1	X	G	D.01.36.0011	Round Side Handle Complete	1	
30	D.09.01.0045	Socket Head Cap Screw	4		H	D.01.23.0018	Silencer	1	
31	D.09.06.0002	Lock Washer	4		L	B.34.0067	Service Kit	1	
32	D.01.32.0014	Silencer Body	1						

REVISION

1	5861
2	6078
3	6232
4	
5	
6	
7	
8	
9	
10	
11	
12	
13	
14	
15	
16	
17	
18	
19	
20	

- ALL PARTS AVAILABLE TO BE ORDERED AS SPARE PARTS, UNLESS MARKED WITH 'X'
- ITEM 08L AVAILABLE AS ITEM 'F' ONLY
- ITEM 3 AVAILABLE AS ITEM 'B' ONLY
- ITEM 21 AVAILABLE AS ITEM 'C' ONLY
- ITEM 27 AVAILABLE AS ITEM 'D' ONLY

www.hi-force.com

IMPORTANT

WHEN ORDERING SPARES YOU MUST STATE THE FULL PART NUMBER AND THE PRODUCT SERIAL NUMBER - FROM THE LABEL TO PROTECT YOUR WARRANTY ALWAYS USE GENUINE HI-FORCE PARTS.