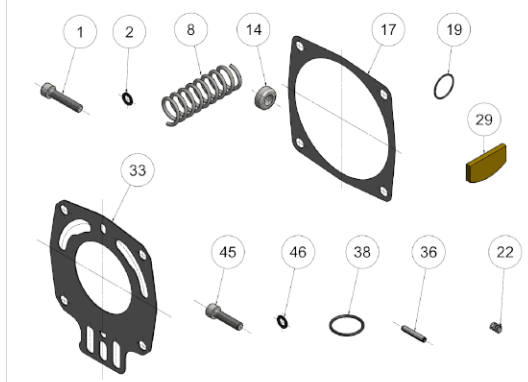


REVISION

1	5861
2	6078
3	6232
4	
5	
6	
7	
8	
9	
10	
11	
12	
13	
14	
15	
16	
17	
18	
19	
20	

SPARE PARTS INCLUDED IN THE SERVICE KIT
(The equipment includes grease and oil)



IMPORTANT
WHEN ORDERING SPARES YOU MUST STATE THE FULL PART NUMBER AND THE PRODUCT SERIAL NUMBER - FROM THE LABEL TO PROTECT YOUR WARRANTY ALWAYS USE GENUINE HI-FORCE PARTS.

IP IMPACT WRENCH

SERIAL NUMBERS

ALL

PRODUCT NO.

IP3200 EVD

SHT 2 OF
2 SHTS

Item No	Part Number	Description	QTY	AVAILABLE SPARE PART	Item No	Part Number	Description	QTY	AVAILABLE SPARE PART
01	D.09.01.0018	Socket head cap screw	4		33	D.01.17.0085	Rear gasket	1	
02	D.09.06.0001	Lock washer	4		34	L.01.0071	Rear body	1	B
03	D.01.03.0080	Clutch cover	1	C	35	D.01.21.0027	Trigger	1	
04	D.09.11.0001	Retention ring g45x55x4	1		36	D.09.03.0001	Pivot pin, trigger (long)	2	
05	D.01.15.0001	Combined bearing	1		37	D.01.31.0045	Valve pin	1	
06	D.09.13.0001	1" Square drive ring	1		38	D.09.02.0089	O-ring	1	
07	D.01.04.0144	1" Square drive shaft	1	F	39	D.01.33.0038	Reducer, air inlet	1	
08	D.01.12.0012	Clutch spring	1		40	D.09.02.0003	O-ring 12x3 mm.	1	
09	D.01.05.0016	Clutch shaft	1		41	D.01.22.0001	Steel ball	1	
10	D.01.06.0047	Clutch plate	1		42	D.01.12.0002	Valve spring	1	
11	D.01.07.0001	Cam, clutch	1		43	D.01.25.0002	Air filter diam. 17,9 Mm.	1	
12	D.01.35.0025	Washer	1		44	D.09.08.0001	Seeger ring for bore diam. 18 mm.	1	
13	D.01.08.0046	Clutch housing	1		45	D.09.01.0105	Socket head cap screw	4	
14	D.01.10.0001	Roller	1		46	D.09.06.0001	Lock washer	4	
15	D.01.11.0001	Pin, roller	1		47	D.01.32.0012	Silencer body	1	
16	D.01.15.0002	Ball bearing	1		48	D.09.02.0004	O-ring	2	
17	D.01.17.0002	Front gasket (0,1 mm.)	1		49	D.01.25.0003	Air filter	2	
17	D.01.17.0001	Front gasket (0,2 mm.)	1		50	D.09.08.0002	Seeger ring for bore	1	
18	L.11.0010	Main body	1	X	51	D.09.10.0001	Lifting eye bolt	1	
19	D.09.02.0002	O-ring 20x1 mm.	2		52	D.01.35.0021	Spacer	3	
20	D.01.14.0032	Rotation reverser shaft	1		53	D.01.26.0006	Round handle	1	G
21	D.01.31.0009	Pin, rotation reverser	1		54	D.09.06.0048	Spring lock washer	3	
22	D.01.12.0003	Spring, rotation reverser	1		55	D.09.01.0029	Hex cap screw	3	
23	D.09.01.0003	Set screw, rotation reverser	1		56	B.31.0005	Fast reverse system DP body	1	
24	D.01.15.0003	Ball bearing	1		B	D.01.01.0178	Whole gun body	1	
25	L.08.0077	Front end plate	1	D	C	D.01.37.0068	Whole hammer case	1	
26	D.09.12.0003	Roller 4x11,8 mm.	1		D	D.01.16.0061	Front motor housing complete	1	
27	D.01.18.0001	Main motor housing	1		E	D.01.16.0002	Rear plate complete	1	
28	D.01.30.0073	Rotor	1		F	D.01.38.0187	1" Square drive shaft	1	
29	D.01.19.0001	Motor vane	8		G	D.01.36.0011	Round side handle complete	1	
30	D.09.12.0005	Roller 4x19,8 mm.	1		H	D.01.24.0013	Air inlet valve	1	
31	L.08.0002	Rear end plate	1		I	D.01.23.0017	Silencer	1	
32	D.01.15.0004	Ball bearing	1		L	B.34.0068	Service kit	1	

REVISION

1	5861
2	6078
3	6232
4	
5	
6	
7	
8	
9	
10	
11	
12	
13	
14	
15	
16	
17	
18	
19	
20	

- ALL PARTS AVAILABLE TO BE ORDERED AS SPARE PARTS, UNLESS MARKED WITH 'X'
- ITEM 7 AVAILABLE AS ITEM 'F' ONLY
- ITEM 3 AVAILABLE AS ITEM 'C' ONLY
- ITEM 34 AVAILABLE AS ITEM 'B' ONLY
- ITEM 25 AVAILABLE AS ITEM 'D' ONLY
- ITEM 53 AVAILABLE AS ITEM 'G' ONLY

IMPORTANT
WHEN ORDERING SPARES YOU MUST STATE THE FULL PART NUMBER AND THE
PRODUCT SERIAL NUMBER - FROM THE LABEL
TO PROTECT YOUR WARRANTY ALWAYS USE GENUINE HI-FORCE PARTS.