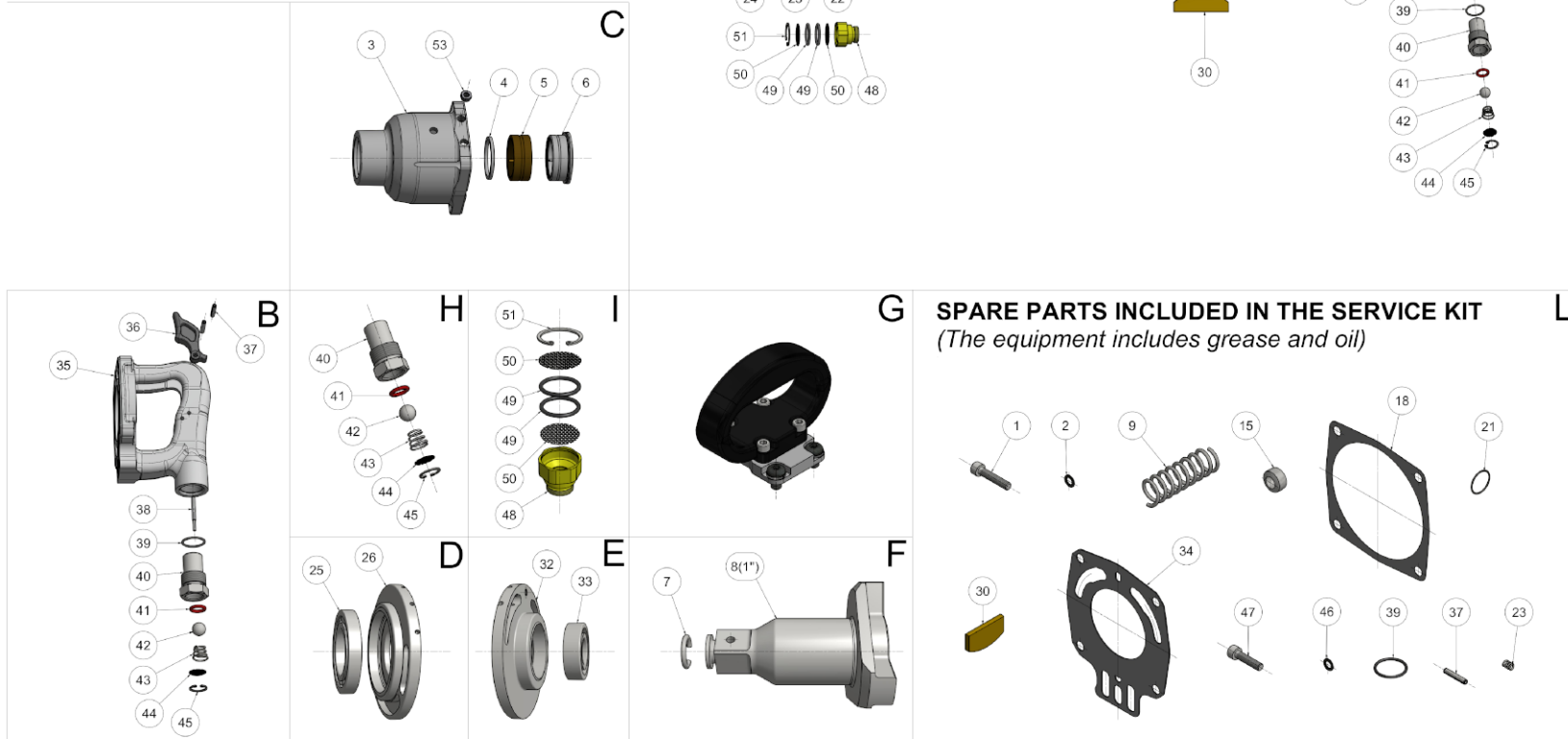


REVISION

1	5861
2	6078
<b>3</b>	<b>6232</b>
4	
5	
6	
7	
8	
9	
10	
11	
12	
13	
14	
15	
16	
17	
18	
19	
20	



**G SPARE PARTS INCLUDED IN THE SERVICE KIT**  
*(The equipment includes grease and oil)*

**IMPORTANT**  
WHEN ORDERING SPARES YOU MUST STATE THE FULL PART NUMBER AND THE  
PRODUCT SERIAL NUMBER - FROM THE LABEL  
TO PROTECT YOUR WARRANTY ALWAYS USE GENUINE HI-FORCE PARTS.

Item No	Part Number	Description	QTY	AVAILABLE SPARE PART	Item No	Part Number	Description	QTY	AVAILABLE SPARE PART
01	D.09.01.0018	Socket Head Cap Screw	4		34	D.01.17.0085	Rear Gasket	1	
02	D.09.06.0001	Lock Washer	4		35	L.01.0071	Rear Body	1	B
03	D.01.03.0081	Clutch Cover	1	C	36	D.01.21.0027	Trigger	1	
04	D.09.11.0002	Retention Ring	1		37	D.09.03.0001	Pivot Pin, Trigger (Long)	2	
05	D.01.15.0060	Roller Bearing	1		38	D.01.31.0045	Valve Pin	1	
06	D.01.15.0006	Combined Bearing	1		39	D.09.02.0089	O-Ring	1	
07	D.09.13.0001	Square drive ring	1		40	D.01.33.0038	Reducer, Air Inlet	1	
08	D.01.04.0142	1"1/2 Square Drive Shaft	1	F	41	D.09.02.0003	O-Ring 12X3 Mm.	1	
09	D.01.12.0010	Clutch Spring	1		42	D.01.22.0001	Steel Ball	1	
10	D.01.05.0004	Clutch Shaft	1		43	D.01.12.0002	Valve Spring	1	
11	D.01.06.0013	Clutch Plate	1		44	D.01.25.0002	Air Filter Diam. 17,9 Mm.	1	
12	D.01.07.0004	Cam, Clutch	1		45	D.09.08.0001	Seeger Ring For Bore Diam. 18 Mm.	1	
12	D.01.09.0006	Bushing, Clutch Housing	1		46	D.09.06.0001	Lock Washer	4	
14	D.01.08.0041	Clutch Housing	1		47	D.09.01.0018	Socket Head Cap Screw	4	
15	D.01.10.0001	Roller	1		48	D.01.32.0012	Silencer Body	2	
16	D.01.11.0003	Pin, Roller	1		49	D.09.02.0004	O-Ring	4	
17	D.01.15.0024	Ball Bearing	1		50	D.01.25.0003	Air Filter	4	
18	D.01.17.0089	Front Gasket (0,1 Mm.)	1		51	D.09.08.0002	Seeger Ring For Bore	2	
18	D.01.17.0090	Front Gasket (0,2 Mm.)	1		52	D.09.10.0001	Lifting Eye Bolt	1	
19	L.11.0011	Main Body	1	X	53	D.01.35.0021	Spacer	3	
20	D.01.14.0035	Rotation Reverser Shaft	1		54	D.01.26.0006	Round Handle	1	G
21	D.09.02.0088	O-Ring	2		55	D.09.06.0048	Spring Lock Washer	3	
22	D.01.31.0009	Pin, Rotation Reverser	1		56	D.09.01.0029	Hex Cap Screw	3	
23	D.01.12.0003	Spring, Rotation Reverser	1		57	B.31.0005	Fast Reverse System	2	
24	D.09.01.0003	Set Screw, Rotation Reverser	1		58	D.01.62.0001	Screw	1	
25	D.01.15.0021	Ball Bearing	1		B	D.01.01.0178	Whole Gun Body	1	
26	L.08.0078	Front End Plate	1	D	C	D.01.37.0069	Whole Hammer Case	1	
27	D.09.12.0003	Roller 4X11,8 Mm	1		D	D.01.16.0062	Front Motor Housing Complete	1	
28	D.01.18.0009	Main Motor Housing	1		E	D.01.16.0021	Rear Plate Complete	1	
29	D.01.30.0071	Rotor	1		F	D.01.38.0177	1" Square Drive Shaft	1	
30	D.01.19.0014	Motor Vane	8		G	D.01.36.0011	Round Side Handle Complete	1	
31	D.09.12.0005	Roller 4X19,8 Mm.	1		H	D.01.24.0013	Air Inlet Valve	1	
32	L.08.0021	Rear End Plate	1	E	I	D.01.23.0017	Silencer	1	
33	D.01.15.0004	Ball Bearing	1		L	B.34.0069	Service Kit	1	

REVISION

1	5861
2	6078
<b>3</b>	<b>6232</b>
4	
5	
6	
7	
8	
9	
10	
11	
12	
13	
14	
15	
16	
17	
18	
19	
20	

- ALL PARTS AVAILABLE TO BE ORDERED AS SPARE PARTS, UNLESS MARKED WITH 'X'
- ITEM 8 AVAILABLE TO BE ORDERED AS ITEM 'F' ONLY
- ITEM 3 AVAILABLE TO BE ORDERED AS ITEM 'C' ONLY
- ITEM 26 AVAILABLE TO BE ORDERED AS ITEM 'D' ONLY
- ITEM 35 AVAILABLE TO BE ORDERED AS ITEM 'B' ONLY
- ITEM 54 AVAILABLE AS ITEM 'G' ONLY

**IMPORTANT**  
WHEN ORDERING SPARES YOU MUST STATE THE FULL PART NUMBER AND THE PRODUCT SERIAL NUMBER - FROM THE LABEL TO PROTECT YOUR WARRANTY ALWAYS USE GENUINE HI-FORCE PARTS.