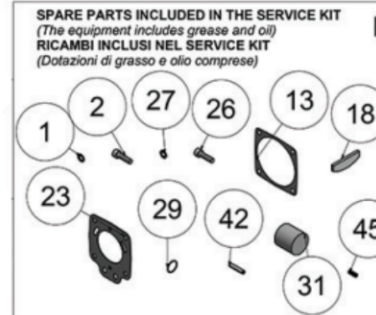


REVISION

1	6232
2	
3	
4	
5	
6	
7	
8	
9	
10	
11	
12	
13	
14	
15	
16	
17	
18	
19	
20	



IMPORTANT

WHEN ORDERING SPARES YOU MUST STATE THE FULL PART NUMBER AND THE PRODUCT SERIAL NUMBER - FROM THE LABEL TO PROTECT YOUR WARRANTY ALWAYS USE GENUINE HI-FORCE PARTS.

REVISION

Item No	Part Number	Description	QTY	SERVICE PARTS	Item No	Part Number	Description	QTY	SERVICE PARTS
01	D.09.06.0003	Lock Washer	4		27	D.09.06.0003	Lock Washer	4	
02	D.09.01.0015	Socket Head Cap Screw	4		28	D.01.14.0003	Rotation Reverser Shaft	1	
03	D.09.11.0006	Oil Seal	1		29	D.09.02.0013	O-Ring Bushing Rotation Reverser Shaft	2	
04	D.01.03.0105	Clutch Cover	1	C	30	D.01.13.0009	Bushing, Rotation Reverser Shaft	1	
05	D.01.13.0019	Hammer Case Bushing	1		31	D.01.40.0003	Muffler Foam	1	
06	D.09.13.0003	Retaining Ring, 1/2" Square Drive Ring	1		32	D.01.25.0019	Air Filter	1	
07	D.09.02.0020	O-Ring 6,75 X 1,95 Mm.	1		33	D.09.08.0004	Seeger Ring For Bore Diam. 25 Mm.	1	
08	D.01.38.0079	1/2" Square Drive Shaft with hole	1	F	34	D.01.33.0004	Reducer, Air Inlet	1	
09	D.01.08.0004	Hammer Frame	1		35	D.01.24.0003	Air Inlet Reducer With Regulator	1	
10	D.01.06.0005	Hammer	2		36	D.01.25.0006	Air Filter	1	
11	D.01.29.0002	Hammer Pin	2		37	D.01.12.0009	Valve Spring	1	
12	D.01.35.0002	Spacer	1		38	D.01.22.0004	1/2" Stainless Ball	1	
13	D.01.17.0006	Front Gasket	1		39	D.09.02.0021	Valve Seat	1	
13	D.01.17.0007	Front Gasket	1		40	D.01.35.0012	Valve Seat Support	1	
14	L.01.0018	Gun Body	1	X	41	D.01.31.0026	Valve Pin	1	
15	D.01.15.0017	Ball Bearing	1		41	D.01.31.0002	Valve Pin	1	
16	L.08.0009	Front End Plate	1		42	D.09.03.0002	Spring Pin	2	
17	D.01.30.0006	Rotor	1		43	D.01.21.0001	Trigger	1	
18	D.01.19.0006	Motor Vane	6		44	D.01.31.0003	Pin, Rotation Reverser	1	
19	D.01.18.0005	Main Motor Housing	1		45	D.01.12.0004	Spring, Rotation Reverser	1	
20	D.09.12.0010	Stop, Pin Motor	1		46	D.09.01.0010	Set Screw, Rotation Reverser	1	
21	L.08.0010	Rear End Plate	1	E	C	D.01.37.0098	Whole Hammer Case With Bushing	1	
22	D.01.15.0022	Ball Bearing	1		D	D.01.16.0009	Front Motor Housing Complete	1	
23	D.01.17.0008	Rear Gasket	1		E	D.01.16.0010	Rear Motor Housing Complete	1	
24	D.01.02.0003	Motor Cover, Rear	1	X	F	D.01.38.0001	1/2" Square Drive Shaft - With Retention "O" Ring	1	
25	D.01.28.0003	Hanger	1		G	B.34.0026	Air Inlet Kit	1	
26	D.09.01.0015	Socket Head Cap Screw	4		H	B.34.0027	Air Inlet Kit With Regulator	1	
					L	B.34.0006	Service Kit	1	

1	6232
2	
3	
4	
5	
6	
7	
8	
9	
10	
11	
12	
13	
14	
15	
16	
17	
18	
19	
20	

NOTE:

- ALL PARTS ARE AVAILABLE TO BE ORDERED AS SPARE PARTS, UNLESS MARKED WITH 'X'
- ITEM 4 AVAILABLE AS ITEM 'C' ONLY
- ITEM 8 AVAILABLE AS ITEM 'F' ONLY
- ITEM 21 AVAILABLE AS ITEM 'E' ONLY

IMPORTANT

WHEN ORDERING SPARES YOU MUST STATE THE FULL PART NUMBER AND THE PRODUCT SERIAL NUMBER - FROM THE LABEL TO PROTECT YOUR WARRANTY ALWAYS USE GENUINE HI-FORCE PARTS.