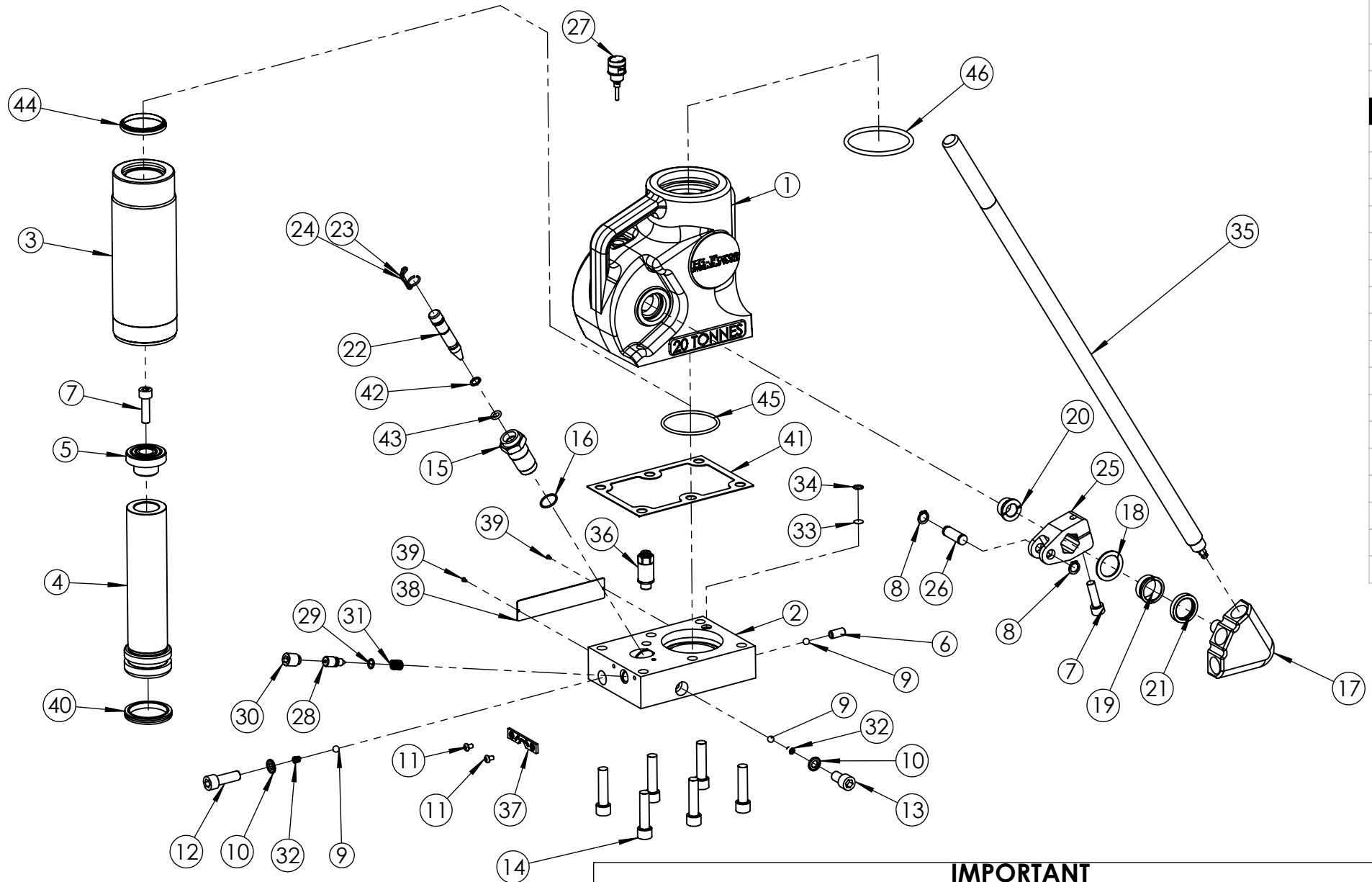


REVISION

1	5498
2	6151
3	6181
4	
5	
6	
7	
8	
9	
10	
11	
12	
13	
14	
15	
16	
17	
18	
19	
20	



IMPORTANT
WHEN ORDERING SPARES YOU MUST STATE THE FULL PART NUMBER AND THE
PRODUCT SERIAL NUMBER - FROM THE NAMEPLATE
TO PROTECT YOUR WARRANTY ALWAYS USE GENUINE HI-FORCE PARTS.

JAH ALUMINIUM JACK

SERIAL NUMBERS

FROM BU4969

PRODUCT NO.

JAH620

SHT 2 OF
3 SHTS

ITEM NO.	PART NUMBER	DESCRIPTION	QTY.	SPARE PARTS	SERVICE PARTS	ITEM NO.	PART NUMBER	DESCRIPTION	QTY.	SPARE PARTS	SERVICE PARTS
1	JHC060CB003	620 CISTERN	1			34	STC013BA000	RETAINING CLIP	1		
2	JHC060BB004	620 BASE	1			35	HLA022BK001	JAH HANDLE ASSEMBLY	1		
3	JHC060LB005	620 LINER	1			36	VRA001AF002	RELIEF VALVE	1		
4	JHC060PB005	620 PLAIN RAM	1			37	JHC000GZ001	RELEASE PLATE	1		
5	JHC060AB002	RAM CAP	1			38	LAC000JC001	NAMEPLATE 131 x 30 mm	1	✘	
6	FAS010MA020	M10 x 20 CUP POINT SCREW	1			39	FAS002HZ001	NO.4 x 3/16 HAMMER DRIVE SCREW	2		
7	BLC010LD035	M10 x 35 SOCKET CAP HEAD SCREW	2			40	SEC060GA001	PISTON SEAL	1	✘	✓
8	STC011AA001	TUMBLER CIRCLIP N1400/0050	2			41	JHC060YB001	20T BASE GASKET	1	✘	✓
9	BAC008SN000	Ø8 mm STEEL BALL GRADE 100	3			42	SEC014BA001	BACK UP RING	1	✘	✓
10	WAC012KD000	DOWTY WASHER	2	✘	✓	43	SEC014RA001	O-RING - I.D. 9.19mm, C.S. 2.62mm, NITRILE 90	1	✘	✓
11	BLC005HH008	M5 x 8 BUTTON HEAD SCREW	2			44	SEC051XE003	WIPER	1	✘	✓
12	BLC012MD035	M12 x 35 SOCKET CAP HD SCREW	1			45	SEC075RA003	ORING	1	✘	✓
13	BLC012MD020	M12 x 20 SOCKET CAP HD SCREW	1			46	SEC089RA002	O-RING - I.D. 78.74 mm, C.S. 5.34 mm, NITRILE 70	1	✘	✓
14	BLC012MC050	M12 X 50mm, HEX SOCKET CAP HEAD SCREW	6								
15	JHC000KZ002	PUMP BARREL	1								
16	SEC024RF001	O-RING - I.D. 20.35mm, C.S. 1.78mm, NITRILE 70	1	✘	✓						
17	JHC000QZ002	QUADRANT SHAFT	1								
18	JHC000QS001	SPACER	1								
19	BSC028LC002	QUADRANT SHAFT OUTER BEARING	1								
20	BSC017LC001	QUADRANT SHAFT INNER BEARING	1								
21	SEC028ME001	ROTARY SHAFT SEAL	1								
22	JHC000UZ001	PUMP PLUNGER	1								
23	JHC000UZ002	PUMP PLUNGER CIRCLIP	1								
24	JHC000UZ003	PUMP PLUNGER CIRCLIP FASTENER	1								
25	JHC000JZ001	JACK TUMBLER	1								
26	JHC000TZ001	TUMBLER ROLLER	1								
27	JHA000DA003	DIPSTICK ASSEMBLY	1								
28	JAC010JC002	RELEASE VALVE SPINDLE	1								
29	SEC013RA001	O-RING - I.D. 9.25mm, C.S. 1.78mm, NITRILE 90	1	✘	✓						
30	FAS016MD020	RELEASE VALVE SCREW	1								
31	SPC012CA001	SPRING	1								
32	SPC009PA001	CONICAL SPRING	2								
33	FFC012MA001	SUCTION FILTER	1								

NOTE

- ALL PARTS AVAILABLE TO ORDERED AS AN INDIVIDUAL SPARE PARTS (UNLESS MARKED WITH ✘)

- PARTS MARKED WITH ✓ ARE ONLY AVAILABLE IN **JAH20TP3-K SERVICE KIT**. (REFER TO JAH20TP3-K : SERVICE KIT EVD FOR FULL PARTS LIST).

- ITEM NO. 19 - **BSC028LC002**, REQUIRES TOOL **ATC035BJ001** (TO BE ORDERED SEPARATELY).

- ITEM NO. 20 - **BSC017LC001**, REQUIRES TOOL **ATC027PT002** (TO BE ORDERED SEPARATELY).

IMPORTANT

WHEN ORDERING SPARES YOU MUST STATE THE FULL PART NUMBER AND THE PRODUCT SERIAL NUMBER - FROM THE NAMEPLATE TO PROTECT YOUR WARRANTY ALWAYS USE GENUINE HI-FORCE PARTS.

REVISION

1 5498

2 6151

3 6181

4

5

6

7

8

9

10

11

12

13

14

15

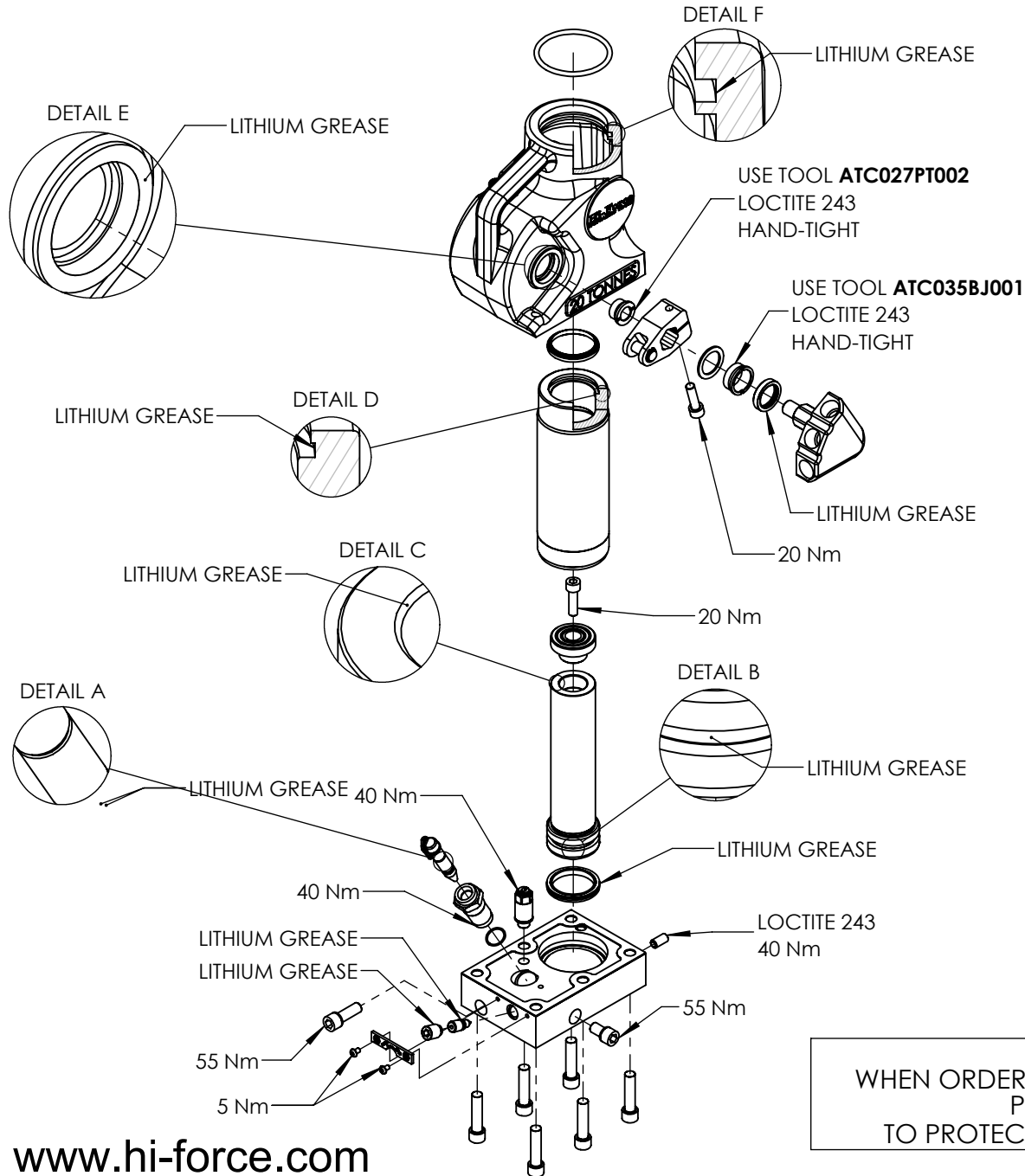
16

17

18

19

20



BASE BOLT TIGHTENING SEQUENCE

ALL BASE BOLTS TIGHTENED EVENLY BY HAND USING AN ALLEN KEY, FOLLOWED BY TIGHTENING SEQUENCE AS BELOW (E.G. BOLTS TORQUED IN ORDER: 1.1, 2.1, 3.1,..... TO 20Nm. FOLLOWED BY SECONDARY TIGHTENING SEQUENCE: 1.2, 2.2, 3.2,..... TO 60 Nm. FINAL TIGHTENING SEQUENCE: 1.3, 2.3, 3.3 TO 100 Nm.

No. 6

- 6.1 - 20 Nm
- 6.2 - 60 Nm
- 6.3 - 100 Nm

No. 5

- 5.1 - 20 Nm
- 5.2 - 60 Nm
- 5.3 - 100 Nm

No. 1

- 1.1 - 20 Nm
- 1.2 - 60 Nm
- 1.3 - 100 Nm

No. 2

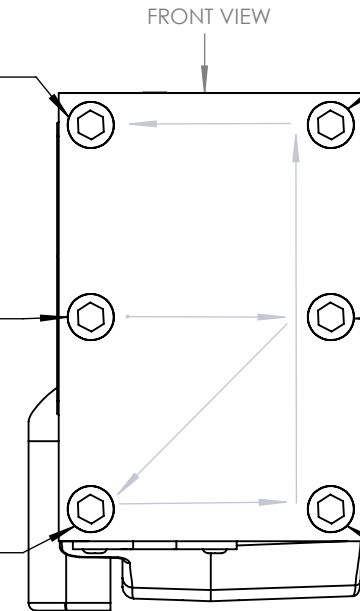
- 2.1 - 20 Nm
- 2.2 - 60 Nm
- 2.3 - 100 Nm

No 3

- 3.1 - 20 Nm
- 3.2 - 60 Nm
- 3.3 - 100 Nm

No. 4

- 4.1 - 20 Nm
- 4.2 - 60 Nm
- 4.3 - 100 Nm

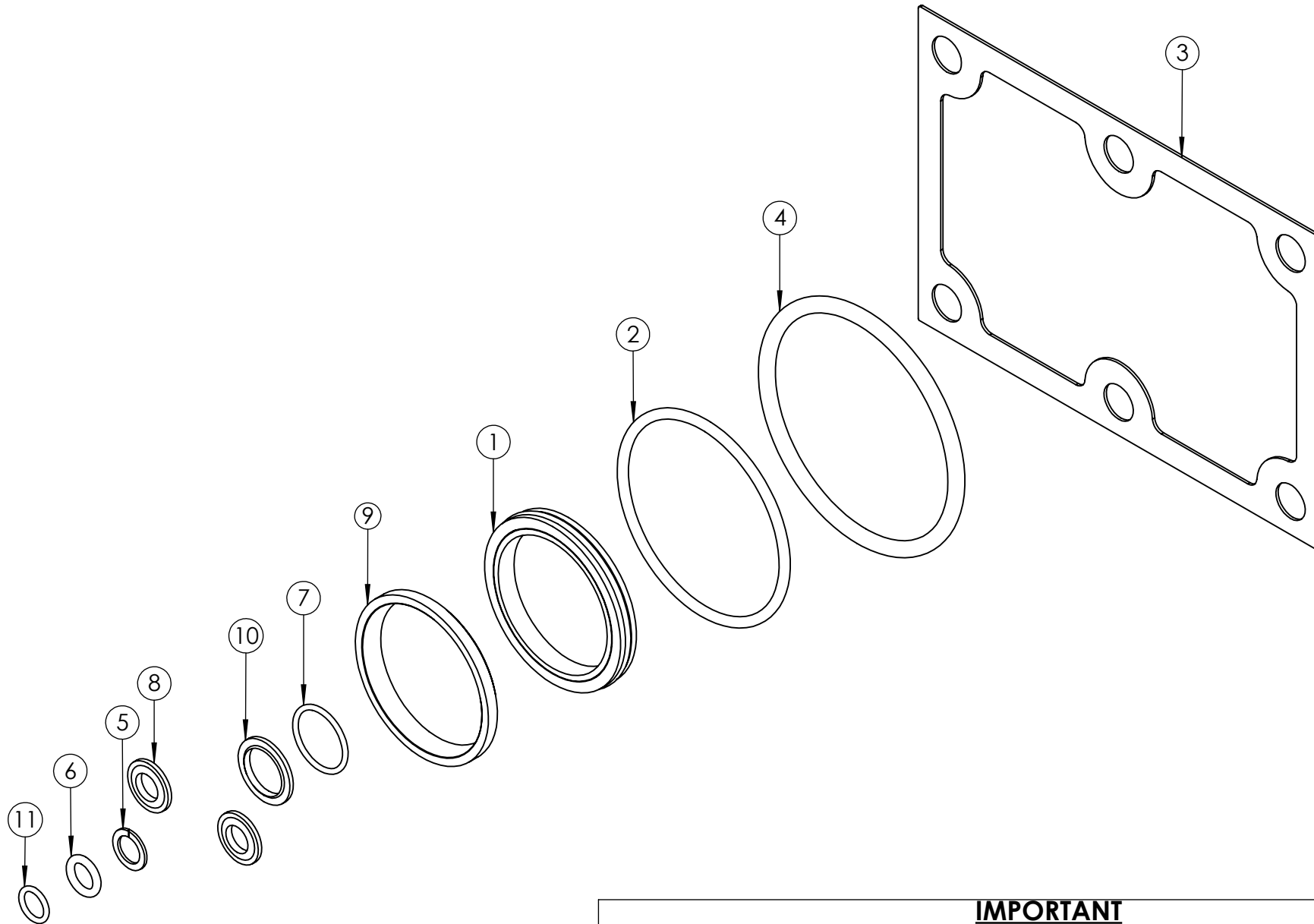


NOTE: ONCE ALL BOLTS HAVE BEEN FULLY TORQUED. ALL BOLTS TO BE RETORQUED AT 100% TORQUE VALUE, CLOCKWISE STARTING AT BOLT NO. 6

IMPORTANT

WHEN ORDERING SPARES YOU MUST STATE THE FULL PART NUMBER AND THE PRODUCT SERIAL NUMBER - FROM THE NAMEPLATE TO PROTECT YOUR WARRANTY ALWAYS USE GENUINE HI-FORCE PARTS.

1	5498
2	6151
3	6181
4	
5	
6	
7	
8	
9	
10	
11	
12	
13	
14	
15	
16	
17	
18	
19	
20	



REVISION

1	6159
2	
3	
4	
5	
6	
7	
8	
9	
10	
11	
12	
13	
14	
15	
16	
17	
18	
19	
20	

IMPORTANT

WHEN ORDERING SPARES YOU MUST STATE THE FULL PART NUMBER AND THE PRODUCT SERIAL NUMBER - FROM THE LABEL TO PROTECT YOUR WARRANTY ALWAYS USE GENUINE HI-FORCE PARTS.

ITEM NO.	PART NUMBER	DESCRIPTION	QTY.
1	SEC060GA001	PISTON SEAL	1
2	SEC075RA003	ORING	1
3	JHC060YB001	20T BASE GASKET	1
4	SEC089RA002	O-RING - I.D. 78.74 mm, C.S. 5.34 mm, NITRILE 70	1
5	SEC014BA001	BACK UP RING	1
6	SEC014RA001	O-RING - I.D. 9.19mm, C.S. 2.62mm, NITRILE 90	1
7	SEC024RF001	O-RING - I.D. 20.35mm, C.S. 1.78mm, NITRILE 70	1
8	WAC012KD000	DOWTY WASHER	2
9	SEC051XE003	WIPER	1
10	WAC016KD001	DOWTY WASHER	1
11	SEC013RA001	O-RING - I.D. 9.25mm, C.S. 1.78mm, NITRILE 90	1

REVISION

1 6159

2

3

4

5

6

7

8

9

10

11

12

13

14

15

16

17

18

19

20

IMPORTANT

WHEN ORDERING SPARES YOU MUST STATE THE FULL PART NUMBER AND THE PRODUCT SERIAL NUMBER - FROM THE LABEL TO PROTECT YOUR WARRANTY ALWAYS USE GENUINE HI-FORCE PARTS.