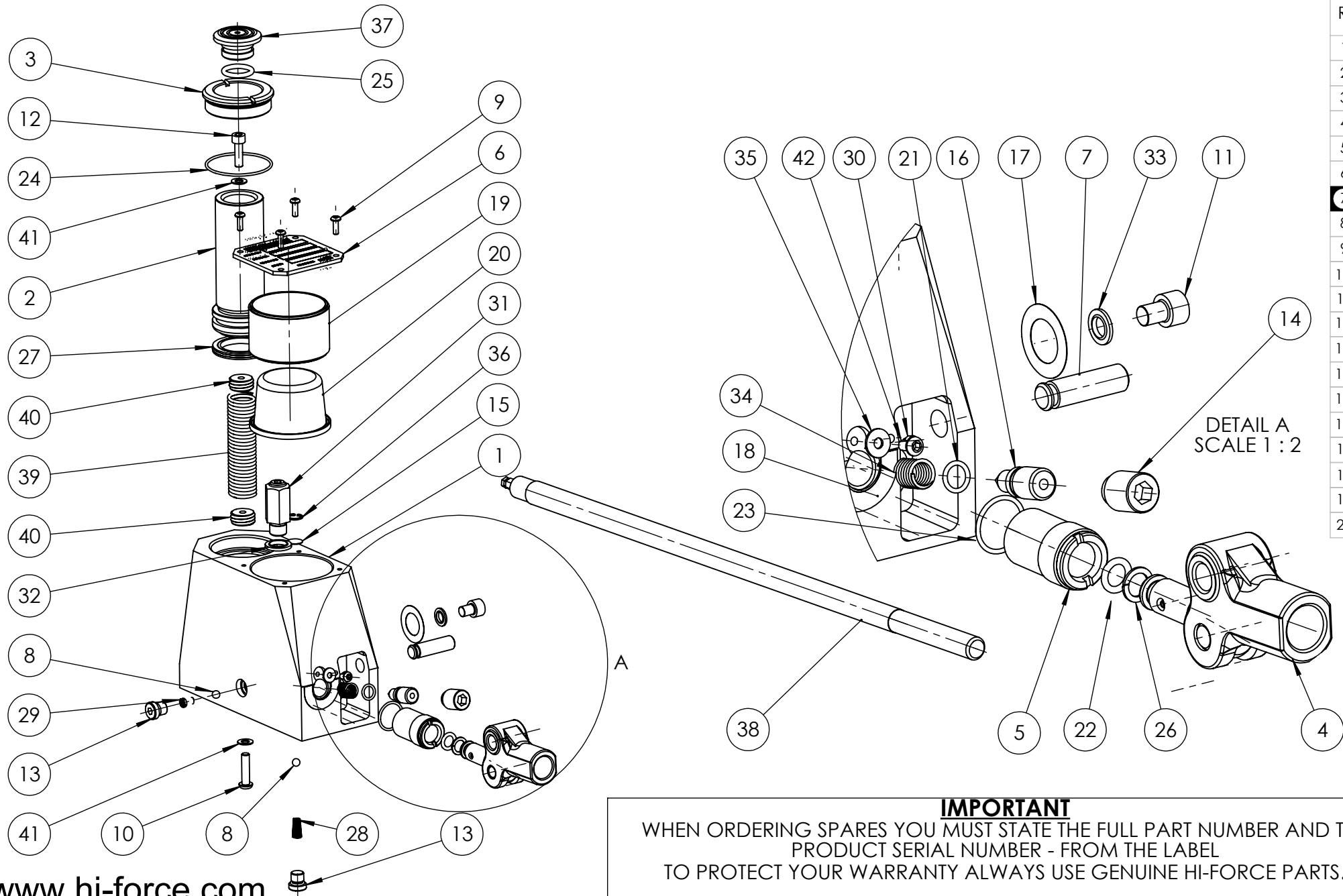


REVISION

1	
2	
3	
4	3887
5	6246
6	6358
7	6411
8	
9	
10	
11	
12	
13	
14	
15	
16	
17	
18	
19	
20	



IMPORTANT
WHEN ORDERING SPARES YOU MUST STATE THE FULL PART NUMBER AND THE
PRODUCT SERIAL NUMBER - FROM THE LABEL
TO PROTECT YOUR WARRANTY ALWAYS USE GENUINE HI-FORCE PARTS.

ITEM NO.	PART NUMBER	DESCRIPTION	QTY.	SPARE PARTS	SERVICE PARTS	ITEM NO.	PART NUMBER	DESCRIPTION	QTY.	SPARE PARTS	SERVICE PARTS	REVISION
1	JBC010BD002	JACK BODY FOR JAS103	1	X		22	SEC014RA001	O-RING - I.D. 9.19mm, C.S. 2.62mm, NITRILE 90	1	X	✓	1
2	JPC010SD001	PISTON	1			23	SEC024RF001	O-RING	1	X	✓	2
3	SRC038PE001	STOP RING	1			24	SEC050RE001	O-RING	1	X	✓	3
4	JAA010AC002	ROCKER ASSEMBLY	1			25	SEC025RA001	O-RING - I.D. 18.64mm, C.S. 3.53mm	1	X	✓	4 3887
5	JAC010DC001	PUMP BARREL	1			26	SEC014BA001	BACK UP RING	1	X	✓	5 6246
6	JAC010HC005	TOP PLATE	1			27	SEC044GA001	PISTON SEAL	1	X	✓	6 6358
7	JAC010GC001	PIVOT PIN	1			28	SPC008CB001	COMPRESSION SPRING.	1			7 6411
8	BAC006SN000	Ø6 mm STEEL BALL	2			29	SPC007CB001	DELIVERY SPRING	1			8
9	BLC004-H012	M4 x 12mm HEX SOCKET BUTTON HEAD SCREW	4			30	FAS004MD006	M4 X 6 HEX SOCKET DOG POINT SCREW	1			9
10	BLC006JH025	M6 x 25mm HEX SOCKET BUTTON HEAD SCREW	1			31	VRA700AF001	RELIEF VALVE	1			10
11	BLC008KD010	M8 x 10mm HEX SOCKET CAP HEAD SCREW	1			32	WAC007HD000	1/4" BSP SELF CENTERING BONDED WASHER	1	X	✓	11
12	BLC006JD020	M6 x 20 mm HEX SOCKET CAP HEAD SCREW	1			33	WAC008KD000	DOWTY WASHER	1	X	✓	12
13	FAS010MX001	M10 SEALING PLUG	2			34	SPC012CA001	SPRING	1			13
14	FAS016MD020	RELEASE VALVE SCREW	1			35	WAC004YK001	M4 x 11.5mm Flat Washer	1			14
15	FFC012MA001	SUCTION FILTER	1	X	✓	36	STC013BA000	RETAINING CLIP	1			15
16	JAC010JC002	RELEASE VALVE SPINDLE	1			37	SAC025PP001	SADDLE	1			16
17	JAC010KC001	OIL FILL LABEL	1			38	HLA019BK001	OPERATING LEVER ASSY.	1			17
18	JAC010KC002	LOWER & RAISE CYLINDER LABEL	1			39	SPC022TD001	SPRING	1			18
19	JAC010PA002	CLAMPING RING	1			40	SIC017TB002	SPRING INSERT	2			19
20	JAC010QA002	RESERVOIR DIAPHRAGM	1	X	✓	41	WAC006EB000	M6 WASHER	2			20
21	SEC013RA001	O-RING - I.D. 9.25mm, C.S. 1.78mm, NITRILE 90	1	X	✓	42	BLC004-H008	M4 X 8mm, HEX SOCKET BUTTON HEAD SCREW	1			

NOTE:

- ALL PARTS ARE AVAILABLE TO BE ORDERED AS SPARE PARTS, UNLESS, MARKED WITH X

- ALL PARTS MARKED WITH ✓ ARE SERVICEABLE PARTS ONLY AVAILABLE IN THE JAS103TP3-K : REPAIR KIT (REFER TO JAS103TP3-K EVD FOR FURTHER DETAILS)

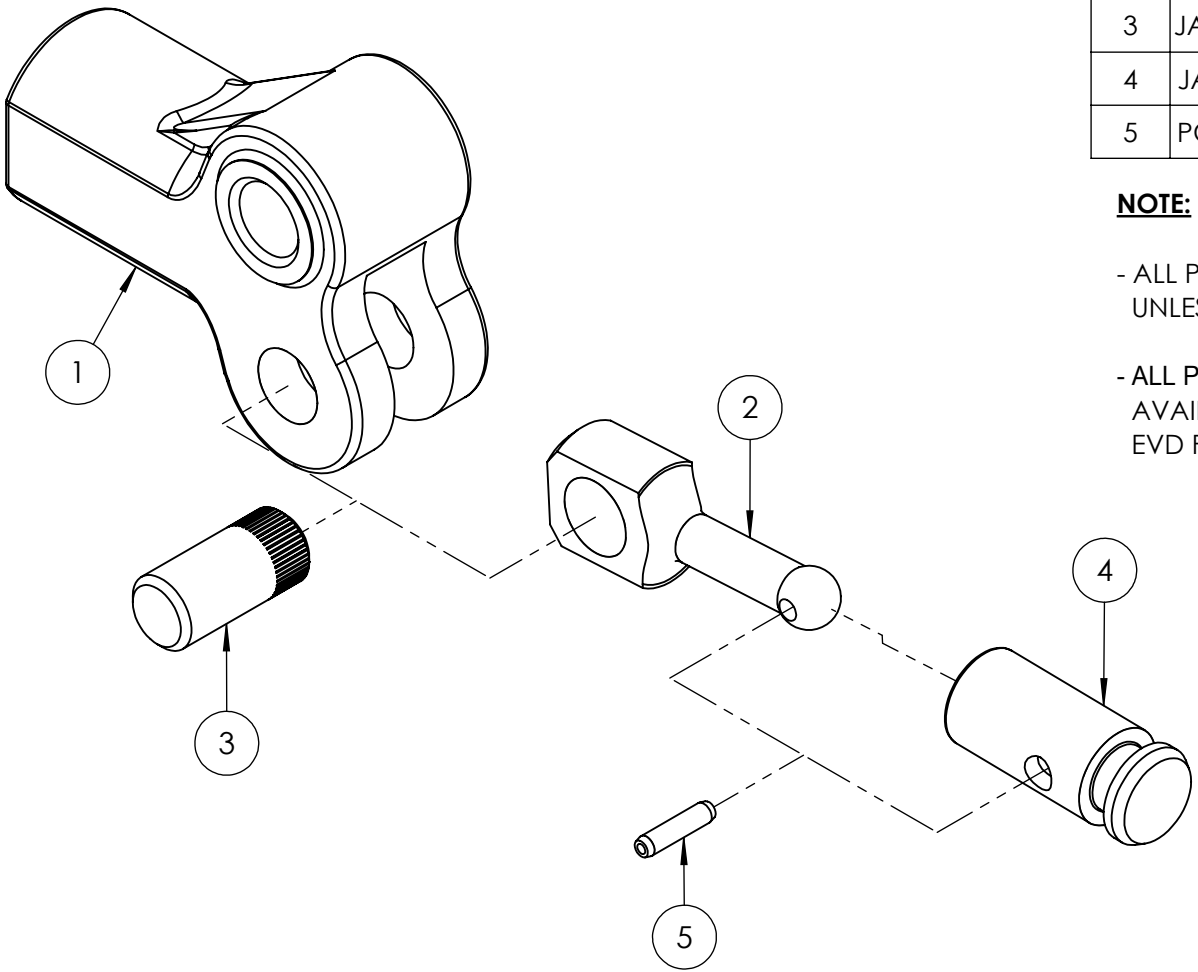
IMPORTANT

WHEN ORDERING SPARES YOU MUST STATE THE FULL PART NUMBER AND THE PRODUCT SERIAL NUMBER - FROM THE LABEL TO PROTECT YOUR WARRANTY ALWAYS USE GENUINE HI-FORCE PARTS.

ITEM NO.	PART NUMBER	DESCRIPTION	QTY.	SPARE PARTS	SERVICE PARTS	REVISION
1	JAC010AC002	PUMP ROCKER	1			1 5706
2	JAC010BC002	CONNECTING ROD	1			2 6246
3	JAC010CC001	CRANK PIN	1			3
4	JAC010EC001	PISTON FOR JAS103/105	1			4
5	PCC003RB006	M3X 12MM SELLOCK PIN	1			5
						6
						7
						8
						9
						10
						11
						12
						13
						14
						15
						16
						17
						18
						19
						20

NOTE:

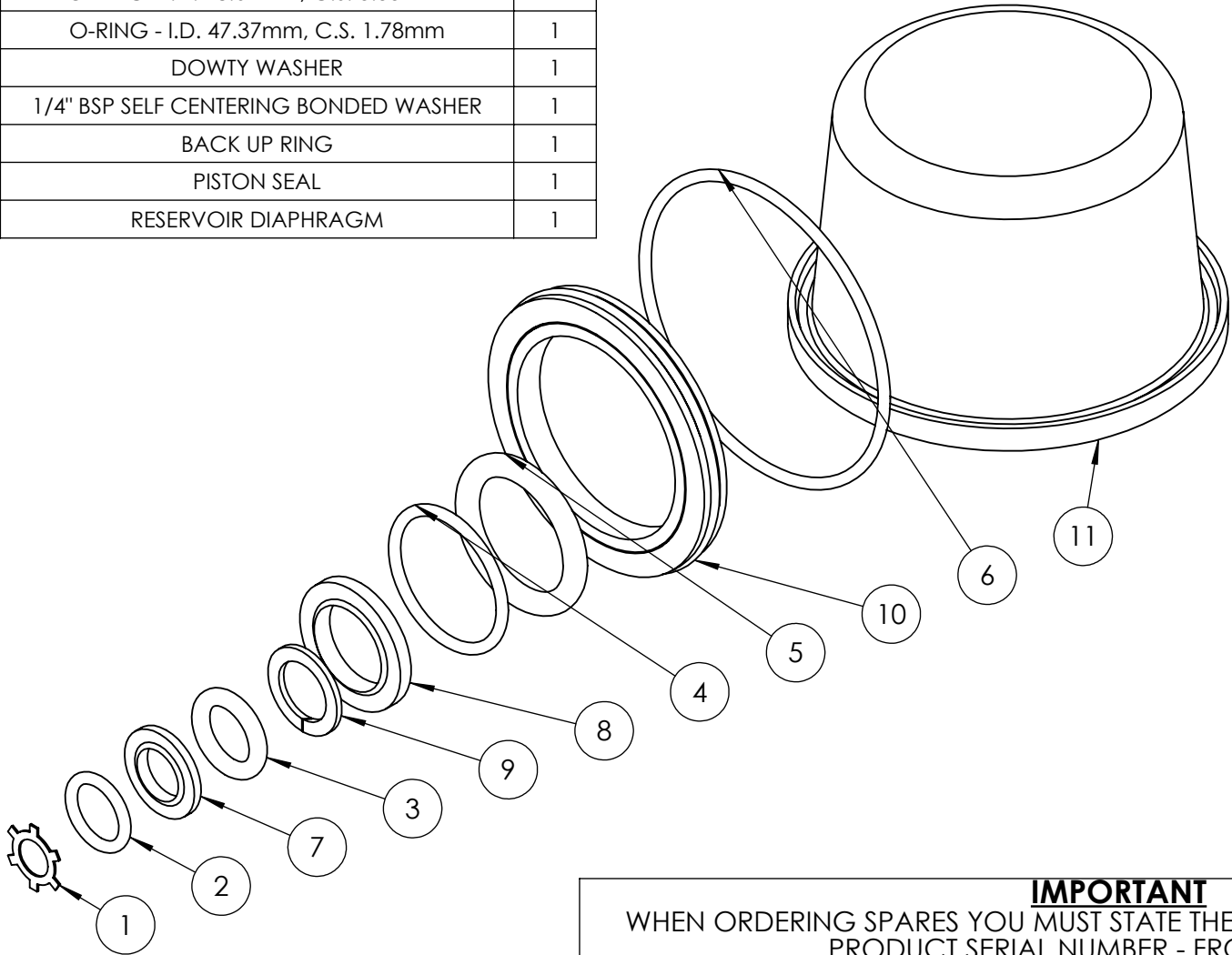
- ALL PARTS ARE AVAILABLE TO BE ORDERED AS SPARE PARTS, UNLESS, MARKED WITH ✕
- ALL PARTS MARKED WITH ✓ ARE ALSO SERVICEABLE PARTS AVAILABLE IN THE **JAS103TP3-K : REPAIR KIT** (REFER TO JAS103TP3-K EVD FOR FURTHER DETAILS)



IMPORTANT

WHEN ORDERING SPARES YOU MUST STATE THE FULL PART NUMBER AND THE PRODUCT SERIAL NUMBER - FROM THE LABEL TO PROTECT YOUR WARRANTY ALWAYS USE GENUINE HI-FORCE PARTS.

ITEM NO.	PART NUMBER	DESCRIPTION	QTY.
1	WAC013DC000	WASHER	1
2	SEC013RA001	O-RING - I.D. 9.25mm, C.S. 1.78mm, NITRILE 90	1
3	SEC014RA001	O-RING - I.D. 9.19mm, C.S. 2.62mm, NITRILE 90	1
4	SEC024RF001	O-RING	1
5	SEC025RA001	O-RING - I.D. 18.64mm, C.S. 3.53mm	1
6	SEC050RE001	O-RING - I.D. 47.37mm, C.S. 1.78mm	1
7	WAC008KD000	DOWTY WASHER	1
8	WAC007HD000	1/4" BSP SELF CENTERING BONDED WASHER	1
9	SEC014BA001	BACK UP RING	1
10	SEC044GA001	PISTON SEAL	1
11	JAC010QA002	RESERVOIR DIAPHRAGM	1



REVISION

1	5706
2	6246
3	
4	
5	
6	
7	
8	
9	
10	
11	
12	
13	
14	
15	
16	
17	
18	
19	
20	

IMPORTANT

WHEN ORDERING SPARES YOU MUST STATE THE FULL PART NUMBER AND THE
PRODUCT SERIAL NUMBER - FROM THE LABEL
TO PROTECT YOUR WARRANTY ALWAYS USE GENUINE HI-FORCE PARTS.

ITEM NO.	PART NUMBER	DESCRIPTION	QTY.
1	ATC023OI001	PUMP BARREL TOOL	1
2	FAS005ME006	CUP PT SCREW	2
3	ATC023OI002	PUMP BARREL GUIDE	1
4	BLC010LD025	SOCKET CAP HD SCREW	1

REVISION

1 6246

2

3

4

5

6

7

8

9

10

11

12

13

14

15

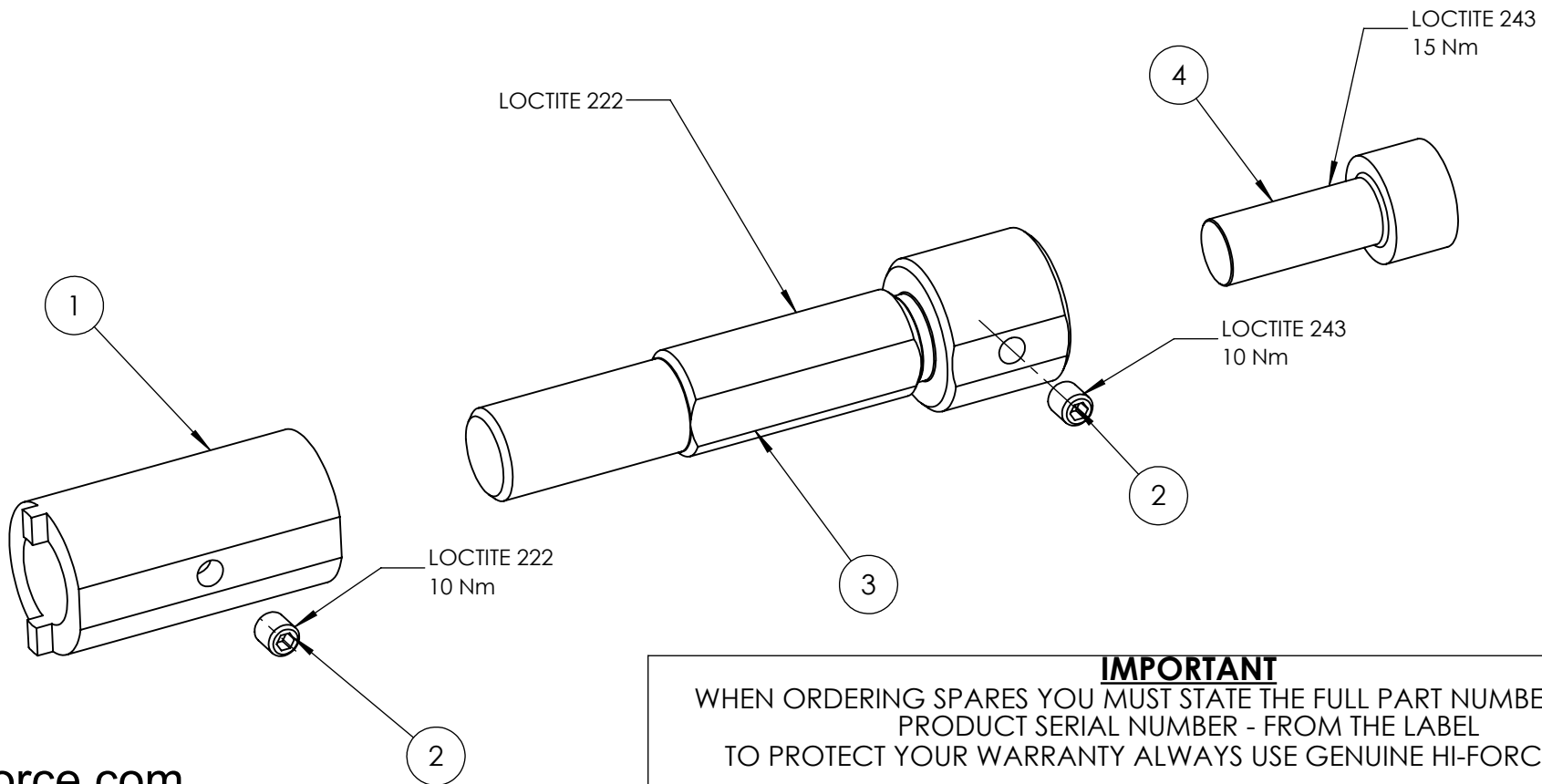
16

17

18

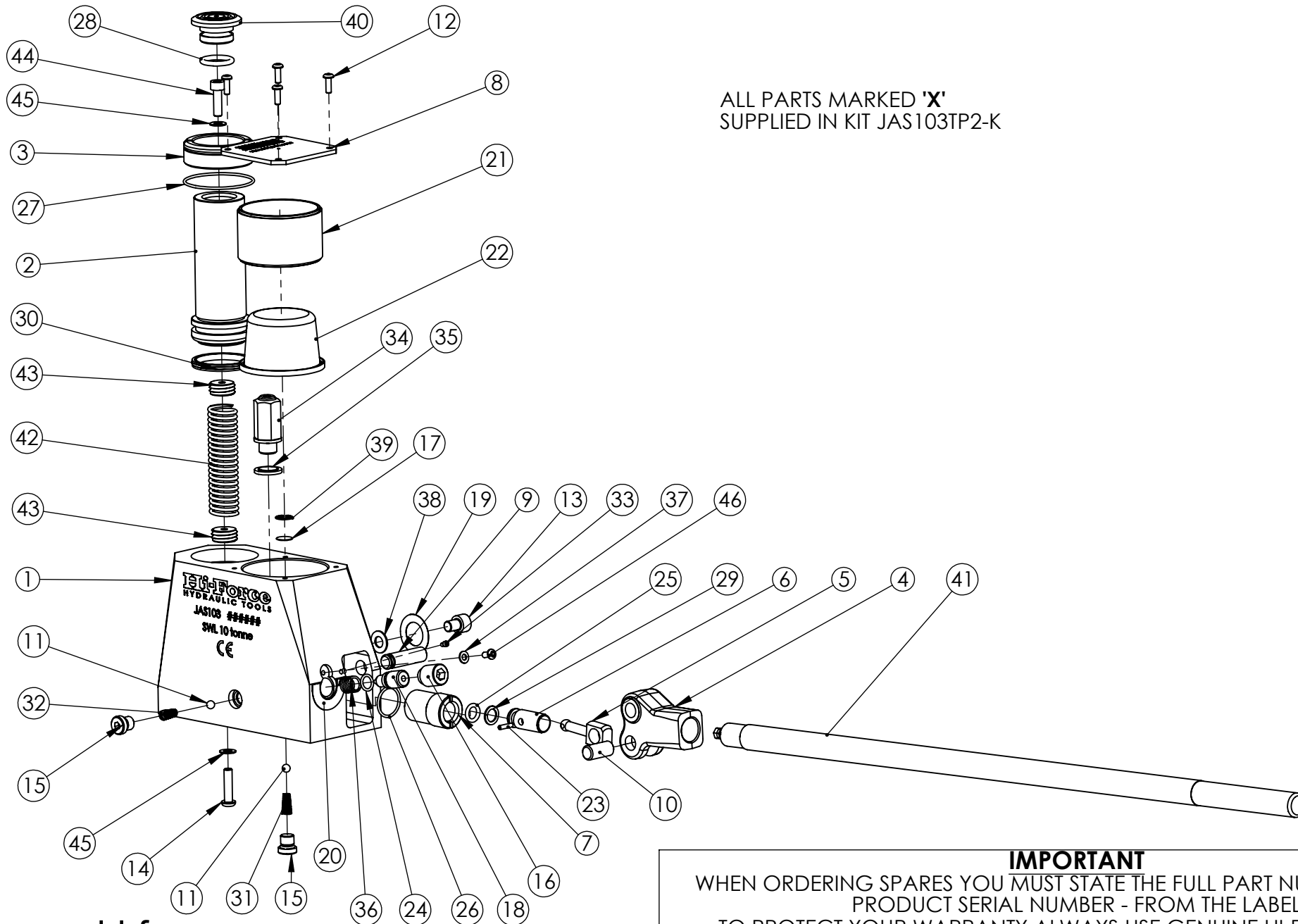
19

20



IMPORTANT

WHEN ORDERING SPARES YOU MUST STATE THE FULL PART NUMBER AND THE PRODUCT SERIAL NUMBER - FROM THE LABEL TO PROTECT YOUR WARRANTY ALWAYS USE GENUINE HI-FORCE PARTS.



REVISION

1	
2	
3	
4	3887
5	
6	
7	
8	
9	
10	
11	
12	
13	
14	
15	
16	
17	
18	
19	
20	

IMPORTANT

WHEN ORDERING SPARES YOU MUST STATE THE FULL PART NUMBER AND THE
PRODUCT SERIAL NUMBER - FROM THE LABEL
TO PROTECT YOUR WARRANTY ALWAYS USE GENUINE HI-FORCE PARTS.

ALL PARTS MARKED 'X'
 SUPPLIED IN KIT JAS103TP2-K

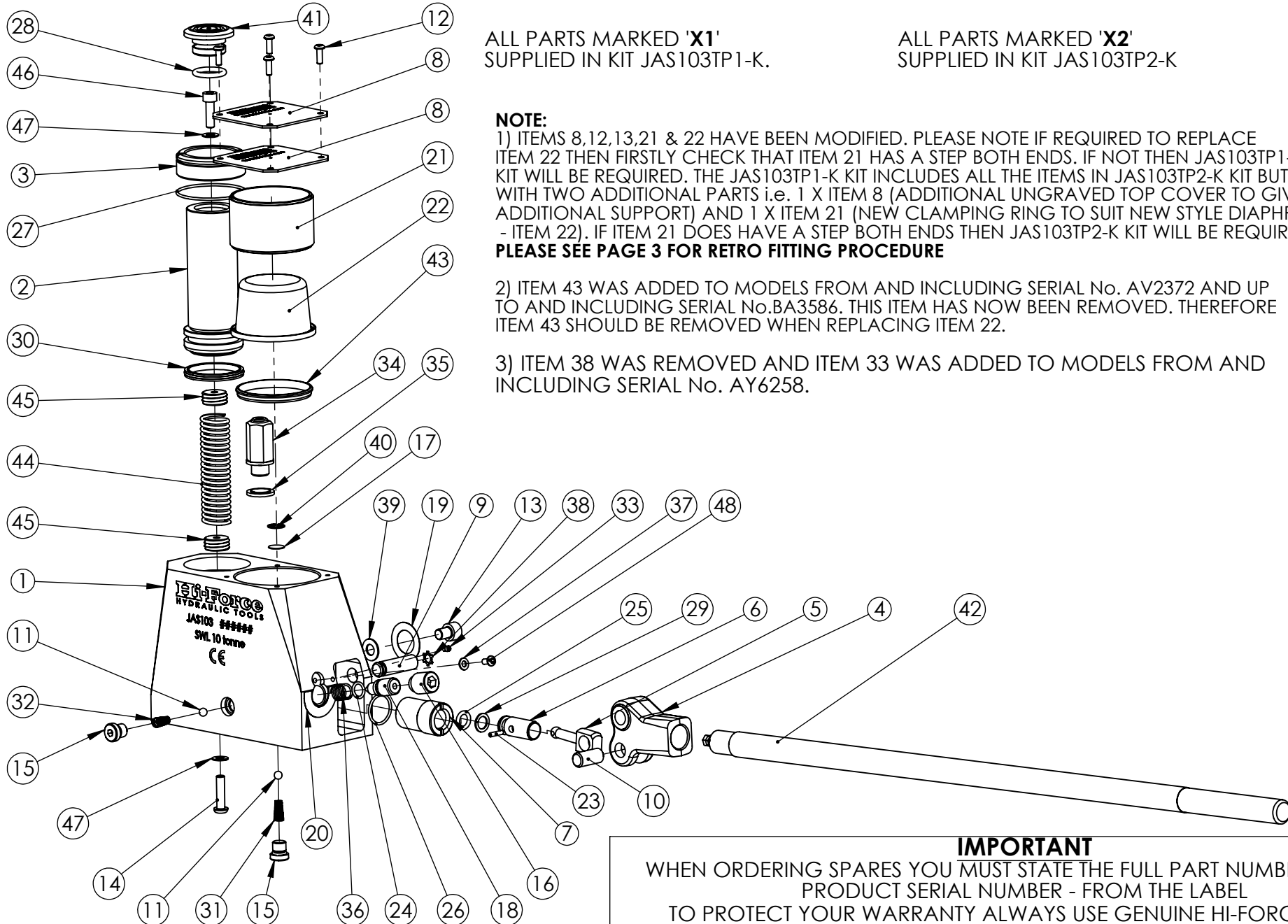
ITEM NO.	PART NUMBER	DESCRIPTION	QTY.
1	JBC010BD001	JACK BODY FOR JAS103	1
2	JPC010SD001	PISTON	1
3	SRC038PE001	STOP RING	1
4	JAC010AC002	PUMP ROCKER	1
5	JAC010BC002	CONNECTING ROD	1
6	JAC010EC001	PISTON FOR JAS103/ 105	1
7	JAC010DC001	PUMP BARREL	1
8	JAC010HC005	TOP COVER	1
9	JAC010GC001	PIVOT PIN	1
10	JAC010CC001	CRANK PIN	1
11	X	6 mm BALL	2
12	X	BUTTON HEAD SCREW	4
13	X	SOCKET CAP HD SCREW	1
14	X	BUTTON HEAD SCREW	1
15	X	M10 SEALING PLUG	2
16	FAS016OC019	RELEASE VALVE SCREW	1
17	X	SUCTION FILTER	1
18	JAC010JC002	RELEASE VALVE SPINDLE	1
19	X	OIL FILL LABEL	1
20	X	LOWER & RAISE CYLINDER	1
21	JAC010PA002	CLAMPING RING	1
22	X	RESERVOIR DIAPHRAGM	1
23	X	M3X 12MM SELLOCK PIN	1
24	X	O - RING	1
25	X	O - RING	1
26	X	O - RING	1
27	X	O - RING	1
28	X	O - RING	1
29	X	BACK UP RING	1
30	X	PISTON SEAL	1
31	X	COMPRESSION SPRING.	1
32	X	SPRING	1
33	X	DOG POINT SCREW	1
34	VRA700AF001	RELIEF VALVE	1
35	X	DOWTY WASHER	1
36	SPC012CA001	COMPRESSION SPRING	1
37	X	TRAP SCREW WASHER	1
38	X	SEALING WASHER	1
39	X	RETAINING CLIP	1
40	SAC025PP001	SADDLE	1
41	HLA019BK001	OPERATING LEVER ASSY.	1
42	SPC022TD001	SPRING	1
43	SIC017TB002	SPRING INSERT	2
44	X	SOCKET CAP HD SCREW	1
45	X	WASHER	2
46	X	BUTTON HEAD SCREW	1

REVISION

1	
2	
3	
4	3887
5	
6	
7	
8	
9	
10	
11	
12	
13	
14	
15	
16	
17	
18	
19	
20	

IMPORTANT

 WHEN ORDERING SPARES YOU MUST STATE THE FULL PART NUMBER AND THE
 PRODUCT SERIAL NUMBER - FROM THE LABEL
 TO PROTECT YOUR WARRANTY ALWAYS USE GENUINE HI-FORCE PARTS.



ALL PARTS MARKED 'X1'
SUPPLIED IN KIT JAS103TP1-K.

ALL PARTS MARKED 'X2'
SUPPLIED IN KIT JAS103TP2-K

NOTE:

1) ITEMS 8,12,13,21 & 22 HAVE BEEN MODIFIED. PLEASE NOTE IF REQUIRED TO REPLACE ITEM 22 THEN FIRSTLY CHECK THAT ITEM 21 HAS A STEP BOTH ENDS. IF NOT THEN JAS103TP1-K KIT WILL BE REQUIRED. THE JAS103TP1-K KIT INCLUDES ALL THE ITEMS IN JAS103TP2-K KIT BUT WITH TWO ADDITIONAL PARTS i.e. 1 X ITEM 8 (ADDITIONAL UNGRAVED TOP COVER TO GIVE ADDITIONAL SUPPORT) AND 1 X ITEM 21 (NEW CLAMPING RING TO SUIT NEW STYLE DIAPHRAGM - ITEM 22). IF ITEM 21 DOES HAVE A STEP BOTH ENDS THEN JAS103TP2-K KIT WILL BE REQUIRED.

PLEASE SEE PAGE 3 FOR RETRO FITTING PROCEDURE

2) ITEM 43 WAS ADDED TO MODELS FROM AND INCLUDING SERIAL No. AV2372 AND UP TO AND INCLUDING SERIAL No. BA3586. THIS ITEM HAS NOW BEEN REMOVED. THEREFORE ITEM 43 SHOULD BE REMOVED WHEN REPLACING ITEM 22.

3) ITEM 38 WAS REMOVED AND ITEM 33 WAS ADDED TO MODELS FROM AND INCLUDING SERIAL No. AY6258.

REVISION

1	
2	
3	3887
4	
5	
6	
7	
8	
9	
10	
11	
12	
13	
14	
15	
16	
17	
18	
19	
20	

IMPORTANT

WHEN ORDERING SPARES YOU MUST STATE THE FULL PART NUMBER AND THE PRODUCT SERIAL NUMBER - FROM THE LABEL TO PROTECT YOUR WARRANTY ALWAYS USE GENUINE HI-FORCE PARTS.

ALL PARTS MARKED 'X1'
 SUPPLIED IN KIT JAS103TP1-K.

ALL PARTS MARKED 'X2'
 SUPPLIED IN KIT JAS103TP2-K.

ITEM NO.	PART NUMBER	DESCRIPTION	QTY.
1	JBC010BD001	JACK BODY FOR JAS103	1
2	JPC010SD001	PISTON	1
3	SRC038PE001	STOP RING	1
4	JAC010AC002	PUMP ROCKER	1
5	JAC010BC002	CONNECTING ROD	1
6	JAC010EC001	PISTON FOR JAS103/ 105	1
7	JAC010DC001	PUMP BARREL	1
8	JAC010HC003 (X1)	TOP COVER	2
9	JAC010GC001	PIVOT PIN	1
10	JAC010CC001	CRANK PIN	1
11	X1 & X2	6 mm BALL	2
12	X1 & X2	BUTTON HEAD SCREW	4
13	X1 & X2	SOCKET CAP HD SCREW	1
14	X1 & X2	BUTTON HEAD SCREW	1
15	X1 & X2	M10 SEALING PLUG	2
16	FAS016OC019	RELEASE VALVE SCREW	1
17	X1 & X2	SUCTION FILTER	1
18	JAC010JC002	RELEASE VALVE SPINDLE	1
19	X1 & X2	OIL FILL LABEL	1
20	X1 & X2	LOWER & RAISE CYLINDER	1
21	JAC010PA002 (X1)	CLAMPING RING	1
22	X1 & X2	RESERVOIR DIAPHRAGM	1
23	X1 & X2	M3X 12MM SELLOCK PIN	1
24	X1 & X2	O - RING	1
25	X1 & X2	O - RING	1
26	X1 & X2	O - RING	1
27	X1 & X2	O - RING	1
28	X1 & X2	O - RING	1
29	X1 & X2	BACK UP RING	1
30	X1 & X2	PISTON SEAL	1
31	X1 & X2	COMPRESSION SPRING.	1
32	X1 & X2	SPRING	1
33	X1 & X2	DOG POINT SCREW	1
34	VRA700AF001	RELIEF VALVE	1
35	X1 & X2	DOWTY WASHER	1
36	SPC012CA001	COMPRESSION SPRING	1
37	X1 & X2	TRAP SCREW WASHER	1
38	X1 & X2	WASHER	1
39	X1 & X2	SEALING WASHER	1
40	X1 & X2	RETAINING CLIP	1
41	SAC025PP001	SADDLE	1
42	HLA019BK001	OPERATING LEVER ASSY.	1
43	OBSOLETE PART - OBSOLETE PART - OBSOLETE PART - OBSOLETE PART		
44	SPC022TD001	SPRING	1
45	SIC017TB002	SPRING INSERT	2
46	X1 & X2	SOCKET CAP HD SCREW	1
47	X1 & X2	WASHER	2
48	X1 & X2	BUTTON HEAD SCREW	1

REVISION

1	
2	
3	3887
4	
5	
6	
7	
8	
9	
10	
11	
12	
13	
14	
15	
16	
17	
18	
19	
20	

IMPORTANT

WHEN ORDERING SPARES YOU MUST STATE THE FULL PART NUMBER AND THE
 PRODUCT SERIAL NUMBER - FROM THE LABEL
 TO PROTECT YOUR WARRANTY ALWAYS USE GENUINE HI-FORCE PARTS.

LONGER RETAINING SCREWS

CURRENT TOP COVER
i.e. WITH SERIAL No. etc

ADDITIONAL STANDARD
TOP COVER

NEW CLAMPING RING

NEW DIAPHRAGM

SEALING WASHER

PROCEDURE FOR RETRO FITTING THE MODIFICATIONS TO THE JAS103 JACKS

- Remove the four retaining screws, top cover, clamping ring, diaphragm and retaining ring and then drain oil from reservoir.
- Remove drain plug and sealing washer.
- Dispose of all parts apart from the top cover as this will be re-used.
- Clean reservoir thoroughly to remove any oil prior to fitting new parts.
- From the JAS103TP1-K kit fit the new diaphragm and new clamping ring to reservoir, ensure the clamping ring is protruding the jack body by the same amount (approximately 0.75mm all round).
- Assemble and secure additional top cover and current top cover with the longer retaining screws. Ensure the additional top cover is underneath current top plate as shown on drawing.
- Lay the jack on it's side with the filler hole facing upwards and fill reservoir with HVI 46 grade hydraulic oil.
- Fit the aluminium sealing washer and secure in position with the drain plug screw.
- Operate the jack a couple of times and check that full stroke is being achieved (75mm).
- If possible test jack at rated load.

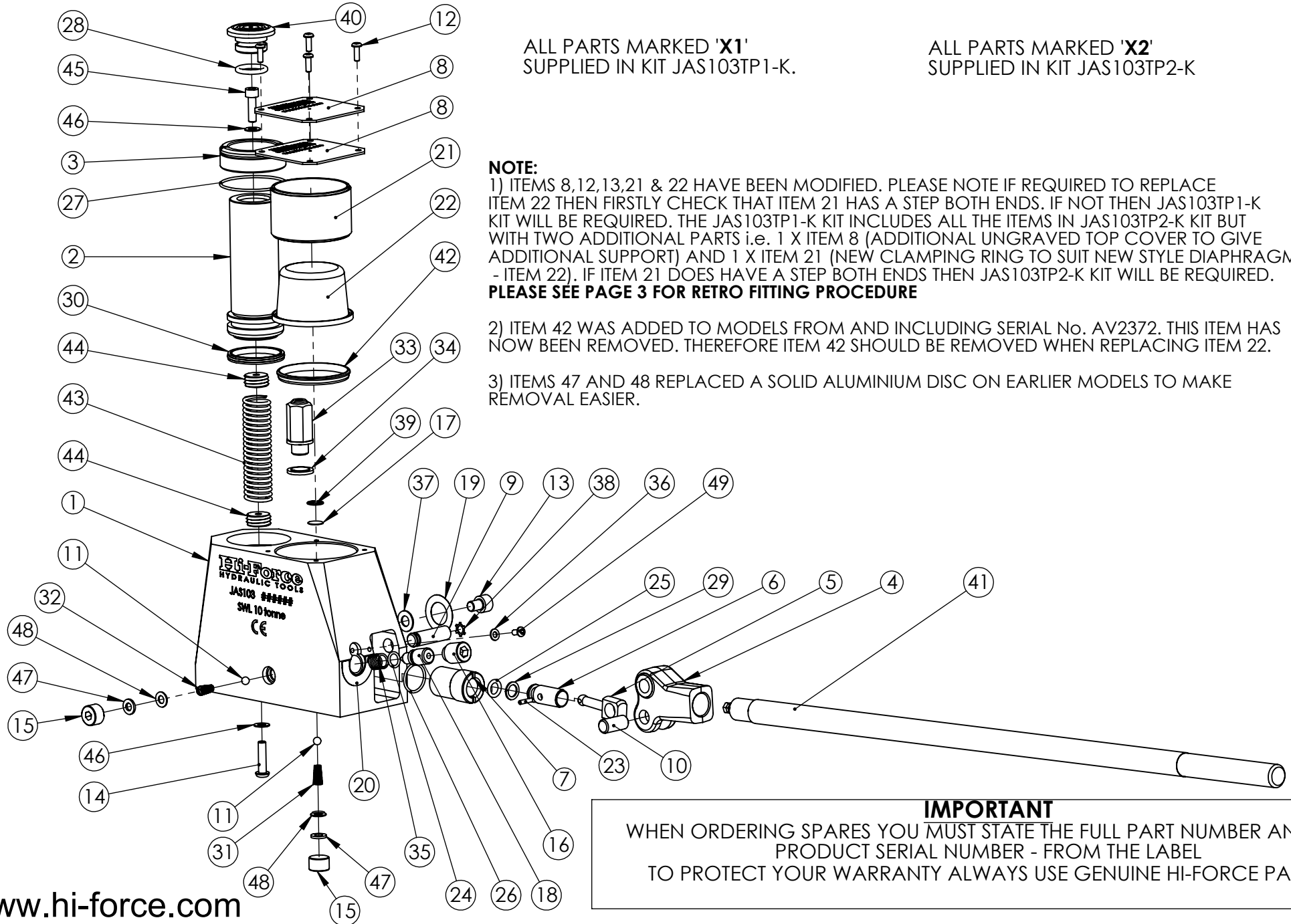
NEW DRAIN PLUG SCREW
(CAP HEAD SCREW)

REVISION

1	
2	
3	3887
4	
5	
6	
7	
8	
9	
10	
11	
12	
13	
14	
15	
16	
17	
18	
19	
20	

IMPORTANT

WHEN ORDERING SPARES YOU MUST STATE THE FULL PART NUMBER AND THE PRODUCT SERIAL NUMBER - FROM THE LABEL
TO PROTECT YOUR WARRANTY ALWAYS USE GENUINE HI-FORCE PARTS.



ALL PARTS MARKED 'X1'
SUPPLIED IN KIT JAS103TP1-K.

ALL PARTS MARKED 'X2'
SUPPLIED IN KIT JAS103TP2-K

NOTE:

1) ITEMS 8,12,13,21 & 22 HAVE BEEN MODIFIED. PLEASE NOTE IF REQUIRED TO REPLACE ITEM 22 THEN FIRSTLY CHECK THAT ITEM 21 HAS A STEP BOTH ENDS. IF NOT THEN JAS103TP1-K KIT WILL BE REQUIRED. THE JAS103TP1-K KIT INCLUDES ALL THE ITEMS IN JAS103TP2-K KIT BUT WITH TWO ADDITIONAL PARTS i.e. 1 X ITEM 8 (ADDITIONAL UNGRAVED TOP COVER TO GIVE ADDITIONAL SUPPORT) AND 1 X ITEM 21 (NEW CLAMPING RING TO SUIT NEW STYLE DIAPHRAGM - ITEM 22). IF ITEM 21 DOES HAVE A STEP BOTH ENDS THEN JAS103TP2-K KIT WILL BE REQUIRED. **PLEASE SEE PAGE 3 FOR RETRO FITTING PROCEDURE**

2) ITEM 42 WAS ADDED TO MODELS FROM AND INCLUDING SERIAL No. AV2372. THIS ITEM HAS NOW BEEN REMOVED. THEREFORE ITEM 42 SHOULD BE REMOVED WHEN REPLACING ITEM 22.

3) ITEMS 47 AND 48 REPLACED A SOLID ALUMINIUM DISC ON EARLIER MODELS TO MAKE REMOVAL EASIER.

REVISION

1	
2	3887
3	
4	
5	
6	
7	
8	
9	
10	
11	
12	
13	
14	
15	
16	
17	
18	
19	
20	

IMPORTANT

WHEN ORDERING SPARES YOU MUST STATE THE FULL PART NUMBER AND THE PRODUCT SERIAL NUMBER - FROM THE LABEL TO PROTECT YOUR WARRANTY ALWAYS USE GENUINE HI-FORCE PARTS.

ALL PARTS MARKED 'X1'
 SUPPLIED IN KIT JAS103TP1-K.

ALL PARTS MARKED 'X2'
 SUPPLIED IN KIT JAS103TP2-K.

ITEM NO.	PART NUMBER	DESCRIPTION	QTY.
1	JBC010BD001	JACK BODY FOR JAS103	1
2	JPC010SD001	PISTON	1
3	SRC038PE001	STOP RING	1
4	JAC010AC002	PUMP ROCKER	1
5	JAC010BC002	CONNECTING ROD	1
6	JAC010EC001	PISTON FOR JAS103/ 105	1
7	JAC010DC001	PUMP BARREL	1
8	JAC010HC003 (X1)	TOP COVER	2
9	JAC010GC001	PIVOT PIN	1
10	JAC010CC001	CRANK PIN	1
11	X1 & X2	6 mm BALL	2
12	X1 & X2	BUTTON HEAD SCREW	4
13	X1 & X2	SOCKET CAP HD SCREW	1
14	X1 & X2	BUTTON HEAD SCREW	1
15	FAS016CA010	BLANKING PLUG	2
16	FAS016OC019	RELEASE VALVE SCREW	1
17	X1 & X2	SUCTION FILTER	1
18	JAC010JC002	RELEASE VALVE SPINDLE	1
19	X1 & X2	OIL FILL LABEL	1
20	X1 & X2	LOWER & RAISE CYLINDER	1
21	JAC010PA002 (X1)	CLAMPING RING	1
22	X1 & X2	RESERVOIR DIAPHRAGM	1
23	X1 & X2	M3X 12MM SELLOCK PIN	1
24	X1 & X2	O - RING	1
25	X1 & X2	O - RING	1
26	X1 & X2	O - RING	1
27	X1 & X2	O - RING	1
28	X1 & X2	O - RING	1
29	X1 & X2	BACK UP RING	1
30	X1 & X2	PISTON SEAL	1
31	X1 & X2	COMPRESSION SPRING.	1
32	X1 & X2	SPRING	1
33	VRA700AF001	RELIEF VALVE	1
34	X1 & X2	DOWTY WASHER	1
35	SPC012CA001	COMPRESSION SPRING	1
36	X1 & X2	TRAP SCREW WASHER	1
37	X1 & X2	SEALING WASHER	1
38	X1 & X2	WASHER	1
39	X1 & X2	RETAINING CLIP	1
40	SAC025PP001	SADDLE	1
41	HLA019BK001	OPERATING LEVER ASSY.	1
42	OBSOLETE PART - OBSOLETE PART - OBSOLETE PART - OBSOLETE PART		
43	SPC022TD001	SPRING	1
44	SIC0171B002	SPRING INSERT	2
45	X1 & X2	SOCKET CAP HD SCREW	1
46	X1 & X2	WASHER	2
47	X1 & X2	WASHER	2
48	X1 & X2	WASHER	2
49	X1 & X2	BUTTON HEAD SCREW	1

REVISION

1	
2	3887
3	
4	
5	
6	
7	
8	
9	
10	
11	
12	
13	
14	
15	
16	
17	
18	
19	
20	

IMPORTANT

WHEN ORDERING SPARES YOU MUST STATE THE FULL PART NUMBER AND THE
 PRODUCT SERIAL NUMBER - FROM THE LABEL
 TO PROTECT YOUR WARRANTY ALWAYS USE GENUINE HI-FORCE PARTS.

LONGER RETAINING SCREWS

CURRENT TOP COVER
i.e. WITH SERIAL No. etc

ADDITIONAL STANDARD
TOP COVER

NEW CLAMPING RING

NEW DIAPHRAGM

SEALING WASHER

PROCEDURE FOR RETRO FITTING THE MODIFICATIONS TO THE JAS103 JACKS

- Remove the four retaining screws, top cover, clamping ring, diaphragm and retaining ring and then drain oil from reservoir.
- Remove drain plug and sealing washer.
- Dispose of all parts apart from the top cover as this will be re-used.
- Clean reservoir thoroughly to remove any oil prior to fitting new parts.
- From the JAS103TP1-K kit fit the new diaphragm and new clamping ring to reservoir, ensure the clamping ring is protruding the jack body by the same amount (approximately 0.75mm all round).
- Assemble and secure additional top cover and current top cover with the longer retaining screws. Ensure the additional top cover is underneath current top plate as shown on drawing.
- Lay the jack on it's side with the filler hole facing upwards and fill reservoir with HVI 46 grade hydraulic oil.
- Fit the aluminium sealing washer and secure in position with the drain plug screw.
- Operate the jack a couple of times and check that full stroke is being achieved (75mm).
- If possible test jack at rated load.

NEW DRAIN PLUG SCREW
(CAP HEAD SCREW)

REVISION

1	
2	3887
3	
4	
5	
6	
7	
8	
9	
10	
11	
12	
13	
14	
15	
16	
17	
18	
19	
20	

IMPORTANT

WHEN ORDERING SPARES YOU MUST STATE THE FULL PART NUMBER AND THE PRODUCT SERIAL NUMBER - FROM THE LABEL
TO PROTECT YOUR WARRANTY ALWAYS USE GENUINE HI-FORCE PARTS.