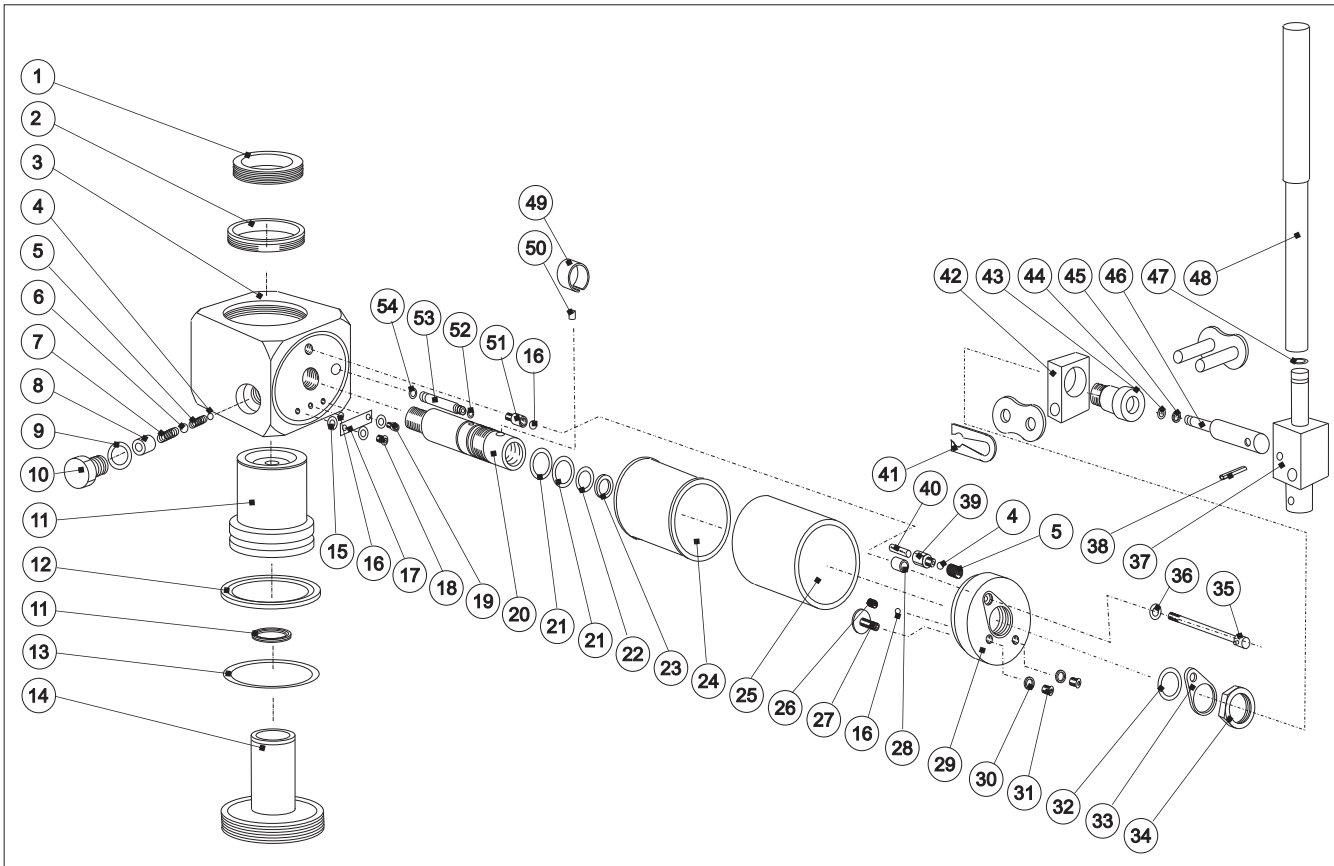


SPARE PARTS- LOW LIFT HYDRAULIC JACK JCH13



DRAWING CHANGE	
1	
2	3936
3	
4	
5	
6	
7	
8	
9	
10	
11	
12	
13	
14	
15	
16	
17	
18	
19	
20	

ITEM	PART NO.	DESCRIPTION	NO.	ITEM	PART NO.	DESCRIPTION	NO.
1	362000900	Saddle	1	28	079006400	Sleeve	1
2	360001400	Bearing	1	29	360000700	End cap	1
3	360002200	Body Assembly	1	30	*	Bonded Washer	2
4	*	Ball	2	31	904003700	Button screw	2
5	*	Compression spring	2	32	*	O ring	1
6	*	Ball	1	33	360000800	Lock washer	1
7	*	Compression Spring	1	34	360001100	Lock nut	1
8	360001800	Spacer	1	35	163000600	Release screw	1
9	*	Bonded Washer	1	36	*	O ring	1
10	351002800	Hex blanking plug	1	37	079001400	Clevis	1
11	360001700	Piston Rod	1	38	907001700	Spring pin	1
12	*	Piston seal	1	39	079010800	Inlet body	1
13	*	O ring	1	40	107013300	Filter mesh	1
14	362000800	Base plug	1	41	907102200	Link	1
15	*	Plain washer	3	42	079002200	Pivot	1
16	*	Ball	3	43	089001200	Bearing	1
17	*	Flexure	1	44	*	O ring	1
18	904003600	Socket button screw	1	45	*	Back up ring	1
19	904007500	Socket cap screw	1	46	079010600	Piston Rod	1
20	360000600	Barrel	1	47	*	O ring	1
21	*	O ring	2	48	079004100	Handle c/w grip	1
22	*	O ring	1	49	905001000	Clip	1
23	*	Solid back up ring	1	50	079006800	Dowel	1
24	*	Bellows	1	51	079002800	Release Body	1
25	079008200	Reservoir	1	52	*	O ring	1
26	*	Compression spring	1	53	079010700	Connector tube	1
27	079011700	Adjusting screw	1	54	*	O ring	1

* ITEMS MARKED SUPPLIED IN SERVICE KIT P/N JCH13TP1-K

Items 20 & 43 are supplied as barrel/bearing assembly 360001200.

To be used and maintained in accordance with written instructions. Consult distributor if in doubt.