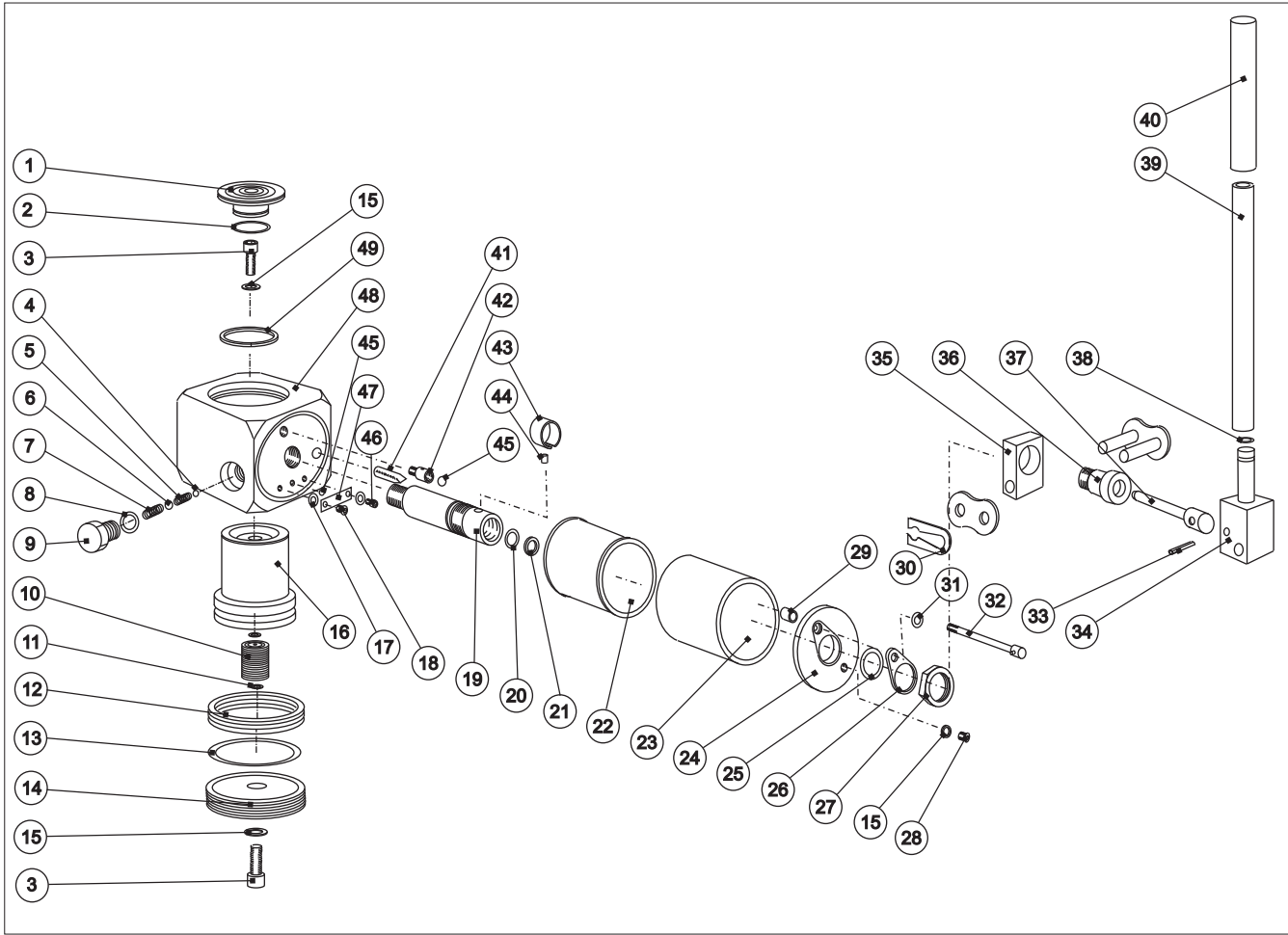


### SPARE PARTS - LOW LIFT HYDRAULIC JACK JCS10



#### DRAWING CHANGE

1	
2	3963
<b>3</b>	<b>5067</b>
4	
5	
6	
7	
8	
9	
10	
11	
12	
13	
14	
15	
16	
17	
18	
19	
20	

ITEM	PART NO.	DESCRIPTION	NO.	ITEM	PART NO.	DESCRIPTION	NO.
1	351001700	Saddle	1	26	351000800	Lock washer	1
2*	901309900	O Ring	1	27	351001100	Lock nut	1
3	904004000	Socket cap screw	2	28*	904003700	Socket button screw	1
4*	902001100	Ball	1	29	079006400	Sleeve	1
5*	045008100	Compression spring	2	30	907100200	Link clip	1
6*	902000900	Ball	1	31*	901307000	O ring 70	1
7*	007007100	Compression Spring	1	32	079003400	Release screw	1
8*	901600200	Bonded Washer	1	33	907001700	Seloc pin	1
9	351002800	Hex plug	1	34	079001400	Clevis	1
10	079006900	Spring	1	35	079002200	Pivot plate	1
11*	904104200	Spring washer	2	36	079002500	Bearing	1
12*	351001500	T seal	1	37	079007000	Pump piston rod	1
13*	901328300	O ring	1	38*	901307100	O ring 90	1
14	351001300	Base plug	1	39	079004000	Handle	1
15*	901601000	Bonded washer	3	40	909000600	Grip	1
16	351001400	Piston rod	1	41	079002000	Filter element	1
17*	904101500	Plain washer	3	42	079002800	Release body	1
18*	904003600	Socket button screw	1	43	905000400	Clip	1
19	351000600	Barrel	1	44	079006800	Dowel	1
20*	901307200	O ring	1	45*	902001300	Ball	2
21*	901401600	Solid back up ring	1	46*	904007500	Socket cap screw	1
22*	079005200	Bellows	1	47	079005300	Flexure	1
23	079001300	Reservoir	1	48	351002500	Body assembly	1
24	351000700	End cap	1	49*	351001800	Bearing strip	1
25*	901322900	O ring	1				

\* ITEMS MARKED SUPPLIED IN SERVICE KIT P/N JCS10TP1-K

Items 40 & 41 supplied as handle assembly, 19 & 36 as barrel/bearing assembly.

To be used and maintained in accordance with written instructions.

Consult distributor if in doubt.