

Heavy Duty Wheels

■ Flange wheels with fixed castors – Drawing No. R8

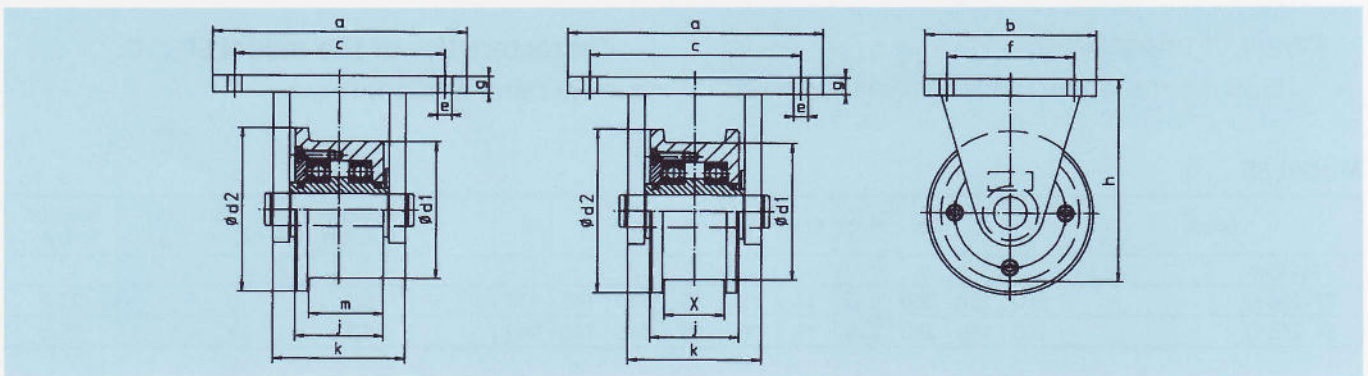
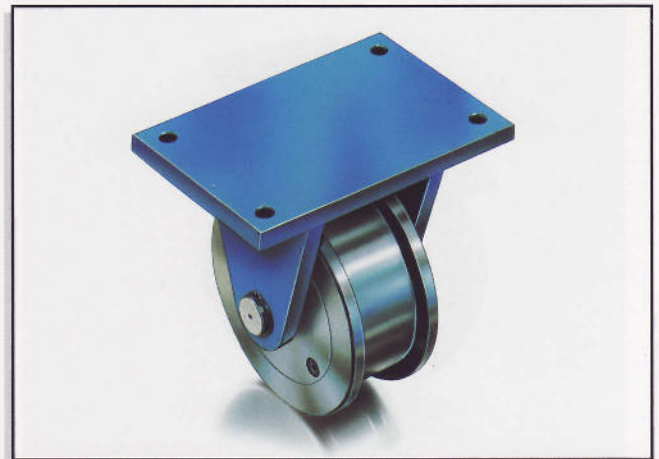
Range of application:

- For transporting loads at a maximum speed of 100 m/min.
- Flange wheels for use on profiles.
- Frequently used on construction sites.
- Frequent use in machine factories.

Characteristics of the model ...SF ...S-A, SF ...S-A/P:

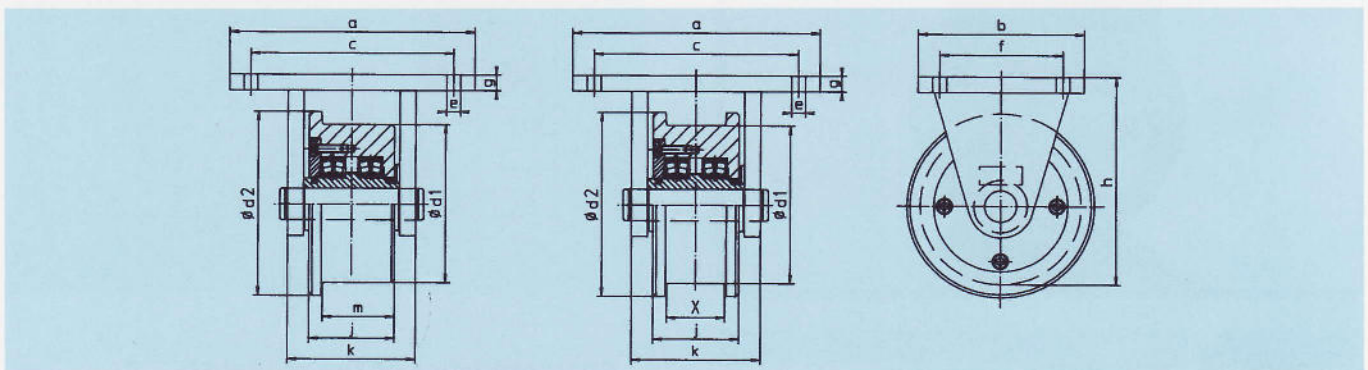
- Solid steel construction for fixed castors.
- Position of fixing holes in top plate can be arranged to suit customers' requirements.

Model SF ...S-A (B), S-A (B)/P



Model SF ...S-A(B)

| Mod. | | a | b | c | Ø d1 | Ø d2 | Ø e | f | g | h | j | k | m | x max | Suitable castors | Carrying capacity (kN) | Weight (kg) | |
|------------|------------|-----|-----|-----|------|------|-----|-----|----|-----|----|-----|------|-------|------------------|------------------------|-------------|------|
| 1 Flange | 2 Flanges | | | | | | | | | | | | | | | A | B | |
| SF 125 S-A | SF 125 S-B | 220 | 150 | 190 | 125 | 150 | 14 | 115 | 15 | 180 | 80 | 120 | 67.5 | 55 | SF | 20 | 14.5 | 14.9 |
| SF 150 S-A | SF 150 S-B | 220 | 150 | 190 | 150 | 175 | 14 | 115 | 15 | 210 | 80 | 120 | 67.5 | 55 | SF | 25 | 17.2 | 17.7 |
| SF 175 S-A | SF 175 S-B | 220 | 150 | 190 | 175 | 200 | 14 | 115 | 15 | 235 | 80 | 120 | 67.5 | 55 | SF | 30 | 21.9 | 22.5 |
| SF 200 S-A | SF 200 S-B | 220 | 150 | 190 | 200 | 225 | 14 | 115 | 15 | 260 | 80 | 120 | 67.5 | 55 | SF | 30 | 27.3 | 28.0 |



Model. SF ...S-A(B)/P

| Mod. | | a | b | c | Ø d1 | Ø d2 | Ø e | f | g | h | j | k | m | x max | Suitable castors | Carrying capacity (kN) | Weight (kg) | |
|--------------|--------------|-----|-----|-----|------|------|-----|-----|----|-----|----|-----|------|-------|------------------|------------------------|-------------|------|
| 1 Flange | 2 Flanges | | | | | | | | | | | | | | | A | B | |
| SF 150 S-A/P | SF 150 S-B/P | 220 | 170 | 180 | 150 | 175 | 18 | 130 | 20 | 195 | 80 | 130 | 67.5 | 55 | SF | 40 | 17.4 | 17.9 |
| SF 175 S-A/P | SF 175 S-B/P | 220 | 170 | 180 | 175 | 200 | 18 | 130 | 20 | 220 | 80 | 130 | 67.5 | 55 | SF | 40 | 22.1 | 22.7 |
| SF 200 S-A/P | SF 200 S-B/P | 220 | 170 | 180 | 200 | 225 | 18 | 130 | 20 | 245 | 80 | 130 | 67.5 | 55 | SF | 50 | 27.5 | 28.2 |
| SF 225 S-A/P | SF 225 S-B/P | 220 | 170 | 180 | 225 | 275 | 18 | 130 | 20 | 285 | 80 | 130 | 67.5 | 55 | SF | 50 | 33.7 | 34.5 |
| SF 250 S-A/P | SF 250 S-B/P | 270 | 210 | 210 | 250 | 300 | 18 | 160 | 20 | 310 | 80 | 130 | 67.5 | 55 | SF | 65 | 42.9 | 43.7 |