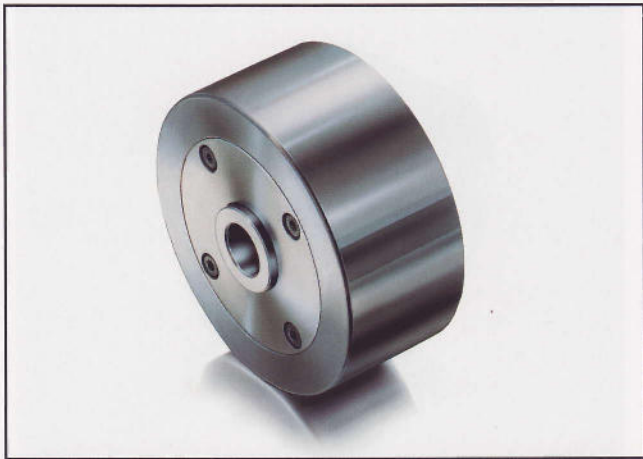


Heavy Duty Wheels

Model S/P



Characteristics of the model ... S/P:

- Solid steel construction with self-aligning roller bearings.
- Body hardened to 35-38 HRC with crowned wheel running surface.
- Delivered with various mountings as fixed castors and swivel castors (SF, SL, SD).

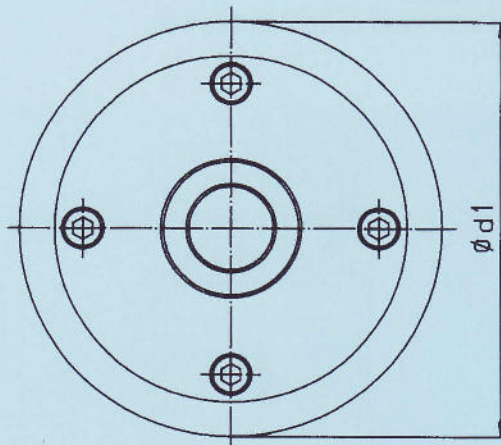
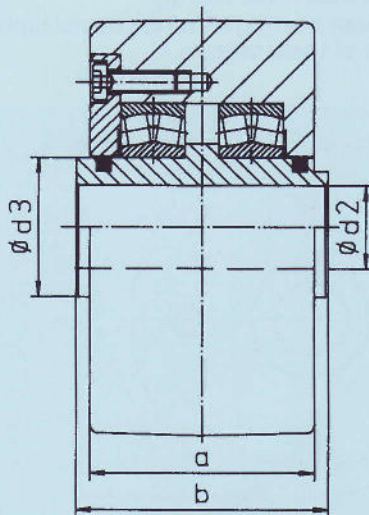
Wheels (without castors) – Drawing No. R3

Range of application:

- For robust use e.g. on construction sites.
- Can be inserted as a machine part.
- For transporting loads at a maximum speed of 100 m/min.
- When higher carrying capacity and greater sturdiness is required.
- When higher safety standards and heavy duty are required.

Hints on use:

- Maintenance-free construction, used particularly in machine factories, on construction sites and for the handling of heavy goods.
- Can be combined with fixed castors and swivel castors.
- Material with a high carrying capacity, which is not very susceptible to rough handling.
- Can also be delivered as a flange wheel construction (see model S-A/P; S-B/P).



Model S/P

Mod.	a	b	$\varnothing d1$	$\varnothing d2$	$\varnothing d3$					Suitable castors	Carrying capacity (kN)	Weight (kg)
Steel												
150 S/P	80	90	150	30	50					SF SL SD	50	9.9
175 S/P	80	90	175	30	50					SF SL SD	50	13.8
200 S/P	80	90	200	30	50					SF SL SD	60	18.3
225 S/P	80	90	225	30	50					SF	60	23.5
250 S/P	80	90	250	30	50					SF	80	29.5
275 S/P	80	90	275	30	50					SF	80	36.5
300 S/P	80	90	300	30	50					SF	80	44.6