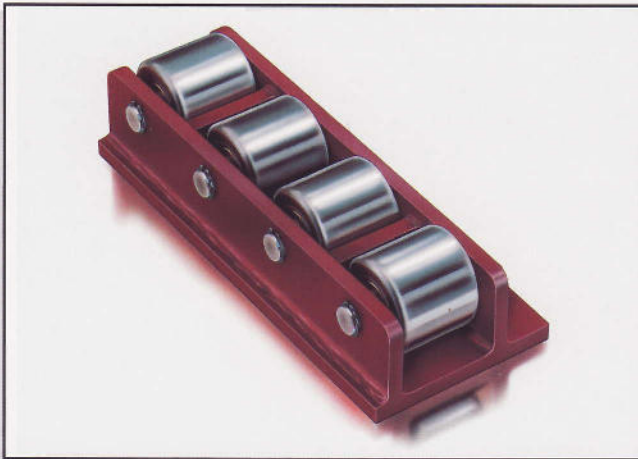
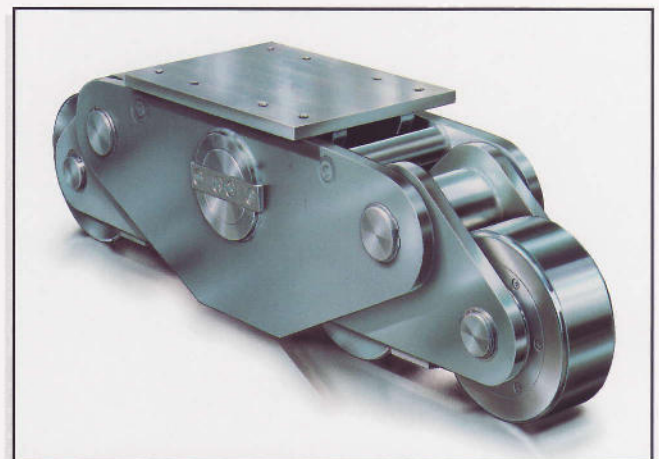
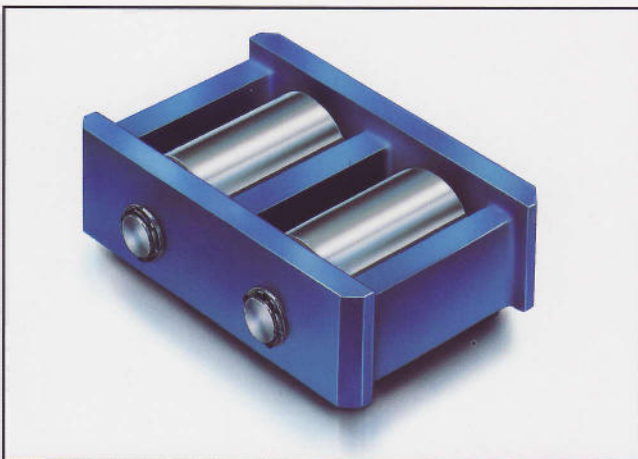
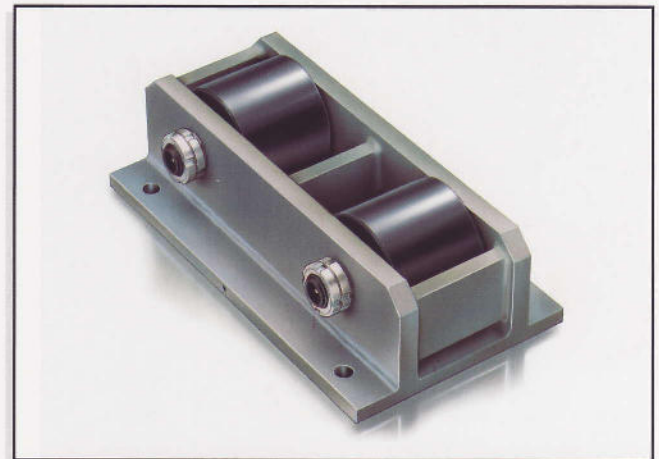


Heavy Duty Wheels

■ Sets of wheels – Drawing No. R11



Model WRS



Range of application:

- Less integral floor pressure than with the Roller Skate Express.
- If the running surface is very uneven.
- Delivered according to individual customer's requirements and according to the assigned requirements of the product.

Characteristics of the model ... WRS:

- Solid steel construction with
 - Grooved bearings (single or double row) (WRS ... -RK), or
 - Self-aligning roller bearing (WRS ... -PR), or
 - Tapered-roller bearing (clearance adjustable) (WRS ... -KP)
- Hardened wheel bodies, various types of steel (C45, CrNi, CrMo) depending on customers requirements

Hints on use:

- Maintenance-free construction, used particularly on wharfs and at airports.
- Problems solved for individual customers.
- Material with a high carrying capacity: individual carrying capacity up to 1.000 kN.
- Small single units are also produced.
- Maximum speed: 100 m/min.

