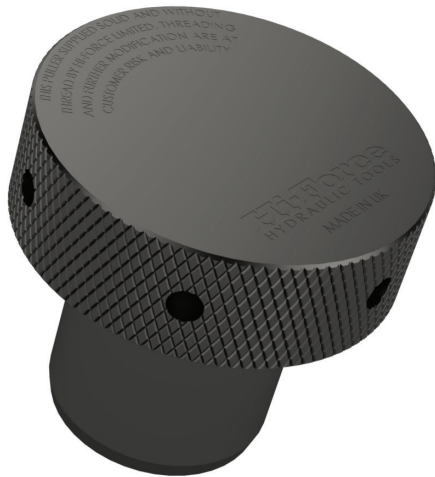


**STS | BOLT TENSIONER COMPONENTS - BLANK PULLERS**



- ▶ High tensile steel 817M40T (24T) construction with anti-corrosive black coating
- ▶ Suitable for customers who prefer to customise their own non-standard threads to suit specific tensioning needs
- ▶ For the minimum stud protrusion guide, see Figure 1 and refer to Section 5.1 in the STS operating manual

Use with STS Imperial and Metric Tensioners

Capacities from 234 to 2649 kN

Standard size non-threaded pullers

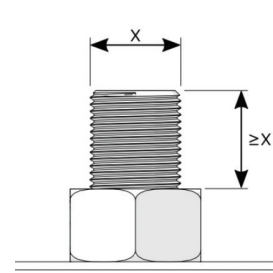
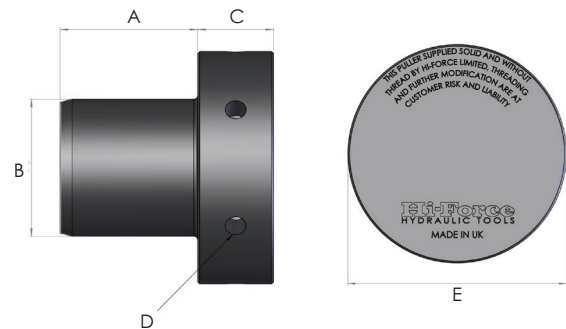


Figure 1: This is for guidance only and it is the customer's responsibility to ensure the studs are capable of taking the load to be applied during tensioning and determining sufficient thread engagement when tensioning.



Model number	Maximum capacity		Dimensions (mm)				
	kN	tonnes	A	B	C	D	E
STS1-PB	234	23.9	62	37	18	6.5	64
STS2-PB	457	46.6	70	52	25	8.5	90
STS3-PB	822	83.8	69	69	38	10.5	117
STS4-PB	1264	128.9	85	87	30	10.5	146
STS5-PB	1833	186.9	79	104	42	14.5	173
STS6-PB	2649	270	107	133	52	14.5	212

Note: 1) Standard Hi-Force STS threaded pullers are designed so that there is sufficient clearance between the top of the nut and the underside of the puller. For this clearance, dimension 'A' is adjusted depending on thread size and the nut height difference. In the case of STS-PB blank puller, the custom thread is unknown to Hi-Force, therefore, adjustment of dimension 'A' to achieve the correct setup is the customer's responsibility.  
2) The thread specifications and machining will be carried out by the customer and Hi-Force is not responsible for further machining of the STS-PB pullers.