

SPECIALTY TOOLS

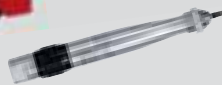
CP OFFERS A WIDE RANGE OF SPECIALTY TOOLS TO ENHANCE THE DEPTH OF ITS PRODUCT PORTFOLIO



▶ RIVETERS



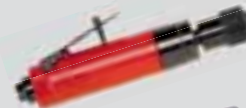
▶ CAULKING GUNS



▶ ENGRAVING PENS



▶ SAWS



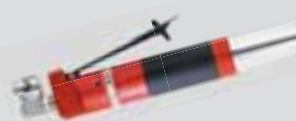
▶ TIRE BUFFERS



▶ HIGH SPEED CUTTERS



▶ NIBBLERS



▶ AIR FILES



▶ SHEARS

SPECIALTY TOOLS

Riveting & Caulking

CP9883 ★★

3/16" rivet max capacity
4.8mm



LIGHTWEIGHT & STRONG

FEATURES

- Compact size
- 3/16" (4.8mm) max. capacity
- Heavy pulling: up to 1,900 lbs (865 kg)

BENEFITS

- Ideal for versatile applications
- Durable, reliable and easy to service
- Maximize operator comfort

CP9884

Similar features as CP9883 for longer rivet capacity: 1/4" (6.4 mm)

CP9885 ★

Standard Cartridge

2" x 8-1/2" (50 x 210 mm)



AIR CAULKING GUN

FEATURES

- Durable lightweight design
- Trigger controlled material flow
- Accepts standard cartridges: 2" x 8-1/2" (50x210 mm)

BENEFITS

- Labor time saving
- Easy to handle
- Operator comfort



CP9882 ★

3/16" rivet max capacity
4.8mm



EASY-TO-USE & RELIABLE

FEATURES

- Compact size
- 3/16" (4.8 mm) max. capacity
- For rivets in Aluminum, copper and softer materials

BENEFITS

- Simple construction for easy maintenance
- Great for trailer panels, number plates, and any type of panels maintenance



CP9884



See accessories on pages 189

★ GENERAL MAINTENANCE ★★ INDUSTRIAL MAINTENANCE & PRODUCTION ★★★ SUPER INDUSTRIAL

| MODEL | PART NUMBER | MAX AXIAL PULLING LOAD | | AIR CONS @LOAD | | LENGTH | | NET WEIGHT | | VIBRATION LEVEL ISO 8662-12 (M/S2) | | SOUND PRESSURE ISO 15744 - dB(A) | SOUND POWER | AIR INLET |
|--------|--------------|------------------------|-------|----------------|-----|--------|-----|------------|-----|------------------------------------|---|----------------------------------|-------------|-----------|
| | | lb@85psi | kg | cfm | l/s | in. | mm | lb | kg | a | k | | | |
| CP9882 | 894 109 8820 | 2,200 | 1,000 | 4.0 | 1.9 | 8.9 | 225 | 3.3 | 1.5 | <2.5 | - | 62 | 73 | 1/4 |
| CP9883 | 894 109 8830 | 1,900 | 865 | 4.5 | 2.1 | 11.8 | 300 | 3.2 | 1.5 | <2.5 | - | 55 | 66 | 1/4 |
| CP9884 | 894 109 8840 | 3,530 | 1,600 | 9.0 | 4.3 | 12.2 | 310 | 4.2 | 1.9 | <2.5 | - | 56 | 67 | 1/4 |
| CP9885 | 615 197 9885 | - | - | 16.8 | 8.0 | 10.1 | 270 | 2.3 | 1.0 | <2.5 | - | 71 | 82 | 1/4 |

All models: Hose int. 3/8" (9.5mm) - @90 PSI (@6.3 Bar)

Listed specifications are for reference only. Please check documents in each tool or on www.cp.com

Engraving

CP9160 ★



ENGRAVING PEN

FEATURES

- Very quiet engraving pen with an integrated 6.5 ft (2 m) hose
- High blows per minute (32,400 BPM)

BENEFITS

- Efficient engraving with low noise
- Precise & reliable
- Comfortable handling



CP9361

CP9361-1 Kit ★★

AIR SCRIBE KIT

FEATURES

- Highest durability in the market
- Hose 8ft (2.4m) length with air filter
- Convertible to a hammer or a light scaler

BENEFITS

- Constructed of premium components
- Easy handling and Comfortable use
- Adjustable power for a variety of applications and materials such as: metals, plastics, ceramics, and glass



CP9361-1 Kit

CP9361

Same features as CP9361-1 Kit with the tool and the hose only



See accessories on pages 189

★ GENERAL MAINTENANCE ★★ INDUSTRIAL MAINTENANCE & PRODUCTION ★★★ SUPER INDUSTRIAL

| MODEL | PART NUMBER | BLOWS PER MIN. | AIR CONS. @ LOAD | | LENGTH | | NET WEIGHT | | VIBRATION LEVEL ISO 28927 (M/S ²) | | SOUND PRESSURE ISO 15744 - dB(A) | SOUND POWER | HOSE INT. | | AIR INLET |
|--------------|--------------|----------------|------------------|-----|--------|-----|------------|-----|---|-----|----------------------------------|-------------|-----------|----|-----------|
| | | | cfm | l/s | in. | mm | lb | kg | a | K | | | in. | mm | |
| CP9160 | 615 197 9160 | 32,400 | 1.7 | 0.8 | 5.8 | 147 | 0.3 | 0.1 | 8.1 | 1.9 | 59 | 70 | 1/4 | 6 | 1/4 |
| CP9361 | T012644 | 13,500 | 0.2 | 0.1 | 5.0 | 127 | 0.3 | 0.1 | 5.1 | 2.4 | 79 | 90 | 3/16 | 5 | 1/4 |
| CP9361-1 Kit | T011970 | 13,500 | 0.2 | 0.1 | 5.0 | 127 | 0.3 | 0.1 | 5.1 | 2.4 | 79 | 90 | 3/16 | 5 | 1/4 |

CP9160: Hose int. 1/4" (6mm) - CP9361: Hose int. 3/16" (5mm) - @90 PSI (@6.3 Bar)

Listed specifications are for reference only. Please check documents in each tool or on www.cp.com

SPECIALTY TOOLS

Cutting

CP7901 ★

3/8" / 10mm stroke



80 dB(A) QUIET

CP7901Kit
See details page 189



LOW VIBRATION

FEATURES

- Air reciprocating saw
- Very low vibration
- 3/8" (10 mm) stroke length

BENEFITS

- Reduced vibration for operator comfort and control
- Maximize operator comfort and productivity
- Premium tool for all cutting applications

CP881 ★★

3/8" / 10mm stroke



INTENSE CUTTING

FEATURES

- Power and speed of 9,500 strokes per minute
- Rugged construction for intense cutting
- Adjustable guard guide

BENEFITS

- Cut through material with ease
- Powerful and durable
- Ideal tool for General Maintenance

CP7900 ★

3/8" / 10mm stroke



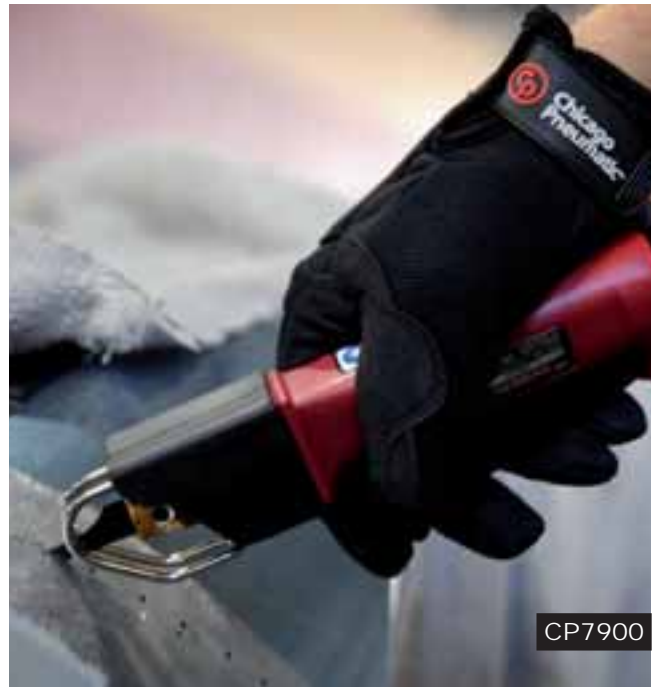
LIGHTWEIGHT

FEATURES

- Ergonomic design and robust housing handle
- Adjustable guard guide
- 3/8" (10 mm) stroke length

BENEFITS

- Compact and lightweight for all general cutting
- Ideal tool for periodic usage



CP7900



See accessories on pages 189

★ GENERAL MAINTENANCE ★★ INDUSTRIAL MAINTENANCE & PRODUCTION ★★★ SUPER INDUSTRIAL

| MODEL | PART NUMBER | STROKES PER MINUTE | STROKES LENGTH | | AIR CONS. @LOAD | | NET WEIGHT | | LENGTH | | VIBRATION LEVEL ISO 28927 (M/S ²) | | SOUND PRESSURE ISO 15744 - dB(A) | SOUND POWER | AIR INLET |
|--------|--------------|--------------------|----------------|----|-----------------|-----|------------|-----|--------|-----|---|-----|----------------------------------|-------------|-----------|
| | | | in. | mm | cfm | l/s | lb | kg | in. | mm | a | K | | | |
| CP881 | T023916 | 9,500 | 3/8 | 10 | 6.0 | 2.8 | 1.6 | 0.7 | 8.6 | 219 | 23.2 | 6.6 | 84 | 95 | 1/4 |
| CP7900 | 894 107 9000 | 10,000 | 3/8 | 10 | 5.5 | 2.6 | 1.3 | 0.6 | 8.5 | 216 | 19.6 | 5.2 | 82 | 93 | 1/4 |
| CP7901 | 894 107 9011 | 10,000 | 3/8 | 10 | 5.5 | 2.6 | 1.9 | 0.9 | 9.0 | 229 | <2.5 | - | 78 | 89 | 1/4 |

All models: Hose int. 3/8" (9.5mm) - @90 PSI (@6.3 Bar)

Listed specifications are for reference only. Please check documents in each tool or on www.cp.com

Cutting

CP874 ★



22,000 RPM



HIGH-SPEED CUTTING

FEATURES

- Wheel diameter 2-7/8" (73 mm)
- Adjustable speed regulator
- Lock-off lever to prevent accidental start-up

BENEFITS

- Precise and safe control
- Ideal for cutting through composite, sheet metal, bolts, etc.

CP861 ★★



20,000 RPM



DURABILITY & POWER

FEATURES

- Rugged, energy efficient 0.5hp (370 W) motor
- Lightweight tool: 1.63 lbs (0.74kg)
- Square handle design for positive grip

BENEFITS

- Power, durability and productivity
- Excellent for cutting through composite, fiberglass, steel metal, bolts, clamps.

CP9116 ★



14,000 RPM



POWERFUL & EASY TO USE

FEATURES

- Composite grip to reduce cold air transmission to operators
- Spindle lock system for easier wheel changing
- 11 position adjustable swivel guard – 126° adjustable for better operator protection & greater visibility of cutting operations

BENEFITS

- Extended Length & Compact Gear Housing
- Safety & Convenient
- Ideal for cutting composite, metal, bolts, ... especially in tight spaces

CP873 ★

2,800 RPM



CP873K

See details page 189

LOW SPEED

FEATURES

- Adjustable speed control
- Quick change slip chuck
- Lock-off lever to prevent accidental start-up

BENEFITS

- Must have pneumatic buffing tool
- Fast and easy change of buffing wheel
- Ideal for patchwork, roughing areas for recapping and cleaning tire moldings



See accessories on pages 189

GENERAL MAINTENANCE
 INDUSTRIAL MAINTENANCE & PRODUCTION
 SUPER INDUSTRIAL

| MODEL | PART NUMBER | POWER | | CHUCK / WHEEL SIZE | | FREE SPEED | AIR CONS @LOAD | | LENGTH | | WEIGHT | | VIBRATION LEVEL ISO 28927 (M/S2) | | SOUND PRESS. | SOUND POWER | AIR INLET |
|-----------|--------------|-------|-----|--------------------|-----|------------|----------------|-----|--------|-----|--------|-----|----------------------------------|-----|-------------------|-------------|-----------|
| | | hp | W | in. | mm | rpm | cfm | l/s | in. | mm | lb | kg | a | K | ISO 15744 - dB(A) | in. | |
| CP861 | T022039 | 0.5 | 370 | 2-7/8 | 73 | 20,000 | 8.5 | 4.0 | 7.8 | 197 | 1.6 | 0.7 | 2.8 | 1.0 | 79 | 90 | 1/4 |
| CP873 | T025374 | 0.5 | 370 | 7/16 hex | 11 | 2,800 | 13.0 | 6.1 | 8.3 | 210 | 2.3 | 1.0 | <2.5 | - | 88 | 99 | 1/4 |
| CP874 | T025375 | 0.5 | 370 | 2-7/8 | 73 | 22,000 | 12.5 | 5.9 | 7.3 | 184 | 1.8 | 0.8 | 4 | 4.0 | 88 | 99 | 1/4 |
| CP9116 | 894 109 1160 | 1.0 | 746 | 4 | 100 | 14,000 | 7.0 | 3.3 | 14.8 | 370 | 3.7 | 1.8 | 3 | 3.0 | 86 | 97 | 1/4 |
| CP9116 US | 894 109 1161 | 1.0 | 746 | 4 | 100 | 14,000 | 7.0 | 3.3 | 14.8 | 370 | 3.7 | 1.8 | 3 | 3.0 | 86 | 97 | 1/4 |

All models: Hose int. 3/8" (9.5mm) - @90 PSI (@6.3 Bar)

Listed specifications are for reference only. Please check documents in each tool or on www.cp.com

SPECIALTY TOOLS

Nibbling, Shearing and Filing

CP835 ★



GOOD CUTTING CONTROL

FEATURES

- Rugged head and 0.177" diameter punch cuts steel up to .060" (16 gauge) and aluminum up to .102 (10 gauge)
- Easy access to punch and die for quick replacement
- Lock-off lever for low-speed starting

BENEFITS

- Perfect for accurate cutting and best for tight corners and circles
- Used for nibbling plastic, tin, aluminum and others metals

CP785S ★★



RELIABLE & POWERFUL

FEATURES

- Powerful efficient 0.5 hp (370 W) motor to cut up to 18-gauge steel (1.1 mm - 0.04")
- Triple idler planetary gearing
- Ergonomic handle design

BENEFITS

- Smooth operation and extended life
- Operator comfort
- Reliable cutting performance

CP9705 ★



CP9710

Similar features as CP9705 with 8,000 strokes/min.

POWERFUL & PRECISE

FEATURES

- Air file 0.2" (5mm) stroke
- Lock-off lever to prevent accidental start-up
- 360° swivel air inlet

BENEFITS

- Excellent tool for use in confined areas
- Ideal for precise work
- Deburring or sharpening sheet metal, iron or plastic



CP9710



See accessories on pages 189

★ GENERAL MAINTENANCE ★★ INDUSTRIAL MAINTENANCE & PRODUCTION ★★★ SUPER INDUSTRIAL

| MODEL | PART NUMBER | STROKES PER MIN | AIR CONS @LOAD | | LENGTH | | WEIGHT | | VIBRATION LEVEL ISO 28927 (M/S ²) | | SOUND PRESSURE | SOUND POWER | AIR INLET |
|--------|--------------|-----------------|----------------|-----|--------|-----|--------|-----|---|-----|----------------|-------------|-----------|
| | | | cfm | l/s | in. | mm | lb | kg | a | K | | | |
| CP785S | T023200 | 2,400 | 15.5 | 7.3 | 8.3 | 229 | 2.5 | 0.9 | 3.2 | 3.0 | 84 | 95 | 1/4 |
| CP835 | T022550 | 2,750 | 17.0 | 8.0 | 7.5 | 216 | 2.3 | 0.6 | 5.4 | 3.0 | 86 | 97 | 1/4 |
| CP9705 | 615 193 9705 | 12,000 | 6.0 | 2.8 | 8.0 | 204 | 1.2 | 0.6 | 5 | 3.0 | 73 | 84 | 1/4 |
| CP9710 | 615 193 9710 | 8,000 | 6.0 | 2.8 | 9.8 | 250 | 1.3 | 0.6 | 5 | 3.0 | 63 | 74 | 1/4 |

All models: Hose int. 3/8" (9.5mm) - @90 PSI (@6.3 Bar)

Listed specifications are for reference only. Please check documents in each tool or on www.cp.com

Kits - Accessories - Spares



Kits



CP7901 Kit

Part No. 894 107 9010

Kit includes:

- (1) Heavy duty saw CP7901
- (5) Each 18T, 24T, 32T blades
- (1) Swivel inlet in a heavy duty case



CP873 Kit

Part No. CP873K

Kit Includes:

- (1) Low speed tire buffer CP873
- (1) Whip hose and exhaust hose



CP7901

OPTIONAL ACCESSORIES



SAW BLADES FOR CP7901

| ACCESSORIES | PART NUMBER |
|--------------------|---------------------|
| 18T Saw blades (5) | 894 015 8775 |
| 24T Saw blades (5) | 894 015 8776 |
| 32T Saw blades (5) | 894 015 8777 |



SAW BLADES FOR CP7900 & CP881

| ACCESSORIES | PART NUMBER |
|--------------------|-----------------|
| 18T Saw blades (5) | CA146719 |
| 24T Saw blades (5) | CA146720 |
| 32T Saw blades (5) | CA146721 |

PUNCH FOR CP835

| ACCESSORIES | PART NUMBER |
|-------------|-----------------|
| Punch set | KF137310 |
| Die | KF137273 |

WHEELS FOR CP861 & CP874

| ACCESSORIES | PART NUMBER |
|---|-----------------|
| Package of 5 wheels (\varnothing 2-7/8" x 1/16" x 3/8" - 73x1.6x9.52mm) | CA155312 |



WHEELS FOR CP9116

| ACCESSORIES | PART NUMBER |
|---|---------------------|
| Cut-off grinding wheel 3/8" – 1 piece (size : 4" (100 mm) - (1/16" X 3/8") (1/8" X 3/8")) | 894 017 2786 |



SHANK FILE FOR CP9705 AND CP9710

| ACCESSORIES | PART NUMBER |
|---------------------------------------|---------------------|
| 0.2" (5mm) Shank file rectangular (5) | 205 051 9113 |
| 0.2" (5mm) Shank file round (5) | 205 051 9123 |
| 0.2" (5mm) Shank file half round (5) | 205 051 9133 |
| 0.2" (5mm) Shank file triangular (5) | 205 051 9143 |



TUNE-UP KIT

| MODEL | TUNE-UP KIT |
|---------------|---------------------|
| CP9160 | 205 050 6913 |
| CP9882 | 894 016 9881 |

