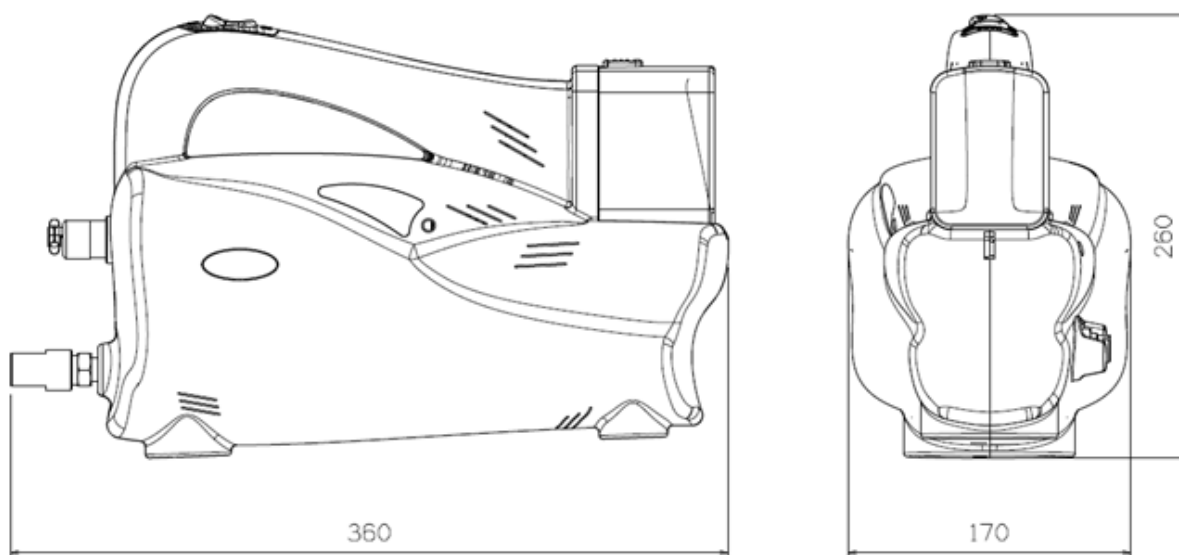


Prepared by:-	Patrick Wright		Approved by:-	Martin Davies		Date:08/10/14
REV NO:-	001					
ECO:-	4294					

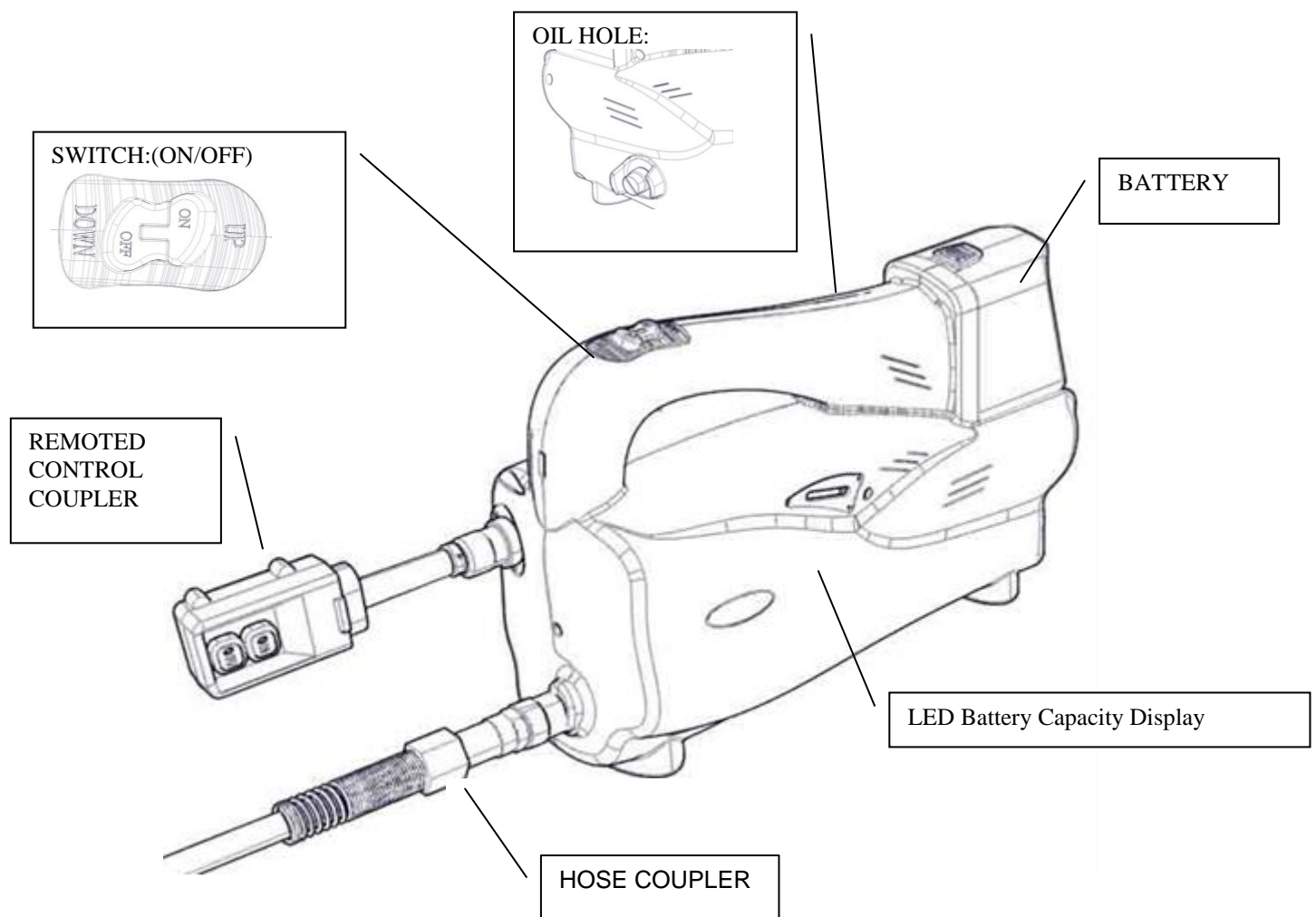
SPECIFICATION:-

MODEL	BPP107
MAX .PRESSURE	700 Kg/cm ²
MIN.PRESSURE	20 Kg/cm ²
MAX. OIL DELIVERY	150 c.c.
MIN. OIL DELIVERY	500 c.c.
RESERVOIR CAPACITY	700 c.c.
VOLTAGE	14.4V
LENGTH	360mm
HIGH	260mm
WIDTH	170mm
WEIGHT (WITHOUT BATTERY)	7.8Kg
ACCESSORY	BP12:(14.4V Ni-MH battery) 1.8M HOSE*1 WIRE REMOTED CONTROL*1

Prepared by:-	Patrick Wright		Approved by:-	Martin Davies		Date:08/10/14
REV NO:-	001					
ECO:-	4294					

REMARKS BEFORE OPERATION OR WHILE OPERATING

- Please be sure the tool with any greasy dirt and damage.
- The hose can be bended but the half-length is more than 110mm.
- Before using pump, please connect it with suitable tools
- Our hose is not insulated, so do not put the pump closed a fire situation.
- Do not change its pressure in advance.(the max. pressure is 700kg/cm²)



Prepared by:-	Patrick Wright		Approved by:-	Martin Davies		Date:08/10/14
REV NO:-	001					
ECO:-	4294					

How to operate the pump?

- ◆ Insert a battery into the position.<image 1>

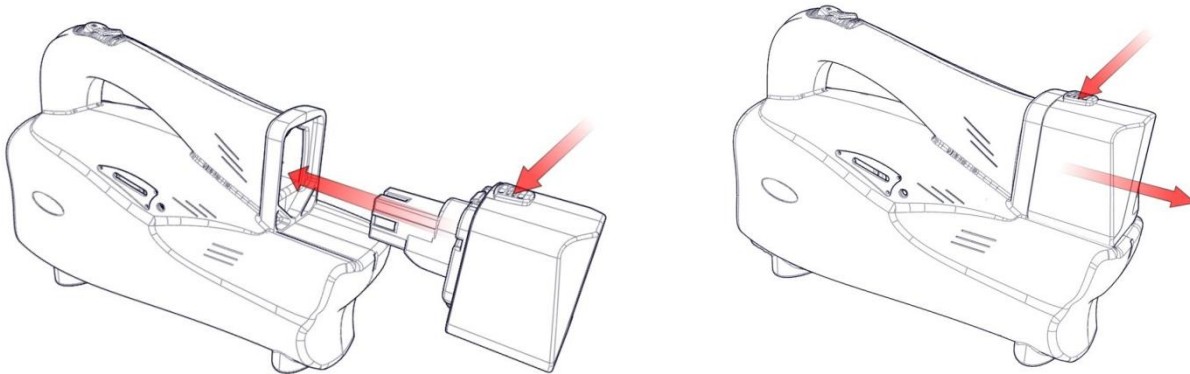


Image 1: take a battery in or out

- ◆ Connect the Remote Control to the pump.<image 2>
Notice: turn the Remote Control clockwise to lock the pump;
turn the Remote Control anti-clockwise to unlock the pump.

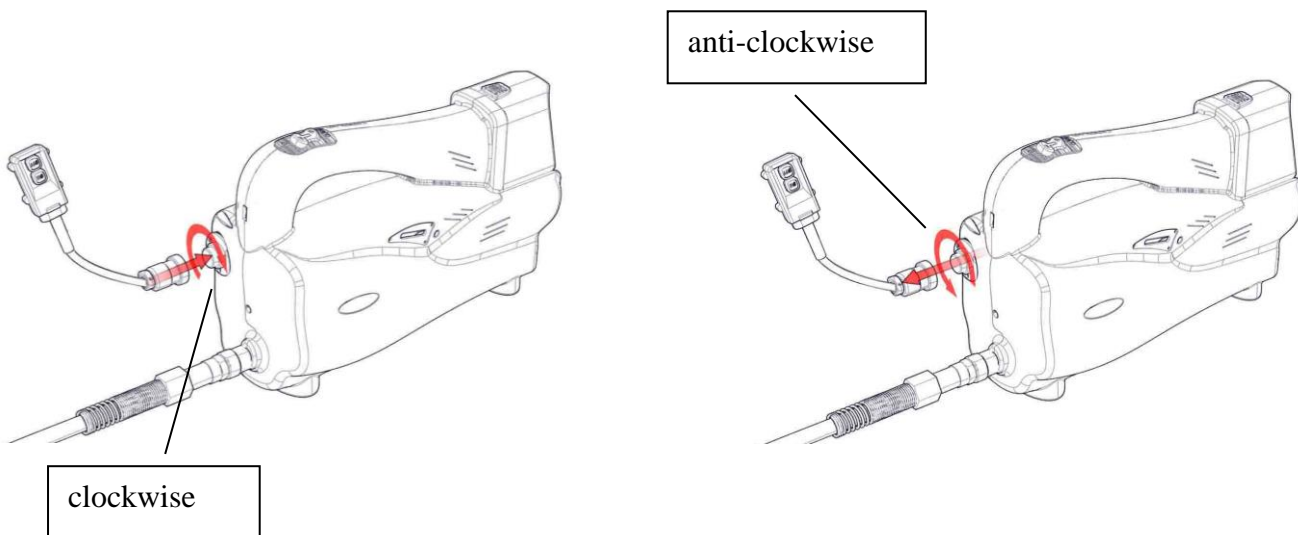


Image 2: turn the Remote Control in or out

Hi-Force® HYDRAULIC TOOLS		BPP107 BATTERY POWERED HYDRAULIC PUMP <u>OPERATING INSTRUCTIONS</u>		TDS:- 1409
Prepared by:-	Patrick Wright		Approved by:-	Martin Davies
REV NO:-	001			
ECO:-	4294			
				Date:08/10/14

- ◆ Connect the hydraulic hose to the suitable tool.(image 3 & 4)
 - After connect the hydraulic hose, lock the nut of hose to the tool clockwise tightly.

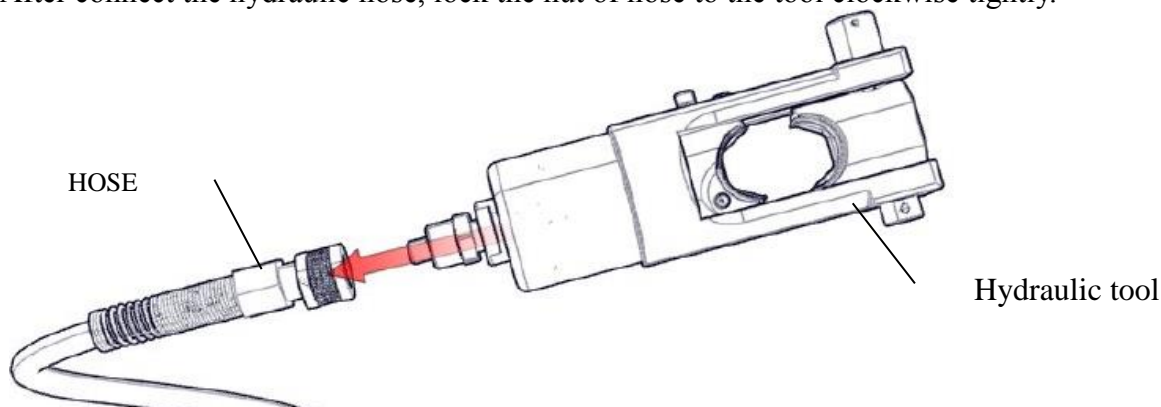


Image 3: connect the hose & tool together

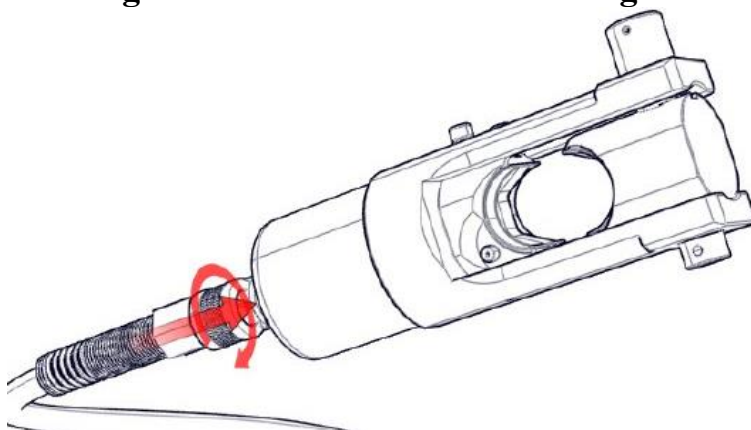


Image 4: turn the nut to the tool tightly

- ◆ Press “ON” button on the switch to operate the pump.<image 5>
 - Press “OFF” button on the switch, but the tools cannot crimp or release.

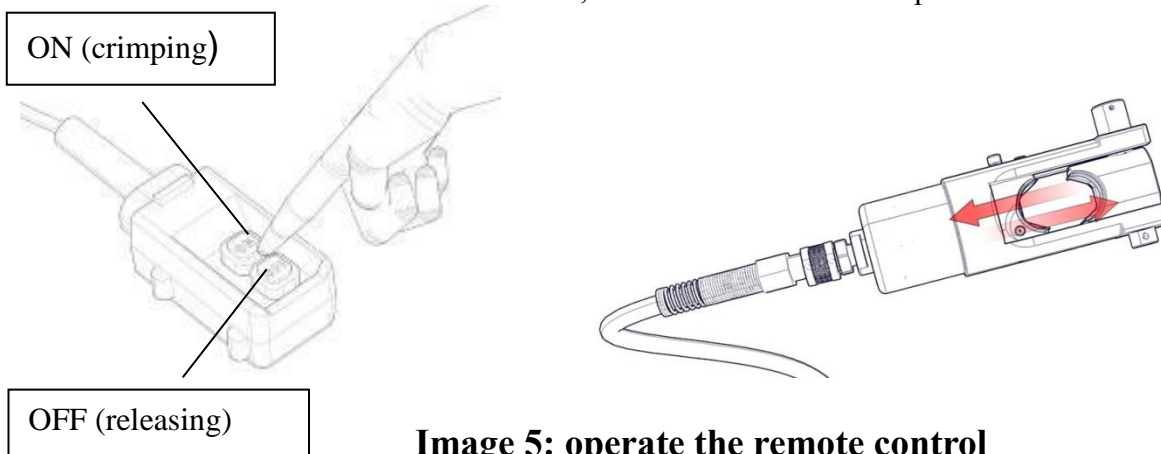


Image 5: operate the remote control

Hi-Force® HYDRAULIC TOOLS		<u>BPP107 BATTERY POWERED HYDRAULIC PUMP</u> <u>OPERATING INSTRUCTIONS</u>		TDS:- 1409
Prepared by:-	Patrick Wright		Approved by:-	Martin Davies
REV NO:-	001			
ECO:-	4294			
				Date:08/10/14

- ◆ While crimping, please kindly notice the Battery Capacity LED Display on the body of pump.<Image 6>

Light Color	Meaning
Red/Yellow/Green	Full Capacity
Red/Yellow	Low Capacity
Red	Without any Capacity Please replace a full-charged battery
No Light	No electricity/Error connection

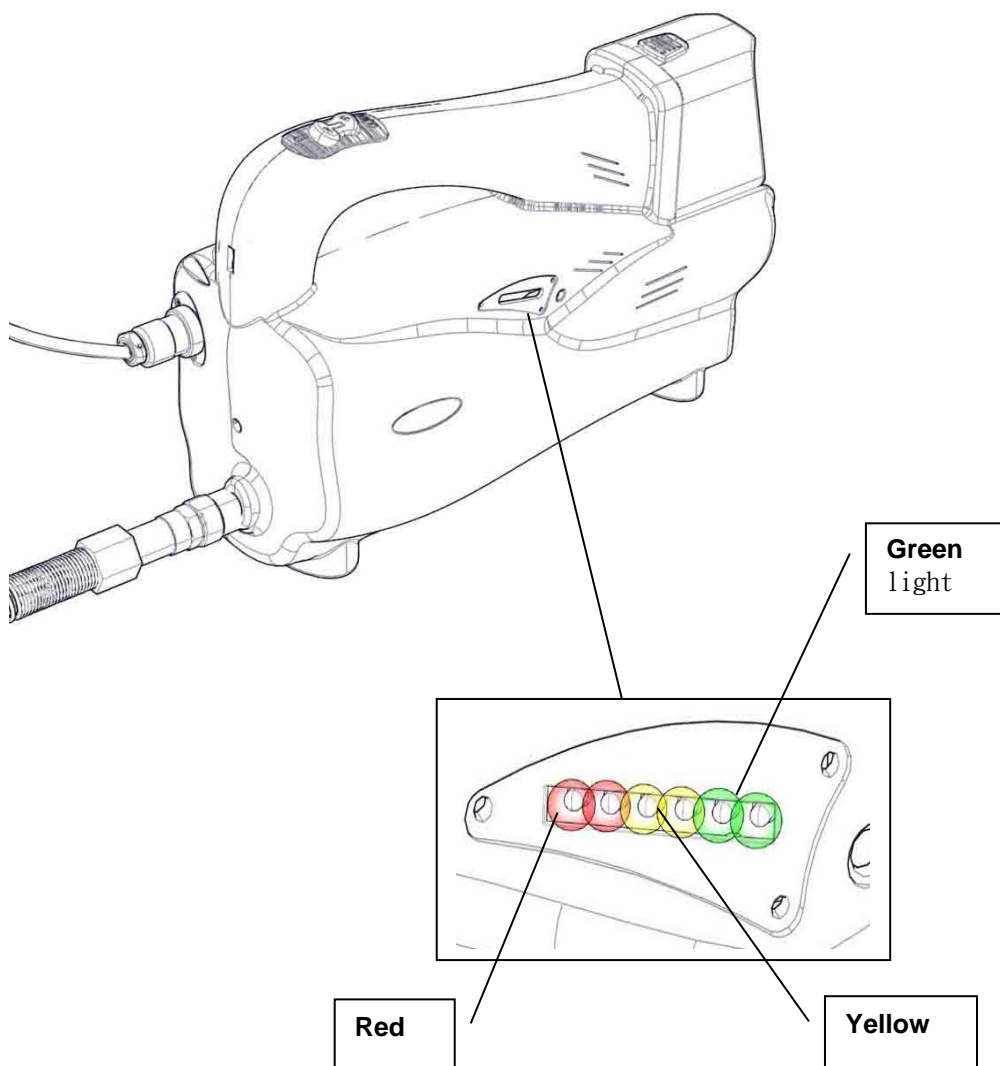


Image 6: LED Display of Battery Capacity

Hi-Force® HYDRAULIC TOOLS		<u>BPP107 BATTERY POWERED HYDRAULIC PUMP</u> <u>OPERATING INSTRUCTIONS</u>		TDS:- 1409
Prepared by:-	Patrick Wright		Approved by:-	Martin Davies
REV NO:-	001			
ECO:-	4294			
				Date:08/10/14

◆ MAINTENANCE & ELIMINATE BREAKDOWN:

MAINTENANCE :

1. Q : Change oil or refuel oil:

A : Usually change fresh oil to keep its quality for lengthen its life and operate well. Always use Hi-Force recommended hydraulic oil. Do not mix other brand oils together in case any damage to affect its function.

2. Q: Prolonged storage without use:

- A: 1. Take out the battery and charge if it will not be used for a long time. Discharge and charge battery every two months to prolong its life.
2. Clean the tool and smear the anti-rust oil on crimping head and die before storage. Store the battery and pump in a clean and dry environment.

ELIMINATE BREAKDOWN :

1. Q: How to add oil in the pump body?

A: Turn the screw out by a “slotted screwdriver” and add oil in the pump body.
After filling it to full, turn the screw in it. <image 7&8>

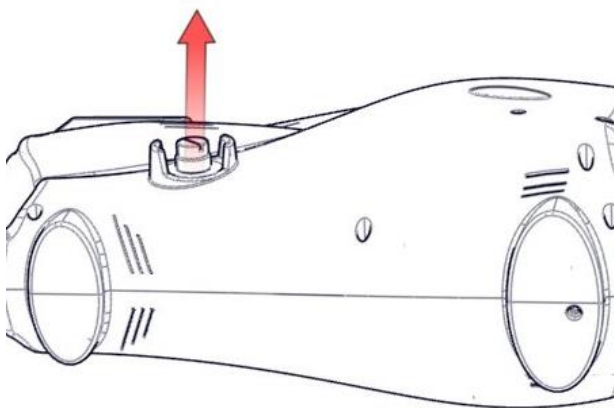


Image 7: turn the screw out

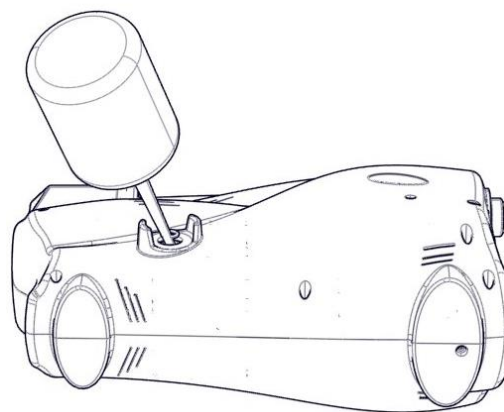


Image 8: add oil in it

2. Q: Operating the pump, but it cannot release and return to the origin position.

A: Check the pump according to four steps.

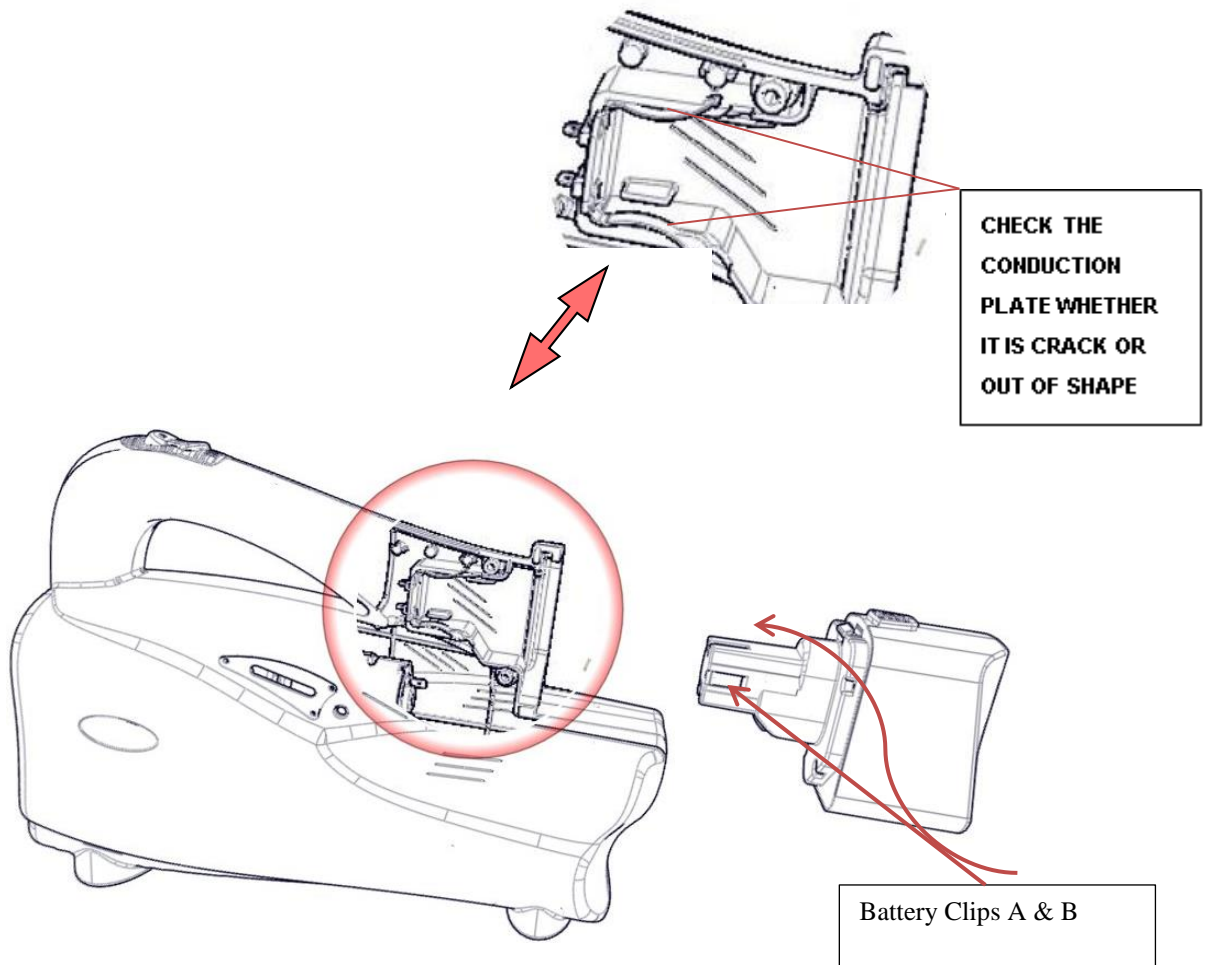
- <1> check the oil if it is not enough, (If no, choosing the suitable oil to fill.)
- <2> check if there is any air in the oil reservoir, (add the suitable oil to full).
- <3> check if there is impurities inside the reservoir, (renew the oil).
- <4> check if there are impurities inside the body, (take apart the inner parts clean them then reassemble).

Prepared by:-	Patrick Wright		Approved by:-	Martin Davies	Date:08/10/14
REV NO:-	001				
ECO:-	4294				

3. Q: When insert a battery in the pump, but it cannot to electrify.

A: Check the reason:

- <1> check the conduction plate and insulate plate. If they are out of shape by extruded and broken caused contact failure. It needs to adjust or change the parts.
- <2> check the battery clips A & B. If they become rusty or out of the right position. They need to be rid of rusty and put in the right position.(image 9)



Prepared by:-	Patrick Wright		Approved by:-	Martin Davies		Date:08/10/14
REV NO:-	001					
ECO:-	4294					

4. Q: Using the pump for a long time or inappropriate using, it will cause the pressure over or under the standard. How to adjust the pressure?

A: Follow below steps.(image 10)

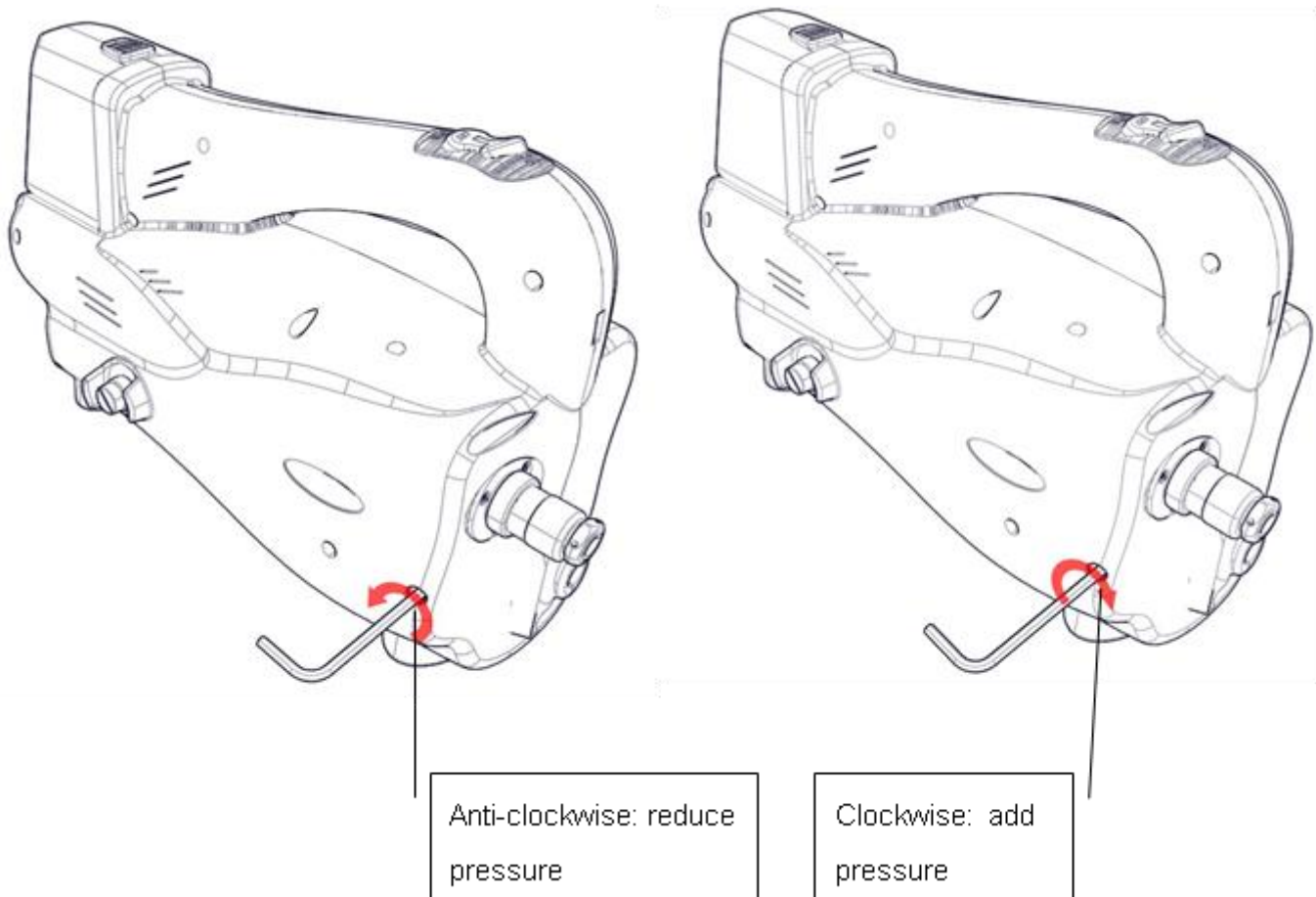


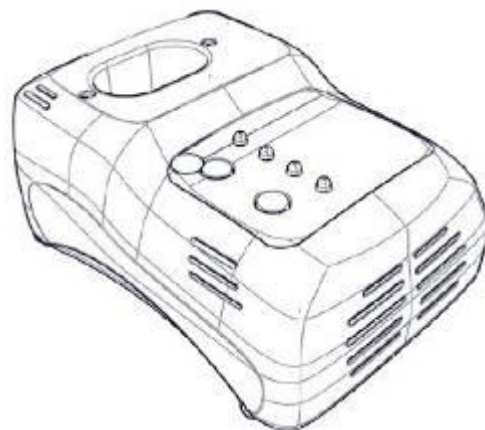
Image 10: adjust pressure

- ◆ After adjusting to the positive pressure, put the cover in the hole.
 - Using a "No.4 Allen key" to adjust the pressure.
 - Be sure do not adjust the pressure aggressively, the pressure must adjusted in small increments.

Hi-Force® HYDRAULIC TOOLS		<u>BPP107 BATTERY POWERED HYDRAULIC PUMP</u> <u>OPERATING INSTRUCTIONS</u>		TDS:- 1409
Prepared by:-	Patrick Wright		Approved by:-	Martin Davies
REV NO:-	001			Date:08/10/14
ECO:-	4294			

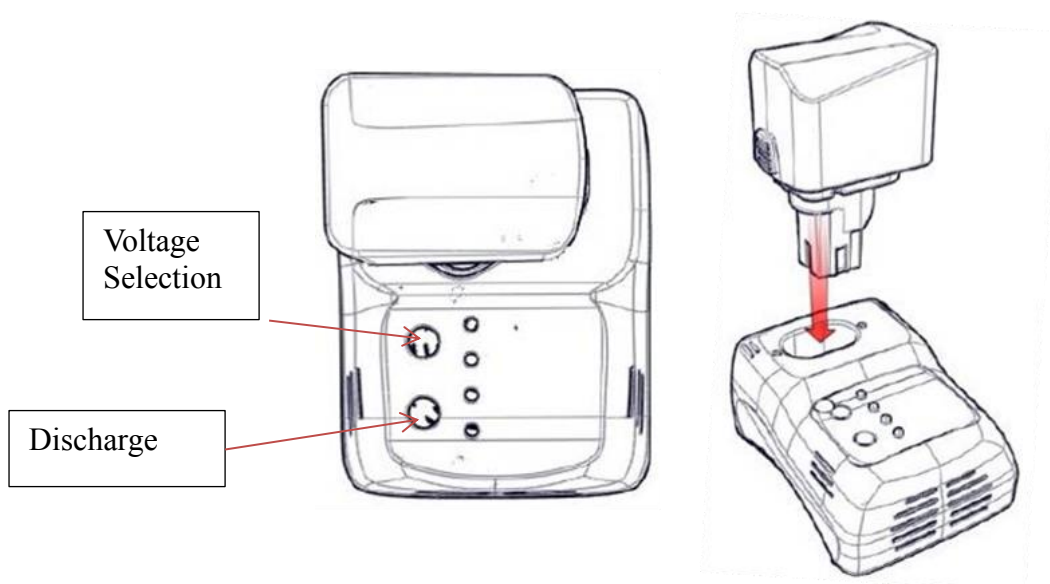
HOW TO OPERATE/USE CU12 CHARGER

- ◆ The charger CU12 can charge Ni-MH Battery BP12 (14.4V).
- ◆ After discharging, while the temperature is below 40 degree, the charger will charge automatically.



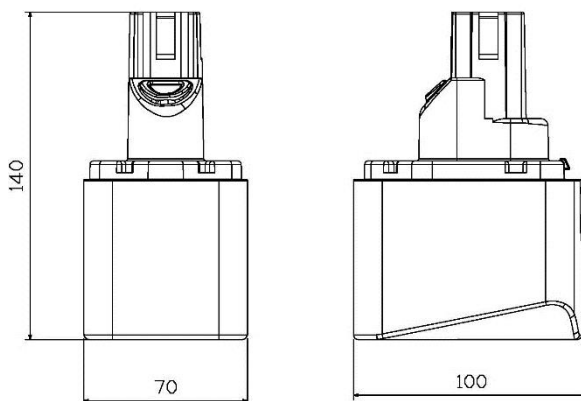
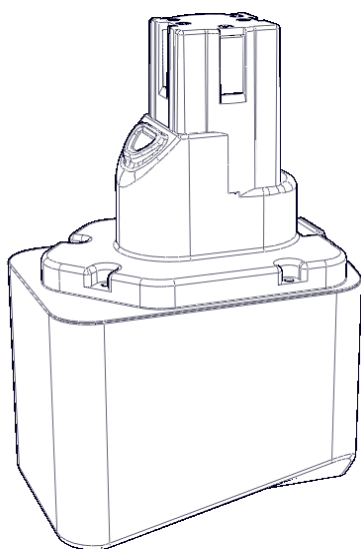
LED LIGHT DESCRIPTIONS

RED	Twinkling	Waiting for operation
RED	Shining	Temperature/Voltage is over Buzzer buzzes once a second
GREEN	Twinkling	Well charged Buzzer buzzes once five seconds
GREEN	Shining	Charging
ORANGE	Twinkling	Well discharged
ORANGE	Shining	Discharging



Hi-Force® HYDRAULIC TOOLS		BPP107 BATTERY POWERED HYDRAULIC PUMP <u>OPERATING INSTRUCTIONS</u>		TDS:- 1409
Prepared by:-	Patrick Wright		Approved by:-	Martin Davies
REV NO:-	001			Date:08/10/14
ECO:-	4294			

BP12



SPECIFICATION	
MODEL NO.	BP12
VOLTAGE	14.4V
WEIGHT	0.86 KG
DIMENSION	100mm(L)x70mm(W)x140mm(H)
CHARGING TIME	80-90 MINUTES
CAPACITY	3Ah
MEMORY EFFECT	YES

• Please follow the battery manual for correct instruction.
 The company does not guarantee against due to improper handling or use.


MANUAL/INSTRUCTION OF BATTERY

SPECIFICATION

Voltage	9.6V	14.4V	18V	CURRENT	CHARGING
Ni-MH		BP12	-	3Ah	90 MIN.

BEFORE OPERATION PLEASE NOTE

- ◆ Do not put the battery together with any metal. Otherwise the battery may short circuit.
- ◆ Do not store the battery in a wet/hot area. Put battery in a dry clean area.
- ◆ Do not give the battery to children. Keep the battery away from the children.
- ◆ The electric capacity of battery may be lost and the battery may be damaged if the battery is left in the tool or charger for a long time.
- ◆ Do not heat the battery or put the battery in the fire.
- ◆ Keep the battery away from water. Please keep the battery dry & clean.
- ◆ Do not press/take apart/throw down the battery. Do not leave the battery near water or fire. Also do not put the battery in your pocket.
- ◆ Do not destroy the housing/package/body of battery.
- ◆ Do not use old transformed battery with strange/abnormal appearance.
- ◆ The battery after use will be a little warm.

		BPP107 BATTERY POWERED HYDRAULIC PUMP <u>OPERATING INSTRUCTIONS</u>		TDS:- 1409
Prepared by:-	Patrick Wright		Approved by:-	Martin Davies
REV NO:-	001			Date:08/10/14
ECO:-	4294			


- ◆ The battery at low temperature (10 Degree or below), the battery will deteriorate and its use time will be shorter. This is normal.
- ◆ Please follow the instruction of battery manual to charge the battery.
- ◆ Do not charge the battery directly under the sun or in a space with high temperature.
- ◆ Please use Hi-Force charger to charge the Hi-Force battery.
- ◆ Do not use a battery of another brand.
- ◆ Please charge the battery before storage if you will not use the battery for a prolonged period. Please charge the battery at least once a month to ensure its life.

HOW TO CLEAN THE BATTERY

- ◆ If the connecting points (+/-) or the cap of battery are dirty. It may cause interfere with the electric current. Therefore you will find the digital monitor will still show “Without Power” under full charged.
- ◆ Please keep the connecting points (+/-) or the cap of battery clean. Please use dry soft cloth to wipe the battery housing/cap and even the connecting points (+/-).
- ◆ Do not use cleaner or chemical cleaner to clean the battery or charger, otherwise they will be damaged.

RECYCLE & THROW AWAY

- ◆ Make the battery is fully discharged before throwing the battery away.
- ◆ Fully charge the battery at first time of use.
- ◆ If the battery's use time is shorter after many applications, it means a new battery is required.
- ◆ Please stick gummed tapes on the connecting points (+/-) fire/explosion prevention. Please follow the local rules for recycling.

		BPP107 BATTERY POWERED HYDRAULIC PUMP OPERATING INSTRUCTIONS		TDS:- 1409
Prepared by:-	Patrick Wright	Approved by:-	Martin Davies	Date:08/10/14
REV NO:-	001			
ECO:-	4294			

UK Head Office:

Hi-Force Limited
Prospect Way, Daventry, Northamptonshire
NN11 8PL
United Kingdom

Tel: + 44 1327 301000
Fax: + 44 1327 706555
Email: daventry@hi-force.com

Hi-Force Regional Offices:

Hi-Force Caspian Baku Azerbaijan Tel: +994 12 447 4100 Email: baku@hi-force.com	Hi-Force S.r.l. Milan Italy Tel: +39 0253 031 088 Email: italy@hi-force.com
Hi-Force Hydraulics (Asia) S.B Selangor Malaysia Tel: +603 5525 4203 Email: malaysia@hi-force.com	Hi-Force Nederland BV Strijen Netherlands Tel: +31 78 674 5488 Email: holland@hi-force.com
Hi-Force Hydraulics (Pty) Ltd Midrand South Africa Tel: +27 11 314 0555 Email: south.africa@hi-force.com	Hi-Force Aberdeen Aberdeen United Kingdom Tel: +44 1224 973 512 Email: dubai@hi-force.com
Hi-Force Hydraulics Abu Dhabi United Arab Emirates Tel: +971 2 551 3100 Email: abu.dhabi@hi-force.com	Hi-Force FZCO Dubai United Arab Emirates Tel: +971 4 815 0600 Email: dubai@hi-force.com

GLOBAL BRAND. LOCAL SERVICE.

www.hi-force.com