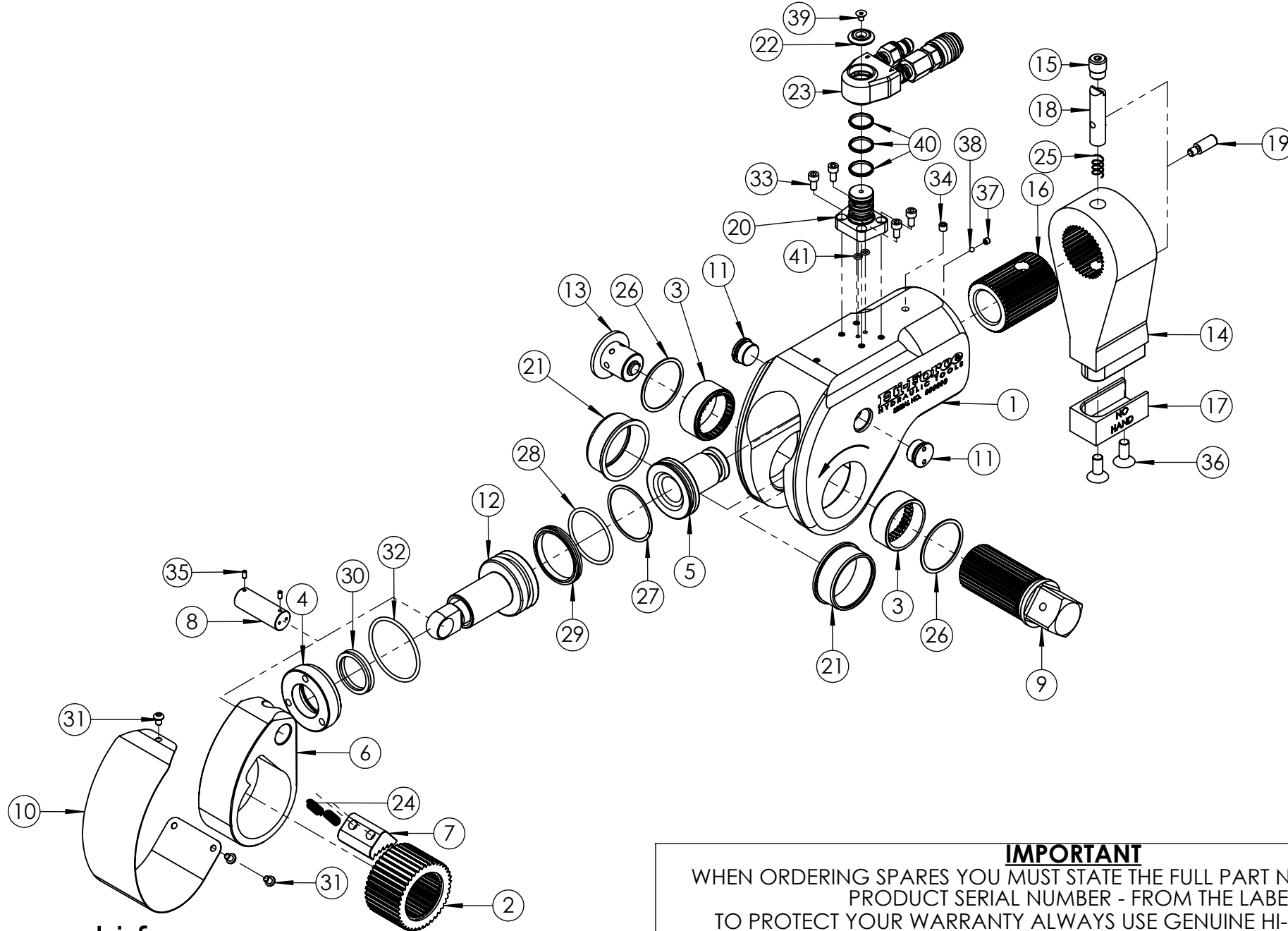


1	
2	
3	
4	3891
5	6265
6	
7	
8	
9	
10	
11	
12	
13	
14	
15	
16	
17	
18	
19	
20	



IMPORTANT

WHEN ORDERING SPARES YOU MUST STATE THE FULL PART NUMBER AND THE PRODUCT SERIAL NUMBER - FROM THE LABEL TO PROTECT YOUR WARRANTY ALWAYS USE GENUINE HI-FORCE PARTS.

TWS TORQUE TOOL

SERIAL NUMBERS

FROM BB2686

PRODUCT NO.

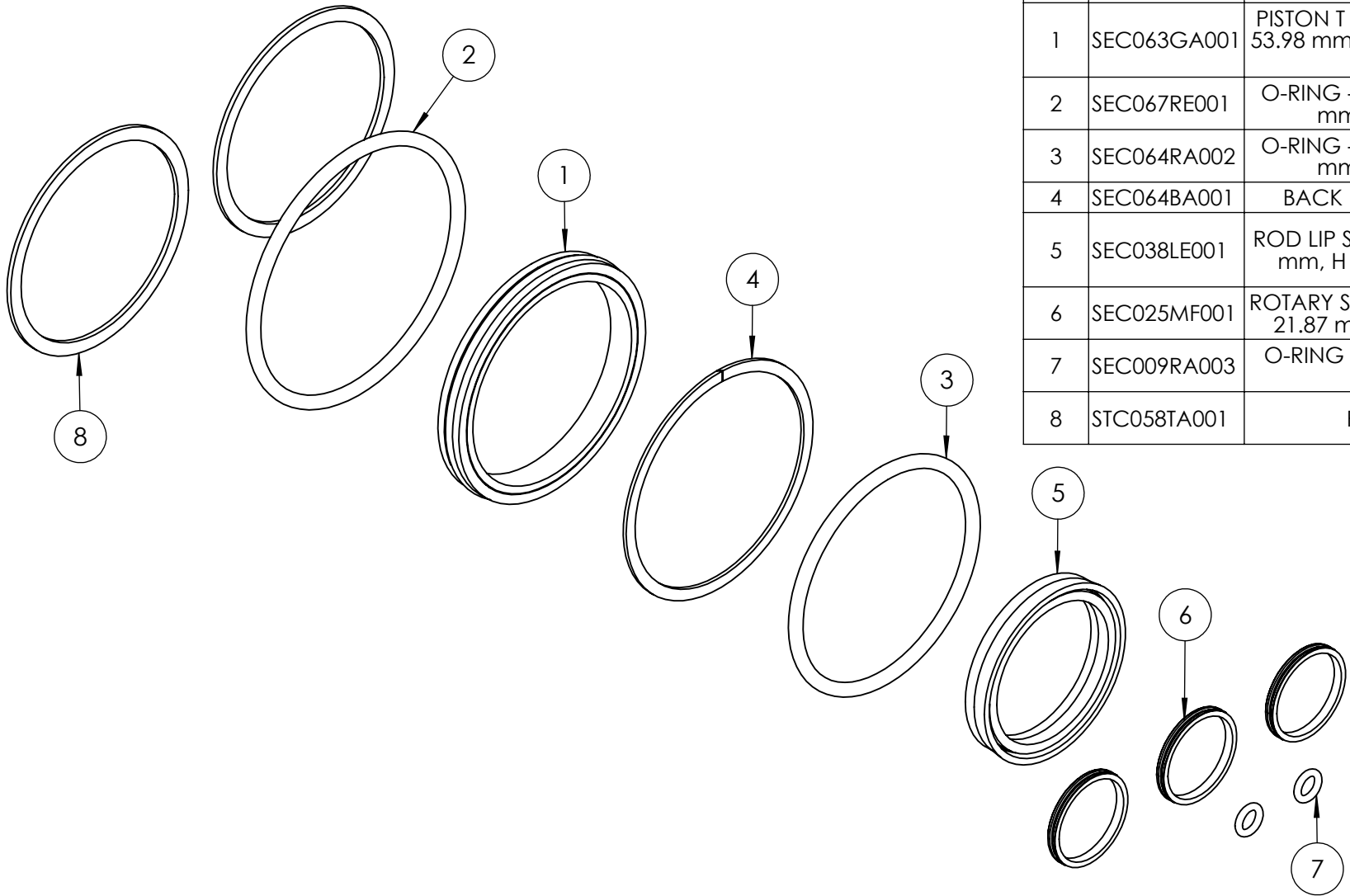
TWS150N

 SHT 2 OF
2 SHTS

ITEM NO.	PART NUMBER	DESCRIPTION	QTY.	SPARE PARTS	SERVICE PARTS	ITEM NO.	PART NUMBER	DESCRIPTION	QTY.	SPARE PARTS	SERVICE PARTS	REVISION
1	TTC150BA002	BODY	1	x		31	BLC006JH008	M6 x 8 SOCKET BUTTON HEAD SCREW	3			1
2	TTC150WS001	RATCHET WHEEL	1			32	SEC067RE001	O-RING - I.D. 66.04 mm, C.S. 3.53 mm, NITRILE 90 SHORE	1		✓	2
3	TTC150FB001	BEARING	2			33	BLC006JC012	M6 x 12 SOCKET CAP HEAD SCREW	4			3
4	TTC150GB001	GLAND	1			34	FPC002PN001	1/16"NPTF x 7/8" TAPER PLUG	1			4 3891
5	TTC150ES001	END PLUG	1			35	FAS004ME008	M4 x 8 SOCKET CUP POINT SCREW	2			5 6265
6	TTC150CS001	DRIVE PLATE	1			36	BLC010LF025	M10 x 25 SOCKET COUNTERSUNK SCREW	2			6
7	TTC150PS001	DRIVE SEGMENT	1			37	FAS006MB005	SOCKET CUP POINT SCREW M6 x 5	1			7
8	TTC150JS001	DRIVE PIN	1			38	BAC005SN001	3/16" BALL	1			8
9	TTC150DS001	SQUARE DRIVE	1			39	BLC005HF008	SOCKET CSK SCREW M5 x 8	1			9
10	TTC150LS002	SHROUD	1			40	SEC025MF001	ROTARY SEAL - O.D. 25.01 mm, I.D. 21.87 mm, H. 2.4 mm HPU-R95	3		✓	10
11	TTC150AA001	PLUG	2			41	SEC009RA003	O-RING - I.D. 5.28 mm, C.S. 1.78 mm NITRILE 70	2		✓	11
12	TTA150NS001	PISTON ASSEMBLY	1			NOTE: - ALL PARTS ARE AVAILABLE TO BE ORDERED AS SPARE PARTS (UNLESS MARKED WITH x). - ONLY PARTS MARKED WITH ✓ ARE AVAILABLE AS BOTH SPARE PARTS OR SERVICEABLE PARTS, FROM TWS150NTP3-K SERVICE KIT . (REFER TO TWS150NTP3-K: SERVICE KIT EVD FOR FULL PARTS LIST). - FOR SUB ASSEMBLIES (ITEM NO 23) REFER TO THEIR INDIVIDUAL EVD's.						12
13	TTA150LA001	RELEASE BUTTON ASSEMBLY	1									13
14	TTC150QA002	REACTION ARM	1									14
15	TTC150AS001	PLUG	1									15
16	TTC150KS001	SPLINE SLEEVE	1									16
17	TTC150ES002	END CAP	1									17
18	TTC150JS002	LATCH PIN	1									18
19	TTC150JS003	RELEASE	1									19
20	TTC100SA001	MALE SWIVEL CONNECTOR	1									20
21	TTC150FS002	SLEEVE	2									
22	TTC045SA003	SWIVEL CONNECTOR CAP	1									
23	TTA045SA002	SWIVEL CONNECTOR ASSEMBLY	1									
24	SPC009CA003	SPRING	2									
25	SPC012CA003	SPRING	1									
26	STC058TA001	RETAINING RING	2		✓							
27	SEC064BA001	Backup ring – O.D. 63.50 mm I.D. 57.40 mm H. 1 mm PTFE	1		✓							
28	SEC064RA002	O-RING - I.D. 56.74 mm, C.S. 3.53 mm, NITRILE 90 SHORE	1		✓							
29	SEC063GA001	PISTON T SEAL - O.D. 63.5 mm, I.D. 53.98 mm, H 7.11 mm, NBR/NYLON 70 SHORE	1		✓							
30	SEC038LE001	ROD LIP SEAL - O.D. 48 mm, I.D. 38 mm, H 7 mm, POLYURETHANE	1		✓							

IMPORTANT

WHEN ORDERING SPARES YOU MUST STATE THE FULL PART NUMBER AND THE PRODUCT SERIAL NUMBER - FROM THE LABEL TO PROTECT YOUR WARRANTY ALWAYS USE GENUINE HI-FORCE PARTS.



ITEM NO.	PART NUMBER	DESCRIPTION	QTY.	REVISION
1	SEC063GA001	PISTON T SEAL - O.D. 63.5 mm, I.D. 53.98 mm, H 7.11 mm, NBR/NYLON 70 SHORE	1	1 6265
2	SEC067RE001	O-RING - I.D. 66.04 mm, C.S. 3.53 mm, NITRILE 90 SHORE	1	2
3	SEC064RA002	O-RING - I.D. 56.74 mm, C.S. 3.53 mm, NITRILE 90 SHORE	1	3
4	SEC064BA001	BACK UP RING TO SUIT BS228	1	4
5	SEC038LE001	ROD LIP SEAL - O.D. 48 mm, I.D. 38 mm, H 7 mm, POLYURETHANE	1	5
6	SEC025MF001	ROTARY SEAL - O.D. 25.01 mm, I.D. 21.87 mm, H. 2.4 mm HPU-R95	3	6
7	SEC009RA003	O-RING - I.D. 5.28 mm, C.S. 1.78 mm NITRILE 70	2	7
8	STC058TA001	RETAINING RING	2	8

9
10
11
12
13
14
15
16
17
18
19
20

IMPORTANT

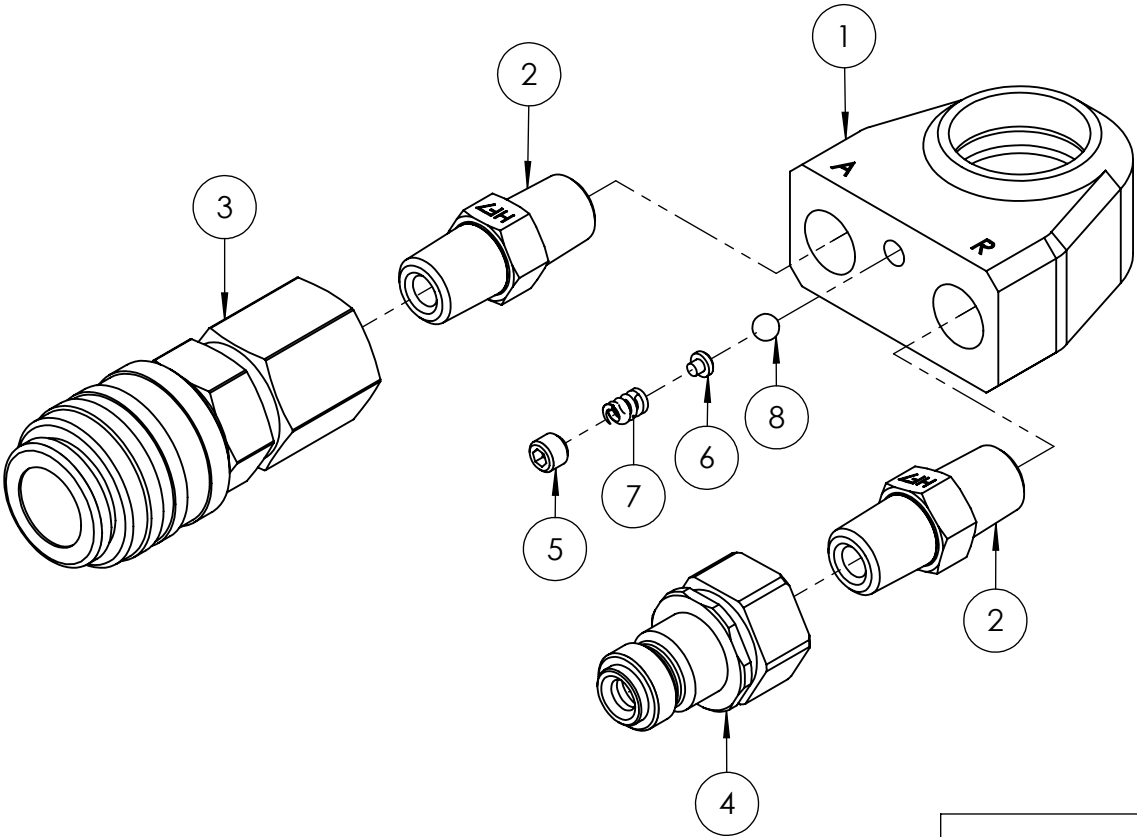
WHEN ORDERING SPARES YOU MUST STATE THE FULL PART NUMBER AND THE PRODUCT SERIAL NUMBER - FROM THE LABEL TO PROTECT YOUR WARRANTY ALWAYS USE GENUINE HI-FORCE PARTS.

ITEM NO.	PART NUMBER	DESCRIPTION	QTY.	SPARE PARTS
1	TTC045SA002	FEMALE SWIVEL CONNECTOR	1	✗
2	HF7	1/4" NPT MALE ADAPTOR	2	✗
3	CF4F	COUPLER	1	
4	CM4F	COUPLER	1	
5	FAS006MA005	SKT FLAT POINT SCREW M6 x 5 (LOCKING)	1	✗
6	VRA280GB001	SPRING SEAT	1	✗
7	SPC005CA008	COMPRESSION SPRING	1	✗
8	BAC005SN001	3/16" BALL CHROME STEEL	1	✗

REVISION	
1	5973
2	6186
3	6265
4	
5	
6	
7	
8	
9	
10	
11	
12	
13	
14	
15	
16	
17	
18	
19	
20	

NOTE:

- ALL PARTS AVAILABLE TO ORDER AS AN INDIVIDUAL SPARE PART UNLESS MARKED ✗.



IMPORTANT

WHEN ORDERING SPARES YOU MUST STATE THE FULL PART NUMBER AND THE PRODUCT SERIAL NUMBER - FROM THE LABEL TO PROTECT YOUR WARRANTY ALWAYS USE GENUINE HI-FORCE PARTS.