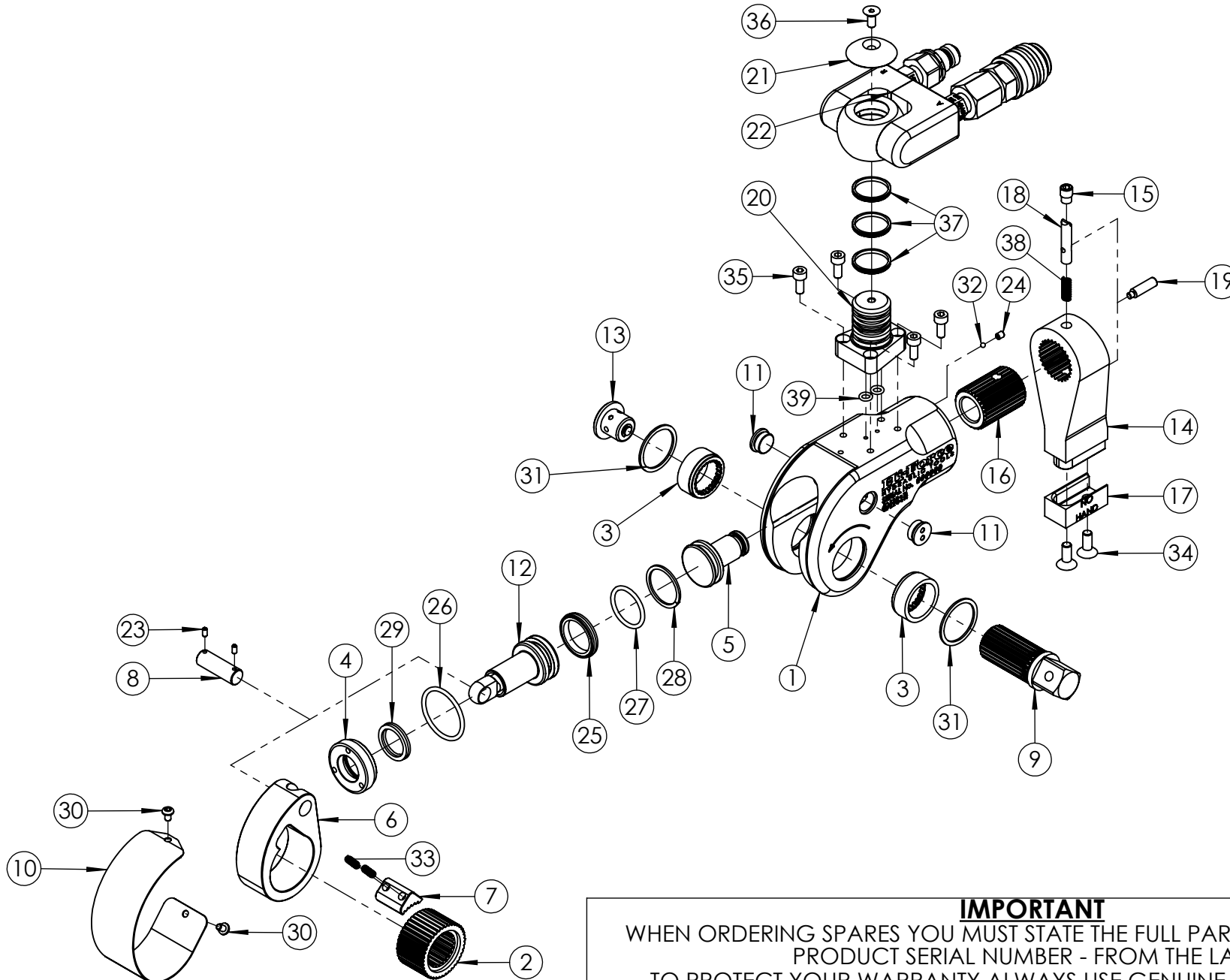


REVISION

1	
2	3891
3	3929
4	6265
5	6545
6	
7	
8	
9	
10	
11	
12	
13	
14	
15	
16	
17	
18	
19	
20	



IMPORTANT
WHEN ORDERING SPARES YOU MUST STATE THE FULL PART NUMBER AND THE PRODUCT SERIAL NUMBER - FROM THE LABEL TO PROTECT YOUR WARRANTY ALWAYS USE GENUINE HI-FORCE PARTS.

TWS-N HYDRAULIC TORQUE WRENCHES - SQUARE DRIVE

SERIAL NUMBERS

FROM EC0201

PRODUCT NO.

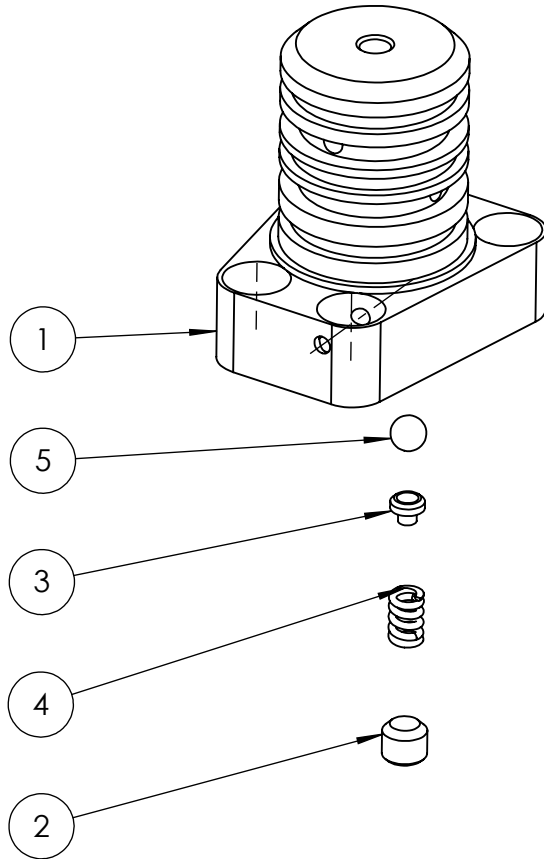
TWS17N

SHT 2 OF
2 SHTS

ITEM NO.	PART NUMBER	DESCRIPTION	QTY.	SPARE PARTS	SERVICE PARTS	ITEM NO.	PART NUMBER	DESCRIPTION	QTY.	SPARE PARTS	SERVICE PARTS	REVISION
1	TTC017BA002	BODY	1	X		27	SEC025RE001	O-RING - I.D. 25.07 mm, C.S. 2.62 mm, NITRILE 70	1	X	✓	1
2	TTC017WS001	RATCHET WHEEL	1			28	SEC025BE001	BACK UP RING - O.D. 30.15 mm, I.D. 25.4 mm, H 1.37 mm	1	X	✓	2 3891
3	TTC017FB001	BEARING	2			29	SEC019LE001	ROD LIP SEAL - O.D. 25.55 mm, I.D. 18.94 mm, 3.5 mm, POLYURETHANE	1	X	✓	3 3929
4	TTC017GB001	GLAND	1			30	BLC004JH006	M4 x 6 SOCKET BUTTON HEAD SCREW	2			4 6265
5	TTC017ES001	END PLUG	1			31	STC033TA001	RETAINING RING	2	X	✓	5 6545
6	TTC017CS002	DRIVE PLATE	1			32	BAC003SN000	3mm BALL (STEEL)	1			6
7	TTC017PS001	DRIVE SEGMENT	1			33	SPC005CA001	SPRING	2			7
8	TTC017JS001	DRIVE PIN	1			34	BLC006JE016	M6 x 16 mm HEX SOCKET COUNTERSUNK SCREW	2			8
9	TTC017DS001	SQUARE DRIVE	1			35	BLC005HD012	M5 x 12 HEX SOCKET CAP HEAD SCREW	4			9
10	TTC017LS002	SHROUD	1			36	BLC005HF012	M5 x 12 HEX SOCKET COUNTERSUNK SCREW	1			10
11	TTC017AA001	COVER PLUG	2			37	SEC025MF001	ROTARY SEAL - O.D. 25.01 mm, I.D. 21.87 mm, H. 2.4 mm HPU-R95	3	X	✓	11
12	TTA017NS001	PISTON ASSEMBLY	1			38	SPC006CA005	SPRING	1			12
13	TTA017LA001	RELEASE BUTTON ASSEMBLY	1			39	SEC009RA003	O-RING - I.D. 5.28 mm, C.S. 1.78 mm NITRILE 70	2	X	✓	13
14	TTC017QA002	REACTION ARM	1			<p>NOTE:</p> <p>- ALL PARTS ARE AVAILABLE TO BE ORDERED AS INDIVIDUAL SPARE PARTS (UNLESS MARKED WITH X).</p> <p>- ALL PARTS MARKED WITH ✓ ARE ONLY AVAILABLE SERVICEABLE PARTS FOUND IN: SERVICE KIT TWS17NTP4-K</p> <p>- FOR SUB ASSEMBLIES (ITEM NO'S 20 & 22) REFER TO THEIR INDIVIDUAL EVD's.</p>						14
15	TTC017AS001	PLUG	1									15
16	TTC017KS001	SPLINE SLEEVE	1									16
17	TTC017ES002	END CAP	1									17
18	TTC017JS002	LATCH PIN	1									18
19	TTC017JS003	RELEASE	1									19
20	TTA000SA002	SWIVEL BASE ASSEMBLY	1									20
21	TTC000SA010	SWIVEL CAP	1									21
22	TTA000SA001	SWIVEL CONNECTOR ASSEMBLY	1									22
23	FAS003ME006	M3 x 6 SOCKET CUP POINT SCREW	2									23
24	FAS004ME005	M4 x 5 SOCKET CUP POINT SCREW	1			24						
25	SEC030GA001	PISTON T SEAL - O.D. 30.18 mm, I.D. 23.83 mm, H 4.70 mm NBR/NYLON 70 SHORE	1	X	✓	25						
26	SEC038RA003	O-RING - I.D. 33 mm, C.S. 2.62 mm, NITRILE 70	1	X	✓	26						

IMPORTANT
WHEN ORDERING SPARES YOU MUST STATE THE FULL PART NUMBER AND THE PRODUCT SERIAL NUMBER - FROM THE LABEL TO PROTECT YOUR WARRANTY ALWAYS USE GENUINE HI-FORCE PARTS.

ITEM NO.	PART NUMBER	DESCRIPTION	QTY.	SPARE PARTS	REVISION
1	TTC000SA006	SWIVEL BASE	1	X	1 6484
2	FAS006MA005	M6 X 5 MM FLAT POINT GRUB SCREWS (DIN 913 / ISO 4026) – STAINLESS STEEL (A4) + 180 NYLON PATCH.	1	X	2
3	VRA280GB001	SPRING SEAT	1	X	3
4	SPC005CA008	COMPRESSION SPRING	1	X	4
5	BAC005SN001	3/16" BALL CHROME STEEL	1	X	5
					6
					7
					8
					9
					10
					11
					12
					13
					14
					15
					16
					17
					18
					19
					20



NOTE:

- ALL PARTS AVAILABLE TO ORDER AS AN INDIVIDUAL SPARE PART UNLESS MARKED X.

IMPORTANT

WHEN ORDERING SPARES YOU MUST STATE THE FULL PART NUMBER AND THE PRODUCT SERIAL NUMBER - FROM THE LABEL TO PROTECT YOUR WARRANTY ALWAYS USE GENUINE HI-FORCE PARTS.

NOTE:

- ALL PARTS AVAILABLE TO ORDER AS AN INDIVIDUAL SPARE PART UNLESS MARKED X.

- PARTS MARKED WITH A ✓ ARE **ONLY** AVAILABLE AS PART OF SERVICE KITS;

TWS17NTP4-K

TWS45NTP4-K

TWS100NTP4-K

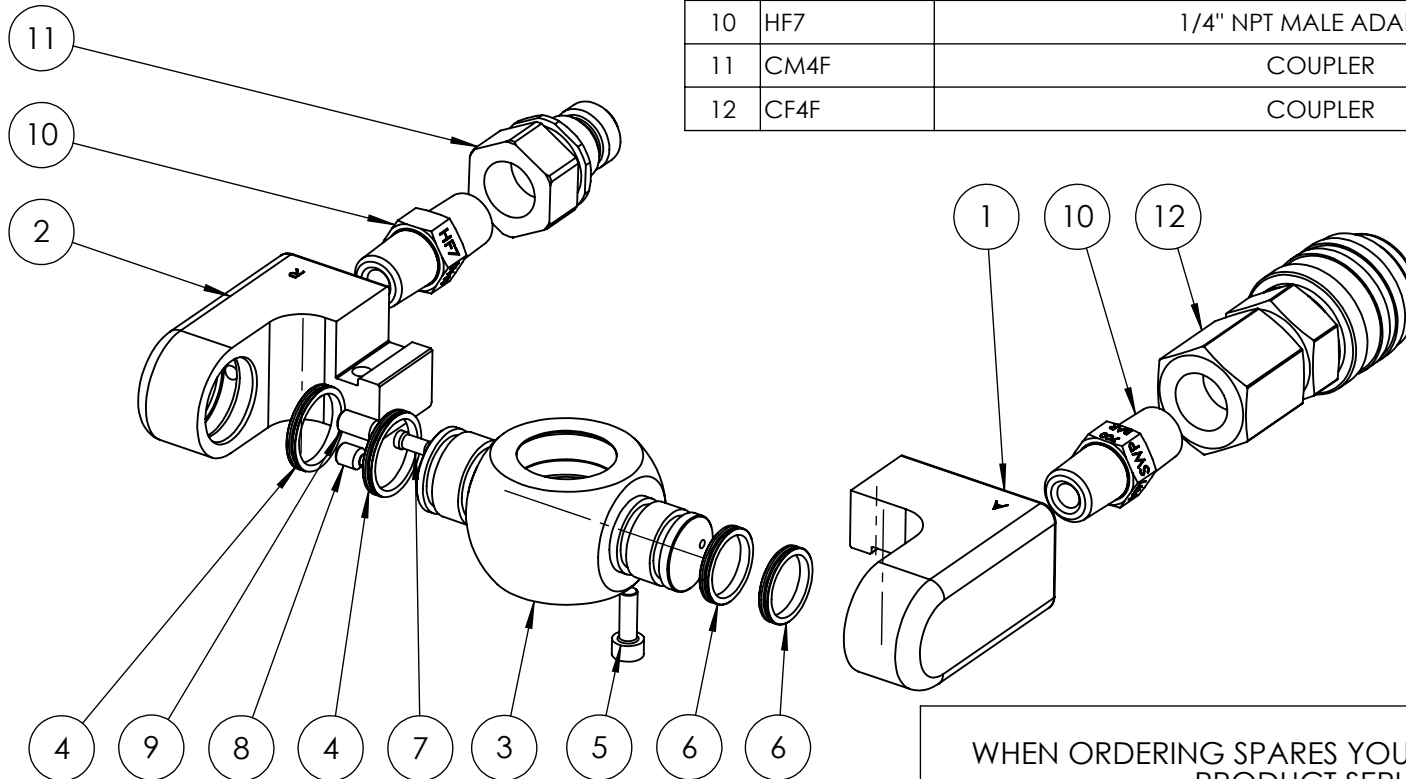
TWS150NTP4-K

TWS370NTP4-K

TWH430NTP4-K.

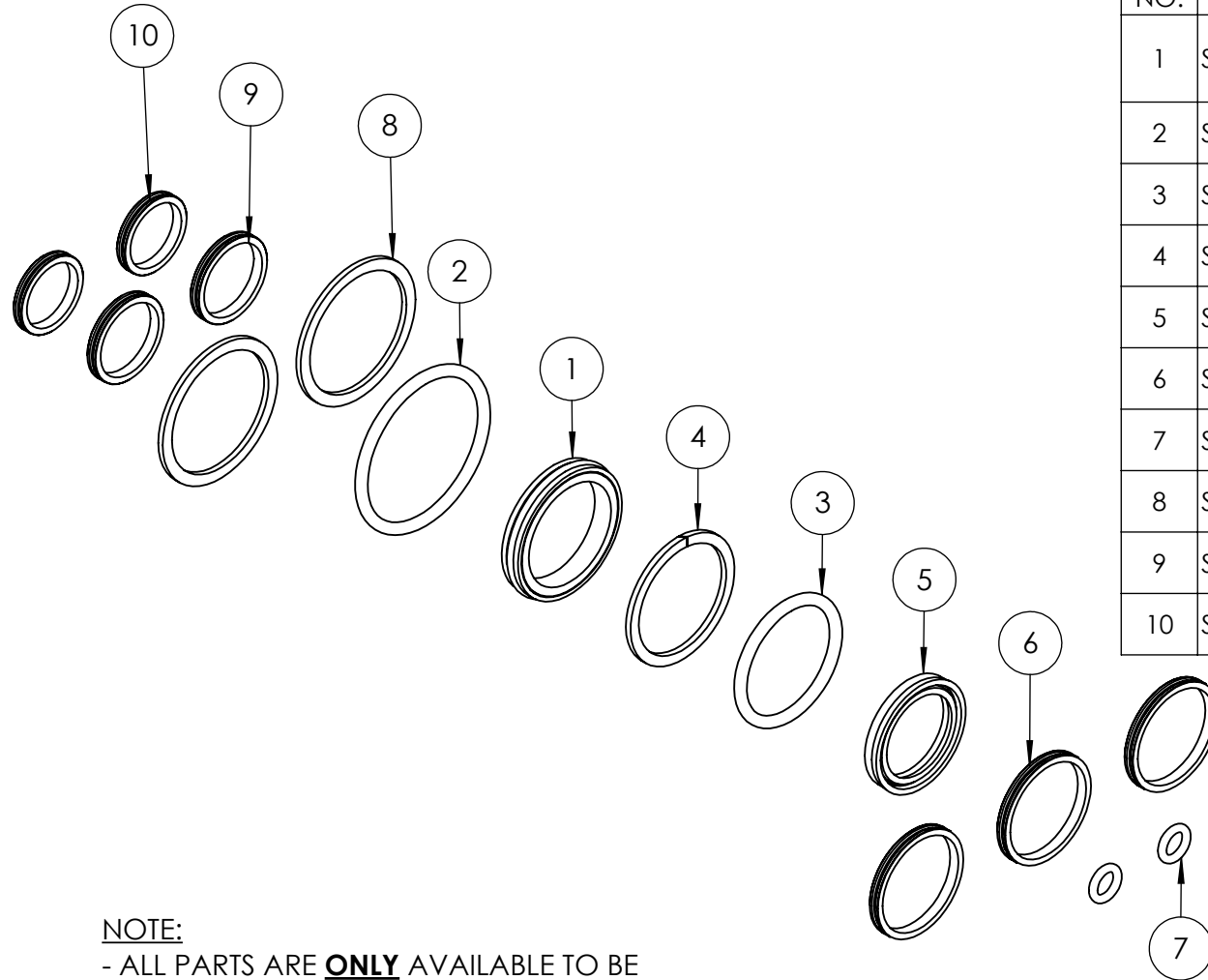
(REFER TO INDIVIDUAL TORQUE TOOL SERVICE KIT EVD'S FOR FULL PARTS LIST)

ITEM NO.	PART NUMBER	DESCRIPTION	QTY.	SPARE PARTS	SERVICE PARTS
1	TTC000SA007	ADVANCE FLAPPER	1	X	
2	TTC000SA008	RETRACT FLAPPER	1	X	
3	TTC000SA009	TRUNNION	1	X	
4	SEC020MF001	ROTARY SEAL - O.D. 20.15 mm , I.D. 17.03 mm , H. 2.4 mm HPU-R95	2	X	✓
5	BLC004JD012	SOCKET CAP HD SCREW M4 x 12	1	X	
6	SEC018MF001	ROTARY SEAL - O.D. 18.02 mm , I.D. 15.03 mm , H. 2.4 mm HPU-R95	2	X	✓
7	BPC003TS001	PLUG	1	X	
8	FAS005ME006	SOCKET CUP PT SCREW M5 x 6	1	X	
9	FAS005ME010	SOCKET CUP PT SCREW M5 x 10	1	X	
10	HF7	1/4" NPT MALE ADAPTOR	2	X	
11	CM4F	COUPLER	1		
12	CF4F	COUPLER	1		



IMPORTANT

WHEN ORDERING SPARES YOU MUST STATE THE FULL PART NUMBER AND THE PRODUCT SERIAL NUMBER - FROM THE LABEL TO PROTECT YOUR WARRANTY ALWAYS USE GENUINE HI-FORCE PARTS.



ITEM NO.	PART NUMBER	DESCRIPTION	QTY.	REVISION
1	SEC030GA001	PISTON T SEAL - O.D. 30.18 mm, I.D. 23.83 mm, H 4.70 mm NBR/NYLON 70 SHORE	1	1 6545
2	SEC038RA003	O-RING - I.D. 33 mm, C.S. 2.62 mm, NITRILE 70	1	2
3	SEC025RE001	O-RING - I.D. 25.07 mm, C.S. 2.62 mm, NITRILE 70	1	3
4	SEC025BE001	BACK UP RING - O.D. 30.15 mm, I.D. 25.4 mm, H 1.37 mm	1	4
5	SEC019LE001	ROD LIP SEAL - O.D. 25.55 mm, I.D. 18.94 mm, 3.5 mm, POLYURETHANE	1	5
6	SEC025MF001	ROTARY SEAL - O.D. 25.01 mm, I.D. 21.87 mm, H. 2.4 mm HPU-R95	3	6
7	SEC009RA003	O-RING - I.D. 5.28 mm, C.S. 1.78 mm NITRILE 70	2	7
8	STC033TA001	RETAINING RING	2	8
9	SEC020MF001	ROTARY SEAL - O.D. 20.15 mm, I.D. 17.03 mm, H. 2.4 mm HPU-R95	2	9
10	SEC018MF001	ROTARY SEAL - O.D. 18.02 mm, I.D. 15.03 mm, H. 2.4 mm HPU-R95	2	10

11
12
13
14
15
16
17
18
19
20

NOTE:

- ALL PARTS ARE **ONLY** AVAILABLE TO BE ORDERED AS PART OF THE SERVICE KIT.

IMPORTANT

WHEN ORDERING SPARES YOU MUST STATE THE FULL PART NUMBER AND THE PRODUCT SERIAL NUMBER - FROM THE LABEL TO PROTECT YOUR WARRANTY ALWAYS USE GENUINE HI-FORCE PARTS.