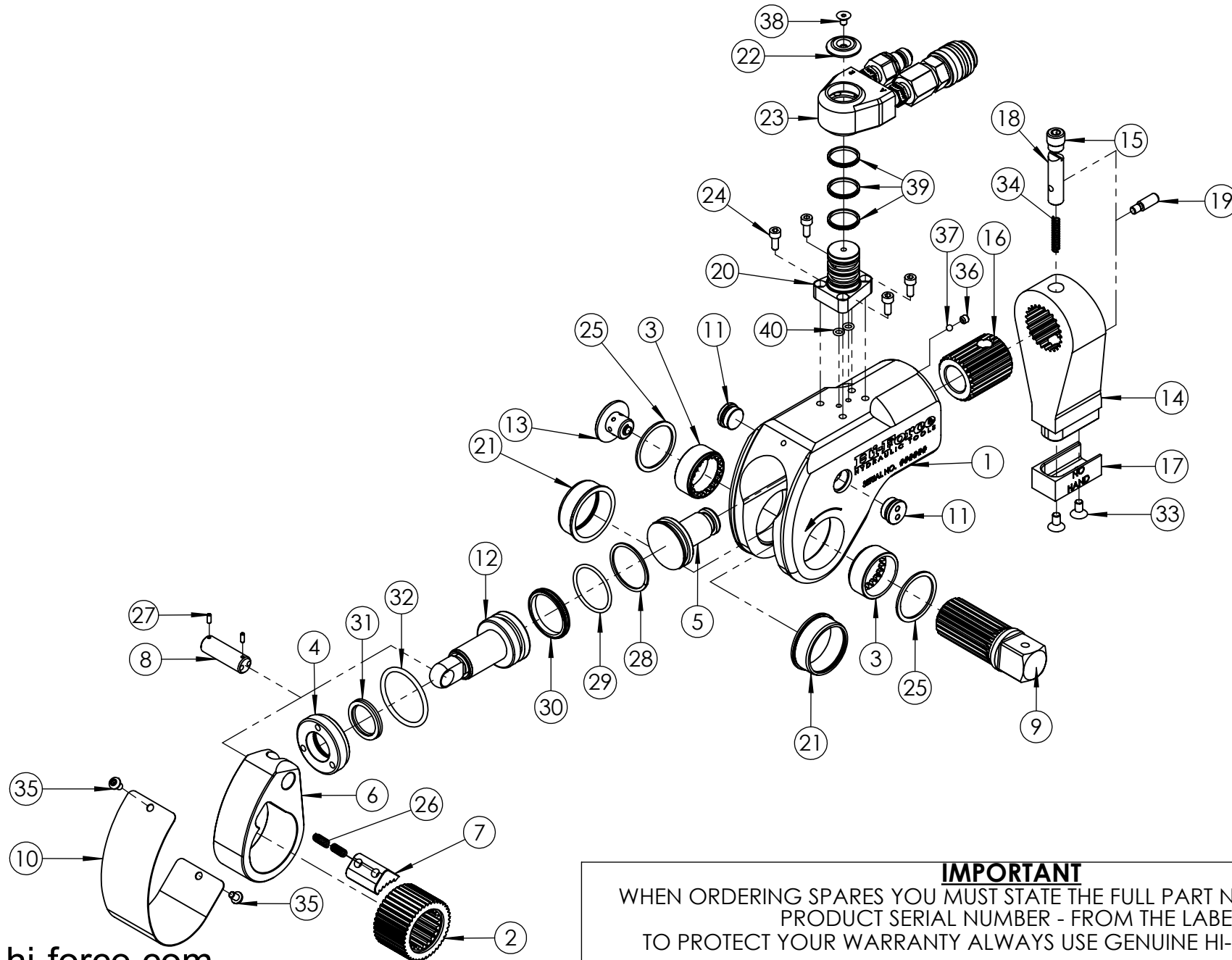


1	
2	
3	
4	3891
5	4251
6	4691
7	6265
8	
9	
10	
11	
12	
13	
14	
15	
16	
17	
18	
19	
20	



**IMPORTANT**

WHEN ORDERING SPARES YOU MUST STATE THE FULL PART NUMBER AND THE PRODUCT SERIAL NUMBER - FROM THE LABEL TO PROTECT YOUR WARRANTY ALWAYS USE GENUINE HI-FORCE PARTS.

## TWS TORQUE TOOL

SERIAL NUMBERS

FROM BB8847

PRODUCT NO.

TWS45N

 SHT 2 OF  
2 SHTS

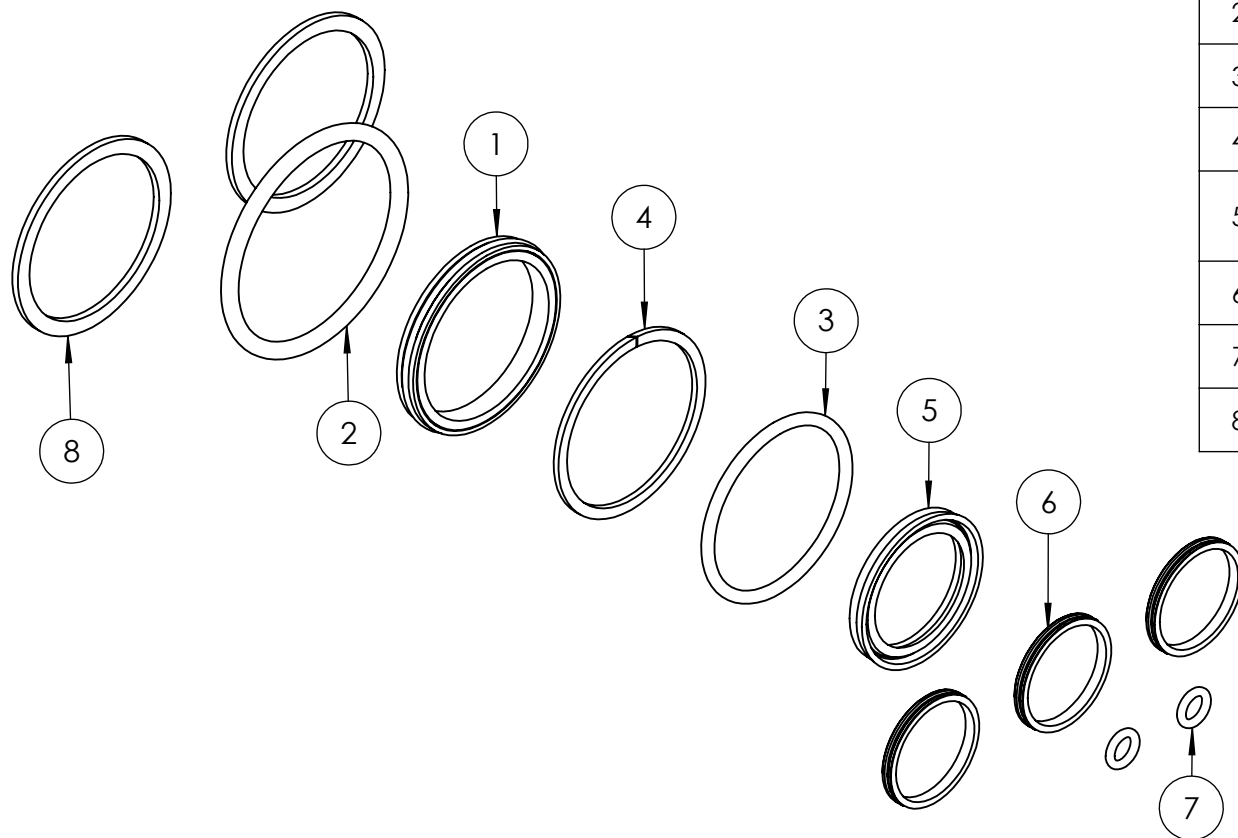
ITEM NO.	PART NUMBER	DESCRIPTION	QTY.	SPARE PARTS	SERVICE PARTS	ITEM NO.	PART NUMBER	DESCRIPTION	QTY.	SPARE PARTS	SERVICE PARTS	REVISION
1	TTC045BA002	BODY	1	<b>x</b>		31	SEC025LE001	ROD LIP SEAL - O.D. 33 mm, I.D. 25.00 mm, H 3.75 mm, POLYURETHANE	1		✓	1
2	TTC045WS001	RATCHET WHEEL	1			32	SEC044RE001	O-RING - I.D. 44.04 mm, C.S. 3.53 mm, NITRILE 90 SHORE	1		✓	2
3	TTC045FB001	BEARING	2			33	BLC006JE012	M6 x 12 HEX SOCKET COUNTERSUNK SCREW	2			3
4	TTC045GB001	GLAND	1			34	SPC006CB003	SPRING	1			4 3891
5	TTC045ES001	END PLUG	1			35	BLC005HH008	M5 x 8 BUTTON HEAD SCREW	2			5 4251
6	TTC045CS002	DRIVE PLATE	1			36	FAS006MB005	SOCKET CUP POINT SCREW M6 x 5	1			6 4691
7	TTC045PS001	DRIVE SEGMENT	1			37	BAC005SN001	3/16" BALL	1			<b>7</b> 6265
8	TTC045JS001	DRIVE PIN	1			38	BLC005HF008	SOCKET CSK SCREW M5 x 8	1			8
9	TTC045DS001	SQUARE DRIVE	1			39	SEC025MF001	ROTARY SEAL - O.D. 25.01 mm, I.D. 21.87 mm, H. 2.4 mm HPU-R95	3		✓	9
10	TTC045LS002	SHROUD	1			40	SEC009RA003	O-RING - I.D. 5.28 mm, C.S. 1.78 mm NITRILE 70	2		✓	10
11	TTC045AA001	COVER PLUG	2									11
12	TTA045NS001	PISTON ASSEMBLY	1									12
13	TTA045LA001	RELEASE BUTTON ASSEMBLY	1									13
14	TTC045QA002	REACTION ARM	1									14
15	TTC045AS001	PLUG	1									15
16	TTC045KS001	SPLINE SLEEVE	1									16
17	TTC045ES002	END CAP	1									17
18	TTC045JS002	LATCH PIN	1									18
19	TTC045JS003	RELEASE	1									19
20	TTC045SA001	MALE SWIVEL CONNECTOR	1									20
21	TTC045FS002	SLEEVE	2									
22	TTC045SA003	SWIVEL CONNECTOR CAP	1									
23	<b>TTA045SA002</b>	SWIVEL CONNECTOR ASSEMBLY	1									
24	BLC005HD012	M5 x 12 HEX SOCKET CAP HEAD SCREW	4									
25	STC040TA001	RETAINING RING	2		✓							
26	SPC006CB004	SPRING	2									
27	FAS003ME008	M3 X 8 SOCKET CUP POINT SCREW	2									
28	SEC041BA001	BACK UP RING - O.D. 41.28 mm, I.D. 36.50 mm, H 1.37 mm PTFE	1		✓							
29	SEC041RA001	O-RING - I.D. 36.17 mm, C.S. 2.62 mm 90 SHORE	1		✓							
30	SEC041GA001	PISTON T SEAL - O.D. 41.28 mm, I.D. 34.93 mm, H 4.70 mm, NBR/NYLON 70 SHORE	1		✓							

**NOTE:**

- ALL PARTS ARE AVAILABLE TO BE ORDERED AS SPARE PARTS (UNLESS MARKED WITH **x**).
- ONLY PARTS MARKED WITH **✓** ARE AVAILABLE AS BOTH SPARE PARTS OR SERVICEABLE PARTS, FROM **TWS45NTP3-K SERVICE KIT**. (REFER TO TWS45NTP3-K: SERVICE KIT EVD FOR FULL PARTS LIST).
- FOR SUB ASSEMBLIES (ITEM NO 23) REFER TO THEIR INDIVIDUAL EVD's.

**IMPORTANT**

WHEN ORDERING SPARES YOU MUST STATE THE FULL PART NUMBER AND THE PRODUCT SERIAL NUMBER - FROM THE LABEL TO PROTECT YOUR WARRANTY ALWAYS USE GENUINE HI-FORCE PARTS.



ITEM NO.	PART NUMBER	DESCRIPTION	QTY.	REVISION
1	SEC041GA001	PISTON T SEAL - O.D. 41.28 mm, I.D. 34.93 mm, H 4.70 mm, NBR/NYLON 70 SHORE	1	1 6265
2	SEC044RE001	O-RING - I.D. 44.04 mm, C.S. 3.53 mm, NITRILE 90 SHORE	1	2
3	SEC041RA001	O-RING - I.D. 36.17 mm, C.S. 2.62 mm 90 SHORE	1	3
4	SEC041BA001	BACK UP RING - O.D. 41.28 mm, I.D. 36.50 mm, H 1.37 mm PTFE	1	4
5	SEC025LE001	ROD LIP SEAL - O.D. 33 mm, I.D. 25.00 mm, H 3.75 mm, POLYURETHANE	1	5
6	SEC025MF001	ROTARY SEAL - O.D. 25.01 mm, I.D. 21.87 mm, H. 2.4 mm HPU-R95	3	6
7	SEC009RA003	O-RING - I.D. 5.28 mm, C.S. 1.78 mm NITRILE 70	2	7
8	STC040TA001	RETAINING RING	2	8

16  
17  
18  
19  
20

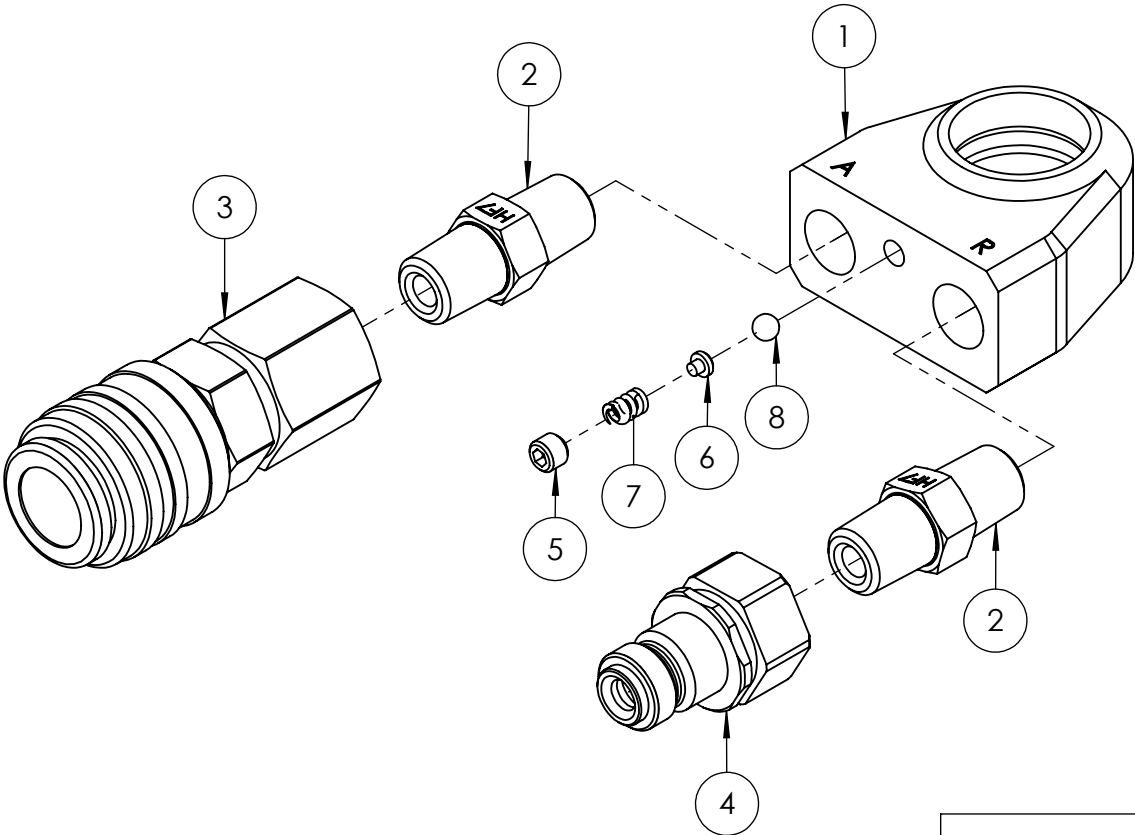
**IMPORTANT**

WHEN ORDERING SPARES YOU MUST STATE THE FULL PART NUMBER AND THE PRODUCT SERIAL NUMBER - FROM THE LABEL TO PROTECT YOUR WARRANTY ALWAYS USE GENUINE HI-FORCE PARTS.

ITEM NO.	PART NUMBER	DESCRIPTION	QTY.	SPARE PARTS	REVISION	
1	TTC045SA002	FEMALE SWIVEL CONNECTOR	1	✗	1	5973
					2	6186
2	HF7	1/4" NPT MALE ADAPTOR	2	✗	3	6265
3	CF4F	COUPLER	1		4	
4	CM4F	COUPLER	1		5	
5	FAS006MA005	SKT FLAT POINT SCREW M6 x 5 (LOCKING)	1	✗	6	
6	VRA280GB001	SPRING SEAT	1	✗	7	
7	SPC005CA008	COMPRESSION SPRING	1	✗	8	
8	BAC005SN001	3/16" BALL CHROME STEEL	1	✗	9	
					10	
					11	
					12	
					13	
					14	
					15	
					16	
					17	
					18	
					19	
					20	

**NOTE:**

- ALL PARTS AVAILABLE TO ORDER AS AN INDIVIDUAL SPARE PART UNLESS MARKED ✗.



**IMPORTANT**

WHEN ORDERING SPARES YOU MUST STATE THE FULL PART NUMBER AND THE PRODUCT SERIAL NUMBER - FROM THE LABEL TO PROTECT YOUR WARRANTY ALWAYS USE GENUINE HI-FORCE PARTS.