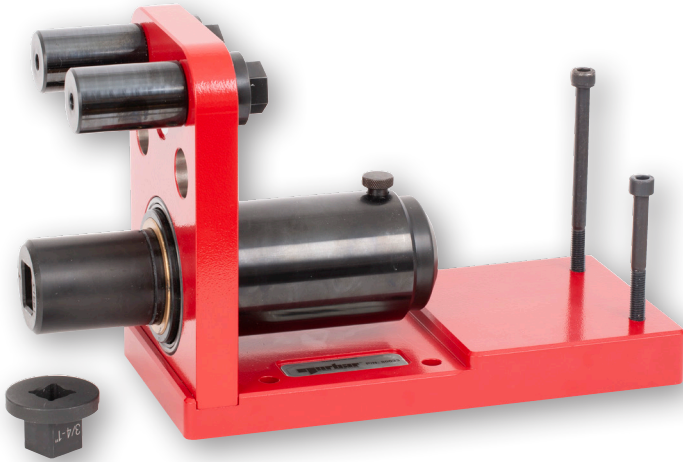




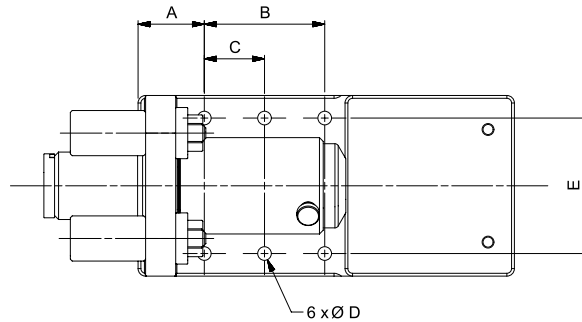
TEST RIGS AND FIXTURES



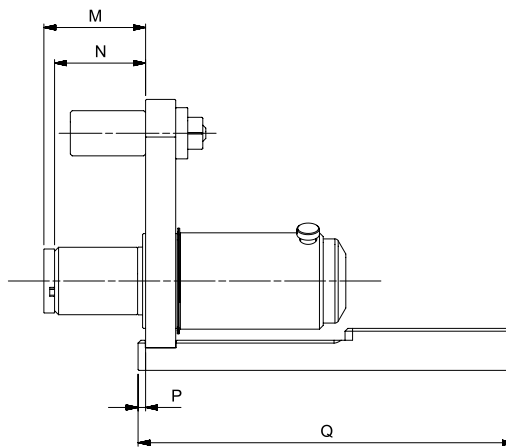
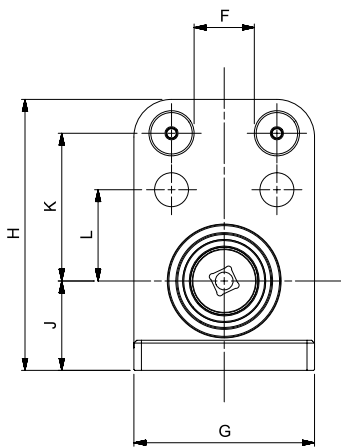
The Power Tool Test Fixture for TruCheck™ 2 is a simple, robust device that allows non-impacting power tools up to 2,100 N·m to be tested. A system comprises the Test Fixture with a TruCheck™ 2 Plus (to be ordered separately), either the 1,100 N·m or 2,100 N·m models, depending on the torque capacity required. The universal torque reaction arrangement will suit reaction arms supplied as standard with most Norbar and other pneumatic, electric and cordless torque tools.

NOTE: This Test Fixture is not suitable for TruCheck™ version 1.

4	POWER TOOL TEST FIXTURE FOR TRUCHECK 2
80033	Power Tool Test Fixture for use with TruCheck 2
4	80033 SPARE PARTS
81043	Spacer Sleeve
81044	Bellville Washer Stack (pack of 8 washers)
81045	Replacement Rundown Screw & Nut



Model	Power Tool Test Fixture for TruCheck 2
Part Number	80033
A	56
B	102
C	51
ØD	11.5
E	114
F	51
G	152
H	229
J	75
K	125
L	77
M	86
N	76
P	6
Q	318
Weight (kg)	24.5



The Norbar Joint Simulation Rundown Assemblies are designed to simulate the working conditions of screwed or bolted joints. Used in conjunction with a Norbar transducer and display instrument, the output of torque controlled power tools can be measured against a range of simulated joint rates, from hard through to soft.

4	JOINT SIMULATION RUNDOWN ASSEMBLIES
50313	0.2 - 2 N·m (2 - 20 lbf·in)
50251	2 - 10 N·m (20 - 100 lbf·ft)
50252	5 - 50 N·m (5 - 50 lbf·ft)
50253	10 - 100 N·m (10 - 100 lbf·ft)
50254*	100 - 500 N·m (100 - 500 lbf·ft)

The above are for use with Norbar static square to square transducers and bench stands, see page 98 & page 99.

* To be used with large frame size bench stands, all others to be used with small frame bench stands.

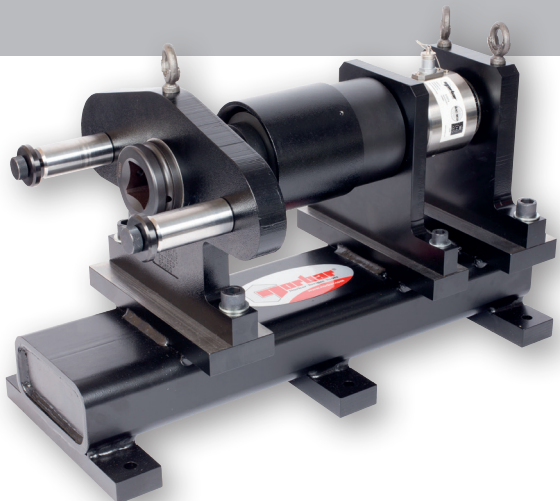
NOTE: Spare washer stacks are available for use with Joint Simulation Rundown Assemblies, contact Norbar

50693	10 - 140 N·m (10 - 100 lbf·ft)
50694	100 - 700 N·m (70 - 500 lbf·ft)

The above are for use with the Norbar Smart Torque Block (STB) 1000.



TEST RIGS AND FIXTURES



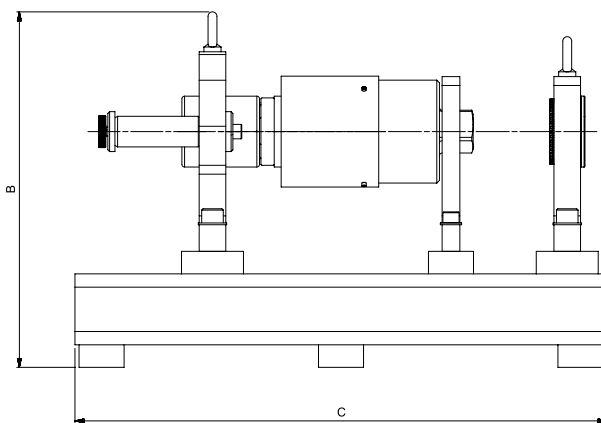
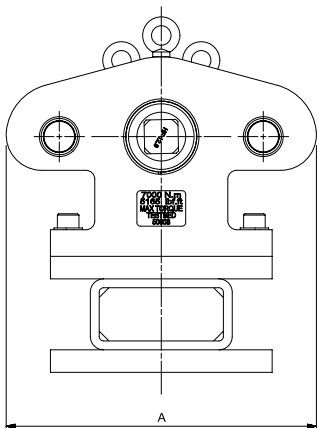
Power Tool Test Rig shown with 1½" M/F Static Transducer (not included)

4	ET/EBT/PT POWER TOOL TEST RIG
50800	7,000 N-m ET, EBT, PT Power Tool Test Rig (supplied with the 8 reaction plates on page 115 (excluding blank reaction plate) and ¾", 1" and 1½" sq. dr. adaptors)
50803	7,000 N-m ET, EBT, PT Power Tool Test Rig without Reaction Plates (supplied with ¾", 1" and 1½" sq. dr. adaptors)

Note: The static transducer 50669.LOG does not come supplied as standard with the tool test rig. The standard range of 700 - 7,000 N-m will not cover the full powered multiplier range, additional calibration may be required, please see below:

ADDCALPOINTS.NEW

Additional calibration steps below 10% of rated capacity to 2% for transducers up to 7,000 N-m (5,000 lbf-ft) when ordered with new unit

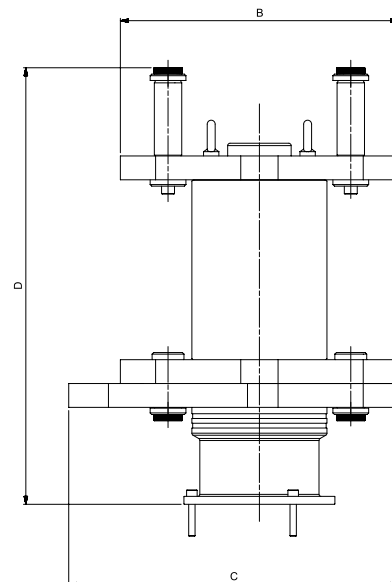
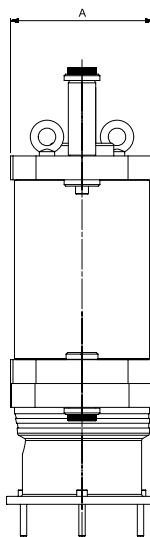


Model	Power Tool Test Rig	
Part Number	50800 50803	
Dimensions (mm)	A	350
	B	401
	C	600
Weight (kg)	TBC	



Universal Tool Test Rig (1½" M/F Static Transducer required (not included))

Model	Universal Tool Test Rig	
Part Number	50801, 50804	
Dimensions (mm)	A	180
	B	350
	C	415
	D	550
Weight (kg)	73.0	



4	7,000 N-m UNIVERSAL TOOL TEST RIGS
50801	Universal 7,000 N-m ET, EBT, PT & Hydraulic Tool Test Rig (supplied with the 8 reaction plates on page 115 (excluding blank reaction plate) and ¾", 1" and 1½" sq. dr. adaptors)
50804	Universal 7,000 N-m Test Rig without Reaction Plates (supplied with ¾", 1" and 1½" sq. dr. adaptors)



TEST RIGS AND FIXTURES



Power Tool Test Rig with Reaction Plates (50800)



Universal Hydraulic Tool Test Rig with Reaction Plates (50801)



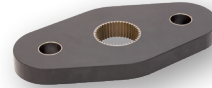
4 SPARES FOR 50800, 50801, 50803 & 50804

50800.29	2" AF Socket 1½" sq. dr.
50800.28	2" AF Socket 1" sq. dr.
50800.27	2" AF Socket ¾" sq. dr.

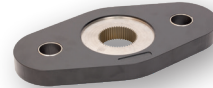


81041	Nut and bolt set for 7,000 N·m Power Tool Test Rigs
50548.4	Washer Stack Kit 100 - 7,000 N·m (Also for use with RD5000)

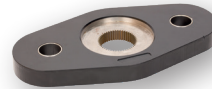
4 REACTION PLATES FOR USE WITH 50803 & 50804



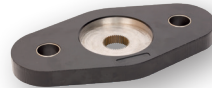
81024	Suitable for ET/EBT/PTS/PTM 119, PT 4500 and PT 5500
-------	--



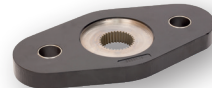
81025	Suitable for ET/EBT/PTS/PTM 92
-------	--------------------------------



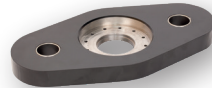
81026	Suitable for ET/EBT/PTS/PTM 72
-------	--------------------------------



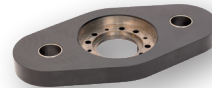
81027	Suitable for PTS/PTM 52
-------	-------------------------



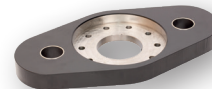
81028	Suitable for PT 2700
-------	----------------------



81029	Suitable for PT 1, PT 1A and PT 2
-------	-----------------------------------



81030	Suitable for PT 5 and PT 6
-------	----------------------------



81031	Suitable for PT 7
-------	-------------------



81032	Blank Reaction Plate for Universal Test Rigs
-------	--

NOTE: Reaction plate dimensions can be found by searching their part number on the Norbar website.

See page 117 & page 119 for accessories for use with Hydraulic Tool Calibration Fixture.