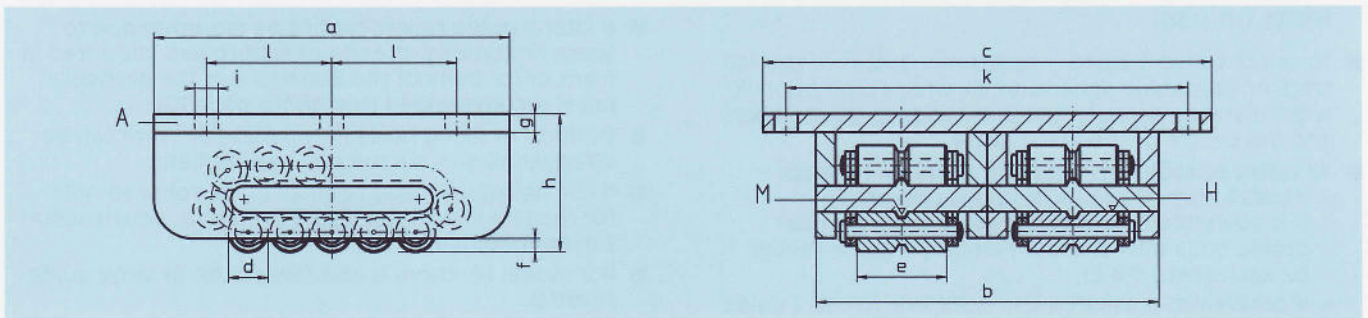
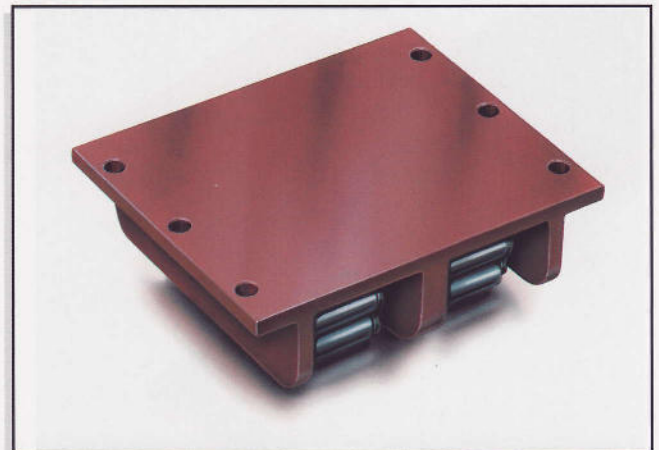


# Roller Skate Express – The Super-Robusts

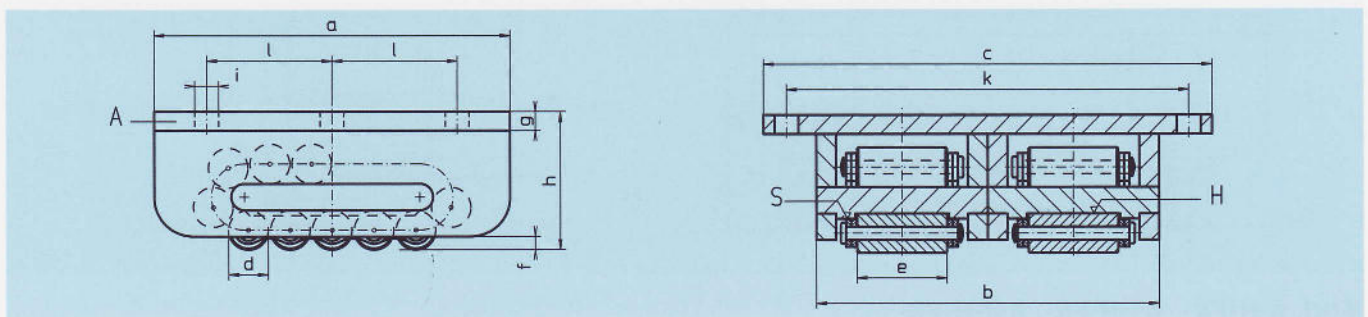
## Range of application:

- For longer distances and repeat journeys with permanent loads.
- On suitable tracks like crane rails or steel beams.
- For extreme load bearing points.
- Suitable for limited space.
- Often used for bridge construction or for mobile equipment to support hydraulic valves.
- Use as a conveyor, when the load is moving and the Roller Skates are fixed.
- Triple Roller Skates or Multiple Roller Skates on request.
- For further information please see pages 8-10.



**Mod. ZAM-H** (H = hardened and machined centre plate), **ZAM-H-50CrV4** (roller material 50CrV4)

| Mod. | a   | b   | c   | Ø d | e   | f  | g  | h   | Ø i | k   | l   | Rollers under stress | Number of Rollers | Maximum load kN | Weight kg |
|------|-----|-----|-----|-----|-----|----|----|-----|-----|-----|-----|----------------------|-------------------|-----------------|-----------|
| I    | 210 | 200 | 280 | 18  | 51  | 6  | 13 | 76  | 14  | 245 | 75  | 2 x 5                | 2 x 15            | 250             | 16,0      |
| II   | 220 | 226 | 305 | 24  | 60  | 10 | 14 | 87  | 14  | 270 | 80  | 2 x 4                | 2 x 13            | 340             | 22,0      |
| III  | 270 | 260 | 340 | 30  | 68  | 10 | 14 | 104 | 18  | 305 | 95  | 2 x 4                | 2 x 13            | 660             | 35,0      |
| IIIv | 320 | 280 | 360 | 30  | 68  | 10 | 18 | 115 | 18  | 325 | 120 | 2 x 6                | 2 x 17            | 840             | 55,5      |
| IV   | 380 | 336 | 440 | 42  | 76  | 19 | 19 | 145 | 22  | 390 | 150 | 2 x 4                | 2 x 13            | 1060            | 92,5      |
| V    | 530 | 364 | 480 | 50  | 86  | 19 | 19 | 165 | 22  | 430 | 210 | 2 x 6                | 2 x 17            | 1380            | 168,0     |
| VL   | 580 | 364 | 480 | 50  | 86  | 19 | 23 | 170 | 26  | 430 | 250 | 2 x 8                | 2 x 21            | 1760            | 197,0     |
| Vv   | 650 | 410 | 560 | 50  | 100 | 20 | 28 | 190 | 26  | 490 | 240 | 2 x 9                | 2 x 23            | 2500            | 294,0     |
| VI   | 900 | 410 | 590 | 50  | 100 | 20 | 38 | 200 | 33  | 500 | 360 | 2 x 13               | 2 x 31            | 3300            | 432,0     |



**Mod. ZAS-H** (H = hardened and machined centre plate), **ZAS-H-50CrV4** (roller material 50CrV4)

| Mod. | a   | b   | c   | Ø d | e   | f  | g  | h   | Ø i | k   | l   | Rollers under stress | Number of Rollers | Maximum load kN | Weight kg |
|------|-----|-----|-----|-----|-----|----|----|-----|-----|-----|-----|----------------------|-------------------|-----------------|-----------|
| III  | 270 | 260 | 340 | 30  | 68  | 10 | 14 | 104 | 18  | 305 | 95  | 2 x 4                | 2 x 13            | 800             | 36,2      |
| IIIv | 320 | 280 | 360 | 30  | 68  | 10 | 18 | 115 | 18  | 325 | 120 | 2 x 6                | 2 x 17            | 1000            | 57,5      |
| IV   | 380 | 336 | 440 | 42  | 76  | 19 | 19 | 145 | 22  | 390 | 150 | 2 x 4                | 2 x 13            | 1300            | 96,0      |
| V    | 530 | 364 | 480 | 50  | 86  | 19 | 19 | 165 | 22  | 430 | 210 | 2 x 6                | 2 x 17            | 1700            | 175,0     |
| VL   | 580 | 364 | 480 | 50  | 86  | 19 | 23 | 170 | 26  | 430 | 250 | 2 x 8                | 2 x 21            | 2000            | 207,0     |
| Vv   | 650 | 410 | 560 | 50  | 100 | 20 | 28 | 190 | 26  | 490 | 240 | 2 x 9                | 2 x 23            | 3000            | 305,0     |
| VI   | 900 | 410 | 590 | 50  | 100 | 20 | 38 | 200 | 33  | 500 | 360 | 2 x 13               | 2 x 31            | 4000            | 485,0     |

All dimensions in mm